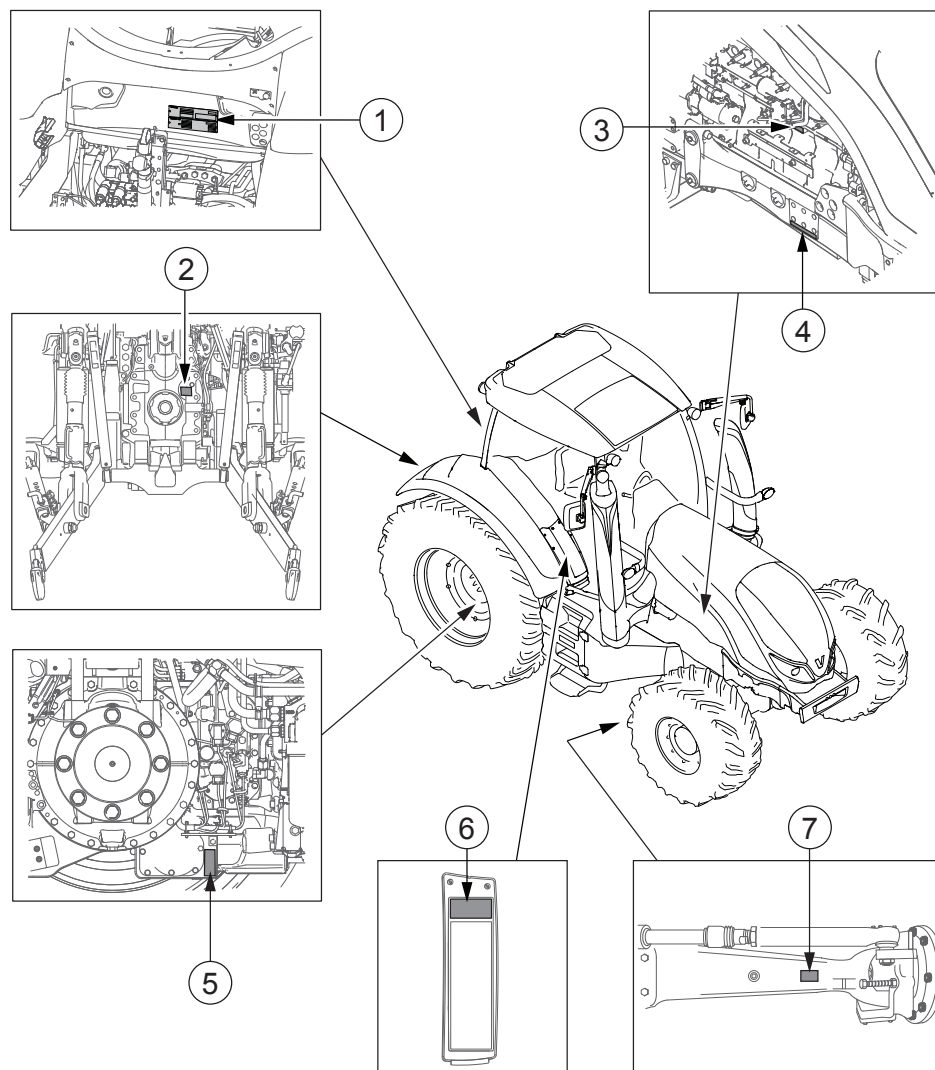


Tractor serial numbers

When ordering spare parts or service, give the model indication and serial numbers and, in some cases, the engine, front axle, cab and transmission numbers.



1. Cab number and Type plate EEC
 - Model = model indication
 - Identification number = tractor serial number
2. Power take-off identification number
3. Engine number
4. Tractor serial number
5. Transmission Identification number
6. Tractor technical details used by service/spare part department
7. Front axle number


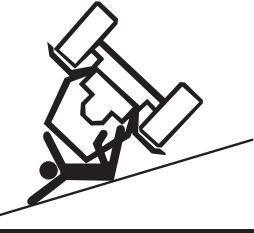

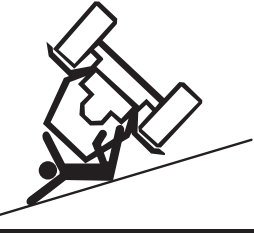
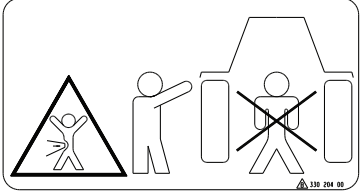









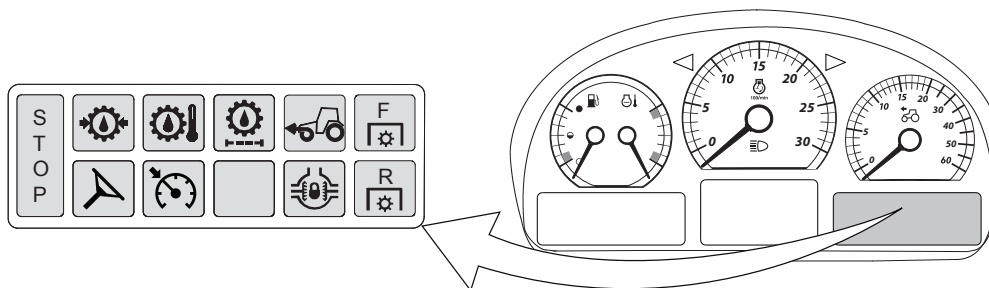
| | |
|-----------|--|
| <p>19</p> | <p>Warning: Country-specific sign notifying that the seat belt must be used when driving the tractor. Located behind the passenger seat.</p> <div data-bbox="511 226 795 924">  <p>WARNING</p> <p>USE SEAT BELT. Keep seat belt adjusted snugly.</p>  <p>Do not jump if tractor tips.</p> <p>36149800</p> </div> <div data-bbox="974 226 1258 924">  <p>ATENCIÓN</p> <p>USE EL CINTURÓN DE SEGURIDAD Mantenga su cinturón ajustado cómodamente</p>  <p>No salte si el tractor vuelca</p> <p>39661600</p> </div> |
| <p>20</p> | <p>Warning against standing directly behind the tractor when it is used. Located at the back of the tractor, on both rear mudguards.</p>  |
| <p>21</p> | <p>Country-specific signs located near the battery casing.</p> <p>Danger: Starting the tractor is only allowed when sitting in the seat with the transmission and PTO in neutral.</p> <p>Warning: Preparations for servicing the electrical system.</p> <div data-bbox="511 1312 933 1669">  <p>DANGER</p> <p>Start only from seat with transmission and PTO in neutral.</p> <p>Starting in gear kills.</p>  <p>WARNING</p> <p>Remove negative cables from batteries before removing solenoid cover and before servicing the electrical system.</p> <p>36150200</p> </div> <div data-bbox="974 1312 1396 1669">  <p>PELIGRO</p> <p>Arranque sólo desde el asiento con el cambio de velocidades y TDF en posición neutra.</p>  <p>ATENCIÓN</p> <p>Retire los cables de polo negativo de las baterías antes de retirar la cubierta del solenoide y antes de conectar el sistema eléctrico.</p> <p>39663700</p> </div> |

Table continued on next page

| Indicator light | Indication |
|---|---|
|  | Σ-indicator light (optional on models T144, T154, T174E). The light is lit continuously (yellow) when the tractor is operating in the higher power range and using PTO. |
|  | Glow indicator light. The light (yellow) is lit when the ignition key is in position II and the engine is cold. |
|  | Parking brake indicator light <ul style="list-style-type: none"> The light (red) is lit to indicate that the parking brake has engaged The light blinks when the parking brake is engaging or disengaging The light blinks and the buzzer sounds continuously when there is a fault in the parking brake |
|  | Low fuel level indicator light The light is lit (yellow) and a buzzer sounds once to indicate that the fuel level is low. The light blinks if there is water in the fuel. |
|  | Battery charging indicator light The light is lit and a buzzer sounds once when battery charging is not ongoing. IMPORTANT: A charging failure must be fixed immediately. When the voltage is reduced, the electric valves may reduce the oil pressure for the multi-disc clutches and cause clutch slippage which may damage the clutch discs. |

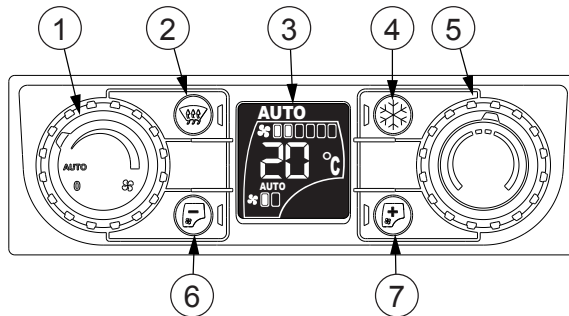
2.5.3 Indicator lights on the right side of the display



2.12 Air conditioning controls

2.12.1 Automatic air conditioning and additional heater controls

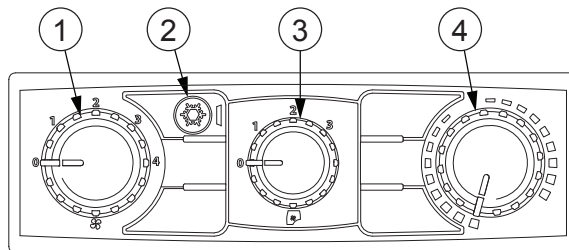
The automatic air conditioning and additional heater system is optional.



1. Fan speed control knob (selection OFF/Auto/Manual)
2. Defrost
3. Display
4. Air conditioning ON/OFF
5. Temperature control knob
6. Additional heater fan speed decrease (selection Manual/OFF/Auto)
7. Additional heater fan speed increase (selection ON/Manual)

2.12.2 Manual air conditioning and additional heater controls

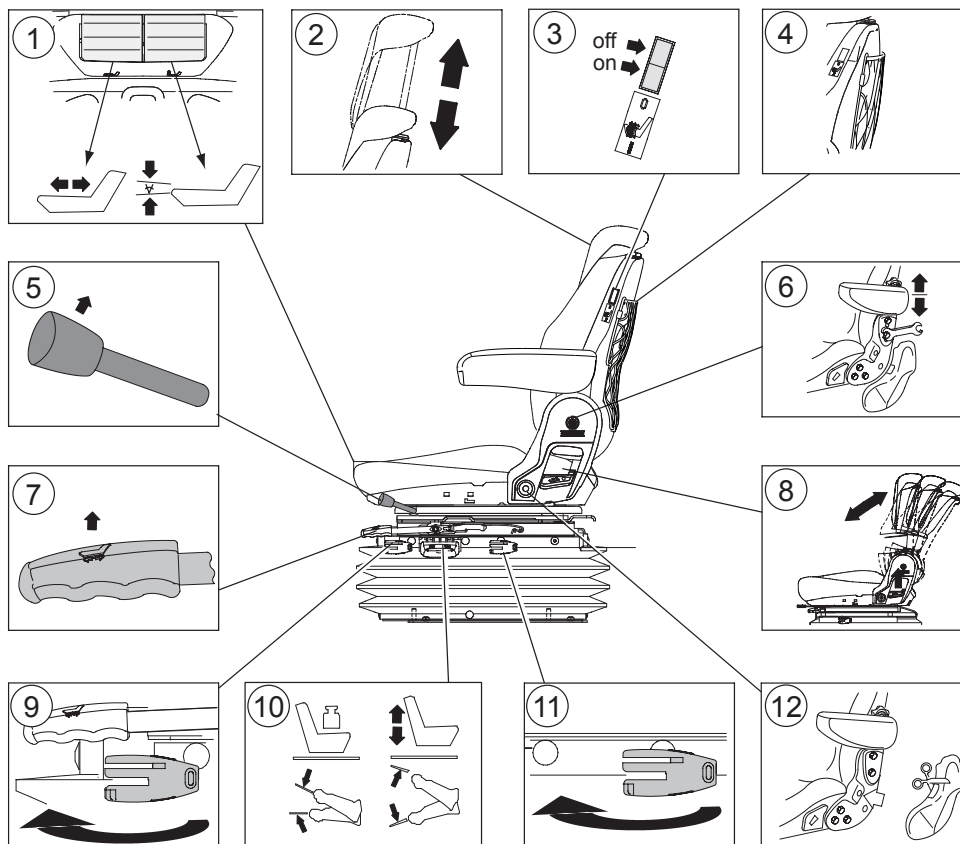
The manual air conditioning and additional heater system is optional.



1. OFF/Fan speed control knob
2. Air conditioning ON/OFF
3. Additional heater OFF/fan speed control knob
4. Temperature control knob

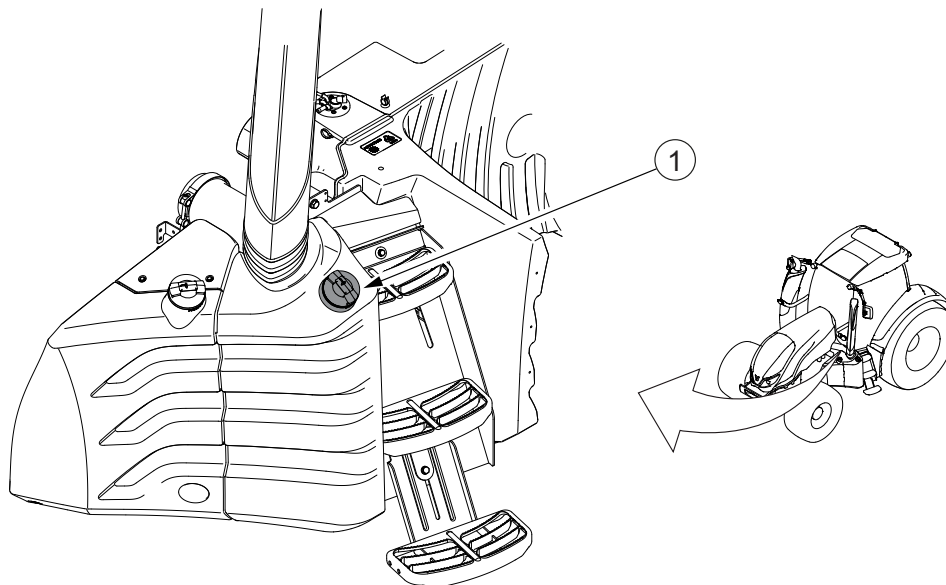
2.13.2 Air suspended operator's seat

Air suspended operator's seat is optional.

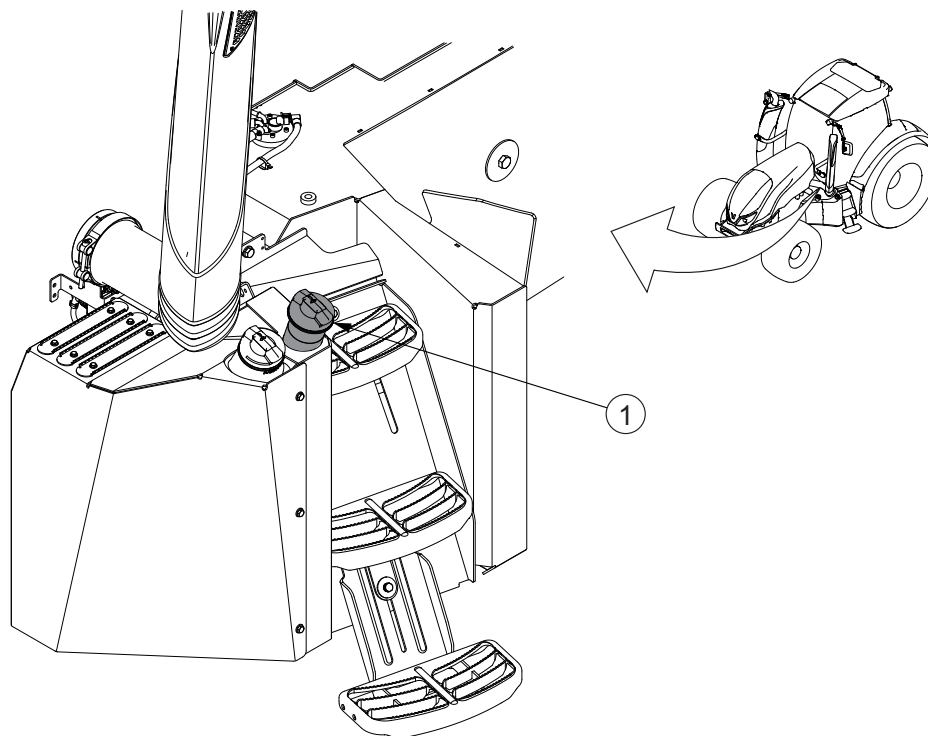


1. Seat depth and cushion angle adjustment
2. Headrest height adjustment and removal
3. Seat heating
4. Storage net for manuals
5. Seat turning lock/release
6. Armrest adjustment
7. Forward/backward adjustment
8. Backrest tilt adjustment
9. Longitudinal suspension adjustment
10. Height and vertical suspension adjustment
11. Suspension stiffness adjustment
12. Seat belt anchor point

1. Open the fuel tank cap.



1. Fuel tank cap



1. Forest equipment (optional) fuel tank cap

2. Fill the tank.
3. Close the fuel tank cap.

3.11.3 Driver's settings display

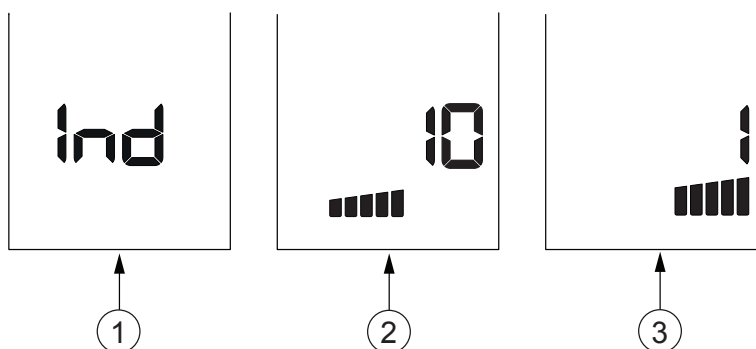
The driver's settings display is divided into indexes section, AUTO2 HI and AUTO2 LO settings section, speed sensor calibration section and I/O test section.

3.11.3.1 Indexes section

You can modify the settings of the tractor's functions in the indexes section.

These settings include, for example, the tyre radius or the automatic shifting between C and D speed ranges.

The indexes section consists of three views: menu level, index list and index value.



1. Index setting menu
2. Index list
3. Index value

3.11.3.2 Adjustable indexes

The following settings of the tractor's functions can be modified in the indexes section:

| Index | Instruction |
|-------|---|
| 0 | Not in use |
| 1 | Setting the tyre parameter |
| 7 | Adjusting the clutch pedal engagement position |
| 10 | Setting the driving start automatics |
| 20 | Activating and deactivating the driving start automatics |
| 30 | Adjusting the power shuttle engagement speed |
| 50 | Activating and deactivating automatic shifting between speed ranges C and D |
| 90 | Adjusting the PTO engagement speed |
| 260 | Not in use |

The settings are instructed in the chapters of each function.

3.17.2.4 Stopping rear power take-off temporarily

You can stop the rear power take-off (PTO) temporarily in the following ways:

- By using the switch for rear PTO.
- By using the speed control knob for rear PTO.
- By using the rear PTO on/off push button (optional) on the rear mudguard.

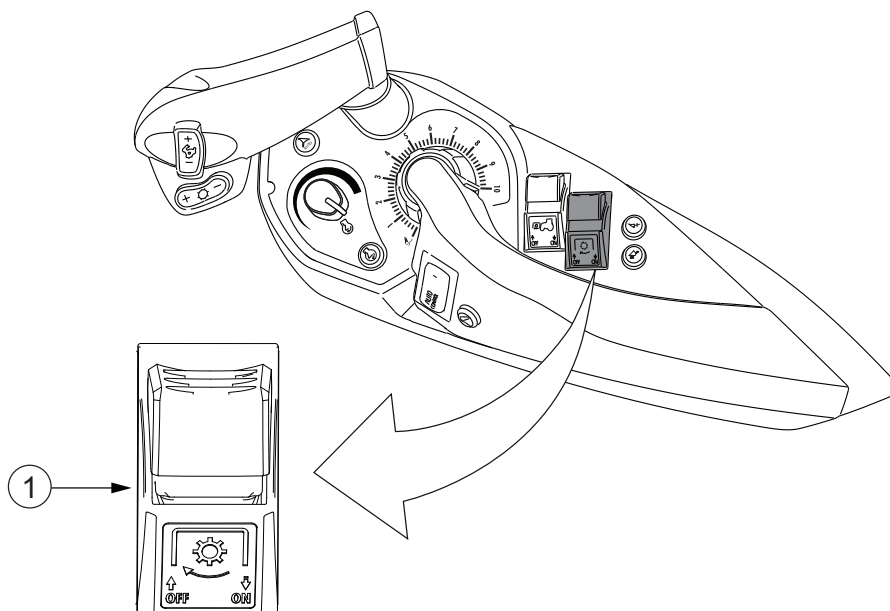


WARNING: When you do not need the PTO, keep the PTO switch in the N position.



WARNING: Use the PTO speed control knob for the actual disengagement and engagement of the PTO. For example, when leaving the cab, turn the knob to the N position, except when using the PTO on/off push button on the mudguard (optional).

- Press down the switch for rear PTO and push it forward.



1. Switch for rear PTO

- If the PTO is in use, so that the indicator light on the proline instrument panel is lit, you can stop the PTO also by pressing the switch and pulling it backward.
- **Turn the PTO speed control knob to the N position to disengage the PTO.**
This is useful when you must stop the PTO fast, for example in an emergency.
- **Press the rear PTO on/off push button on the rear mudguard once.**
After this, the rear PTO on/off push button operates as a start button when pressed for more than 3 seconds.

- Test-run the tractor.

4.6.2 Running the tractor in after a storing period longer than two months

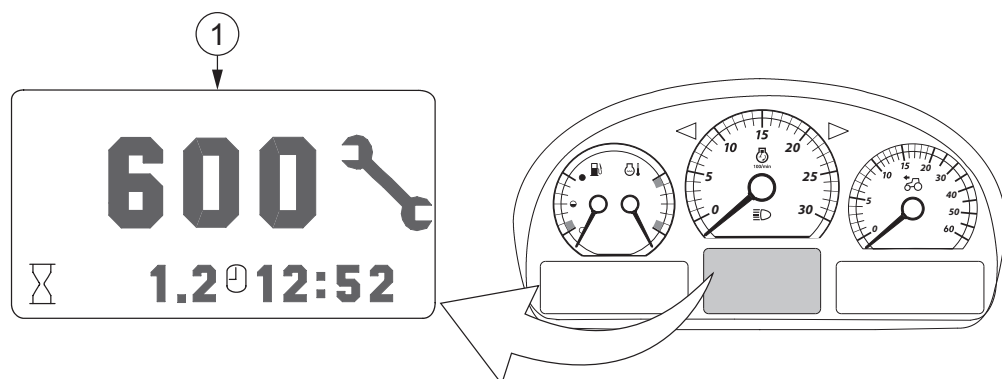
You must run the tractor in after a storing period longer than two months.

- Check the tyre pressures.
- Remove the protective covers from the exhaust pipe and air induction pipe.
- Turn the radiator fan carefully forwards and backwards, so that the shaft works loosely (it may be stuck to the sealing ring of the coolant pump).
- Check that the engine air filters are undamaged.
- Wash off any anti-corrosion oil applied to the exterior of the tractor.
- Check the belts' tightness.
- Check the oil level in the engine and transmission.
- Check the coolant level in the radiator.
- Refill the AdBlue/DEF tank with new AdBlue/DEF.
- Change the selective catalytic reduction (SCR) system supply module main filter.
- Bleed the fuel system of air.
- Refit the battery (fully charged).

IMPORTANT: Make sure that the main power is turned off before disconnecting or reconnecting the battery.

- Start the engine without racing it.
- Test-run the tractor.

4.7 Periodical maintenance



1. Periodical maintenance view

4.7.3.13 Checking the emergency brake

Check the emergency brake periodically.

1. Use the emergency brake to check that it is functioning.

You can test the emergency brake in a normal braking situation.



WARNING: Check the emergency brake in slow driving speed (approximately 10 km/h). Using the emergency brake can lead to wheels locking up.



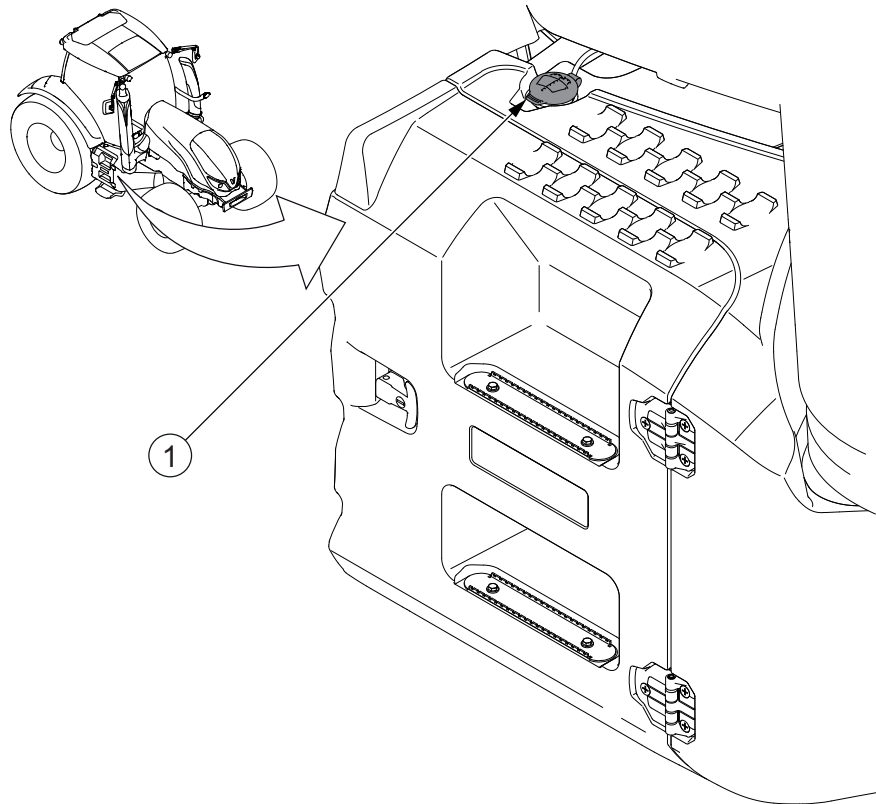
WARNING: Using the emergency brake releases traction.

2. Adjust the parking brake, if necessary.

Normally there is no need for adjusting, because the parking brake is adjusted, when the drive brakes are adjusted.

4.7.3.14 Checking the windscreen washer fluid amount

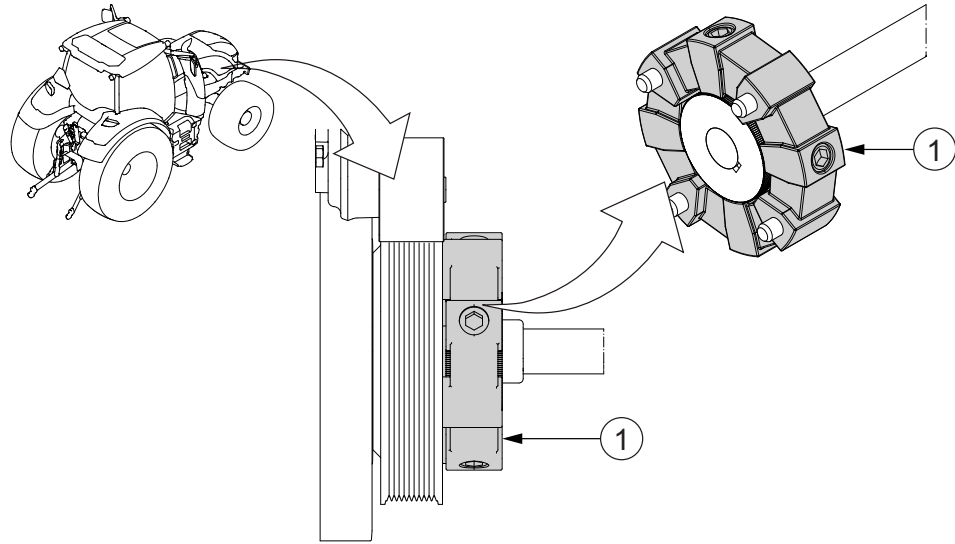
Check the windscreen washer fluid amount periodically.



1. Cap of the windscreen washer fluid reservoir

The washer fluid reservoir is common for the front, rear, and side window washers. The rear and side window washers are extra equipment.

- Check the rubber coupling for tears.



1. Rubber coupling

- Change the rubber coupling when needed.

It is recommended to let an authorised Valtra workshop change the coupling.

4.7.4.21 Checking and greasing the trailer air-pressure brake system

Check and grease the trailer air-pressure brake system periodically.

1. **Grease the rubber surfaces of the trailer quick couplings with Calsium LF grease.**
2. **Check the integrity of the system.**

The system has to be air tight so that after stopping the engine, the pressure does not decrease more than 0.15 bar during 10 minutes (2%). When needed, repair the leaks.

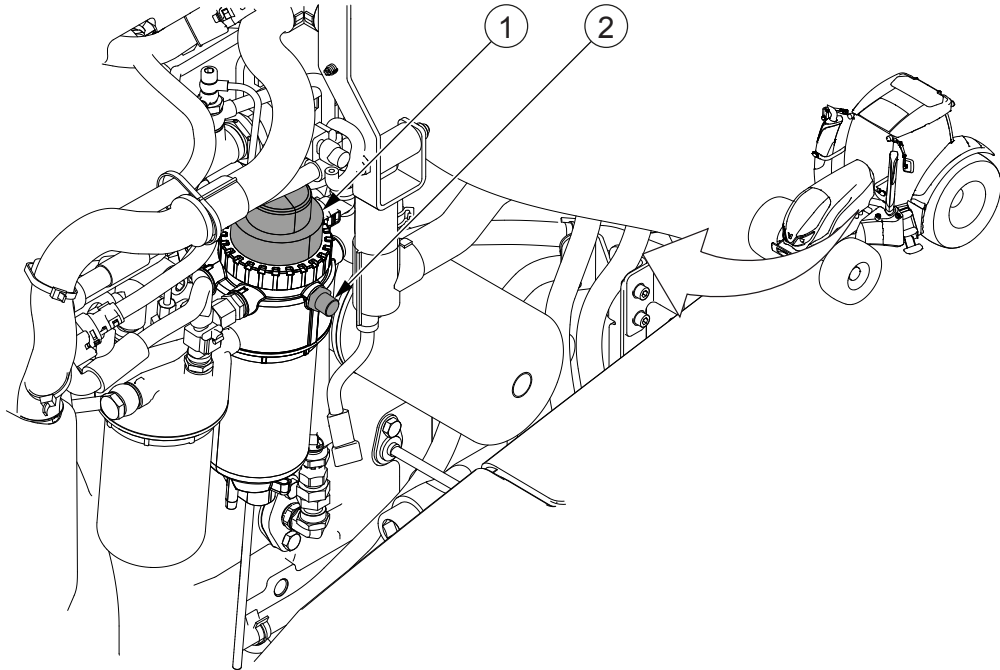
4.7.4.22 Checking the air pressure system's automatic water draining

If the tractor is equipped with an air pressure system (extra equipment), there is a pressure air reservoir under the cab. If the tractor is equipped with pneumatic brakes (extra equipment), there are 2 pressure air reservoirs under the cab. The reservoirs have automatic valves for water draining. The valve functions must be checked frequently.

4.8.5 Engine

4.8.5.1 Bleeding the fuel system

After changing the fuel filters or if the engine has ran out of fuel the fuel system has to be bled.



1. Hand pump
2. Bleeding plug



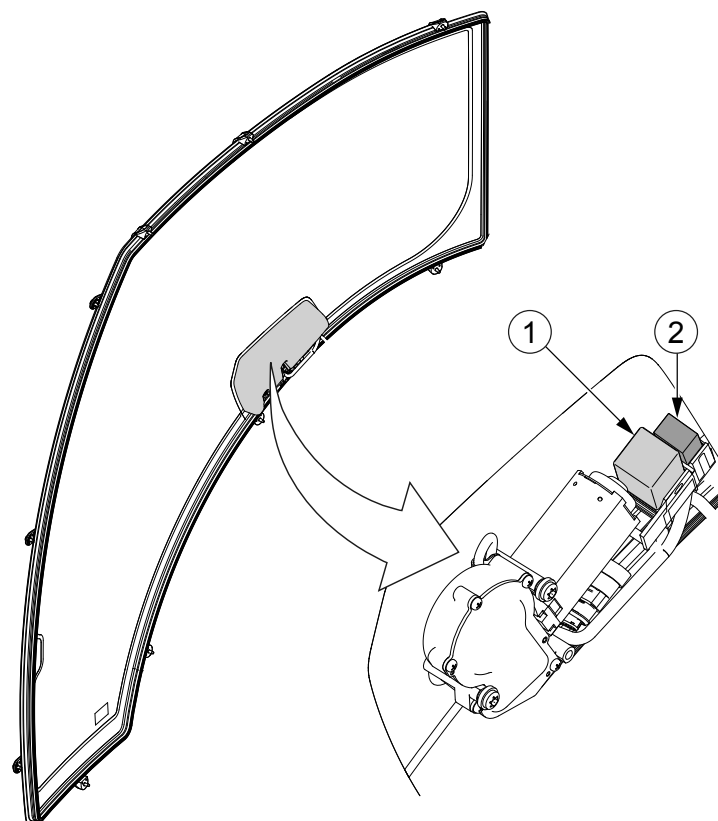
WARNING: Do not work on the common rail high pressure fuel system when the engine is running. Wait at least 30 seconds after stopping the engine. The first high pressure component has to be loosened slowly, so that the pressure inside the fuel system can adjust to ambient pressure. If the jet of high pressure fuel contacts your skin, fuel penetrates the skin causing severe injuries. Get medical help immediately!



WARNING: Only an authorised person is allowed to repair the fuel system.

IMPORTANT: Do not use the hand pump when the engine is running. Do not use any tools or excessive force on the hand pump.

1. Open the bleeding plug.
2. Put a transparent hose in the plug hole and lead it into a suitable container.

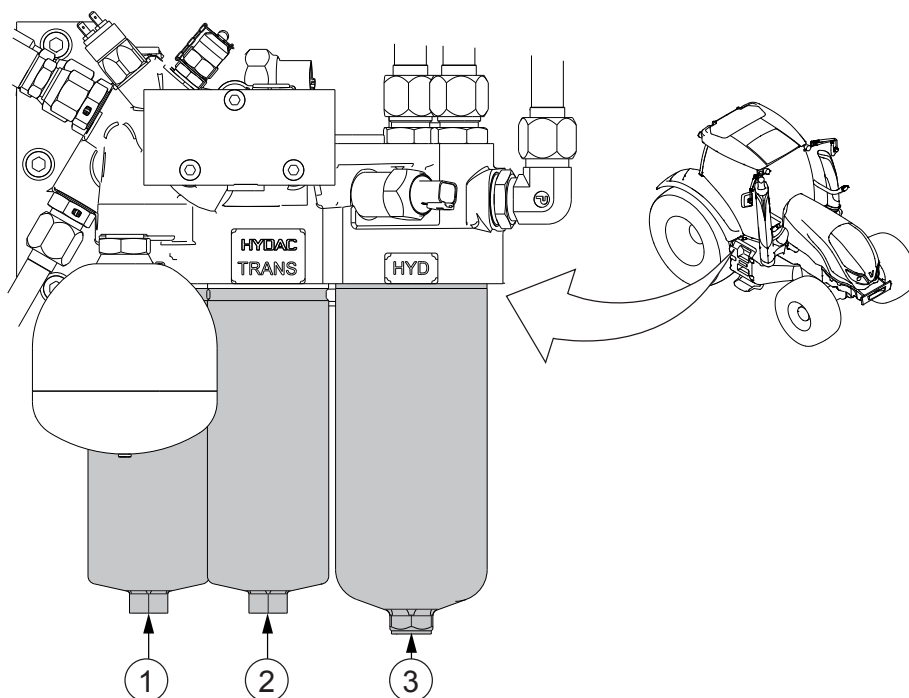


- 1. Relay K34
- 2. Relay K41

4.8.6.7 Fuses and relays in the roof electric centre

The fuses and relays in the roof electric centre are listed in the following tables.

The fuse diagram is on the reverse side of the electric centre cover. There is space for spare fuses. The roof electric centre contains 27 fuses and the nominal current rating of these fuses is 5-30 A.



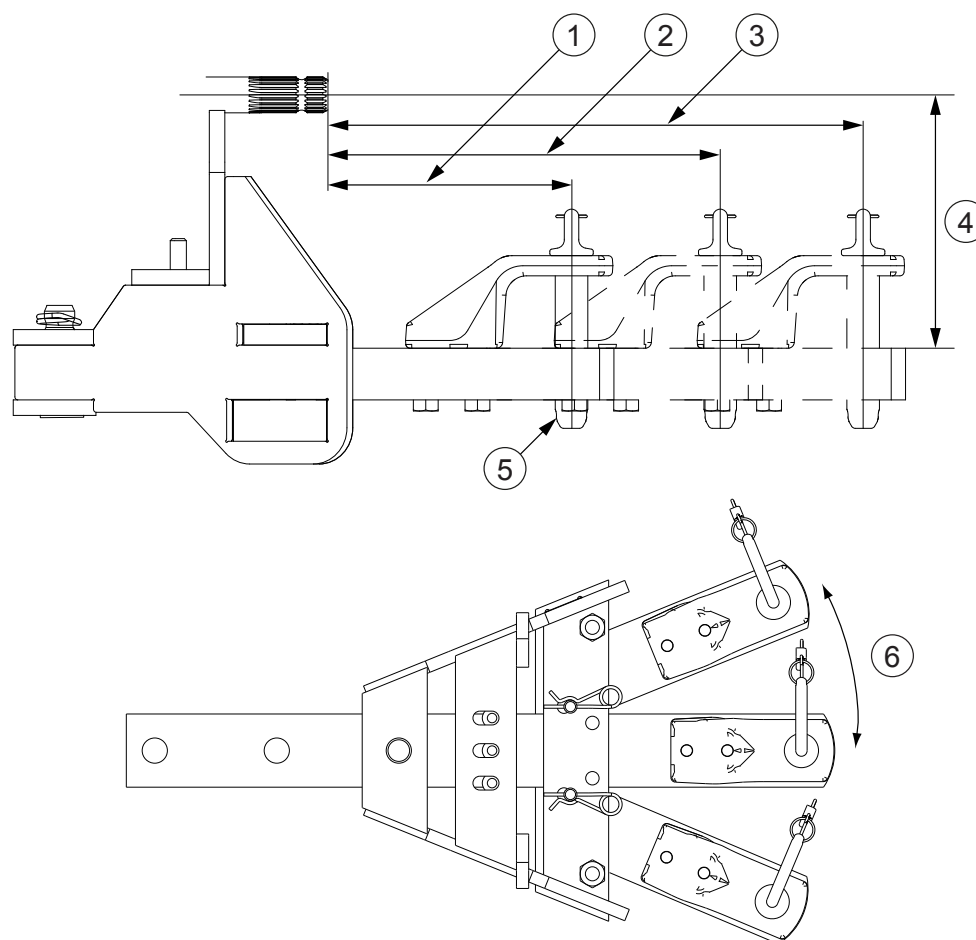
1. Lubrication filter of the transmission system
2. Low pressure filter of the transmission system
3. Return oil filter of the hydraulic system

Oil filters are located on the right side of the tractor under the cab. The oil filters are labelled with following text on the mounting piece on top of it:

- HYD for return oil filter
- LUB for transmission lubrication oil filter
- TRANS for low pressure filter.

1. **Release the pressure sensor wires of the return oil filter of the auxiliary hydraulics.**
2. **Attach an implement to the tractor and connect quick couplings.**
3. **Run the engine.**
4. **Operate the implement connected to the auxiliary hydraulics.**
5. **Check if the pressure oil filter clogging indicator light is lit.**
If the indicator light is not lit, the fault is in the return oil filter.
6. **Change the return oil filter if the blocking is caused by this filter.**

6. Technical specifications



- 1. 250 mm, 2000 kg
- 2. 400 mm, 1200 kg
- 3. 550 mm, 500 kg
- 4. 245 mm
- 5. Drawbar pin Ø31.5 mm
- 6. 21° to both sides

6.14.6.5 Towing device frames

NOTE: The loadings are applicable to all tires.

| | |
|---|---|
| D-value / Max permissible vertical loading for a trailer hitch with all jaws | 89.3 kN / 2000 kg |
| D-value / Towing device frame with piton-fix pin, max permissible vertical loading | 89.3 kN / 3000 kg |
| D-value / Towing device frame with K80 ball hitch, max permissible vertical loading | 89.3 kN / 4000 kg |
| D-value / Towing device frame drawbar, max permissible vertical loading | 78.5 kN / 1200 kg (400 mm), 500 kg (550 mm) |
| Automatic jaw, main pin diameter | 31.5 mm (ISO 6489-2, B) / 38 mm (ISO 6489-2, C) |
| Table continued on next page | |