

1. TABLE OF CONTENTS (CHAPTER 1)

2. INSTRUCTIONS AND CHARTS (CHAPTER 2)

2.1. ABBREVIATIONS, P. 1

INTERNATIONAL TRUCK AND ENGINE CORPORATION				ELECTRICAL CIRCUIT DIAGRAM		CHAPTER 2	
THIS PRINT IS PROVIDED ON A RESTRICTED BASIS AND IS NOT TO BE USED IN ANY WAY DETRIMENTAL TO THE INTEREST OF INTERNATIONAL TRUCK AND ENGINE CORPORATION.				ABBREVIATIONS			

ABBREVIATION	DESCRIPTION	ABBREVIATION	DESCRIPTION	ABBREVIATION	DESCRIPTION
ACCESS	ACCESSORY	CUR	CURRENT	PRESS	PRESSURE
AC	AIR CONDITIONING	DPNL	DASHBOARD	RAD	RADIO
AIR CLNR	AIR CLEANER	DFTR	DEFLECTOR	RR	REAR
ALT	ALTERNATOR	DFR	DEFROSTER	RLY	RELAY
AC	ALTERNATING CURRENT	DEG	DEGREE	RES	RESISTOR
AFTR	AFTERTREATMENT	DIAG	DIAGRAM	R	RIGHT
AMM	AMMETER	DSL	DIESEL	RTR	ROTOR
AMP	AMPERE	DIFF	DIFFERENTIAL	SNSR	SENSOR
AMP HR	AMPERE HOUR	DIMR	DIMMER	SHLD	SHIELD
AMPL	AMPLIFIER	ELEC	ELECTRICAL	SHFT	SHIFTER
ARM	ARMATURE	ELEX	ELECTRONICS	SLPR	SLEEPER
ARSR	ARRESTER	ENG	ENGINE	SLV	SLEEVE
ASSY	ASSEMBLY	EXH	EXHAUST	SPKR	SPEAKER
AUX	AUXILIARY	FL	FLUID	SPR	SPRING
B/U	BACK-UP	FWD	FORWARD	STD	STANDARD
BTRY	BATTERY	FR	FRONT	STRG	STEERING
BM	BENCHMARKING	FREQ	FREQUENCY	STLITE	SATELLITE
BLK	BLOCK	GA	GAUGE	SUNSH	SUNSHADE
BOOS	BOOSTER	GEN	GENERATOR	SW	SWITCH
BOT	BOTTOM	GND	GROUND	SYS	SYSTEM
BK	BRAKE	HARN	HARNESS	TACH	TACHOMETER
BRKR	BREAKER	HDLP	HEADLAMP	TEMP	TEMPERATURE
BRTHR	BREATHER	HTD	HEATED	TERM	TERMINAL
BRI	BRIGHT	HT TR	HEAT TREAT	THROT	THROTTLE
BUZ	BUZZER	HTR	HEATER	THRU	THROUGH
CA	CABLE	HP	HORSEPOWER	TRLR	TRAILER
CD	CANDELA	HYD	HYDRAULIC	XDCR	TRANSDUCER
CP	CANDLEPOWER	ID	IDENTIFICATION	XFER	TRANSFER
CAP	CAPACITOR	IGN	IGNITION	XFMR	TRANSFORMER
CAT	CATERPILLAR	ILLUM	ILLUMINATION	XSTR	TRANSISTOR
CHAS	CHASSIS	IND	INDICATOR	XMSN	TRANSMISSION
CH	CHOKE	INST	INSTRUMENT	XMTR	TRANSMITTER
CIRC	CIRCUIT	INT	INTERMITTENT	TRK	TRUCK
CLK	CLOCK	L	LEFT	UPR	UPPER
CW	CLOCKWISE	LT	LIGHT	VLV	VALVE
CLSTR	CLUSTER	LTR	LIGHTER	VERT	VERTICAL
CL	CLUTCH	LWR	LOWER	VM	VOLTMETER
COL	COLUMN	MAG	MAGNET	VOL	VOLUME
COMM	COMMUTATOR	MOD	MODULATOR	WSHR	WASHER
CMPNT	COMPONENT	MDL	MODULE	WHL	WHEEL
CPRSR	COMPRESSOR	MOT	MOTOR	WDO	WINDOW
CONN	CONNECT	MTD	MOUNTED	WSHLD	WINDSHIELD
CONT	CONTINUED	NEG	NEGATIVE	WPR	WIPER
CSL	CONSOLE	N/	NOT WITH	W/	WITH
CONT	CONTACT	NO.	NUMBER	W/O	WITHOUT
CONT	CONTROL	PASS	PASSENGER		
CONV	CONVERTER	POSN	POSITION		
CLR	COOLER	POS	POSITIVE		
CTSY	COURTESY	POT	POTENTIOMETER		
CRUS	CRUISE	PWR	POWER		

CHK	DATE	CHANGE	REV	REFERENCE	DRAWN	NAME
CNA1	14JAN09	TITLE WAS CIRCUIT	B	61254R	U00K640	CIRCUIT DIAGRAM, PROSTAR, LONESTAR
	DIAGRAM, PROSTAR				RELEASE NO. 59637L	DATE 31AUG06
						PART NO. AE08055894
						SHEET 001

Figure 1 Abbreviations

2.8. RELAY FUNCTION AND WIRING GUIDE, P. 8

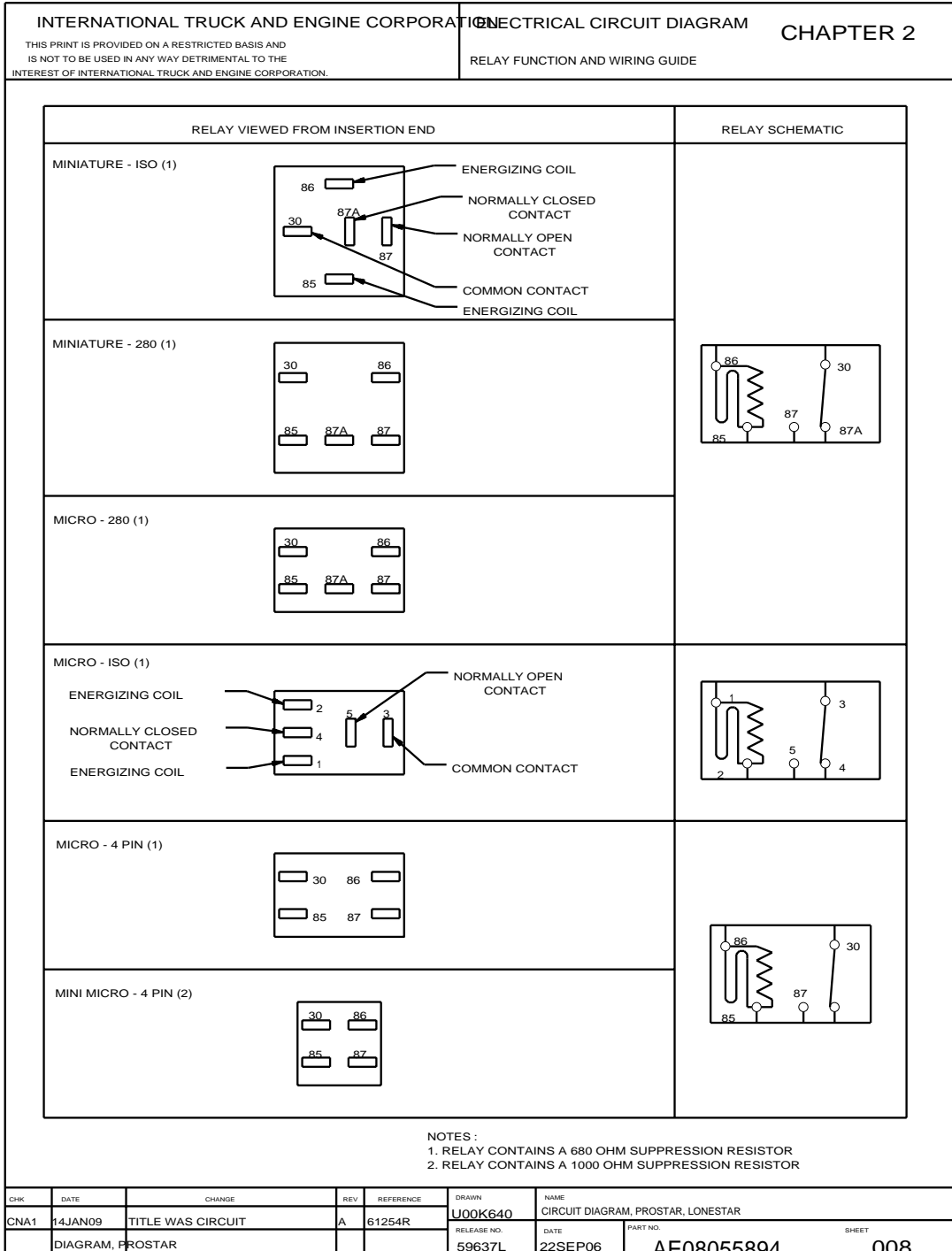


Figure 8 Relay Function and Wiring Guide

3.10. IGNITION FEED — STANDARD (LONESTAR), P. 9A

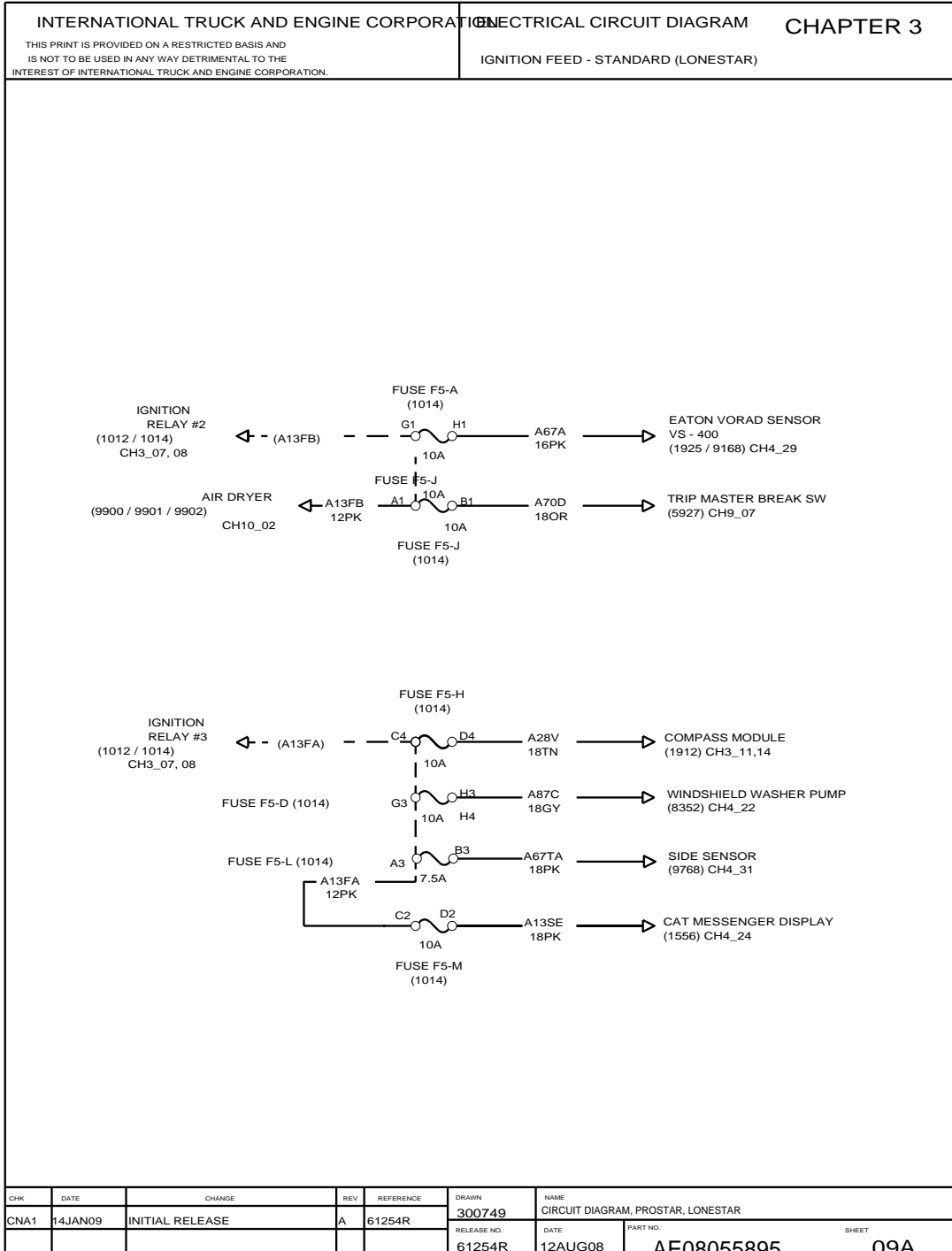


Figure 22 Ignition Feed — Standard (LoneStar)

3.30. GROUND — CAB, P. 26

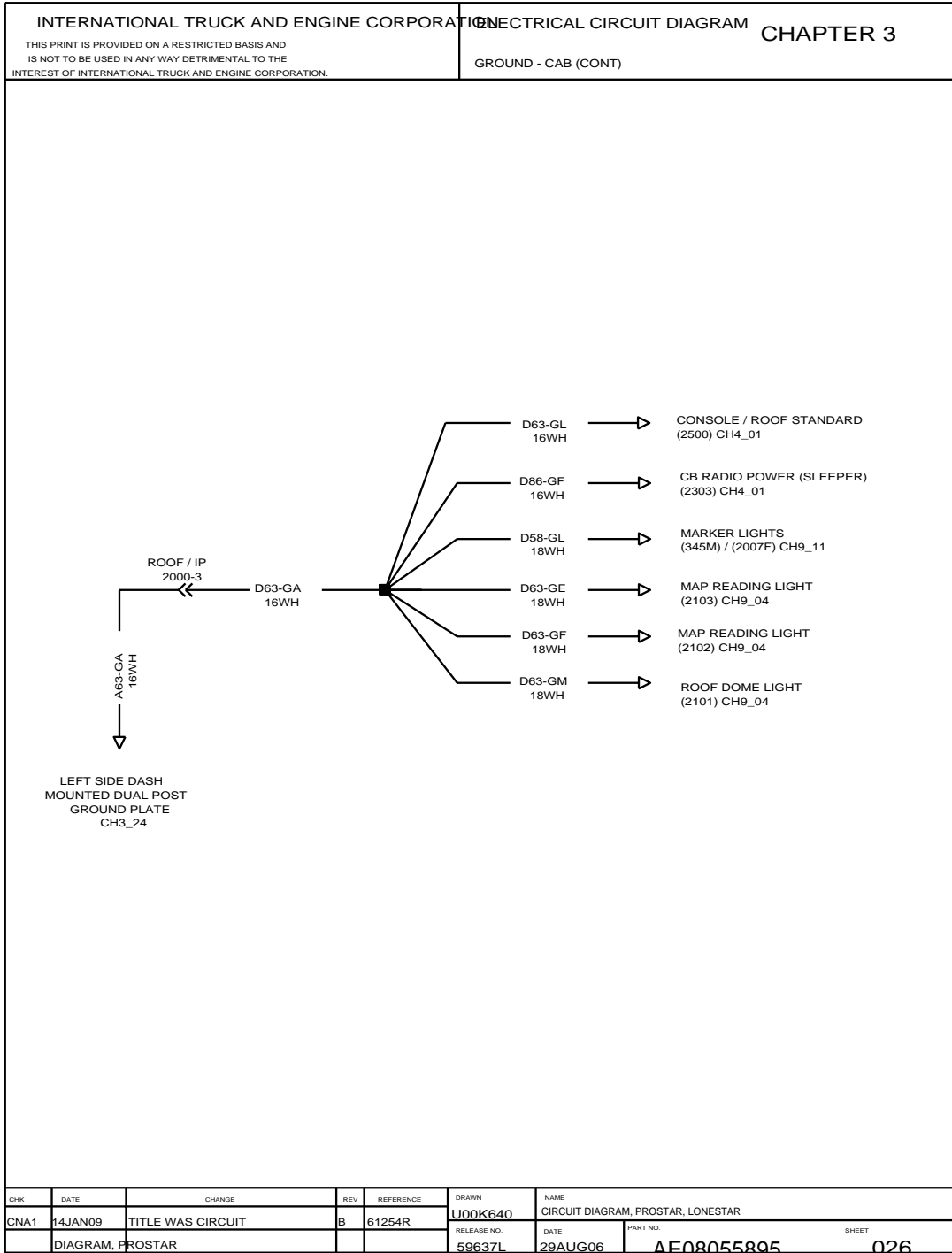


Figure 42 Ground — Cab

4.39. AWARE II, P. 35

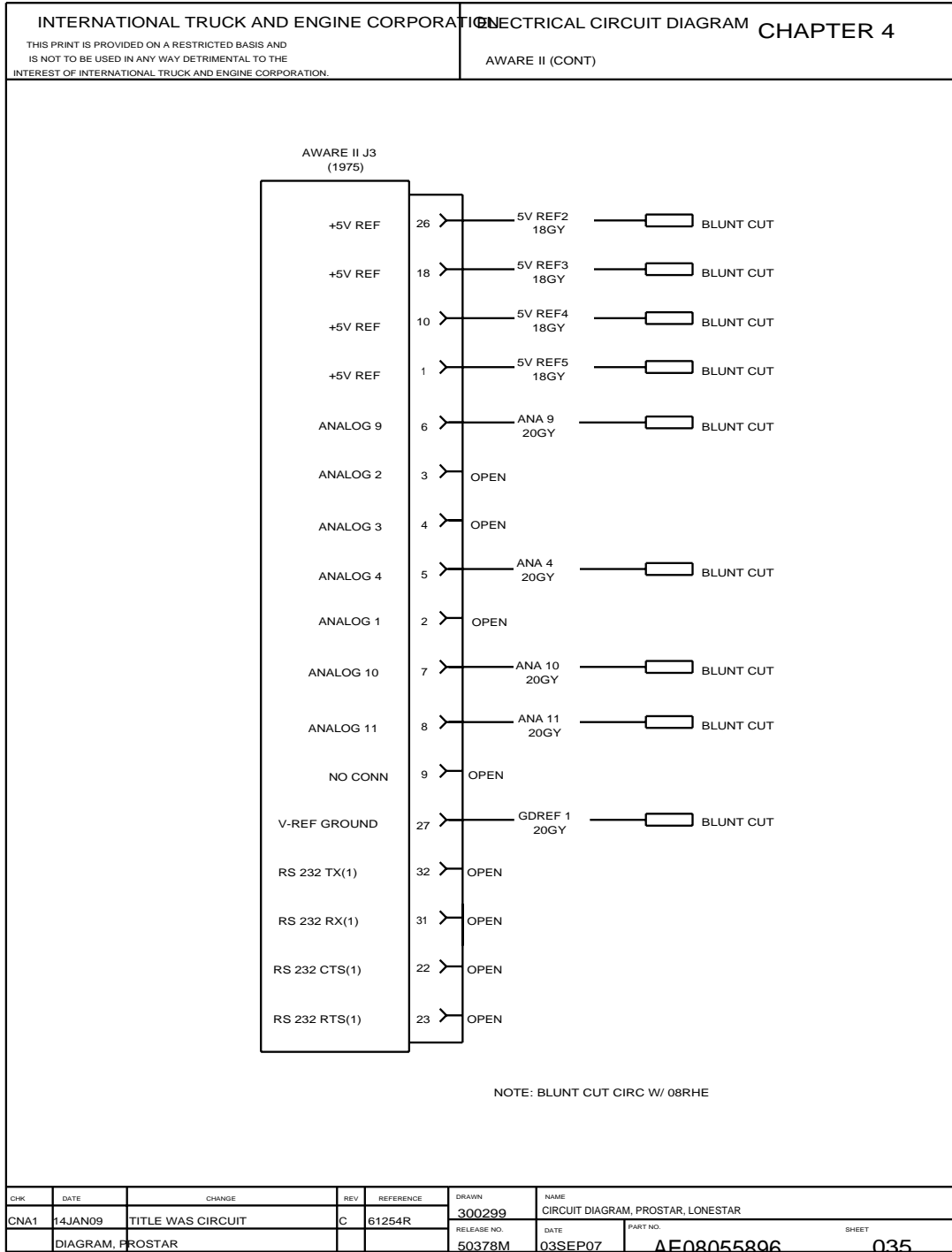


Figure 89 AWARE II

8.12. SECONDARY INSTRUMENT CLUSTER, P. 12

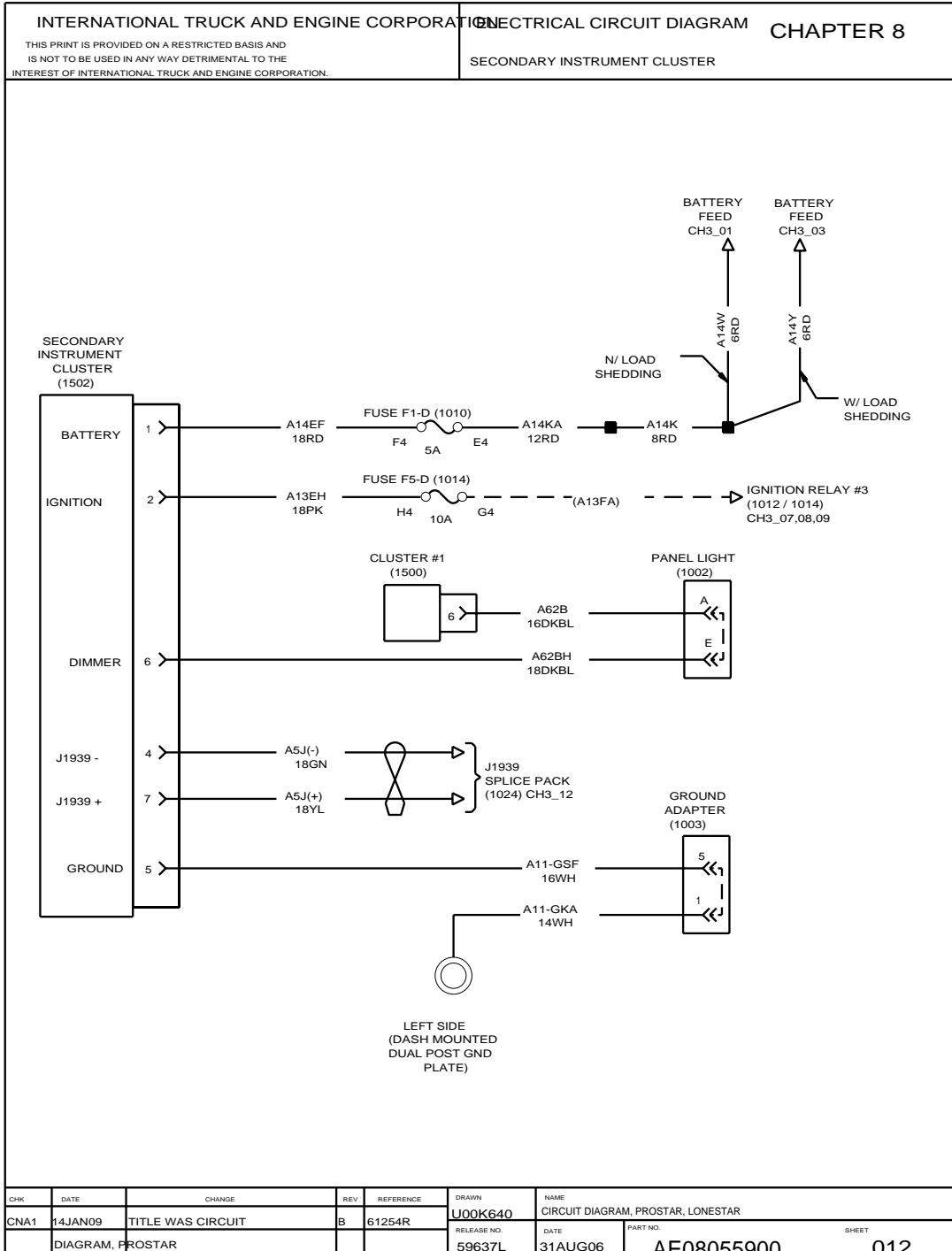


Figure 142 Secondary Instrument Cluster

10.6. BATTERY FEED — TRAILER AUXILIARY, P. 6

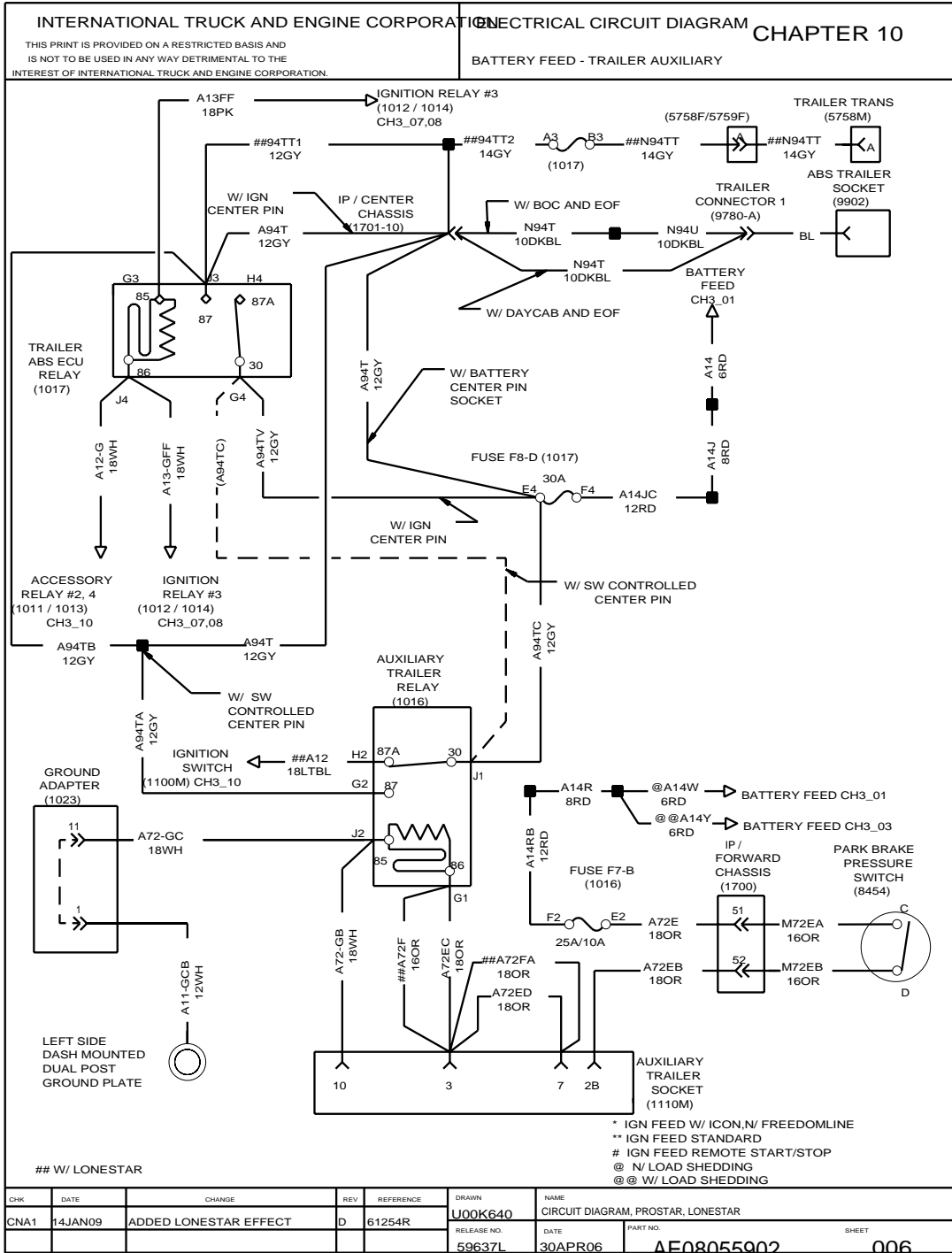


Figure 178 Battery Feed — Trailer Auxiliary

12.20. NO IDLE HVAC W/BERGSTROM FUEL FIRED HEATER, P. 19

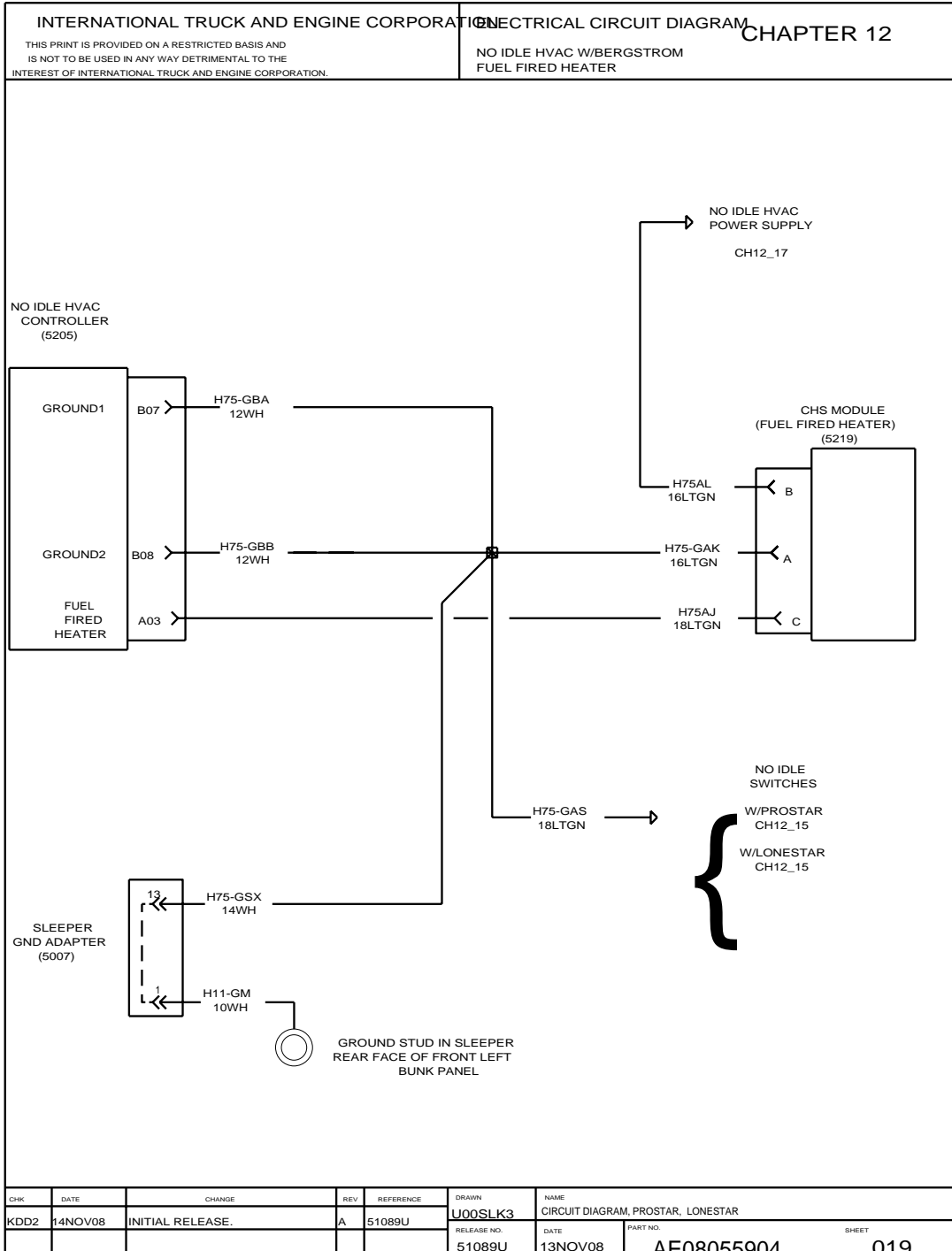


Figure 220 No Idle HVAC w/Bergstrom Fuel Fired Heater

14.21. CONNECTOR COMPOSITES (1111M), (1112M), (1113M), P. 18

INTERNATIONAL TRUCK AND ENGINE CORPORATION		ELECTRICAL CIRCUIT DIAGRAM		CHAPTER 14	
THIS PRINT IS PROVIDED ON A RESTRICTED BASIS AND IS NOT TO BE USED IN ANY WAY DETRIMENTAL TO THE INTEREST OF INTERNATIONAL TRUCK AND ENGINE CORPORATION.		CONNECTOR BODY COMPOSITE - MATING VIEW SHOWN			

PANIC BUTTON
(1111M)
(LOCATED IN INSTRUMENT PANEL CENTER)

CONNECTOR 3520850C1

CAV	CIR	GAUGE	COLOR	TERMINAL
1	-	-	-	-
2B*	A98NS	18	BK	1661224C1
2B#	A11-GSA	18	WH	1661224C1
3#	A98J	18	BK	1661224C1
3*	A98Z	18	BK	1661224C1
4	-	-	-	-
5B	-	-	-	-
6	-	-	-	-
7#	A62SDA	18	DKBL	1661224C1
7*	A98NL	18	BK	1661224C1
8#%	A62SDA	18	DKBL	3541250C1
	A62SD	18	DKBL	
8*	A62N	18	DKBL	1661224C1
9	-	-	-	-
10#	A11-GSB	18	WH	1661224C1
10*	A11-GN	18	WH	1661224C1

* W/ TELEMATICS ALERT SWITCH
W/ QUALCOMM PANIC BUTTON
% CRIMPED TOGETHER

SPARE # 1
(1112M)
(LOCATED IN INSTRUMENT PANEL CENTER)

CONNECTOR 3520850C1

CAV	CIR	GAUGE	COLOR	TERMINAL
1	-	-	-	-
2B	A14SA	18	RD	1661224C1
3%	A14SAA	18	RD	3541250C1
	A14SAB	18	RD	3541250C1
4	-	-	-	-
5B	-	-	-	-
6	-	-	-	-
7	A14SAA	18	RD	1661224C1
8	A62SA	18	DKBL	1661224C1
9	A14-GSA	18	WH	1661224C1
10	-	-	-	-

% CRIMPED TOGETHER

SPARE # 2
(1113M)
(LOCATED IN INSTRUMENT PANEL CENTER)

CONNECTOR 3520850C1

CAV	CIR	GAUGE	COLOR	TERMINAL
1	-	-	-	-
2B	A14SB	18	RD	1661224C1
3%	A14SBB	18	RD	3541250C1
	A14SBA	18	RD	3541250C1
4	-	-	-	-
5B	-	-	-	-
6	-	-	-	-
7	A14SBA	18	RD	1661224C1
8	A62SB	18	DKBL	1661224C1
9	A14-GSC	18	WH	1661224C1
10	-	-	-	-

% CRIMPED TOGETHER

CHK	DATE	CHANGE	REV	REFERENCE	DRAWN	NAME
CNA1	14JAN09	TITLE WAS CIRCUIT	B	61254R	U00K640	CIRCUIT DIAGRAM, PROSTAR, LONESTAR
		DIAGRAM, PROSTAR			59637L	06SEP06 AE08055906 018

Figure 250 Connector Composites (1111M), (1112M), (1113M)

14.61. CONNECTOR COMPOSITES (1960), P. 52

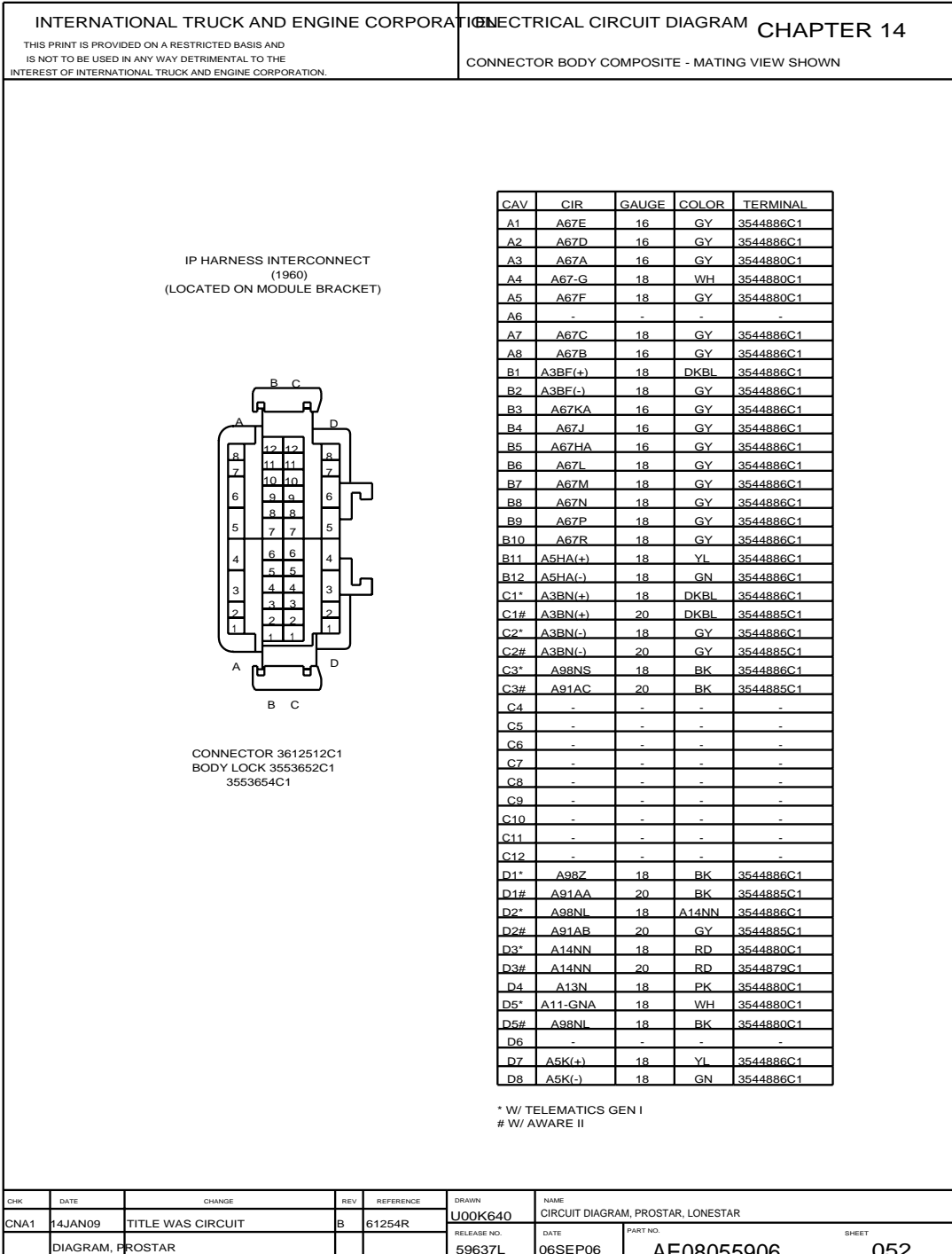


Figure 290 Connector Composites (1960)

14.90. CONNECTOR COMPOSITES (5106), (5107), (5109), (5110), (5111), P. 72

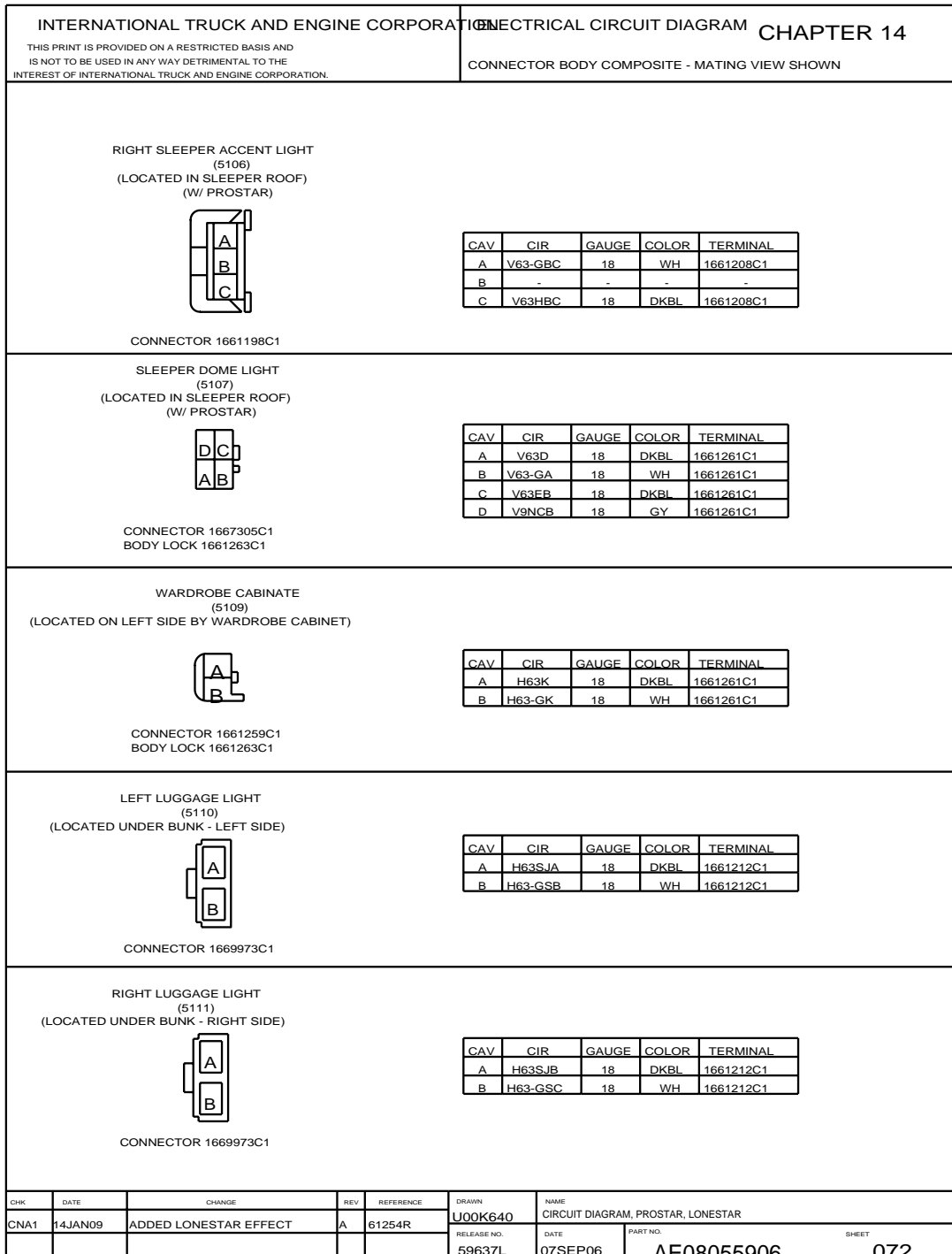


Figure 319 Connector Composites (5106), (5107), (5109), (5110), (5111)

14.111. CONNECTOR COMPOSITES (6020), (6021), (6033), P. 85A

INTERNATIONAL TRUCK AND ENGINE CORPORATION

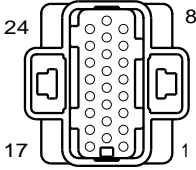
THIS PRINT IS PROVIDED ON A RESTRICTED BASIS AND IS NOT TO BE USED IN ANY WAY DETRIMENTAL TO THE INTEREST OF INTERNATIONAL TRUCK AND ENGINE CORPORATION.

ELECTRICAL CIRCUIT DIAGRAM

CHAPTER 14

CONNECTOR BODY COMPOSITE - MATING VIEW SHOWN

EIM CONNECTOR (6020)
(LOCATED ON LEFT SIDE OF ENGINE)
(W/ PROSTAR)

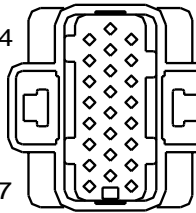


CONNECTOR 3562311C1

& MUTUALLY EXCLUSIVE

CAV	CIRCUIT	GAUGE	COLOR	TERMINAL
1	PLUG	-	-	3562316C1
2	K34C	18	TN	3562314C1
3	K97F	18	VT	3562314C1
4	K34D	18	TN	3562314C1
5	K97A1	18	VT	3562314C1
6	K92A16	16	WH	3562315C1
7	K92B16	16	WH	3562315C1
8	K97A2	18	VT	3562314C1
9	PLUG	-	-	3562316C1
10	PLUG	-	-	3562316C1
11	K92A8	18	TN	3562314C1
12	K6S(+)	18	YL	3562314C1
13	K5S(-)	18	GN	3562314C1
14	K92A9	18	TN	3562314C1
15	PLUG	-	-	3562316C1
16	PLUG	-	-	3562316C1
17&	K92A10	18	TN	3562314C1
17&	K47T	18	GY	3562314C1
18	PLUG	-	-	3562316C1
19	K92A11	18	TN	3562314C1
20	K92A12	18	TN	3562314C1
21	K92A13	18	TN	3562314C1
22	PLUG	-	-	3562316C1
23	PLUG	-	-	3562316C1
24	PLUG	-	-	3562316C1

EIM CONNECTOR 4 (6021)
(LOCATED ON LEFT SIDE OF ENGINE)
(W/ PROSTAR)

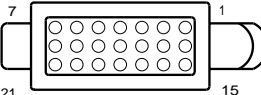


CONNECTOR 3562312C1

* W/ MANUAL XMSN
W/ MERITOR G XMSN
% W/ AUTOSHIFT & ULTRASHIFT XMSN

CAV	CIRCUIT	GAUGE	COLOR	TERMINAL
1	K14G	16	RD	3562315C1
2	K14H	16	RD	3562315C1
3	PLUG	-	-	3562316C1
4	K97CB	18	VT	3562314C1
5	PLUG	-	-	3562316C1
6	K92A7	18	TN	3562314C1
7	PLUG	-	-	3562316C1
8	PLUG	-	-	3562316C1
9#	K47A	16	GY	3562315C1
9*	K47A	18	GY	3562314C1
9*	K47E	18	GY	3562314C1
10#	K47	16	GY	3562315C1
10*	K47D	18	GY	3562314C1
10*	K47	18	GY	3562314C1
11	PLUG	-	-	3562316C1
12	PLUG	-	-	3562316C1
13	PLUG	-	-	3562316C1
14	K21B2	18	TN	3562314C1
15	PLUG	-	-	3562316C1
16	PLUG	-	-	3562316C1
17	K92A14	18	TN	3562314C1
18	K99B	18	VT	3562314C1
19	PLUG	-	-	3562316C1
20%	K3BB(+)	18	DKBL	3562314C1
20*#	K3BA(+)	18	DKBL	3562314C1
21%	K3BB(-)	18	GY	3562314C1
21*#	K3BA(-)	18	GY	3562314C1
22	PLUG	-	-	3562316C1
23	K97NA	18	VT	3562314C1
24	K97B	18	VT	3562314C1

ENGINE SENSOR INTERFACE (6033)
(LOCATED ON LEFT SIDE OF ENGINE)
(W/ PROSTAR)



CONNECTOR 3803137C1
BODY LOCK 3803139C1
3803117C1

CAV	CIRCUIT	GAUGE	COLOR	TERMINAL	SEAL/SLEEVE
10	K98Y1	18	YL	3803140C1	3803134C1
11	PLUG	-	-	3803138C1	-
12	PLUG	-	-	3803138C1	-
13	K91A	18	VT	3803140C1	3803134C1
14	PLUG	-	-	3803138C1	-
15	K14A	16	RD	3803140C1	3803134C1
16	K14B	16	RD	3803140C1	3803134C1
17	K14C	16	RD	3803140C1	3803134C1
18	K14D	16	RD	3803140C1	3803134C1
19	PLUG	-	-	3803138C1	-
20	PLUG	-	-	3803138C1	-
21	K14F	18	RD	3803140C1	3803134C1
1	K10-GC	16	WH	3803140C1	3803134C1
2	K10-GD	16	WH	3803140C1	3803134C1
3	K10-GE	16	WH	3803140C1	3803134C1
4	K10-GF	16	WH	3803140C1	3803134C1
5	PLUG	-	-	3803138C1	-
6	PLUG	-	-	3803138C1	-
7	K10-GJ	16	WH	3803140C1	3803134C1
8	K13A1	18	GY	3803140C1	3803134C1
9	K98GN1	18	GN	3803140C1	3803134C1

CHK	DATE	CHANGE	REV	REFERENCE	DRAWN	NAME
CNA1	16JUN09	REVISED AND REDRAWN.	D	61610P	300152	CIRCUIT DIAGRAM, PROSTAR, LONESTAR
					RELEASE NO. 50297W	DATE 18OCT07
						PART NO. AE08055906
						SHEET 85A

Figure 340 Connector Composites (6020), (6021), (6033)

14.132. CONNECTOR COMPOSITES (8501), (8502), (8503), (8504), P. 99

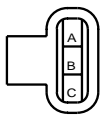
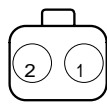
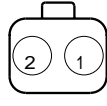
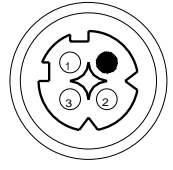
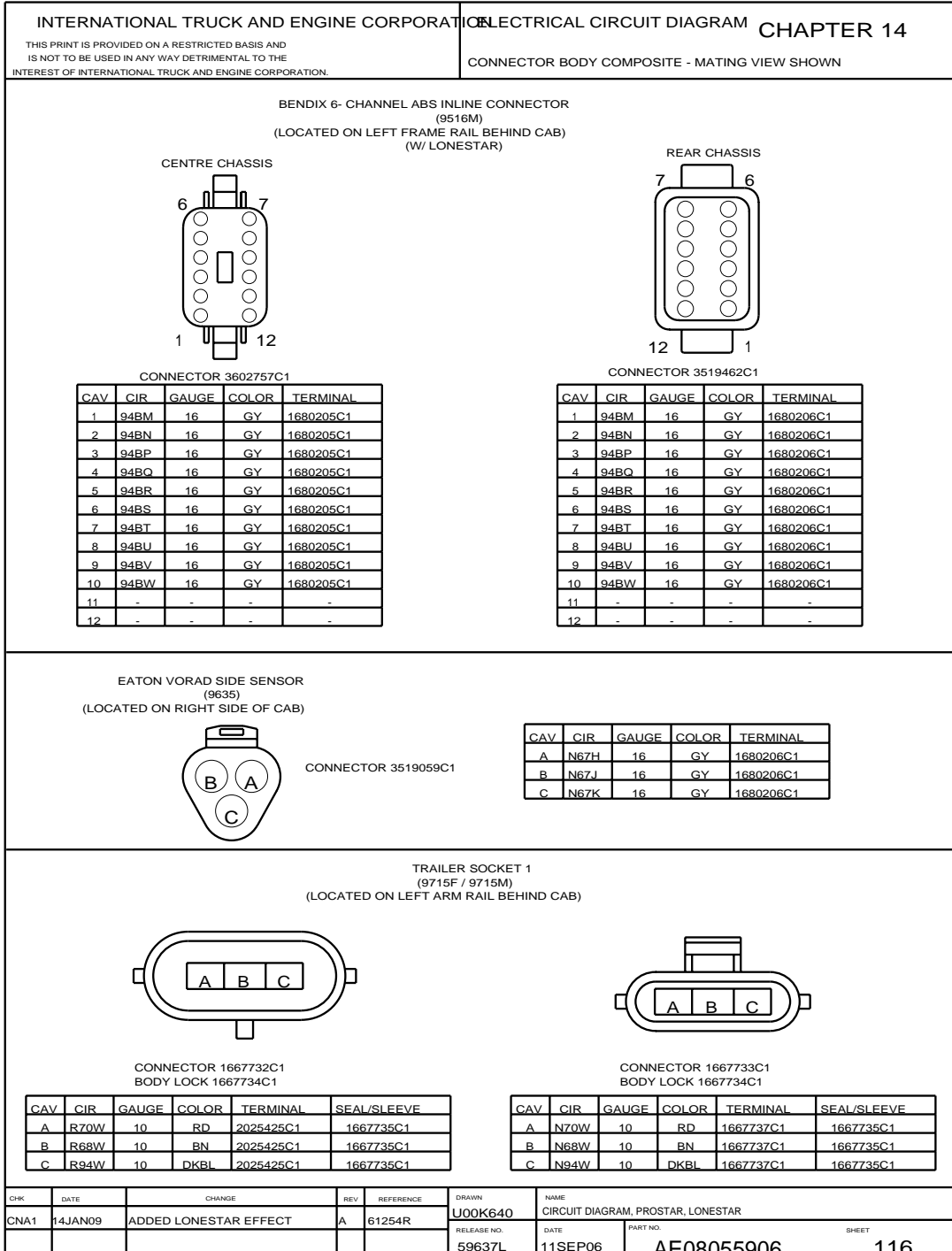
<p>INTERNATIONAL TRUCK AND ENGINE CORPORATION</p> <p><small>THIS PRINT IS PROVIDED ON A RESTRICTED BASIS AND IS NOT TO BE USED IN ANY WAY DETRIMENTAL TO THE INTEREST OF INTERNATIONAL TRUCK AND ENGINE CORPORATION.</small></p>	<p>ELECTRICAL CIRCUIT DIAGRAM CHAPTER 14</p> <p>CONNECTOR BODY COMPOSITE - MATING VIEW SHOWN</p>																								
<p>BENDIX RIGHT ABS MODULATOR (8501) (LOCATED ON RIGHT FRAME RAIL BY FRONT AXLE)</p>																									
	<table border="1" style="font-size: small;"> <thead> <tr> <th>CAV</th> <th>CIR</th> <th>GAUGE</th> <th>COLOR</th> <th>TERMINAL</th> <th>SEAL/SLEEVE</th> </tr> </thead> <tbody> <tr> <td>A</td> <td>M94H</td> <td>18</td> <td>GY</td> <td>2033819C1</td> <td>1652325C1</td> </tr> <tr> <td>B</td> <td>M94J</td> <td>18</td> <td>GY</td> <td>2033819C1</td> <td>1652325C1</td> </tr> <tr> <td>C</td> <td>M94K</td> <td>18</td> <td>GY</td> <td>2033819C1</td> <td>1652325C1</td> </tr> </tbody> </table>	CAV	CIR	GAUGE	COLOR	TERMINAL	SEAL/SLEEVE	A	M94H	18	GY	2033819C1	1652325C1	B	M94J	18	GY	2033819C1	1652325C1	C	M94K	18	GY	2033819C1	1652325C1
CAV	CIR	GAUGE	COLOR	TERMINAL	SEAL/SLEEVE																				
A	M94H	18	GY	2033819C1	1652325C1																				
B	M94J	18	GY	2033819C1	1652325C1																				
C	M94K	18	GY	2033819C1	1652325C1																				
<p>CONNECTOR 1686834C1 BODY LOCK 1664408C1</p>																									
<p>BENDIX LEFT AIR ABS SPEED SENSOR (8502) (LOCATED ON LEFT FRAME RAIL BY FRONT AXLE)</p>																									
	<table border="1" style="font-size: small;"> <thead> <tr> <th>CAV</th> <th>CIR</th> <th>GAUGE</th> <th>COLOR</th> <th>TERMINAL</th> </tr> </thead> <tbody> <tr> <td>1</td> <td>M94C</td> <td>18</td> <td>GY</td> <td>1680205C1</td> </tr> <tr> <td>2</td> <td>M94D</td> <td>18</td> <td>GY</td> <td>1680205C1</td> </tr> </tbody> </table>	CAV	CIR	GAUGE	COLOR	TERMINAL	1	M94C	18	GY	1680205C1	2	M94D	18	GY	1680205C1									
CAV	CIR	GAUGE	COLOR	TERMINAL																					
1	M94C	18	GY	1680205C1																					
2	M94D	18	GY	1680205C1																					
<p>CONNECTOR 1684261C1 BODY LOCK 1684263C1</p>																									
<p>BENDIX RIGHT AIR ABS SPEED SENSOR (8503) (LOCATED ON RIGHT FRAME RAIL BY FRONT AXLE)</p>																									
	<table border="1" style="font-size: small;"> <thead> <tr> <th>CAV</th> <th>CIR</th> <th>GAUGE</th> <th>COLOR</th> <th>TERMINAL</th> </tr> </thead> <tbody> <tr> <td>1</td> <td>M94E</td> <td>18</td> <td>GY</td> <td>1680205C1</td> </tr> <tr> <td>2</td> <td>M94F</td> <td>18</td> <td>GY</td> <td>1680205C1</td> </tr> </tbody> </table>	CAV	CIR	GAUGE	COLOR	TERMINAL	1	M94E	18	GY	1680205C1	2	M94F	18	GY	1680205C1									
CAV	CIR	GAUGE	COLOR	TERMINAL																					
1	M94E	18	GY	1680205C1																					
2	M94F	18	GY	1680205C1																					
<p>CONNECTOR 1684261C1 BODY LOCK 1684263C1</p>																									
<p>WABCO LEFT ABS MODULATOR (8504) (LOCATED ON LEFT FRAME RAIL BY FRONT AXLE)</p>																									
	<table border="1" style="font-size: small;"> <thead> <tr> <th>CAV</th> <th>CIR</th> <th>GAUGE</th> <th>COLOR</th> <th>TERMINAL</th> </tr> </thead> <tbody> <tr> <td>1</td> <td>M94M</td> <td>18</td> <td>GY</td> <td>ASSY</td> </tr> <tr> <td>2</td> <td>M94MA</td> <td>18</td> <td>GY</td> <td>ASSY</td> </tr> <tr> <td>3</td> <td>M94MB</td> <td>18</td> <td>GY</td> <td>ASSY</td> </tr> </tbody> </table>	CAV	CIR	GAUGE	COLOR	TERMINAL	1	M94M	18	GY	ASSY	2	M94MA	18	GY	ASSY	3	M94MB	18	GY	ASSY				
CAV	CIR	GAUGE	COLOR	TERMINAL																					
1	M94M	18	GY	ASSY																					
2	M94MA	18	GY	ASSY																					
3	M94MB	18	GY	ASSY																					
<p>CONNECTOR 3667691C1</p>																									
CHK	DATE	CHANGE	REV	REFERENCE	DRAWN	NAME																			
CNA1	14JAN09	TITLE WAS CIRCUIT	B	61254R	U00K640	CIRCUIT DIAGRAM, PROSTAR, LONESTAR																			
		DIAGRAM, PROSTAR			59637L	DATE: 08SEP06 PART NO: AE08055906 SHEET: 099																			

Figure 361 Connector Composites (8501), (8502), (8503), (8504)

14.149. CONNECTOR COMPOSITES (9516M), (9635), (9715F/9715M), P. 116



TRAILER SOCKET 1
(9715F / 9715M)
(LOCATED ON LEFT ARM RAIL BEHIND CAB)

CAV	CIR	GAUGE	COLOR	TERMINAL	SEAL/SLEEVE
A	R70W	10	RD	2025425C1	1667735C1
B	R68W	10	BN	2025425C1	1667735C1
C	R94W	10	DKBL	2025425C1	1667735C1

CAV	CIR	GAUGE	COLOR	TERMINAL	SEAL/SLEEVE
A	N70W	10	RD	1667737C1	1667735C1
B	N68W	10	BN	1667737C1	1667735C1
C	N94W	10	DKBL	1667737C1	1667735C1

Figure 378 Connector Composites (9516M), (9635), (9715F/9715M)