

Service Manual: 01 - SALES CHECK -- (95B) - MACAN

WM 010100 SALES CHECK (ALL MODELS) > SALES CHECK

Information

- The term "checking" includes all necessary subsequent work such as adjusting, readjusting, correcting and topping up, but does not include repairing, replacing and reconditioning parts or assemblies.

Work instruction for order no.							
Dealer No.							

Vehicle Ident. No.

--	--	--	--	--	--	--	--	--	--	--	--	--	--	--	--	--	--

	OK ⁽¹⁾	Not OK ⁽²⁾
Check PIWIS information system for open workshop campaigns and recall campaigns for the vehicle		
Check conformity of vehicle identification number on the vehicle, on the data carrier, in the vehicle registration documents and on-board literature → 0X01IN CHECKING VEHICLE IDENTIFICATION NUMBER		
Activate PCC/PVTS - vehicles with Vehicle Tracking System (VTS) → 906425 ACTIVATING PCC/PVTS		
Remove transport locks and transport protection → 0X01IN REMOVING TRANSPORT PROTECTION		
Diagnostic system: Perform vehicle handover; read out and erase fault memory. → 0X01IN DIAGNOSTIC SYSTEM: PERFORMING VEHICLE HANDOVER		

Fig 5: Removing Reinforcement For Bonding



Courtesy of PORSCHE CARS NORTH AMERICA, INC.

Orange	Resistance spot-welding
Green	Resistance spot-welding + bonding
Red	Plug-welding/apply a full weld using inert gas without bonding

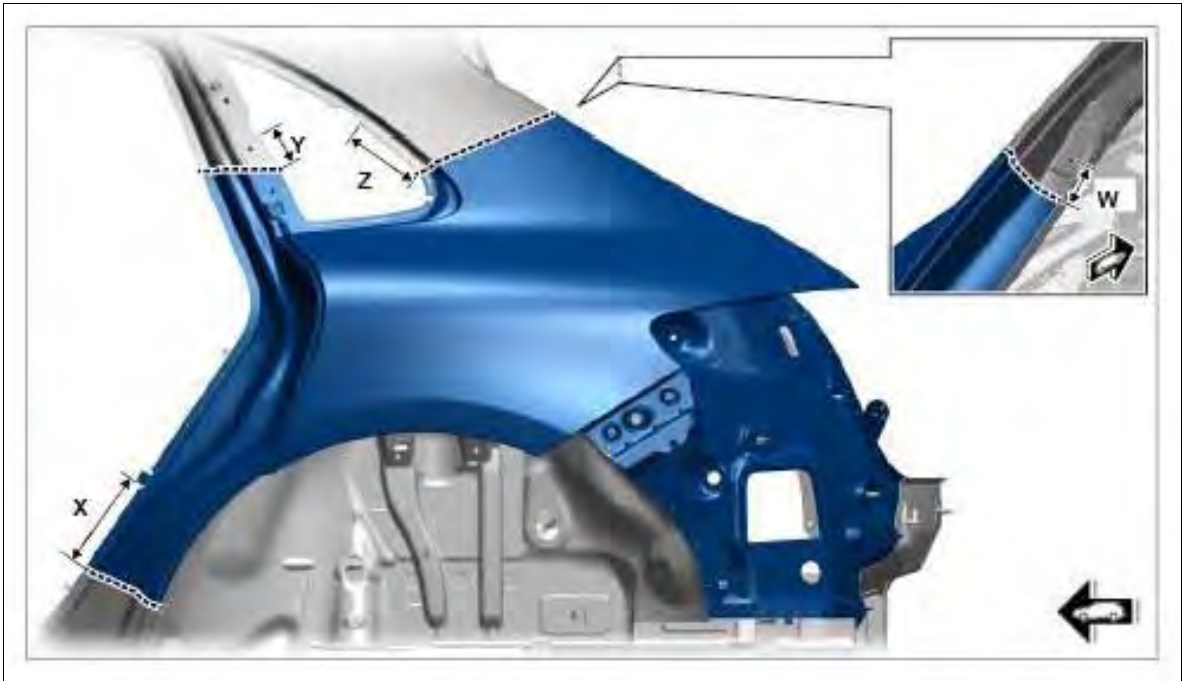
WM 507255 REPLACING LONGITUDINAL MEMBER FOR WHEEL HOUSING UPPER SECTION (ALL MODELS) > PREPARING CONNECTION AREAS OF THE BODY

1. Align the sealing surface and connections of the body.
2. De-burr connection points and prepare them for welding.

Information

1. Before final assembly, make sure you fully understand all the work steps involved and carry out a trial assembly without applying adhesive.
2. The bonding process can only be carried out reliably when a smooth and swift sequence

Fig 2: Identifying Rear Side Section Cutting Dimension



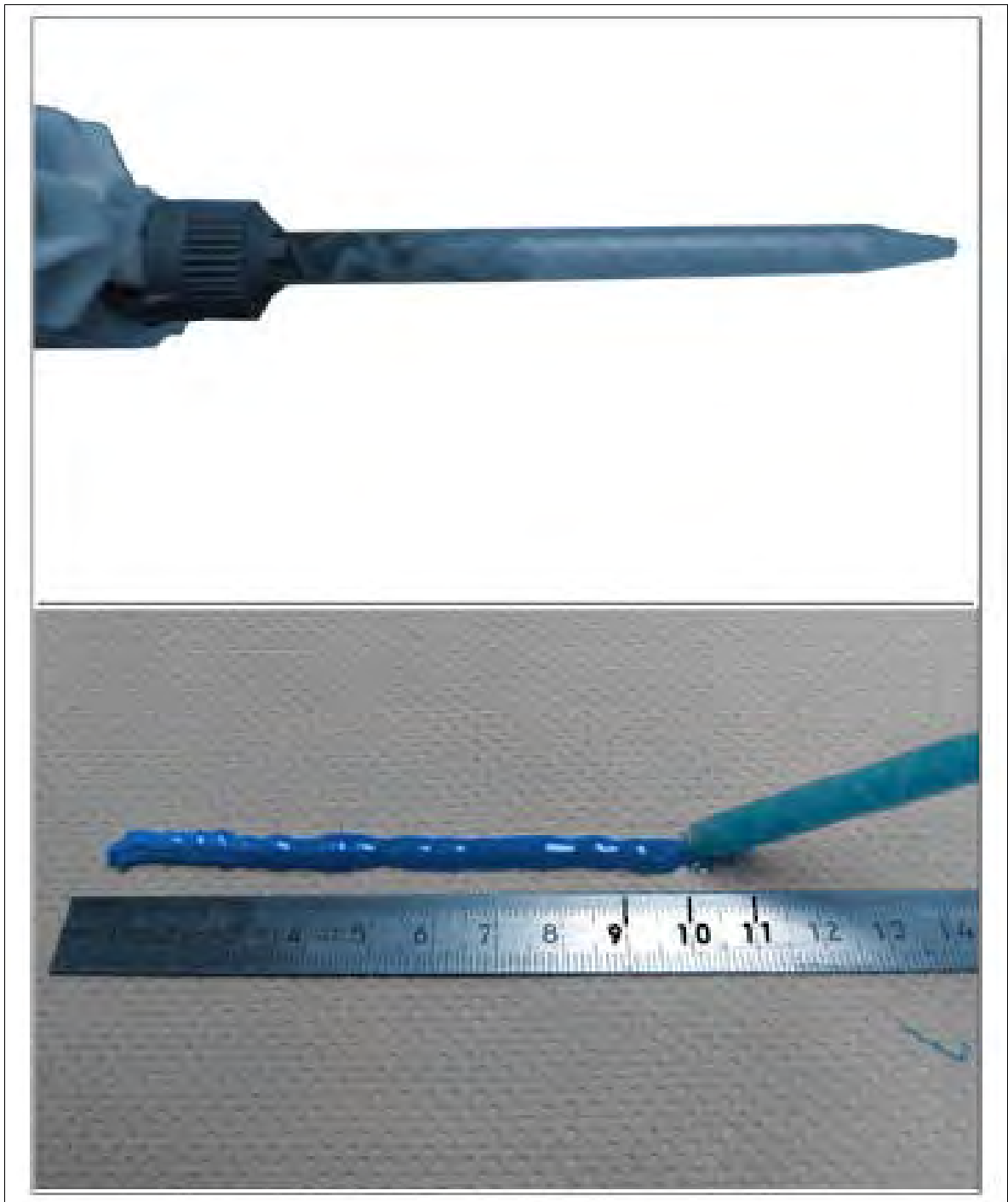
Courtesy of PORSCHE CARS NORTH AMERICA, INC.

Information

Drill out the connection point on one side only. Do not damage the plate underneath.

2. Drill out spotwelds using **spotweld drill**; .

Fig 1: Checking Emerging Adhesive



Courtesy of PORSCHE CARS NORTH AMERICA, INC.

1. 1.1. Make sure that the two-component adhesive is mixed evenly in the mixing tube.
 2. 1.2. Before applying adhesive to the joints, apply a bead of adhesive with a length of → **Length: 10 cm** to a paper towel or similar object and dispose of it later. The hardening process can also be checked using this bead.
2. Apply adhesive.
1. 2.1. Apply adhesive to the flanges of the joints.

Fig 2: Detaching Front Backrest Padding From Cover (Sport)

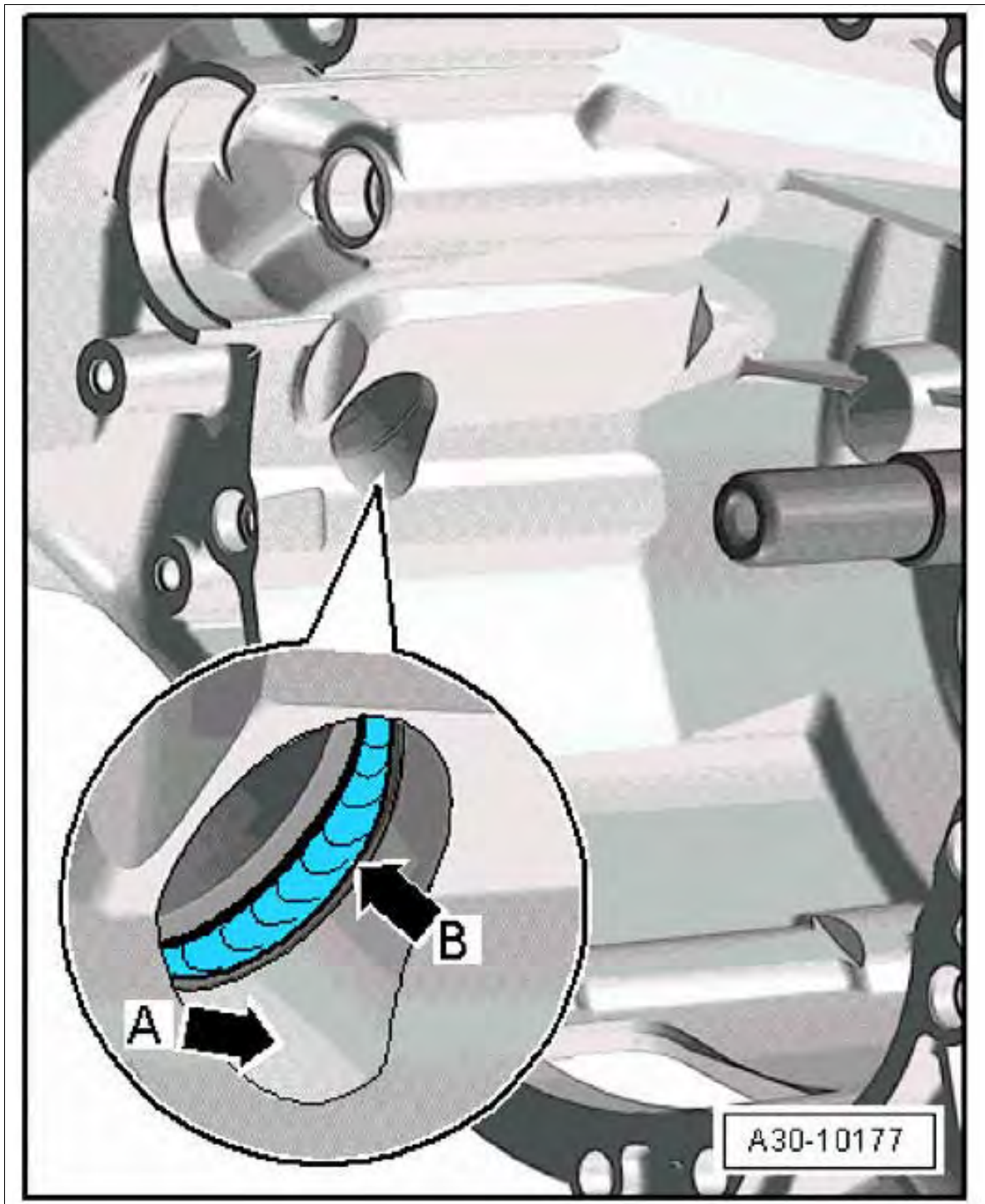


Courtesy of PORSCHE CARS NORTH AMERICA, INC.

WM 741755 REPLACING PADDING FOR FRONT BACKREST (ALL MODELS) > SECURING PADDING FOR FRONT BACKREST

1. Place cover on the padding and align contour of the padding.
2. Use **cushion clip pliers Nr.130** and new cushion clips to secure the cover on the padding in the specified sequence.

Fig 3: Locating Shaft Sealing Ring

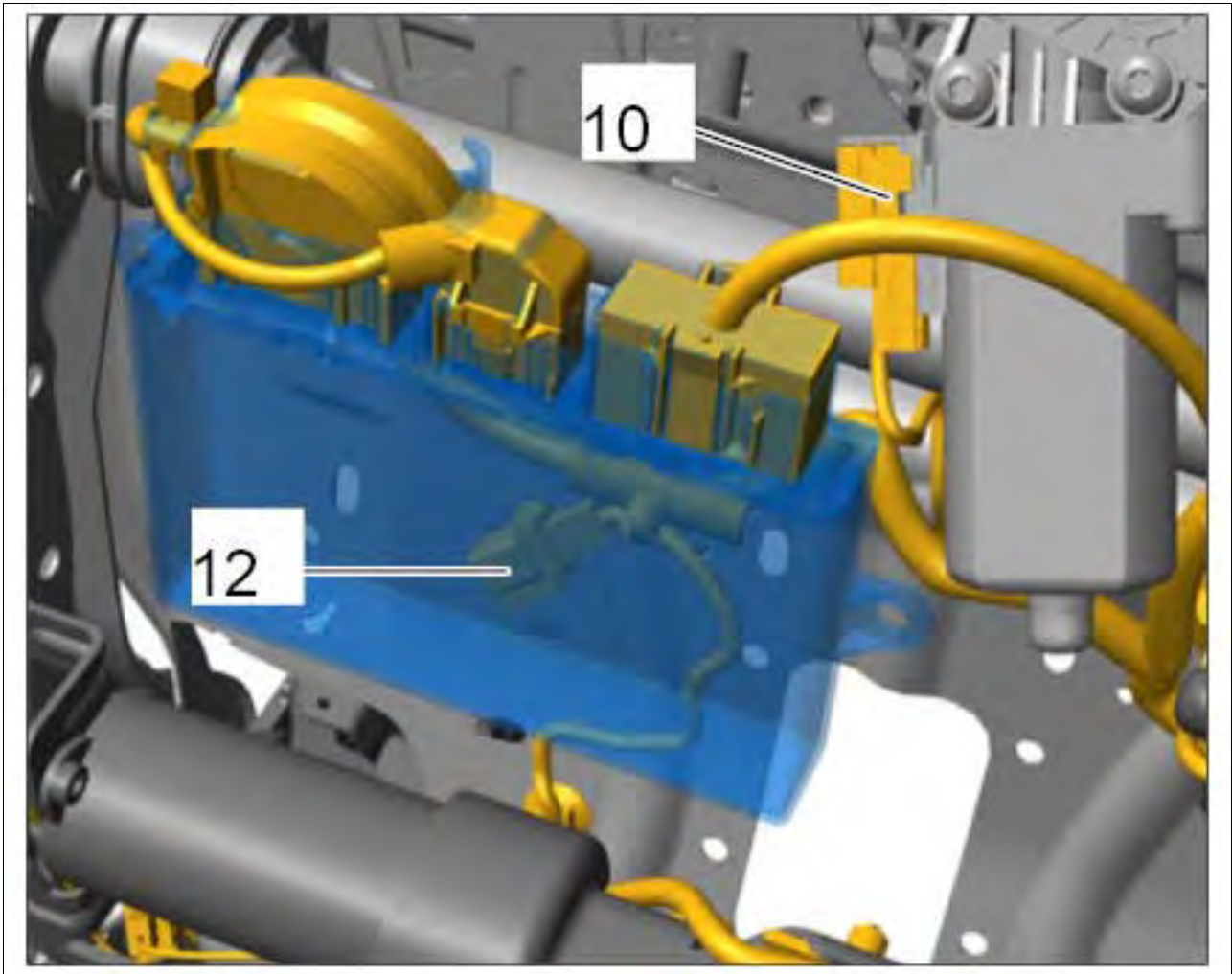


Courtesy of PORSCHE CARS NORTH AMERICA, INC.

WM 392519 REMOVING AND INSTALLING HALFSHAFT FLANGE (MACAN, MACAN S, MACAN TURBO) > REMOVING HALFSHAFT FLANGE > REMOVING RIGHT HALFSHAFT FLANGE

Information

Fig 2: Identifying Connector Under Control Unit For Memory Seat Adjustment



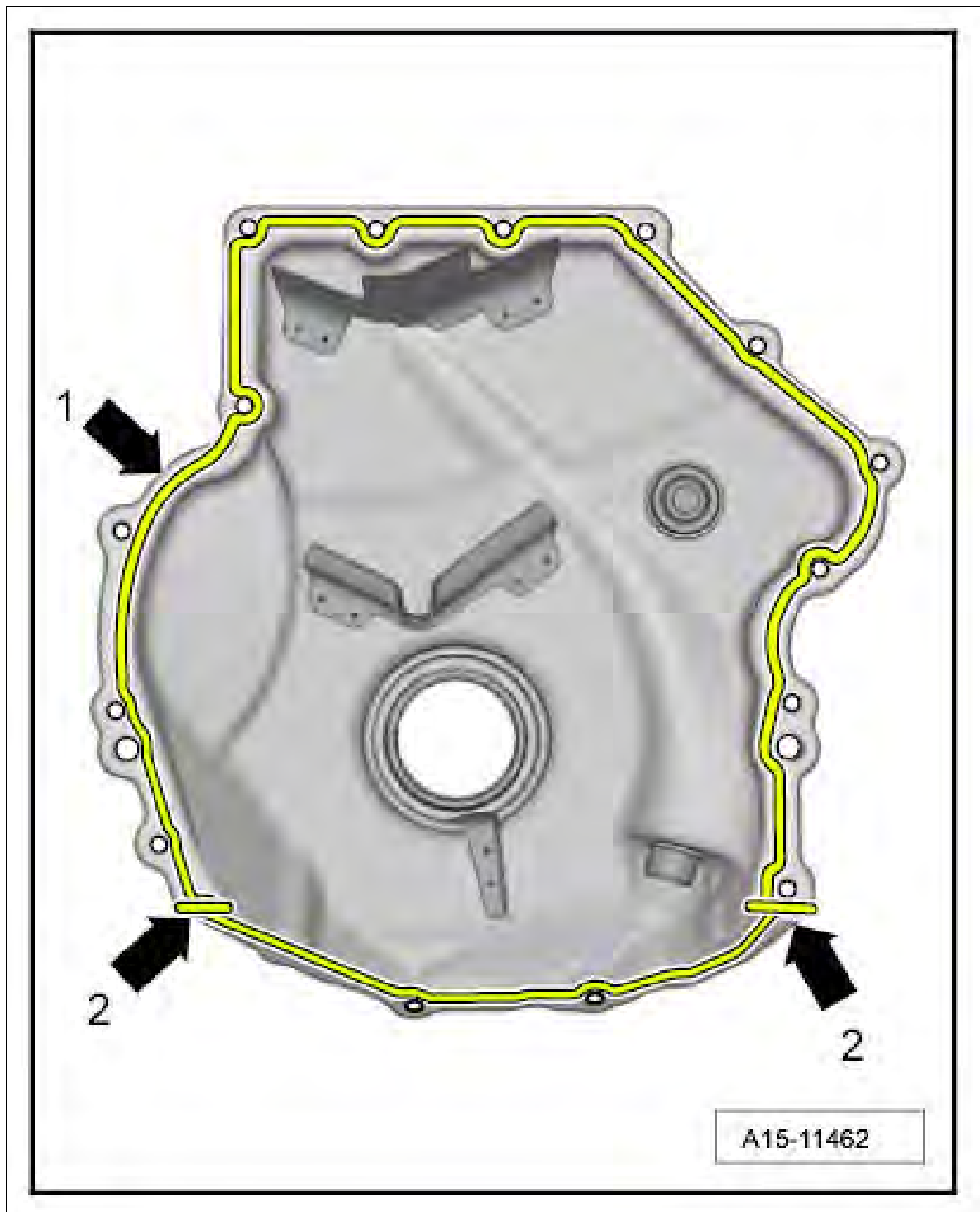
Courtesy of PORSCHE CARS NORTH AMERICA, INC.

10 - Electric plug connection for motor for seat fore-and-aft adjustment

12 - Electric plug connection for seat occupancy detection

1. First lay the wire harness loosely in the seat, ensuring that it is positioned correctly.
2. Press in fixing clips for the wire harness in areas **-1 - 5-** and **-6 + 7-** .

Fig 2: Identifying Sealant Applying Area



Courtesy of PORSCHE CARS NORTH AMERICA, INC.

6. **Install new** chain housing cover.

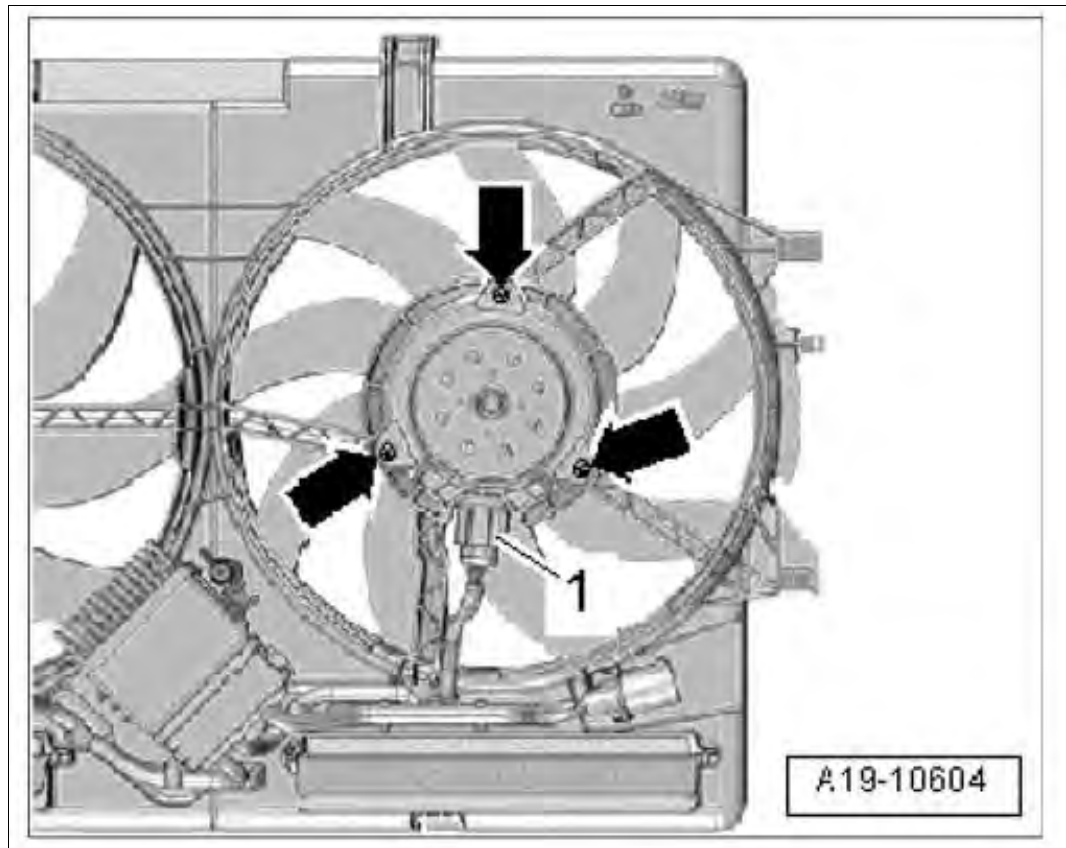
1. 6.1. Position chain housing cover and fit **new** fastening screws -1...15- .
2. 6.2. Tighten fastening screws in the sequence -1...15- .

Step 1: **Initial tightening 8 Nm (6 ftlb.)**

1. 2.1. Disconnect plug connection -1- and unscrew and remove screws -arrows- .

2. 2.2. Remove fan.

Fig 2: Locating Fan Plug Connection



Courtesy of PORSCHE CARS NORTH AMERICA, INC.

WM 190819 REMOVING AND INSTALLING ELECTRIC FAN (MACAN) > INSTALLING > INSTALLING ELECTRIC FAN

Information

If tie-wraps had to be removed in order to remove the electric fans, make sure to fit these at the same position again during installation.

1. Install fan.

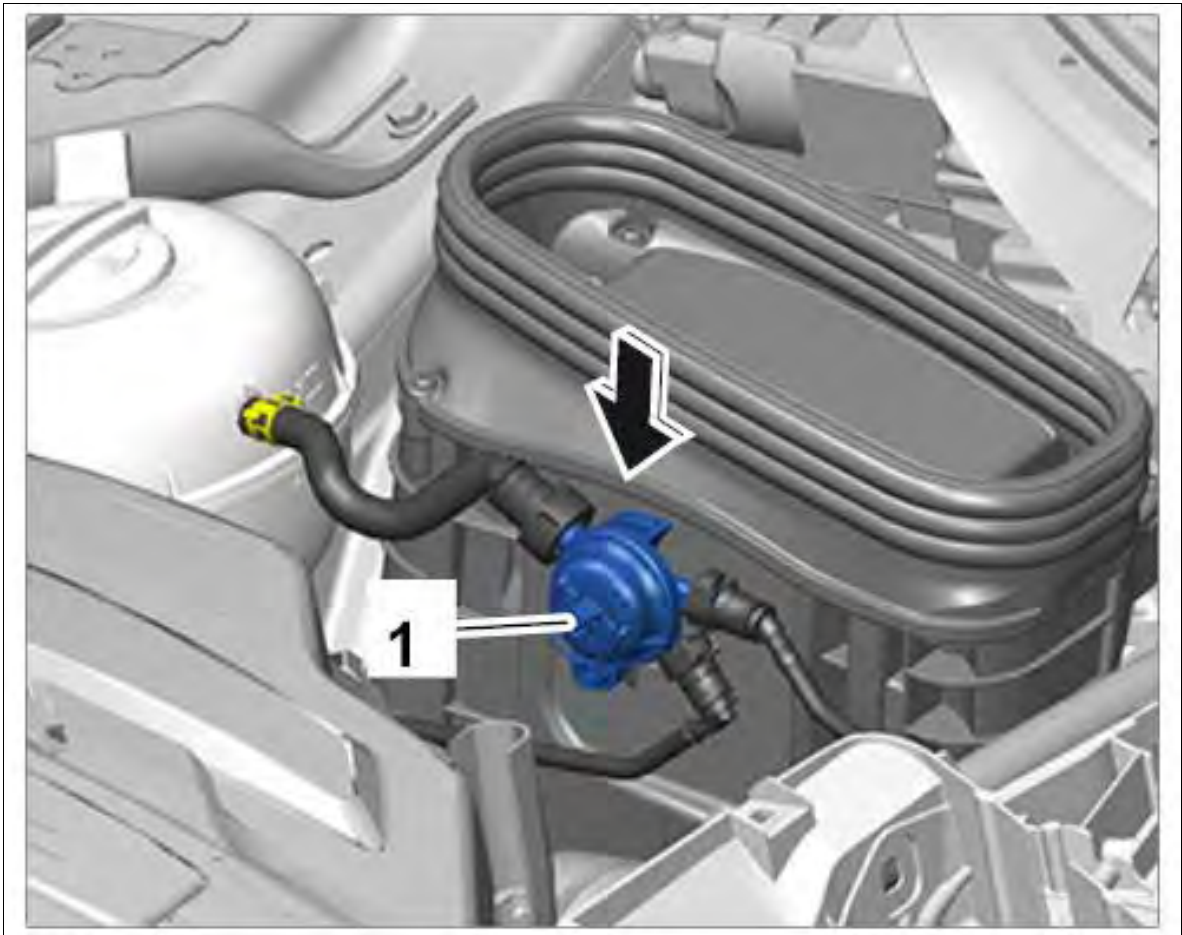
1. 1.1. Insert and secure fan.

2. 1.2. Close plug connections.

WM 190819 REMOVING AND INSTALLING ELECTRIC FAN (MACAN) > SUBSEQUENT WORK > SUBSEQUENT WORK FOR REMOVING AND INSTALLING ELECTRIC FAN

1. Install cooling fan housing. → INSTALLING COOLING FAN HOUSING .

Fig 4: Installing Change-Over Valve



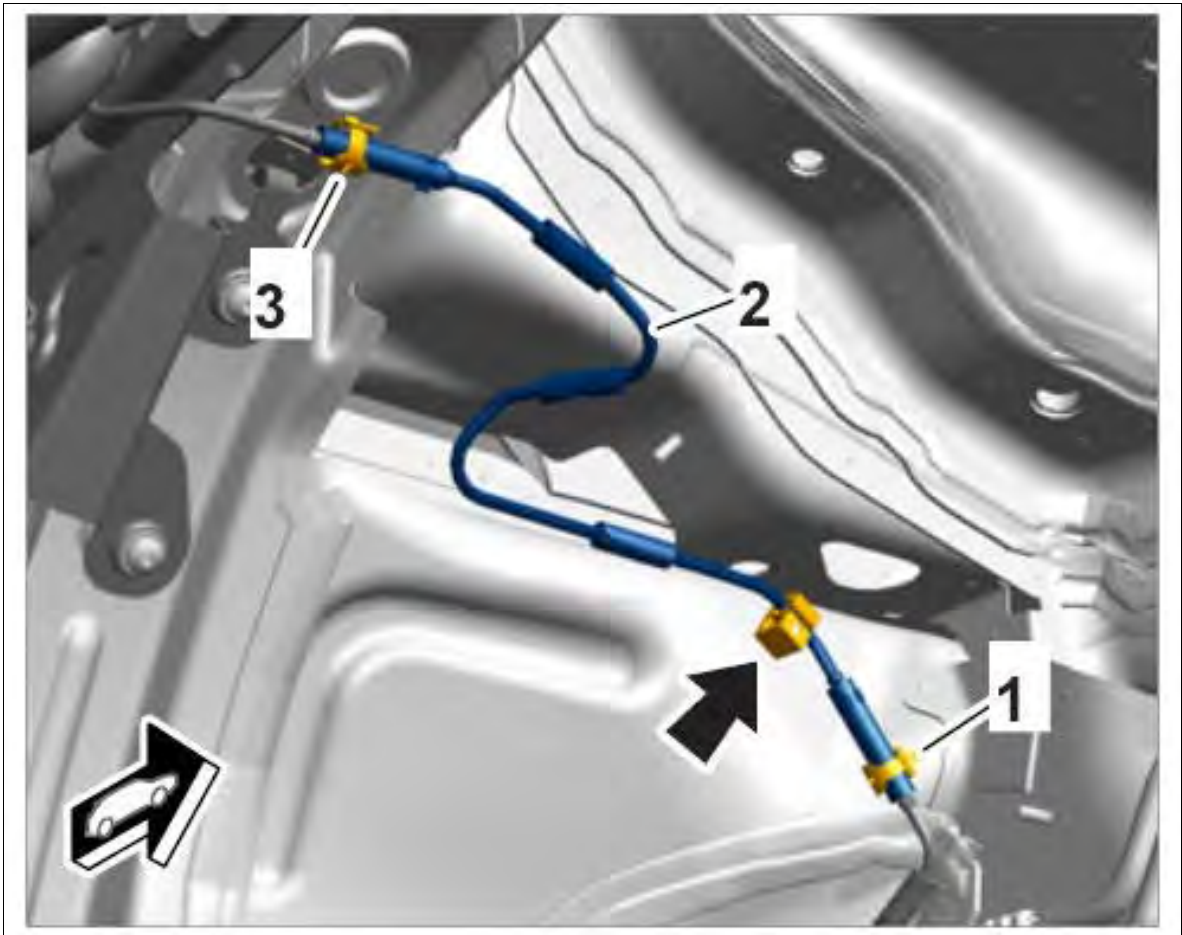
Courtesy of PORSCHE CARS NORTH AMERICA, INC.

WM 242519 REMOVING AND INSTALLING AIR CLEANER HOUSING (MACAN S, MACAN TURBO) > TECHNICAL VALUES

Location	Description	Type	Basic value	Tolerance 1	Tolerance 2
Fastening screws	Air cleaner housing cover to air cleaner housing	Tightening torque	3.5 Nm (2.5 ftlb.)		
Fastening screws	Air cleaner housing to body	Tightening torque	3.5 Nm (2.5 ftlb.)		
Fastening bolt	Fastening bolt on air guide	Torque angle	90°		

WM 242519 REMOVING AND INSTALLING AIR CLEANER HOUSING (MACAN S,

Fig 4: Locating Fuel Line In Wheel Housing



Courtesy of PORSCHE CARS NORTH AMERICA, INC.

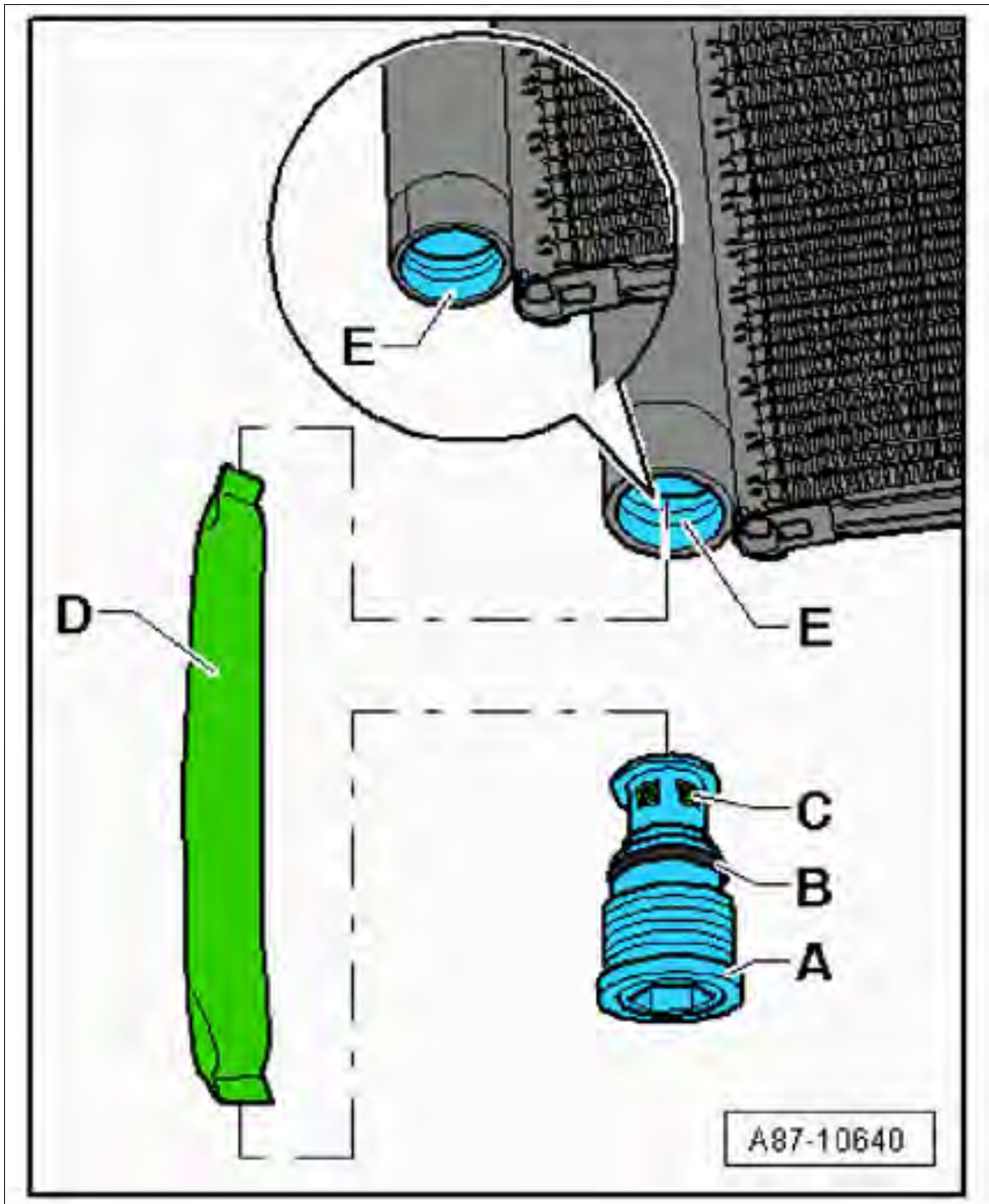
WM 822219 REMOVING AND INSTALLING HOLDER FOR HEATER (ALL MODELS) > SUBSEQUENT WORK

1. Install front wheel housing liner at the right → Installing front wheel housing liner
2. Fit right front wheel → Installing Wheel

WM 824519 REMOVING AND INSTALLING FUEL PUMP FOR AUXILIARY HEATING (ALL MODELS) > TOOLS

Designation	Type	Number	Description

Fig 1: Removing Desiccator



Courtesy of PORSCHE CARS NORTH AMERICA, INC.

Information

Do not open the stoppers for the lines and connections until shortly before installation.

3. Installation is performed in reverse order.

starting terminals.

→ Disconnect the battery and insulate the ground strap so that all contact with a ground carrier is avoided.

→ Wait 1 minute after disconnecting the battery.

→ Only pull off connector on the triggering unit after the waiting time has elapsed.

→ Make sure that no foreign objects are located in front of the airbag unit during installation.

→ Replace damaged parts during removal.

→ Always position airbag units so that the blow-out opening is facing upwards, e.g. crest on driver's airbag.

→ Do not position anything on the airbag units.

→ If removed for an extended period, the airbag units must be stored in a safe place.

→ Airbag units must not come into contact with grease, oil, detergents, liquids, or similar substances.

→ Do not expose airbag units to temperatures above 90°.

→ Do not remove the short-circuit spring on the plug-in contacts.

→ Ignition and preparations may only be carried out by skilled staff, supervised by a second responsible person.

→ Before disposal, the airbag unit must be rendered harmless by electrical ignition performed in accordance with all precautionary measures, thereby preventing it from being used incorrectly.

 **WARNING:** *Incorrect handling of safety bolts*

- *Danger of injury*
- *Loss of torque*

→ Always use new fastening screws and nuts following removal.

→ Observe specified tightening torques.

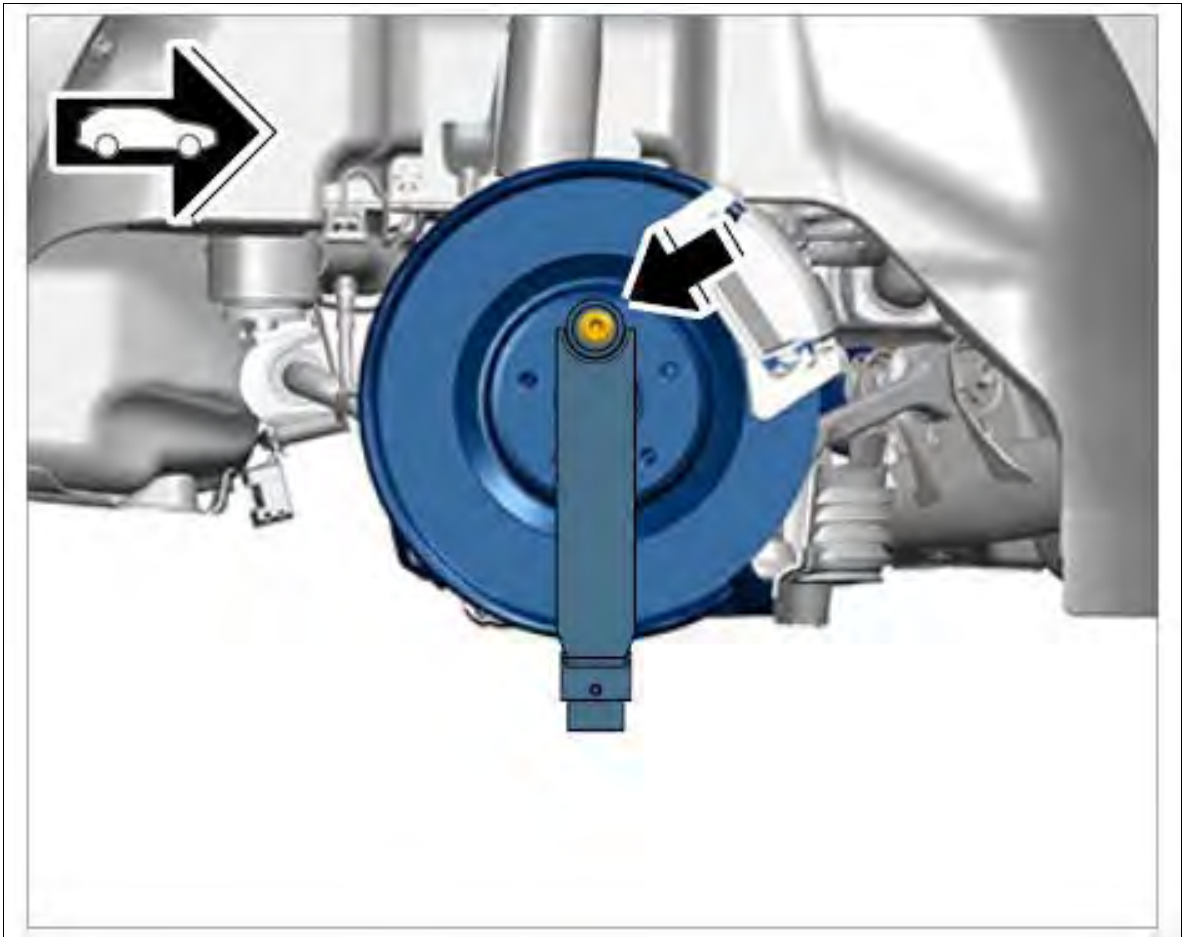
→ Carry out a visual inspection of all re-used parts.

Information

Always replace the fastening screws on the airbag unit after customer service and reworking. The micro-self-locking screws must not be treated, greased or loosened and then screwed on again.

1. Loosen fastening screws **-1-** between the knee airbag and trim panel under the dashboard.

Fig 1: Locating Support (T10149) Mounting Nut



Courtesy of PORSCHE CARS NORTH AMERICA, INC.

1. 1.1. Turn the wheel hub in such a way that a bore for a wheel bolt is at the top.
 2. 1.2. **Support T10149** must be secured to the wheel hub with a wheel bolt **-arrow-**
 3. 1.3. **Support T10149** must now be fitted into the **transmission jack WE 1082**.
 4. 1.4. Lift the wheel bearing housing.
2. Separate threaded joint **-1-** .

Information

The slots in the wheel bearing housing must not be widened using a chisel or similar tool!

3. Pull the two pins for the upper trailing arm **-2-** out of the wheel bearing housing.

Information

Do not lower the wheel bearing housing any lower than required.

4. Unscrew nuts **-3 and 6-** .
5. Pull out screws **-4 and 5-** .

Service Manual: SYSTEM WIRING DIAGRAMS
AIR CONDITIONING

Fig 1: Automatic A/C Circuit (1 of 4)

