
CONTENTS

PAGE NO.

PRELIMINARY REMARKS IV

INSTRUCTIONS V

ORDERING OF PARTS VI

ENGINE AND CHASSIS AND BODY GROUP INDEX VII - XI

ENGINE AND CHASSIS PARTS 3 - 509

PART NUMBER INDEX From 511 onwards

PRELIMINARY REMARKS

This list comprises of parts for Engine,Gear Box,Chassis,Front Axle,Rear Axle etc and Body Portion of LPK 2516C EURO-II Vehicles.

Chassis Type	Sales Designation	Wheel Base	Description	Appertaining Engine Type	VC No.
396 522	LPK 2516C	3880 MM	Full Forward Control Chassis (6X4),352 Dia Clutch, S-Cam Brake,Power Steering, 225 Lit Fuel Tank,24V with 1516 Face,Non-Sleeper Cab Version	6BTAA Tata Cummins BS-II	21711638000R 21711738000R 21712138000R 21712438000R
396 523	LPK 2516C	3880 MM	Full Forward Control Chassis (6X4),352 Dia Clutch, S-Cam Brake,Power Steering, 225 Lit Fuel Tank,24V with 1516 Face,Non-Sleeper Cab Version	6BTAA Tata Cummins BS-II	21712638000R 21713138000R 21714138000R 21714738000R 21715838000R

TABLE 03.1
CRANKSHAFT AND MAIN BEARING
GROUP 03

FIG. NO.	PART NUMBER	DESCRIPTION	QTY. FOR LPK 2516C EURO II	REMARKS
	2786 0399 01 07	Set of Main Bearing (RS III) Consisting of: (0.75 mm oversize)	1	Serviced as a Set
4		Bearing Main (Upper)	6	
6		Bearing Main (Lower)	7	
5		Bearing Crankshaft (Thrust)	1	
	2786 0399 01 08	Set of Main Bearing (RS IV) Consisting of: (1.00 mm oversize)	1	
4		Bearing Main (Upper)	6	
6		Bearing Main (Lower)	7	
5		Bearing Crankshaft (Thrust)	1	
7	2786 0399 99 07	Sleeve Wear (Front)	1	Service Part
8	2786 0399 99 08	Sleeve Wear (Rear)	1	Service Part

TABLE 05.1
CAMSHAFT AND TAPPETS
GROUP 05

FIG. NO.	PART NUMBER	DESCRIPTION	QTY. FOR LPK 2516C EURO II	REMARKS
		CAMSHAFT AND TAPPETS		
1	2786 0599 99 58	Camshaft	1	
2	2786 0599 99 09	Key Plain Woodruff	1	
3	2786 0599 99 10	Gear Camshaft	1	
4	2786 0599 99 11	Screw Hex. Head Cap M 8x1.25x22	2	
5	2786 0599 99 12	Support Camshaft	1	
6	2786 0599 99 13	Tappet Valve	12	

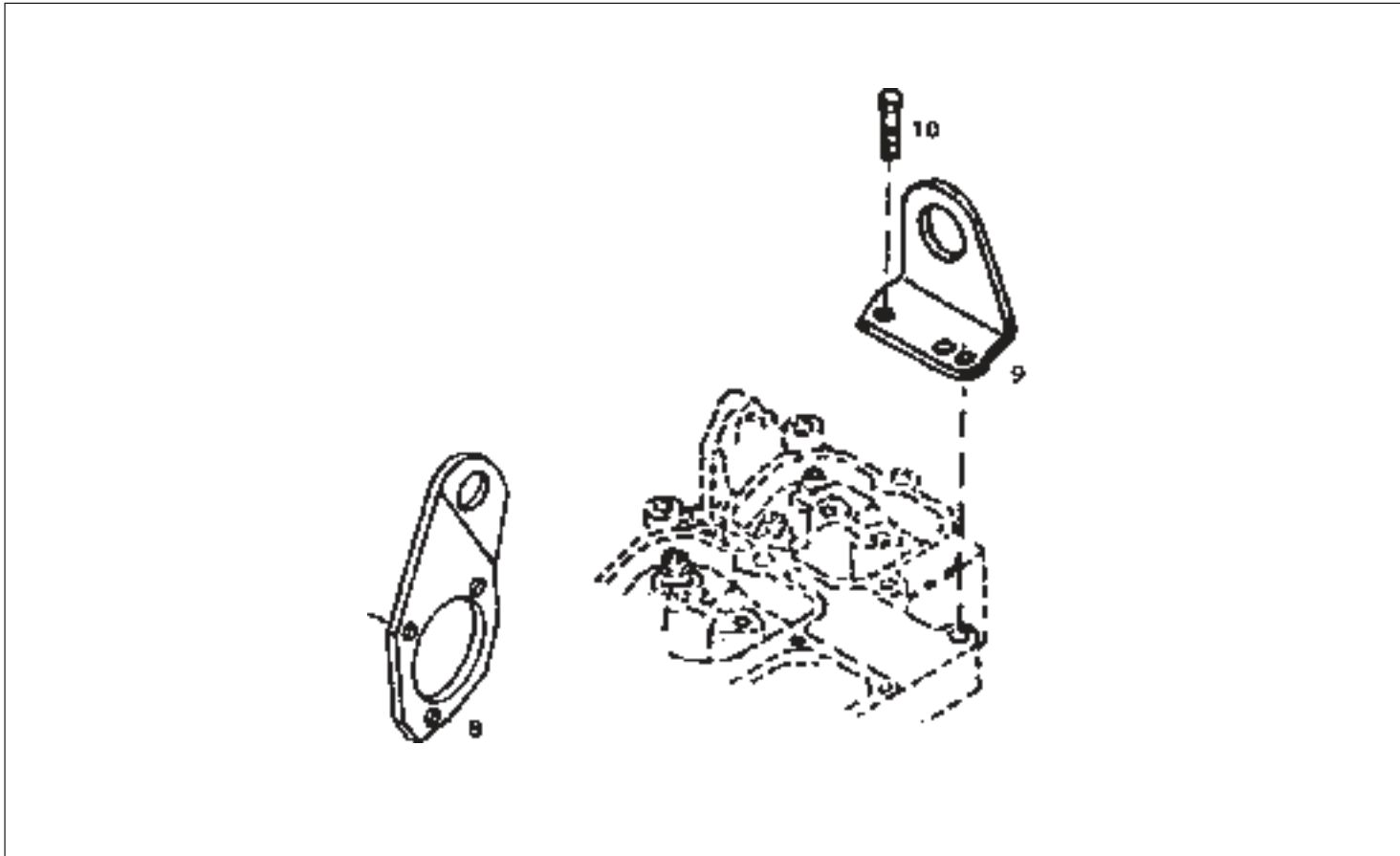


TABLE 26.6

SHIFTER SHAFT AND FORK

GROUP 26

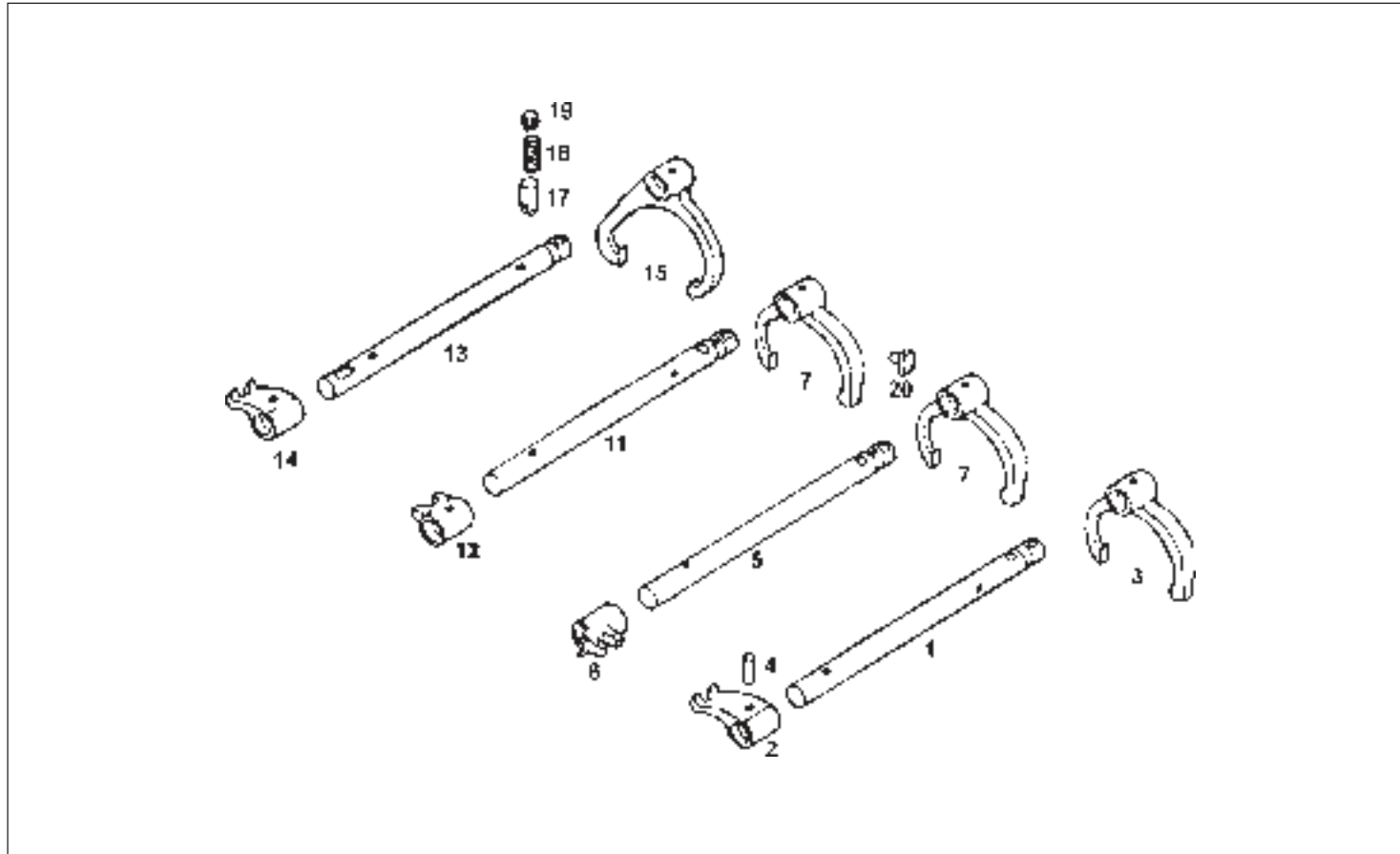


TABLE 33.1

FRONT AXLE

GROUP 33

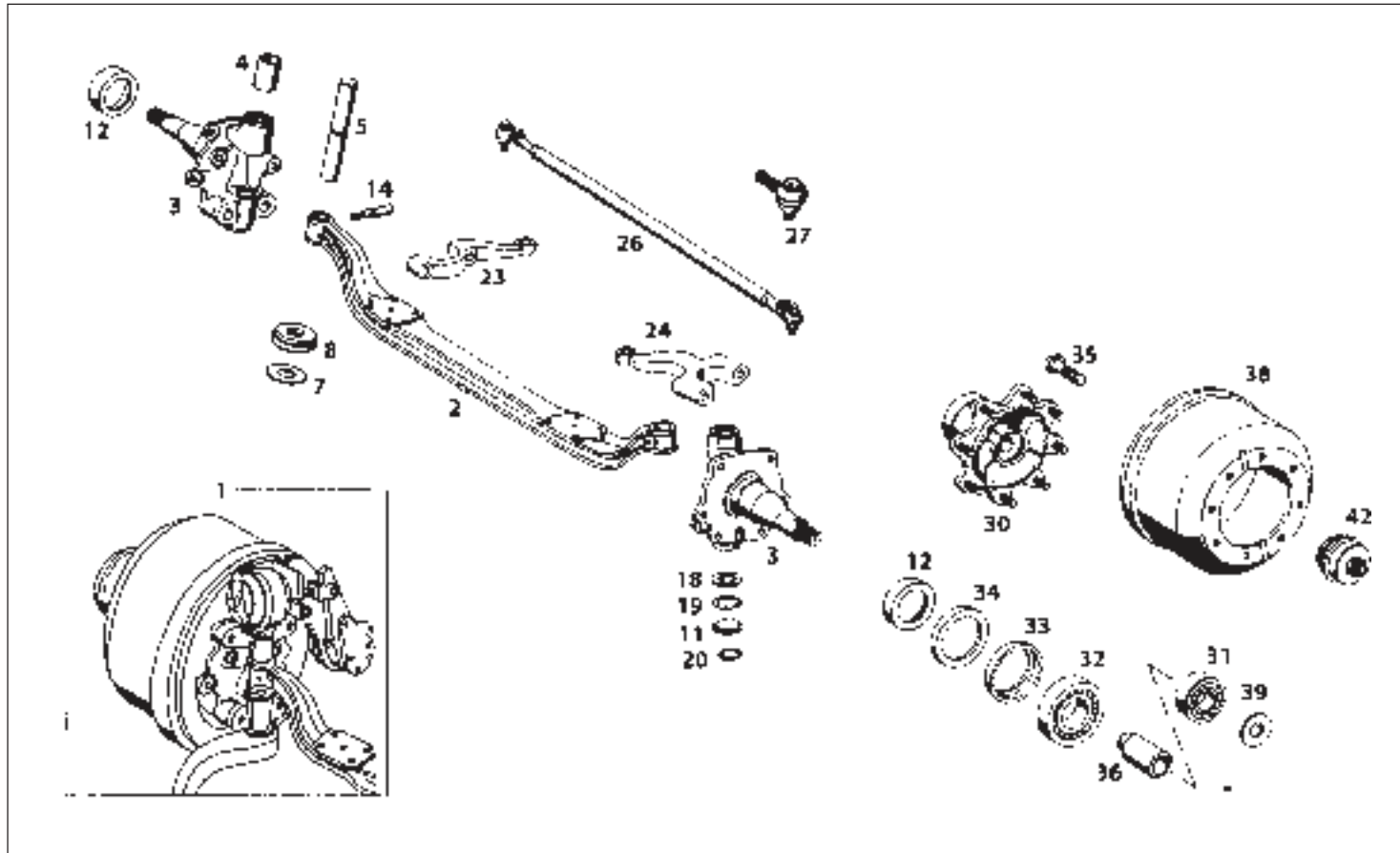


TABLE 41.1

PROPELLER SHAFT

GROUP 41

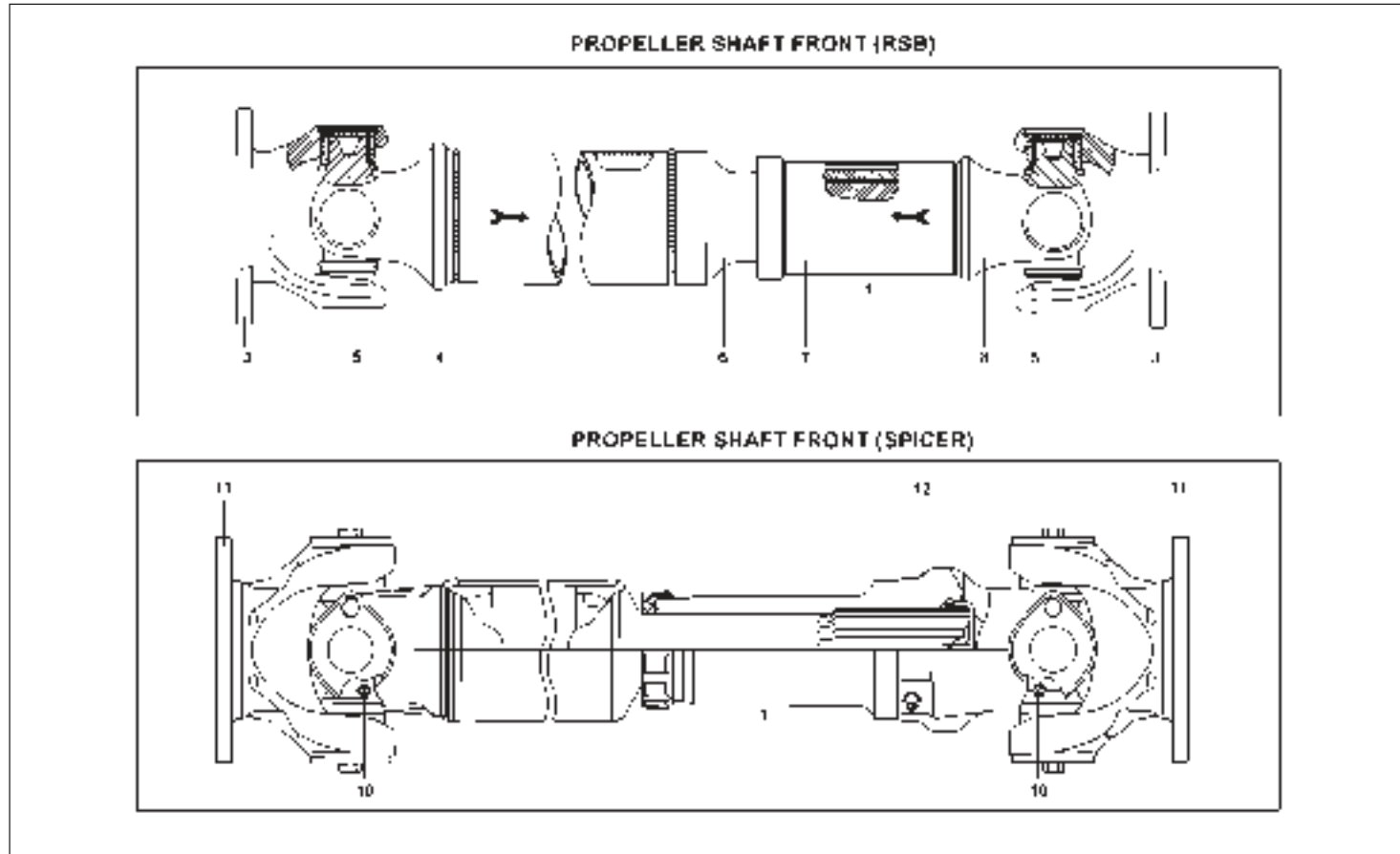


TABLE 42.11

DUAL BRAKE VALVE

GROUP 42

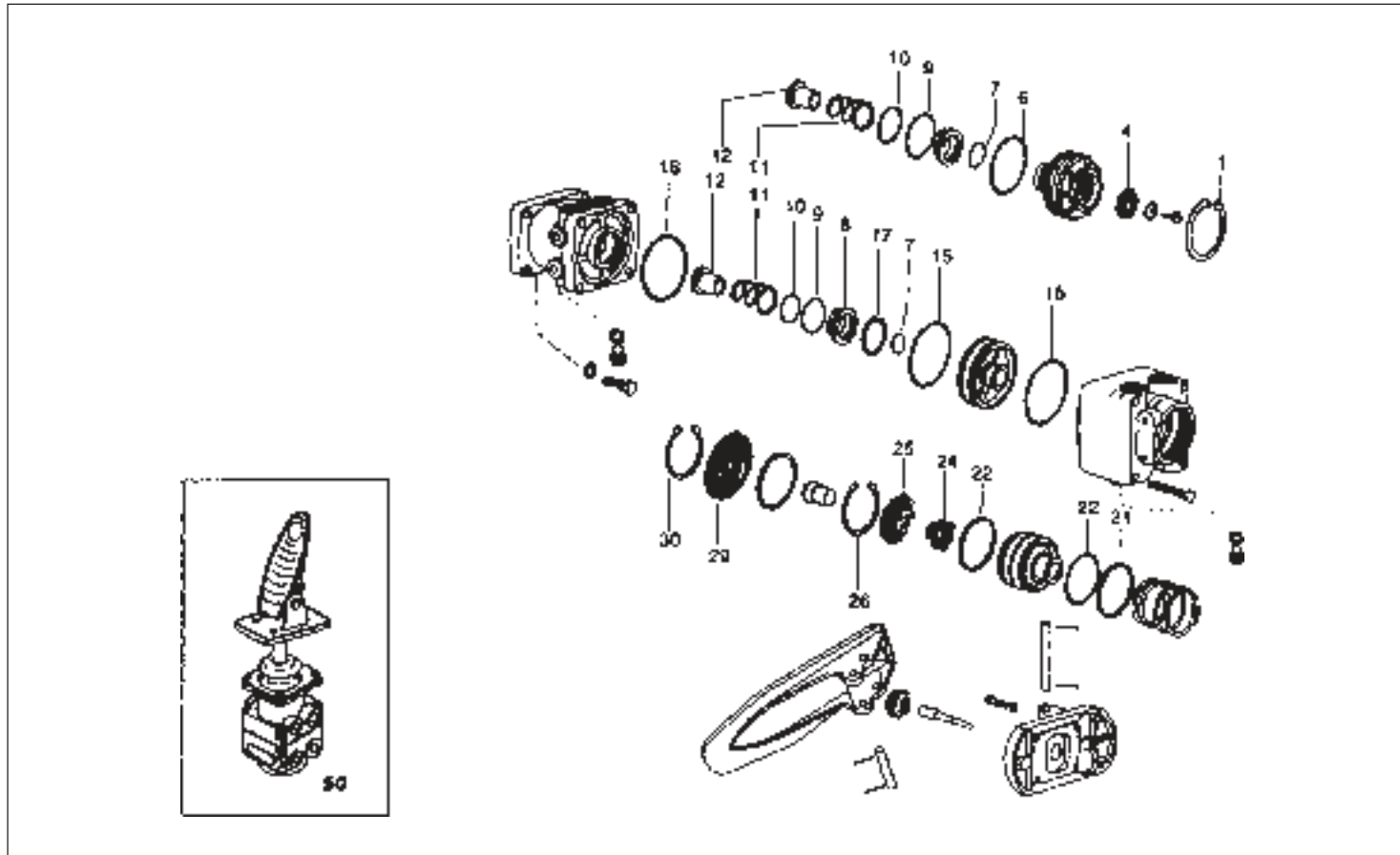


TABLE 46.5
STEERING GEAR BOX (CHINA)
GROUP 46

FIG. NO.	PART NUMBER	DESCRIPTION	QTY. FOR LPK 2516C EURO II	REMARKS
		STEERING GEAR BOX (CHINA)		
	2770 4600 01 09	Assy. Power Steering Gear Box (China)	1	
		LOOSE PARTS OF POWER STEERING G.B.		
51, 65, 68, 69	2782 4660 01 12	Housing Assembly	1	
4,5,8,9, 10,11,12, 13,14, 15, 16	2782 4660 01 13	Valve Housing Assembly	1	
70,71,72	2782 4660 01 14	Sector Shaft Cover Assembly	1	
21, 22, 23	2782 4660 01 15	Valve Sleeve Assembly	1	
24, 25, 26, 27, 28	2782 4660 01 16	Input Shaft and Torsion Bar Assembly	1	
26, 27, 28, 31	2782 4660 01 17	Worm Shaft Assembly	1	
33, 34, 35, 40, 41, 42, 43	2782 4660 01 18	Piston Assembly	1	

TABLE 54.2
INSTRUMENT CLUSTER
GROUP 54

FIG. NO.	PART NUMBER	DESCRIPTION	QTY. FOR LPK 2516C EURO II	REMARKS
		INSTRUMENT CLUSTER		Fitted in place of Instrument Panel
1	2157 5420 99 39	Instrument Cluster (1:1.04)	1	For Non-Lowered 24 Volts Vehicle
1	2157 5420 99 36	Instrument Cluster (1:1.04)	1	For Lowered 12 Volts Vehicles
2	2618 5420 99 25	Fuel Gauge 24V	1	For Non-Lowered 24 Volts Vehicle
2	2618 5420 99 26	Fuel Gauge 12V	1	For Lowered 12 Volts Vehicles
3	2618 5420 99 27	Temperature Gauge 12V & 24V	1	
	2782 5420 99 11	Temperature Gauge with Buzzer Assy. 12V & 24V	1	
4	2618 5420 99 28	Air Pressure Gauge 12V & 24V	2	
5	2618 5420 99 32	Speedometer (1:1.04) 12V & 24V	1	
6	2618 5420 99 36	RPM Meter 24V	1	For Non-Lowered 24 Volts Vehicle
6	2618 5420 99 30	RPM Meter 12V	1	For Lowered 12 Volts Vehicles
		RPM Meter with Digital Hour Meter 24V	1	Part No.will be informed later
	2157 5420 99 37	RPM Meter with Digital Hour Meter 12V	1	
18	2073 5450 01 01	Assy. Main Line Switch	1	
20	2614 5450 99 01	Starter Push Button	1	
22	2618 5454 01 01	Hazard Warning Switch 24 V	1	



TABLE 91.1

SEAT AND SEAT BELTS

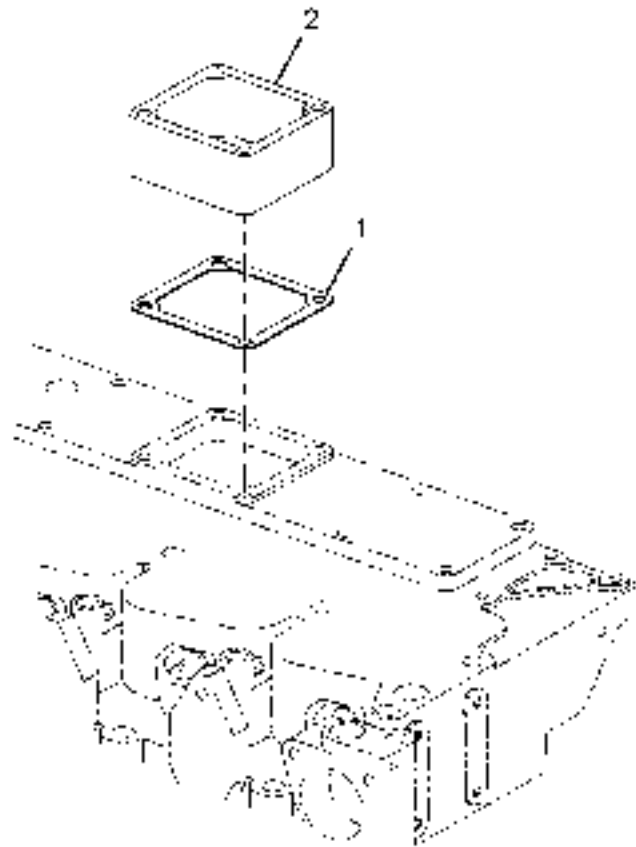
GROUP 91

FIG. NO.	PART NUMBER	DESCRIPTION	QTY. FOR LPK 2516C EURO II	REMARKS
		SEAT AND SEAT BELTS		
1	2651 9100 01 01	Assy. Driver's Seat RHD	1	For Non-Lowered & Lowered Veh.
1	2651 9100 01 31	Assy. Driver and Codriver Seat W/Head Rest	2	For 2.64 Deg.Eng.Incl.Vehicles
2	2576 9170 01 33	Assy. Seat Stand	1	
3	1132 399822 3	Hex. Screw M 8x16	4	
4	1246 050084 1	Bright Washer 8.4 St.	4	
5	2576 9400 01 14	Assy. Co-Driver Seat Complete	1	For Non-Lowered & Lowered Veh.
3	1132 399807 0	Hex. Screw M 8x20	4	
4	1265 060084 1	Washer A 8.4 St.	4	
	2754 9150 01 08	Kit Seat Belts,consisting off :	1	
6	2754 9150 01 09	Assy. Seat Belts Comp. (Driver)	1	Not Serviced Loose
7	2754 9150 01 11	Assy. Seat Belt Comp. Co-Drivers	1	Not Serviced Loose
8	2754 9150 01 13	Assy. Seat Belt Comp. Middle	1	Not Serviced Loose
6	2576 9150 01 34	Assy. Seat Belt Complete--Driver and Codriver	2	For 2.64 Deg.Eng.Incl.Vehicles
	2576 9170 01 39	Assy Bracket (Safety Belt)	2	For 2.64 Deg.Eng.Incl.Vehicles

TABLE 87.8
HARDWARE ITEMS (HOSE CONNECTION & MOUNTINGS)
GROUP 87

FIG. NO.	PART NUMBER	DESCRIPTION	QTY. FOR LPK 2516C EURO II	REMARKS
	1214 050060 5	Nyloc Nut M 6 (Cyl. Mounting)	4	
	2171 4410 65 01	Nyloc Nut M 12 x 1.25	2	
	1205 229605 4	Nut M 12	2	
	2171 4410 77 04	Dowty Seal 1/4"	1	
	2171 4410 77 05	'O' Ring 18.77 x 1.78	1	
	2171 4410 77 06	'O' Ring 23.52 x 1.78	1	
	2171 4410 90 01	'O' Ring Walve Block Mtg.	1	

CHASSIS TYPE: ALL



2076600405R.01		CAMSHAFT AND TAPPETS		GROUP 05	
CHASSIS TYPE: ALL					
FIG. NO.	PART NUMBER	DESCRIPTION	QTY	REMARKS	
1	278605999977	CAMSHAFT	1		
2	T06560000124	KEY PLAIN WOODRUFF	1		
3	278605999910	GEAR CAMSHAFT	1		
4	278605999911	SCREW HEX. HEAD CAP M 8X1.25X22	2		
5	278605999912	SUPPORT CAMSHAFT	1		
6	278605999978	TAPPET, VALVE	12		