

목 차

CONTENTS

	일 러 두 기 INTRODUCTION	
	색 인 (그림/품명/품번) INDEX (ILLUSTRATION PART NO. / PART NAME)	
A	DL06S 엔 진 ENGINE	
B	DL08S 엔 진 ENGINE	
C	DV11S 엔 진 ENGINE	

INTRODUCTION

HOW TO USE THIS CATALOG

For rapid finding of parts information, this parts catalog is provided with main group, illustrations, parts number, parts name index, utilize these fully.

- There is the actual parts include **main group** is known.
 - ⇒ Check the **group number index** to find out group number of any particular illustration.
 - ⇒ Check the parts information
- There is the actual parts **mounting position** is known.
 - ⇒ Check the **illustration index** to find out group number or pages of any particular illustration.
 - ⇒ Check the parts information.
- Parts number** is known.
 - ⇒ Check the **parts number index** to find out group number or any particular parts number.
 - ⇒ Check the parts information.
- Parts name** is known.
 - ⇒ Check the **parts name index** to find out group number of any particular parts name.
 - ⇒ Check the parts information.

CATALOG COMPOSITION

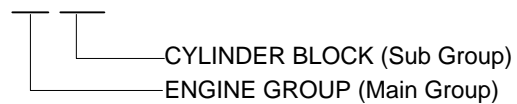
Fig. 1011 실린더 블록
CYLINDER BLOCK

[지시번호] KEY NO	품 명	PARTS NAME	Fig. 1011
①	②	⑧ ⑨	⑩
⑥	⑪	⑦	
호	품 번 (PART NO.)	비 고 (REMARKS)	AS
관	사 용 조 건	EXCLUSIVE	
성			
	[01] 블록-실린더 65.01101-6092A	X X	1
⑤	[02] 블록-실린더 65.01101-0056A	X X	1
③	[03] 캠-베어링 65.01105-6005B	X X	1
④			

① GROUP NO.

The first one digit indicates "MAIN GROUP NO." and next three digits indicates "SUB GROUP NO."

EX) 1 011



② SUB GROUP NAME

This indicates the name of sub group within the main group.

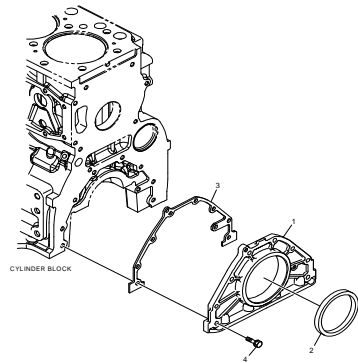
③ KEY NUMBER

Key number correspond with the reference number on the illustration.

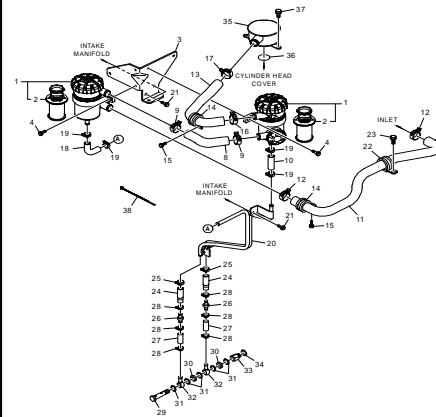
Key number are not always sequence.

A.DL06S

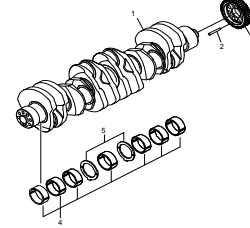
1015 오일 시일
OIL SEAL



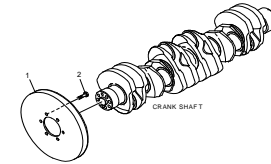
1018 브리더
BREATHER



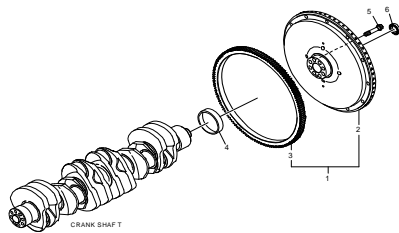
1021 크랭크 샤프트
CRANK SHAFT



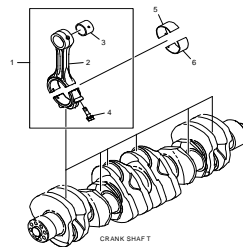
1022 바이브레이션 댐퍼
VIBRATION DAMPER



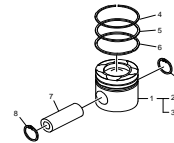
1023 플라이휠
FLYWHEEL



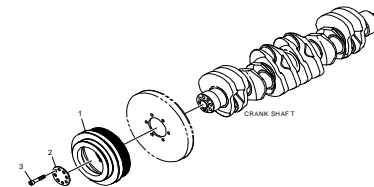
1024 커넥팅 로드
CONNECTION ROD



1025 피스톤
PISTON



1026 크랭크 샤프트 풀리
CRANK SHAFT PULLEY



B.DL08S

1014 플라이휠 하우스
FLYWHEEL HOUSING

1015 오일 시일
OIL SEAL

1016 오일 스프레이 노즐
OIL SPRAY NOZZLE

1018 브리더(I)
BREATHER(I)

1019 브리더(II)
BREATHER(II)

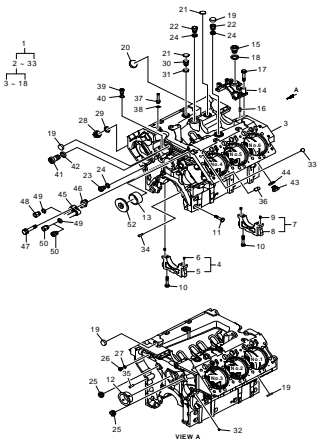
1021 크랭크 샤프트
CRANK SHAFT

1022 바이브레이션 댐퍼
VIBRATION DAMPER

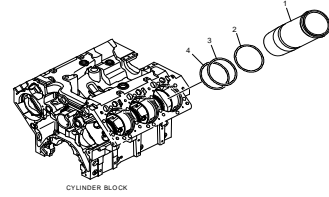
1023 플라이휠
FLYWHEEL

C.DV11S

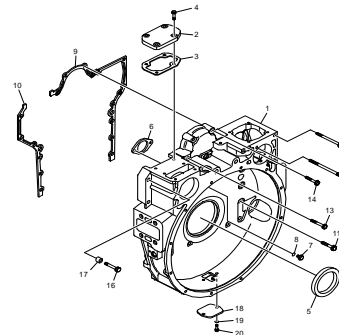
1011 실린더 블록
CYLINDER BLOCK



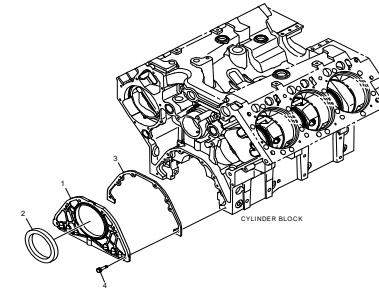
1012 실린더 라이너
CYLINDER LINER



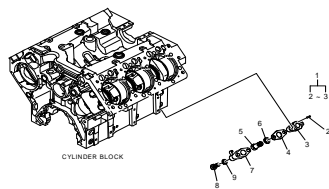
1014 플라이휠 하우징
FLYWHEEL HOUSING



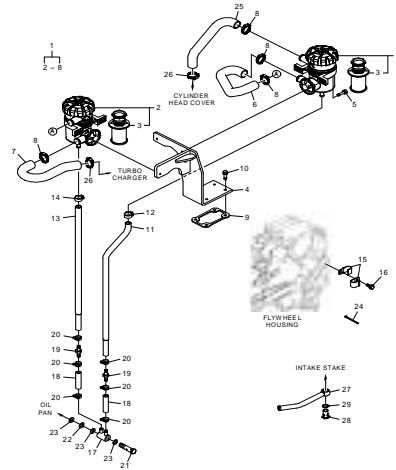
1015 오일 시일
OIL SEAL



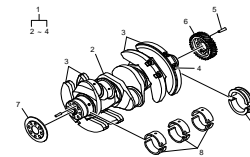
1016 오일 스프레이 노즐
OIL SPRAY NOZZLE



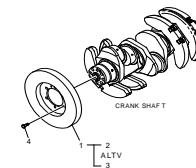
1018 브리더
BREATHER



1021 드라이브 시스템
DRIVING SYSTEM



1022 바이브레이션 댐퍼
VIBRATION DAMPER



FUEL INJECTION PIPE ASS'Y ~

품 P A R T N A M E 명	지시번호 KEY NO.	품 P A R T N A M E 명	지시번호 KEY NO.	품 P A R T N A M E 명	지시번호 KEY NO.	품 P A R T N A M E 명	지시번호 KEY NO.	품 P A R T N A M E 명	지시번호 KEY NO.
FUEL INJECTION PIPE ASS'Y	1103 05 B	GASKET	1996 20 C	GASKET-CYLINDER HEAD	1034 10 B	GASKET-INTAKE MANIFOLD	1996 70 C	GASKET-TURBO CHARGER	1091 05 B
	1103 06 B		1996 21 C		1996 19 B		1996 71 C		1996 35 B
	1103 07 B		1996 22 C		1996 20 B	GASKET-OIL COOLER	1056 04 A		1996 67 B
	1103 01 C		1996 30 C		1996 58 B		1056 23 A		1091 02 C
	1103 02 C		1996 55 C		1996 59 B		1996 14 A		1996 40 C
	1103 03 C		1996 56 C		1034 03 C		1056 09 B		1996 73 C
	1103 06 C		1996 57 C		1996 25 C		1056 10 B	GASKET-WATER PIPE	1065 15 A
	1103 07 C		1996 62 C		1996 65 C		1056 29 B		1996 21 A
FUSE	1268 04 A	GASKET-AIR HEATER	1268 02 B	GASKET-EXHAUST	1081 05 A		1996 24 B		1065 13 C
FUSE-AIR HEATER	1268 04 B		1996 33 B		1996 22 A		1056 16 C		1996 34 C
	1268 04 C	GASKET-AIR PIPE	1268 02 A		1996 42 A		1996 28 C	GASKET-WATER PUMP	1065 11 A
GASKET	1013 03 A		1996 32 A		1081 07 B	GASKET-OIL FILLER PIPE	1058 22 A		1996 20 A
	1014 03 A		1996 50 A		1996 31 B		1058 10 B		1063 02 B
	1015 03 A		1091 02 B		1996 64 B		1996 25 B		1064 05 B
	1055 17 A		1094 08 B		1081 03 C		1058 03 C		1065 05 B
	1091 14 A		1996 34 B		1091 05 C		1996 29 C		1066 12 B
	1996 03 A		1996 36 B		1996 35 C	GASKET-OIL FILTER	1056 19 A		1996 27 B
	1996 06 A		1996 68 B		1996 36 C		1058 16 A		1996 28 B
	1996 08 A		1082 08 C		1996 68 C		1996 16 A		1996 29 B
	1996 13 A		1996 41 C		1996 69 C		1056 19 B		1996 62 B
	1996 26 A		1996 74 C	GASKET-FLANGE	1091 05 A		1058 22 B		1065 10 C
	1996 46 A	GASKET-CYLINDER HEAD	1031 13 A		1091 13 A		1996 23 B		1996 33 C
	1013 04 B		1996 09 A		1996 25 A		1055 17 C	GEAR-AIR COMPRESSO	1541 50 C
	1014 02 B		1996 35 A		1996 33 A	GASKET-OIL PAN	1058 04 A		1542 50 C
	1015 03 B		1031 13 B		1996 45 A		1996 15 A	GEAR-CAM SHAFT	1045 01 A
	1091 14 B		1034 07 B		1091 13 B		1058 02 B		1045 01 B
	1996 15 B		1996 18 B		1541 24 B		1996 26 B		1045 02 B
	1996 16 B		1996 21 B		1542 24 B		1058 07 C		1044 03 C
	1996 17 B		1996 57 B		1996 48 B		1996 31 C	GEAR-CRANK SHAFT	1021 03 A
	1996 49 B		1996 60 B		1996 50 B	GASKET-PTO	1996 04 A		1021 03 B
	1996 66 B		1031 13 C		1996 73 B		1472 13 C		1021 06 C
	1996 74 B		1034 04 C		1056 04 C	GASKET-THERMOSTAT	1064 02 A	GEAR-DRIVE	1472 04 C
	1011 46 C		1034 08 C		1091 10 C		1064 05 A	GEAR-IDLE	1045 05 B
	1014 03 C		1996 23 C		1091 22 C		1996 17 A		1045 09 B
	1014 09 C		1996 24 C		1996 53 C		1996 18 A		1113 02 B
	1014 10 C		1996 26 C		1996 54 C		1996 39 A		1471 02 B
	1015 03 C		1996 63 C		1996 82 C		1996 40 A		1541 06 B
	1016 04 C		1996 64 C		1996 83 C		1064 03 B		1542 06 B
	1018 09 C		1996 66 C	GASKET-INTAKE MANIFOLD	1082 02 A		1065 03 B		1542 54 C
	1054 08 C	GASKET-CYLINDER HEAD	1034 03 A		1996 23 A		1996 30 B	GEAR-INJECTION PUMP	1045 07 A
	1058 23 C		1034 04 A		1996 43 A		1996 63 B		1113 01 A
	1541 27 C		1034 06 A		1082 04 B		1064 03 C		1113 01 B
	1541 37 C		1996 10 A		1083 04 B		1064 08 C		1044 06 C
	1541 49 C		1996 11 A		1996 32 B		1922 04 C		1113 01 C
	1542 27 C		1996 12 A		1996 65 B		1996 32 C	GEAR-OIL PUMP	1051 03 A
	1542 37 C		1996 36 A		1082 03 C	GASKET-TURBO CHARGER	1091 02 A		1051 04 A
	1542 49 C		1996 37 A		1268 02 C		1091 17 A		1051 07 B
	1996 18 C		1996 38 A		1996 37 C		1996 24 A		1051 08 B
	1996 19 C		1034 06 B		1996 39 C		1996 44 A		1051 03 C

SENSOR-COMMON RAIL PRESSURE ~

품 P A R T N A M E 명	지시번호 KEY NO.	품 P A R T N A M E 명	지시번호 KEY NO.	품 P A R T N A M E 명	지시번호 KEY NO.	품 P A R T N A M E 명	지시번호 KEY NO.	품 P A R T N A M E 명	지시번호 KEY NO.
SENSOR-COMMON RAIL	1103 21 B	SPACER	1542 73 C	SPRING-VALVE	1041 04 B	TURBO CHARGER ASS'Y	1091 01 C	WASHER-PLAIN	1191 15 C
	1103 24 C		1561 10 C		1041 05 B	UNION-BANJO	1064 17 A	WASHER-PLAIN 10.5	1055 13 A
SENSOR-EXHAUST GAS	1151 02 A	SPACER-INJECTION PUMP	1274 03 A		1041 04 C		1063 17 B		1082 21 B
	1151 03 B		1274 04 A		1041 05 C	UREA DOSING HEXA FILE	1154 02 B		1083 21 B
	1152 03 B		1274 05 A		1041 06 C		1154 02 B		1541 14 B
	1151 05 C		1274 06 A	STAKE-INTAKE	1082 08 B		1154 02 C		1542 14 B
SENSOR-OIL	1274 19 B		1274 07 A		1083 08 B	UREA SUPPLY MODULE	1154 01 B		1055 20 C
	1274 19 C		1274 08 A	STARTER	1262 01 A		1154 01 C		1056 24 C
SENSOR-TEMP	1274 17 A		1274 09 A		1262 01 B	V-BELT	1191 28 A		1082 18 C
	1274 37 B		1274 02 B		1262 01 C		1958 03 B		1082 18 C
	1274 26 C		1274 03 B	STRAINER	1058 14 B		1065 26 C		1111 07 C
SENSOR-UREA	1152 04 B		1274 04 B		1058 14 C	VALVE	1041 01 A	WASHER-PLAIN 12	1014 07 A
SENSOR-WATER	1274 12 A		1274 05 B	SUPPORT-ALTERNATOR	1191 14 A		1041 02 A		1191 07 B
	1274 29 B		1274 06 B		1191 13 B		1055 04 A	WASHER-PLAIN 17	1191 33 C
	1274 32 B		1274 07 B		1191 18 C		1041 01 B		1191 48 C
	1274 21 C		1274 08 B		1191 20 C		1041 02 B	WASHER-PLAIN 8.4	1056 26 B
	1274 24 C		1274 10 B	SWITCH	1262 03 A		1041 01 C		1058 18 B
SEPERATOR-WATER	1125 10 A		1274 11 B	TAPPET-VALVE	1043 01 A		1041 02 C		1064 09 B
SERVICE KIT-UREA FILTER	1154 04 B		1274 12 B		1043 01 B	VALVE SPRING ASS'Y	1041 03 B		1065 09 B
	1154 04 C		1274 13 B		1043 01 C		1041 03 C		1082 12 B
SHAFT-CAM	1044 01 A		1274 14 B	THERMOSTAT	1064 01 B	VALVE-CHECK	1018 26 A		1083 12 B
	1044 01 B		1274 15 B		1065 01 B		1014 16 B		1014 19 C
	1044 02 C		1274 16 B		1064 01 C		1018 30 B		1055 16 C
SHAFT-CRANK	1021 01 A		1274 02 C		1064 01 C		1018 19 C		1056 07 C
	1021 01 B		1274 03 C		1922 02 C	VALVE-PRESSURE LIMITING	1103 19 A		1058 19 C
	1021 02 C		1274 04 C	THERMOSTAT ASS'Y	1064 04 A		1103 22 B		1064 11 C
	1541 07 C		1274 05 C	THRUST-BEARING SET	1021 09 C		1103 21 C		1541 52 C
	1542 07 C		1274 06 C	TIA-CABLE	1019 24 B	WASHER	1026 02 A		1542 52 C
SOLENOID ASS'Y	1561 02 C		1274 07 C		1018 24 C		1041 05 A		1922 07 C
	1561 05 C		1274 08 C	TOP OVERHAUL GASKET KIT	1996 34 A		1042 09 A	WASHER-PLAIN 10.5	1125 14 A
SPACER	1018 30 A		1274 11 C	TUBE	1123 30 A		1018 35 B	WASHER-SPRING	1016 09 C
	1081 07 A		1274 12 C		1123 32 A		1023 05 B		1065 22 C
	1191 18 A		1274 13 C		1123 24 B		1041 07 B		1541 36 C
	1018 38 B		1274 14 C		1123 24 B		1042 12 B		1542 36 C
	1019 04 B		1274 15 C		1123 31 B		1056 05 B	WASHER-SPRING A10	1055 12 A
	1081 06 B		1274 16 C		1123 31 B		1041 08 C		1111 08 A
	1091 18 B		1274 17 C		1123 35 B		1042 11 C		1082 20 B
	1191 20 B	SPRING	1055 05 A		1123 25 C		1111 13 C		1083 20 B
	1274 17 B		1056 16 B		1123 28 C		1191 54 C		1541 13 B
	1561 03 B		1054 04 C		1123 31 C	WASHER 8.4	1056 28 A		1542 13 B
	1958 01 B	SPRING FLAT-JAKE BRAKE	1561 03 C		1123 34 C		1058 14 A		1055 19 C
	1014 17 C		1561 06 C	TUBE-GUIDE	1058 07 A		1291 06 A		1056 23 C
	1018 22 C	SPRING-COMPRESSION	1051 05 B		1058 11 B		1291 13 A		1082 19 C
	1103 25 C	SPRING-COMPRESSOR	1042 08 A		1058 11 C	WASHER-LOCK	1472 06 C		1082 19 C
	1191 26 C		1042 11 B	TUBE-INJECTION NOZZLE	1031 08 A	WASHER-PLAIN	1191 10 A		1082 21 C
	1191 29 C		1056 04 B		1031 07 B		1191 21 A		1111 06 C
	1191 41 C		1042 10 C		1031 08 C		1191 25 A		1250 11 C
	1191 44 C		1055 10 C	TURBO CHARGER ASS'Y	1091 01 A		1191 11 B		1262 04 C
	1541 73 C	SPRING-VALVE	1041 03 A		1091 01 B		1191 22 B		1541 14 C

Fig. 1011 실린더 블록 CYLINDER BLOCK	SUFFIX	A : EQTBA B : EQTBB	[지시번호] KEY NO	품 명		PART NAME		비 고 REMARKS	AS
				SUFFIX		좌우 수량	EXCLUSIVE		
				A	B				
			[01] 블록-실린더 65.01101-6092A	X X	1	BLOCK-CYLINDER			
			[02] 블록-실린더 65.01101-0056A	X X	1	BLOCK-CYLINDER	D		
			[03] 캡-베어링 65.01105-6005B	X X	1	CAP-BEARING	B		
			[04] 캡-베어링 65.01105-1051B	X X	1	CAP-BEARING	B		
			[05] 링-스토퍼 65.91710-0001	X X	2	RING-STOPPER			
			[06] 캡-베어링 65.01105-6006B	X X	6	CAP-BEARING	B		
			[07] 캡-베어링 65.01105-1052B	X X	1	CAP-BEARING	B		
			[08] 링-스토퍼 65.91710-0001	X X	2	RING-STOPPER			
			[09] 육각 볼트-칼러드 65.90020-0066A	X X	14	BOLT-COLLARED HEX.			
			[10] 부쉬-캠 샤프트 65.04410-0021A	X X	6	BUSH-CAM SHAFT	B		
			[11] 부쉬-캠 샤프트 65.04410-0022	X X	1	BUSH-CAM SHAFT	B		
			[12] 플러그-코어 65.90302-0009	X X	2	PLUG-CORE			
			[13] 플러그-코어 65.90302-0042	X X	8	PLUG-CORE			
			[14] 플러그-코어 65.90302-0034	X X	5	PLUG-CORE			
			[15] 플러그-코어 65.90302-0041	X X	1	PLUG-CORE			

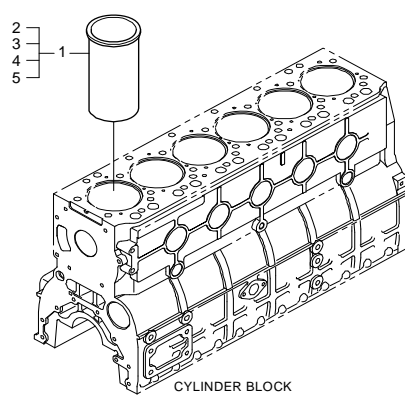
Fig. 1012 실린더 라이너 CYLINDER LINER	SUFFIX	A : EQTBA B : EQTBB	호환성	[지시번호] KEY NO	품명		PART NAME		Fig. 1012		
				품번 PART NO.	SUFFIX				수량	비고 REMARKS	AS
					A	B					
				[01] 라이너-실린더 65.01201-0075A	X	X		6	LINER-CYLINDER		
				[02] 라이너-실린더 65.01201-0076	X	X		1	LINER-CYLINDER	G	
				[03] 라이너-실린더 65.01201-0077	X	X		1	LINER-CYLINDER	G	
				[04] 라이너-실린더 65.01201-0078	X	X		1	LINER-CYLINDER	G	
				[05] 라이너-실린더 65.01201-0079	X	X		1	LINER-CYLINDER	G	

Fig. 1018 브리더 BREATHER	SUFFIX	A : EQTBA B : EQTBB	[지시번호] KEY NO	품 명		PART NAME		Fig. 1018
				SUFFIX		좌우	수량	
호환성			품 번 PART NO.	A	B	사용조건 EXCLUSIVE		REMARKS
				[34] 링-시일 06.56190-0706	X	X	1	RING-SEAL A14x20
			[35] 하우징-브리더 65.01801-5043A	X	X	1	HOUSING-BREATHER	
			[36] 오링 65.96501-0033B	X	X	1	O-RING	
			[37] 볼트 어셈블리 06.01923-3111	X	X	3	BOLT ASS'Y M8x16	
			[38] 밴드-텐션 65.97460-0008	X	X	1	BAND-TENSION	

Fig. 1024 컨넥팅 로드 CONNECTION ROD	SUFFIX	A : EQTBA B : EQTBB	호환성	[지시번호] KEY NO	품 명										PART NAME		Fig. 1024			
				품 번 PART NO.	SUFFIX										좌우	수량	비 고 REMARKS	AS		
					A	B														
<p>CRANK SHAF T</p>			[01]																	
			로드-컨넥팅 65.02401-6035	X	X												6	ROD-CONNECTING		
			[02]																	
			로드-컨넥팅 65.02401-0019B	X	X												1	ROD-CONNECTING	D	
			[03]																	
			부쉬-컨넥팅 로드 65.02405-0013	X	X												1	BUSH-CONNECTING ROD	B	
[04]																				
볼트-컨넥팅 로드 65.02411-0009	X	X												2	BOLT-CONNECTING ROD					
[05]																				
베어링-컨넥팅 로드 65.02410-0040	X	X												6	BEARING-CONNECTING ROD					
[06]																				
베어링-컨넥팅 로드 65.02410-0050	X	X												6	BEARING-CONNECTING ROD					

Fig. 1044 캠 샤프트 CAM SHAFT	SUFFIX	A : EQTBA B : EQTBB	[지시번호] KEY NO		품 명		PART NAME		Fig. 1044							
			호환성	품 번 PART NO.	SUFFIX						수량	비 고 REMARKS	AS			
					A	B										사용조건
			[01] 샤프트-캠 65.04401-0046	X	X						1	SHAFT-CAM				
			[02] 핀-다우얼 06.22022-1016	X	X								1	PIN-DOWEL 8M6X36		
			[03] 와셔-스러스트 65.90720-0032	X	X									1	WASHER-THRUST	
			[04] 볼트 어셈블리 06.01913-2911	X	X									2	BOLT ASS'Y M6x16	

Fig. 1056 오일 쿨러 OIL COOLER	SUFFIX	A : EQTBA B : EQTBB	[지시번호] KEY NO		품 명		PART NAME		Fig. 1056		
			호환성	품 번 PART NO.	SUFFIX				수량	비 고 REMARKS	AS
					A	B					
			[27] 볼트-스터드 65.90201-0135	X	X				3	BOLT-STUD	
			[28] 와셔 06.15010-2311	X	X					14	WASHER 8.4
			[29] 스프링 와셔 06.16731-2107	X	X					5	WASHER-SPRING A8
			[30] 육각 볼트 06.01013-9127	X	X					2	BOLT-HEX. M8x120
			[31] 볼트 어셈블리 06.01913-3129	X	X					1	BOLT ASS'Y M8x90

Fig. 1091 터보 차저 TURBO CHARGER	SUFFIX	A : EQTBA B : EQTBB	[지시번호] KEY NO		품 명		PART NAME		Fig. 1091				
			호환성	품 번 PART NO.	SUFFIX				수량	비 고 REMARKS	AS		
					A	B							
			[16] 볼트-스터드 65.90201-0096	X	X					6	BOLT-STUD		
			[17] 가asket-터보 차저 65.09901-0035	X	X							1	GASKET-TURBO CHARGER
			[18] 조인트 엘보우-배기 매니폴 65.08112-0057	X	X							1	JOINT ELBOW-EXHAUST MANIFOLD
			[19] 스프링 와셔 06.16731-2107	X	X							6	WASHER-SPRING A8
			[20] 육각 너트 06.11063-8214	X	X							6	NUT-HEX. M8