

**INDEX OF GROUPS, SUBGROUPS, ASSEMBLY UNITS AND PARTS OF THE CATALOGUE**

<b>Group</b>	<b>Subgroup</b>	<b>Fig. No.</b>	<b>Description</b>	<b>Page</b>
11	<b>Feeding system</b>			
	1101	11.1	Fuel tanks (metallic)	12
	1101	11.2	Fuel tanks (plastic)	14
	1101	11.3	Fuel tank (if the tractor is equipped with a hydraulic host)	16
	1108	11.4	Fuel feeding control	18
	1108	11.5	Fuel feeding control (if the tractor is equipped with a hydraulic host)	20
	1108	11.6	Fuel feeding control (with the Joystick-type control of hydraulic mounted system)	24
	1109	11.7	Donaldson air cleaner assembly (for Д-245.5S2/Д-245.43S2)	26
12	<b>Exhaust system</b>			
	1205	12.1	Silencer	28
13	<b>Cooling system</b>			
	1301, 1302	13.1	Cooling unit (for Belarus -900/900.2/920/920.2/950/950.2/952/952.2)	30
	1306	13.2	Cooling unit (for Д-245.5S2/Д-245.43S2)	34
	1309	13.3	Fan guard	36
	1310	13.4	Shutter	38
	1317	13.5	Charge air cooler (for Д-245.5S2/Д-245.43S2)	40
16	<b>Clutch</b>			
	1601	16.1	Clutch assembly 240-1005009-03	42
	1601	16.1a	Clutch assembly 240-1005009-06	44
	1601	16.2	Clutch casing	46
	1601	16.3	Clutch casing. Shifter	50
	1601	16.4	Clutch casing (PTO drive, mounted attachment hydraulic system pump drive)	52
	1601	16.5	Clutch casing. PTO drive. ( $n_{eng}=2200$ rpm)	54
	1601	16.5a	Clutch casing. PTO drive. ( $n_{eng}=1800$ rpm)	54
17	<b>Gearbox</b>			
	1721	17.1	Mechanical splitter/ mechanical multiplier	58
	1721	17.2	Synchronized splitter/ synchronized multiplier	60
	1723	17.3	Mechanical (synchronized) splitter/multiplier control	62
			Table of equipment of the tractor models with gearboxes	64
	1721	17.4	Synchronized reverse gear	68
	1723	17.5	Synchronized reverse gear control	70
	1701	17.6	Gearbox casing. FDA drive.	72
	1701	17.7	Input and output shafts of the mechanical gearbox	74
	1701	17.8	Input shaft of the synchronized gearbox	76
	1701	17.9	Output shaft of the synchronized gearbox	78
	1701	17.10	Shaft of the first gear and reverse	80
	1701	17.11	Intermediate shaft. Internal shaft.	82
	1702	17.12	Mechanical gearbox control mechanism. Fork body.	84
	1702	17.13	Synchronized gearbox control mechanism. Fork body.	86
1703	17.14	Right single-lever gearbox control mechanism	88	
1703	17.15	Right two-lever gearbox control mechanism	90	

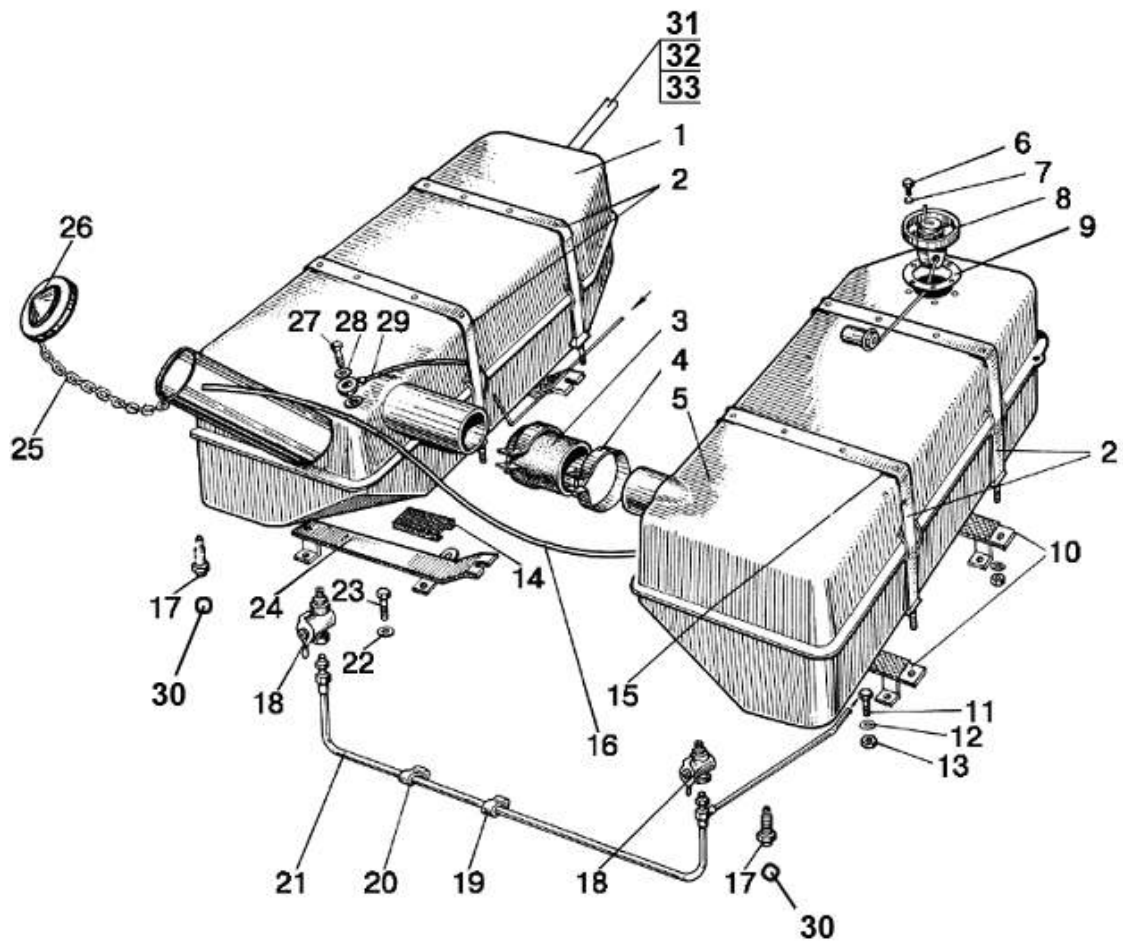


Fig.11.1. Fuel tanks (metallic)

**Group 11. Feeding system  
Subgroup 1108. Fuel feeding control**

(with the Joystick-type control of hydraulic mounted system)

Fig. No.	Pos. No.	Designation	Q-ty	Description
11.6		1221-1108070	1	Rod (5, 9, 11)
		1221-1108080	1	Rod (5, 7, 9)
	1	80B-1108545	1	Bracket
	2	2x12.019 ГОСТ 397-79	6	Cotter pin
	3	80B-1108506	3	Lever
	4	3,2x18.019 ГОСТ 397-79	7	Cotter pin
	5	80B-1108542	4	Rod tip
	6	70-1601109-01	6	Pin
	7	1221-1108029	1	Rod
	8	1221-1108045	1	Bracket
	9	M8-6H.6.019 ГОСТ 5915-70	10	Nut
	10	8T OCT 37.001.115-75	5	Washer
	11	1221-1108073	1	Rod
	12	M8-6gx25.88.35.019 ГОСТ 7796-70	2	Bolt
	13	1221-1108020	1	Bracket
	14	922-1108146	1	Rod
	15	A13.11.00	1	Handle
	16	M14x1,5-6H.6.019 ГОСТ 5915-70	2	Nut
	17	80B-1108347	2	Disk spring
	18	80-1108178	2	Friction washer
	19	822-1108028	1	Washer
	20	1221-1108035	1	Roller
	21	70-1108317	1	Boss
	22	A13.36.001	1	Boot
	23	M10-6gx25.88.35.019 ГОСТ 7796-70	2	Bolt
	24	10 OT OCT 37.001.115-75	2	Washer
	25	M6-6gx30.88.35.019 ГОСТ 7798-70	1	Bolt
	26	M6-6H.6.019 ГОСТ 5915-70	1	Nut
	27	70-4803019	1	Spring
	28	C 8.01.019 ГОСТ 11371-78	4	Washer
	29	80B-1108510	1	Pedal
	30	80B-1108526	1	Rod
	31	8x30 OCT 37.001.163-75	1	Pin
	32	80B-1108344-01 1220-1108344-A**	1	Rod
	33	80B-1108530 800-1108530-A**	1	Bracket
	34	80B-1108541 1025-1108541-01**/(-02,-03)*	1	Rod
	35	A30.04.017	2	Cap
	36	6T OCT 37.001.115-75	2	Washer
	37	M6-6gx12.88.35.019 ГОСТ 7798-70	2	Bolt
	38	80-1108630-A-01	1	Cable
	39	80-1108126	1	Bracket
	40	80-1108317	1	Boss
	42	70-1310441	1	Catch
43	B.M4-6gx10.58.019 ГОСТ 17475-80	1	Screw	

\* 900.2/920.2/950.2/952.2

\*\* 900.3/920.3/950.3/952.3

**Group 13. Cooling system  
Subgroup 1310. Shutter**

<b>Fig. No.</b>	<b>Pos. No.</b>	<b>Designation</b>	<b>Q-ty</b>	<b>Description</b>
13.4		70-1310010-A	1	Shutter (1-29)
	1	70-1310016	1	Slat
	2	A09.01.001	1	Shutter
	3	A09.01.015	1	Drum
	4	C 6.01.019 ГОСТ 11371-78	1	Washer
	5	2x12.019 ГОСТ 397-79	2	Cotter pin
	6	A09.01.005	1	Spring
	7	70-1310441	2	Catch
	8	B.M4-6gx8.58.019 ГОСТ 17473-80	2	Screw
	9	80-1310020	1	Bracket
	10	80B-1310007	1	Shell
	11	70-4803027	1	Bracket
	12	70-1310121-A	1	Control cord
	13	M6-6H.6.019 ГОСТ 5915-70	2	Nut
	14	6T OCT 37.001.115-75	2	Washer
	15	70-1310411	1	Cramp
	16	A09.01.023	1	Spring
	17	70-1310450	1	Drum
	18	70-1310412	1	Slat
	19	70-1310130-A	1	Handle
	20	C 5.01.019 ГОСТ 11371-78	1	Washer
	21	5T OCT 37.001.115-75	1	Washer
	22	B.M5-6gx12.58.019 ГОСТ 17473-80	1	Screw
	23	B.M6-6gx20.58.019 ГОСТ 17473-80	2	Screw
	24	80-4803026	1	Bracket
	25	70-4803022	1	Bush
	26	70Л-1024216	1	Clamp
	27	70-1310013-A	1	Slat
	28	A09.01.004	1	Rod
29	A09.01.011	1	Tip	

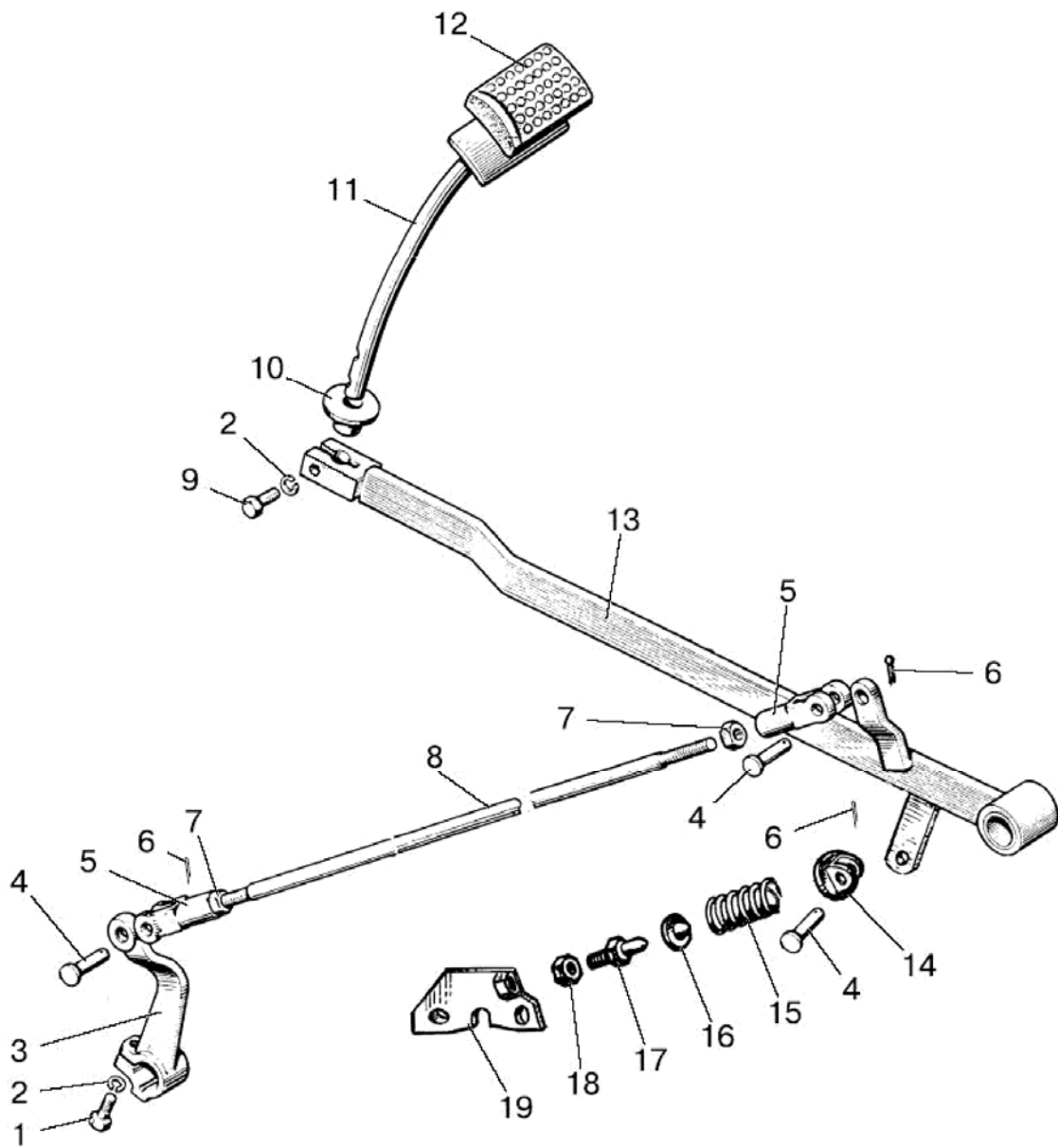


Fig.16.6. Clutch control

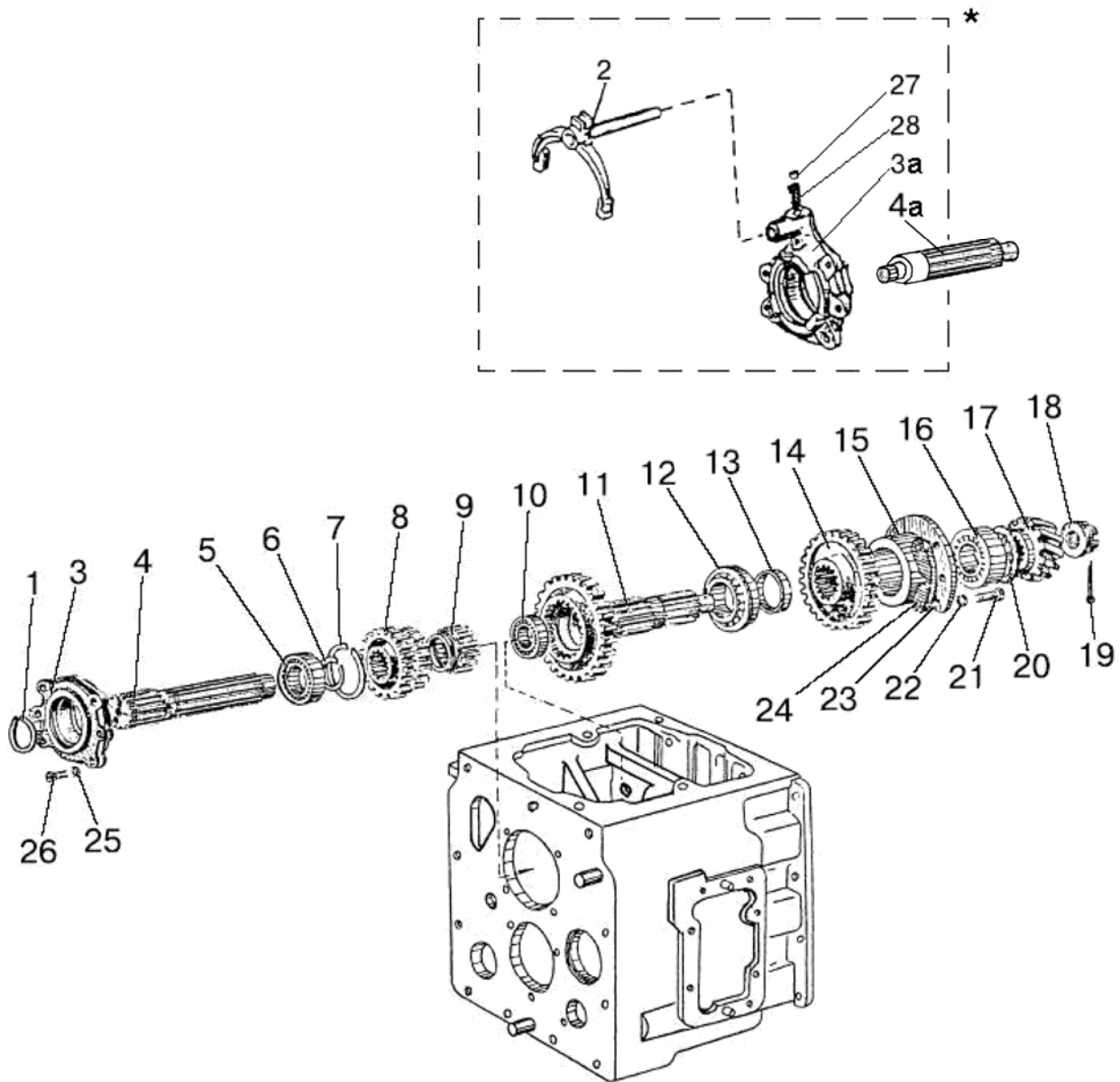


Fig.17.7. Input and output shafts of the mechanical gearbox

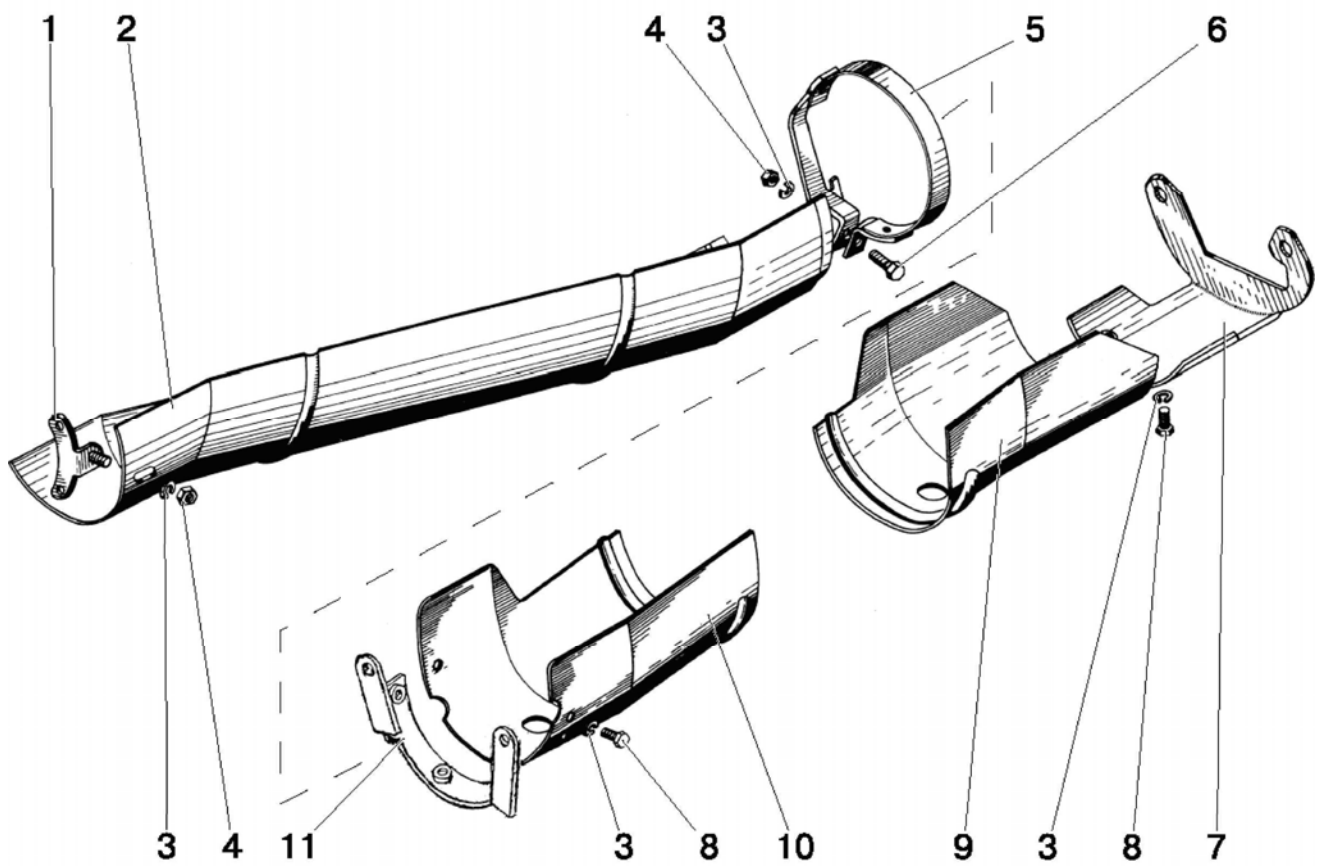


Fig.22.2. Cardan drive guard  
(for Belarus-920/920.2/920.3/952/952.2/952.3)

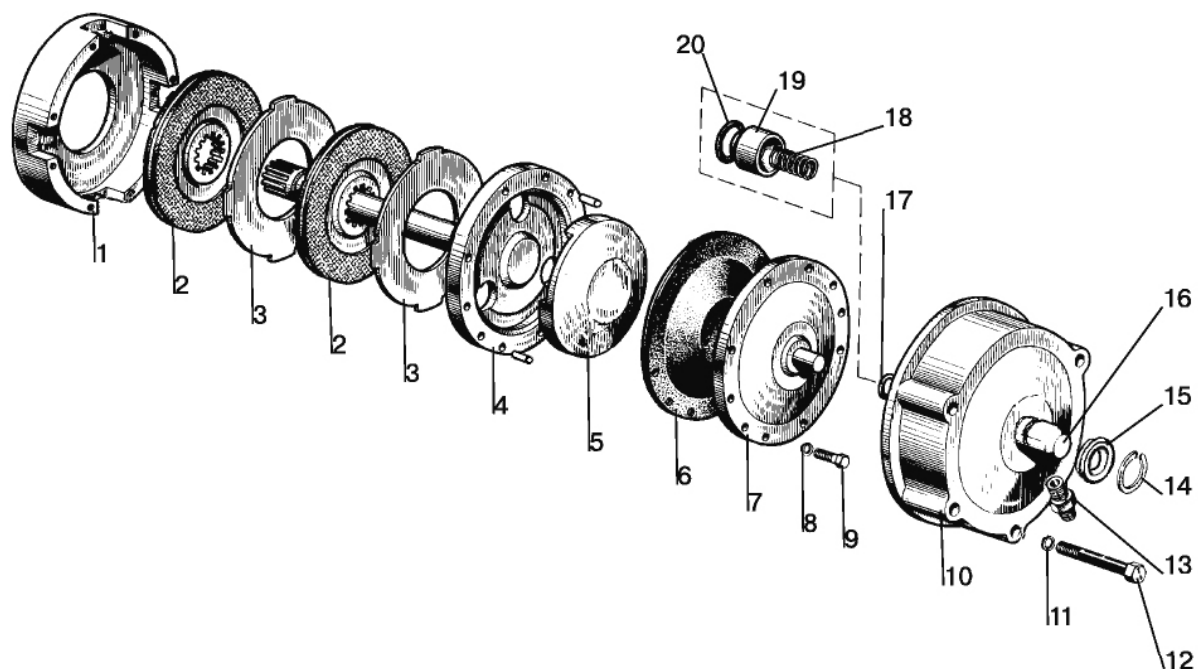


Fig. 24.3. Differential lock mechanism



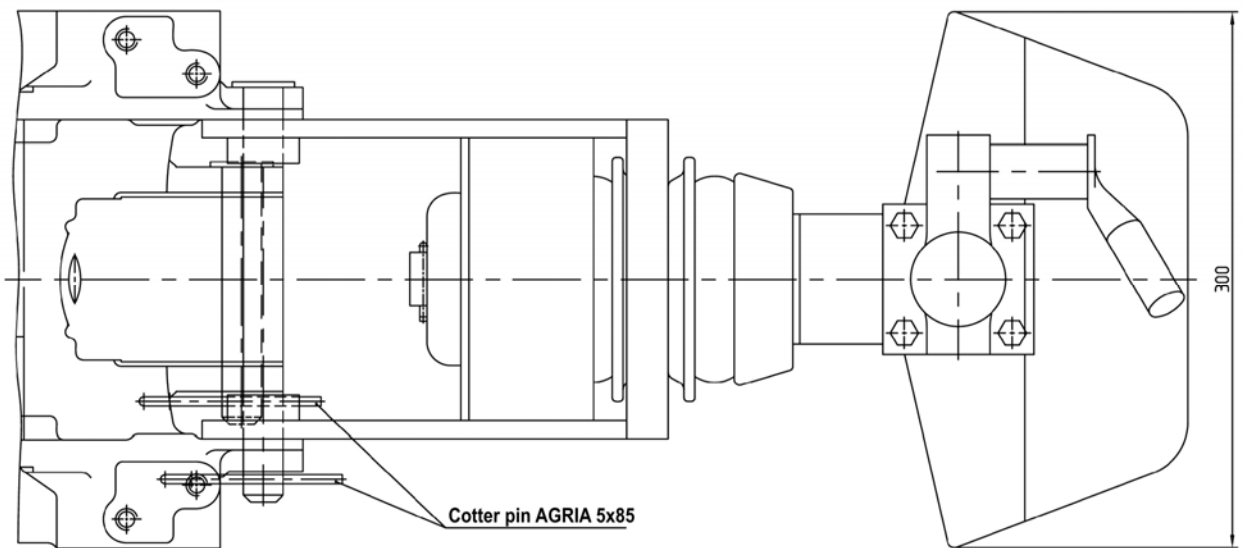
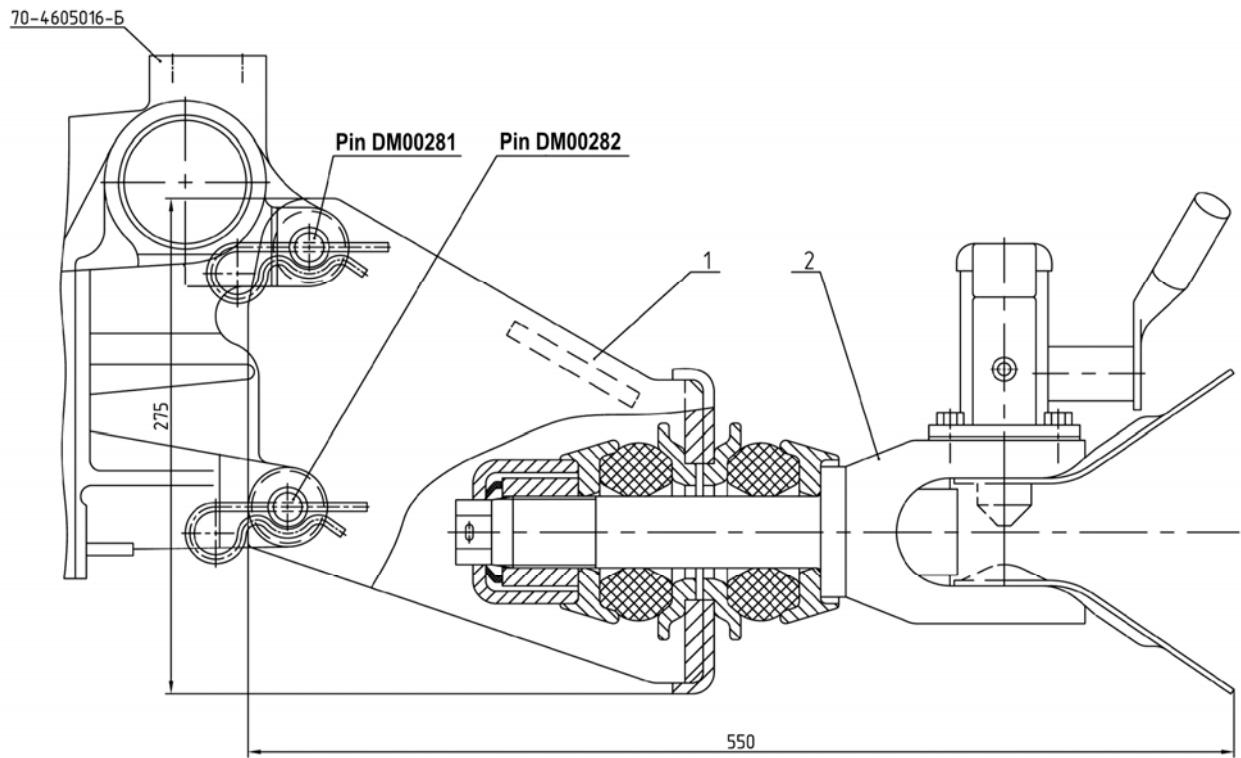


Fig.28.2. Towing arrangement

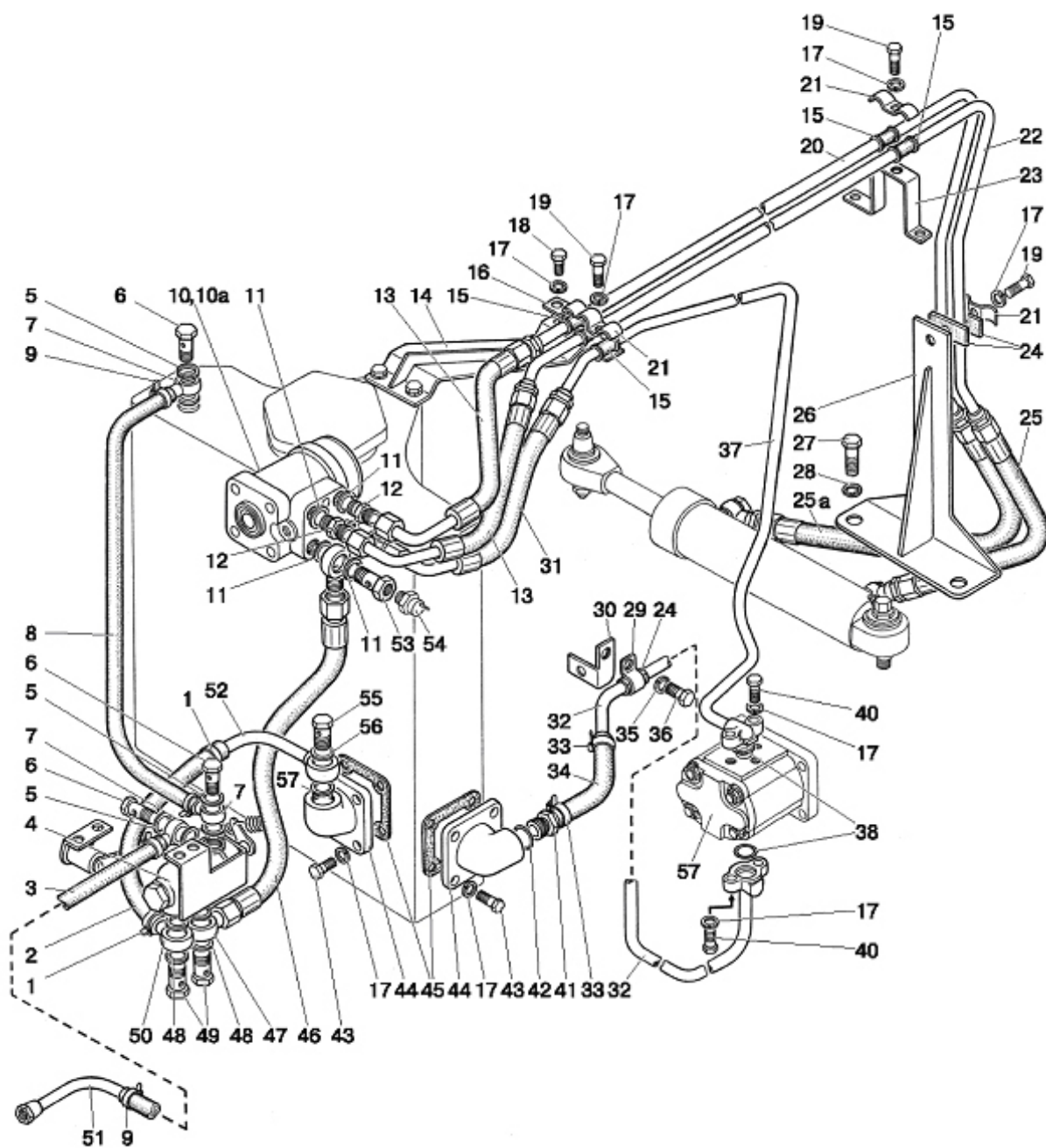


Fig. 34.2. Steering fittings

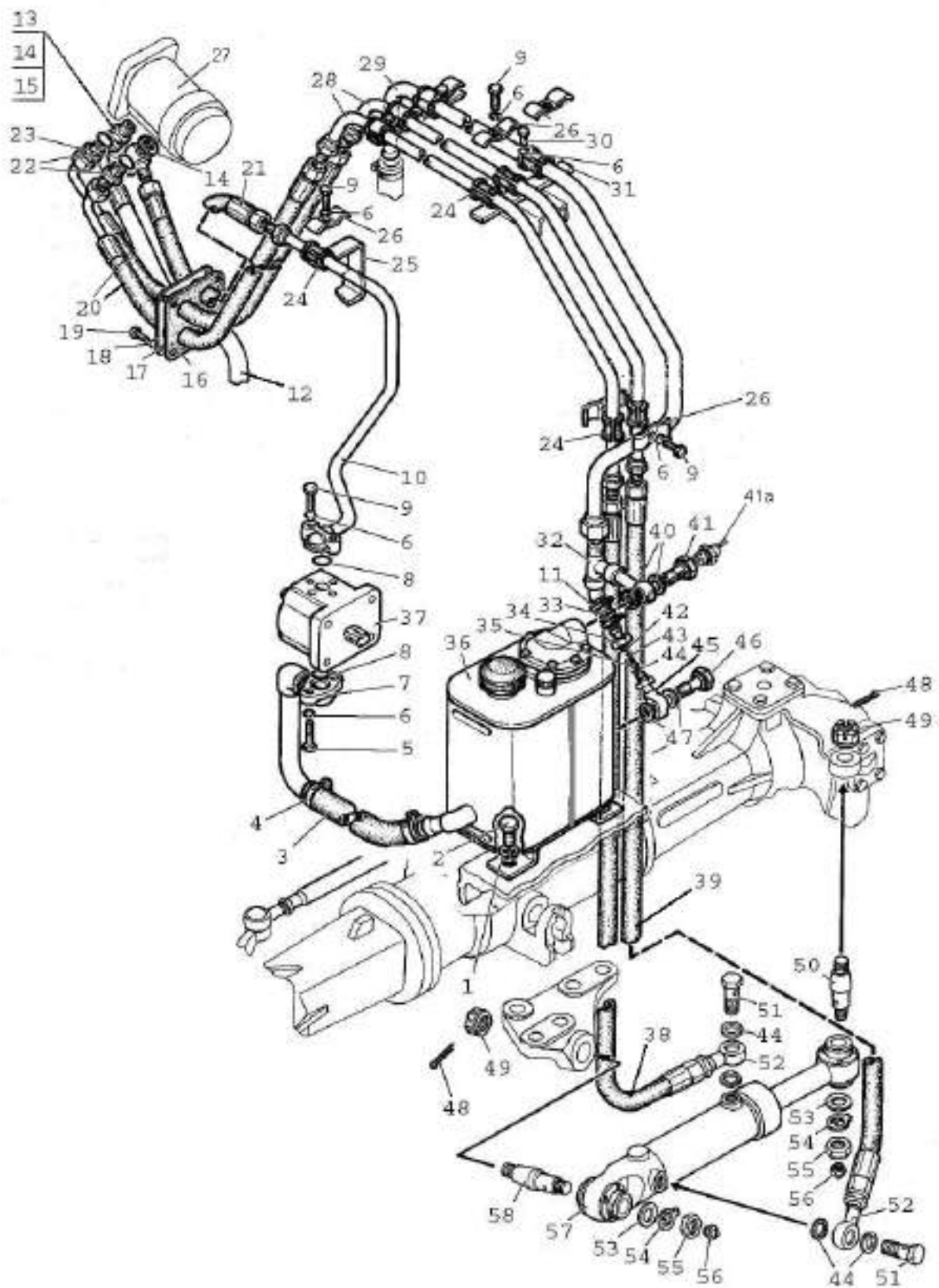


Fig.34.8. Steering with the FDA 822-2300020-04 and separate tank

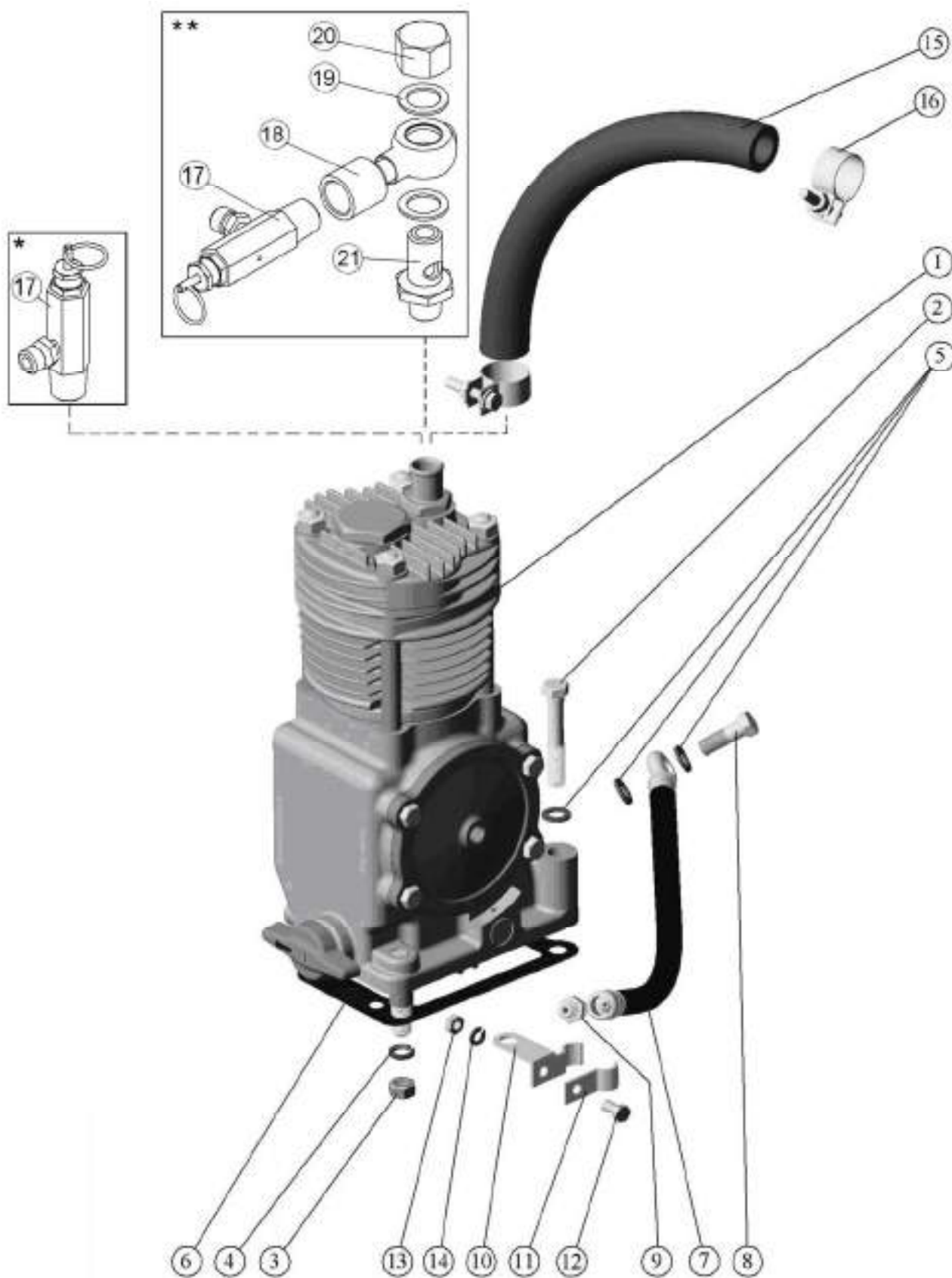


Fig.35.11. Compressor

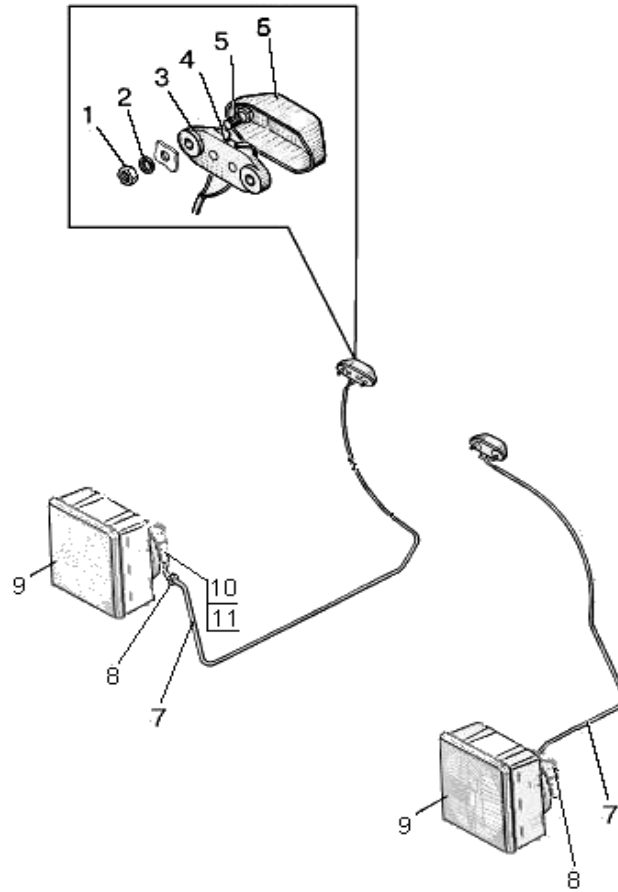


Fig.37.11. Road headlight assembly

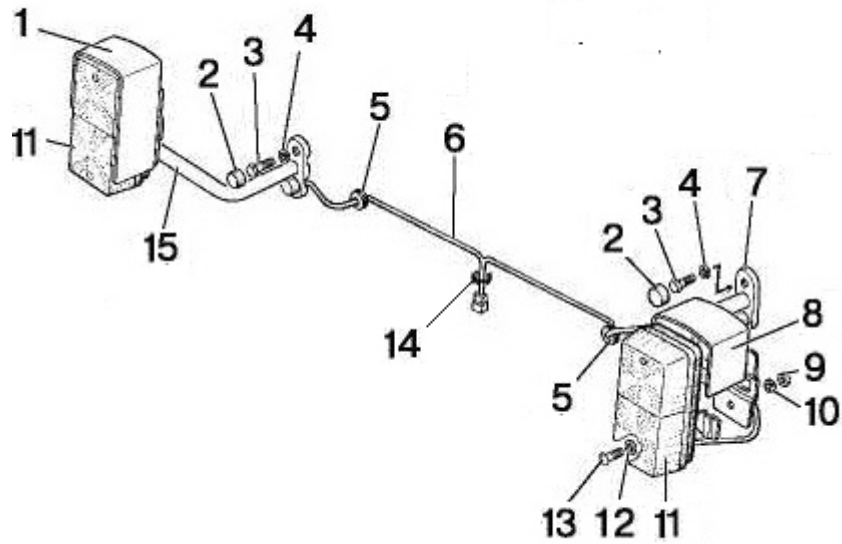


Fig.37.12. Front light assembly

**Group 42. Power take-off shaft  
Subgroup 4211. Driving pulley**

Fig. No.	Pos. No.	Designation	Q-ty	Description
42.3		40-4211010-01	1	Driving pulley to be mounted on the eight-spline PTO shank (1-34)
		40-4211035	1	Casing (12-22, 30-34)
		40-4211040	1	Driving shaft with 8 splines (3-6, 8, 10, 11)
		40-4211050	1	Hose pipe with 8 splines (1-6, 8, 10, 11)
		40-4211065	1	Shaft (16-13, 22)
	1	40-4211052	1	Hose pipe
	2	КФА-50x70	1	Cuff 50x70
	3	40-4211043	1	Nut
	4	36-1701061	1	Washer
	5	211 АУШ1 ГОСТ 8338-75	1	Bearing
	6	40-4211047	1	Bush
	7	40-4211079	1	Gasket
	8	311А ГОСТ 8338-75	1	Bearing
	9	40-4211081	1	Gasket
	10	40-4211045	1	Shaft with eight-spline socket
	11	40-4211082	1	Choke
	12	ПК КГ 3/8"	1	Plug
	13	ПК КГ 3/4"	2	Plug
	14	40-4211037	1	Casing
	15	СУ-1/8"-А	1	Breather
	16	40-4211071	1	Shaft-gear
	17	408 ГОСТ 8338-75	2	Bearing
	18	40-4211072	1	Spacing bush
	19	120-125-30-1-4 ГОСТ 18829-73/9833-73	1	Ring
	20	36-4211054-Б	6	Gasket (0.5 mm)
	21	36-4211055	8	Gasket (0.2 mm)
	22	36-4211048	1	Cage
	23	4x36.019 ГОСТ 397-79	1	Cotter pin
	24	M20x1,5-6H.04.019 ГОСТ 15522-70	1	Nut
	25	40-3502084	1	Washer
	26	40-3502083	1	Gasket
	27	40-4211075	1	Pulley assembly
28	M12-6gx40.88.35.019 ГОСТ 7796-70	6	Bolt	
29	2.2-65x90-1 ГОСТ 8752-79/ ОСТ 38 05146-78	1	Cuff	
30	12 ОТ ОСТ 37.001.115-75	10	Washer	
31	36-4211073	1	Socket	
32	36-4211057	1	Gasket	

**Group 46. Hydraulic mounted system**

**Subgroup 4605. Rear mounted attachment (if the tractor is equipped with a hydraulic host)**

Fig. No.	Pos. No.	Designation	Q-ty	Description	
46.3		822-4605010	1	Mounted system (1-66,68-79)	
		A61.03.000	1	Upper rod (28,52-57) Pin pos.54 Ø22 mm	
		A61.03.000-01*	1	Upper rod (28,52-57) Pin pos.54 Ø25 mm	
		80-4605690*	1	Upper rod (28,52-56,67)	
		1220-4605150-Б-01	1	Adjustable brace (13,21-26,49-51, 58-74)	
		1220-4605610-01	1	Adjustable brace (for solid rod)	
		1220-4605012-Б	1	Brace (17-20)	
		1220-4605612-01*	1	Screwed brace (for solid rod)	
		1220-4605030-Б-02	2	Rod (1,15,16,78,79) b=38 mm	
		1220-4605030-Б-04*	2	Rod (1,15,16,78,79) b=45 mm	
		1220-4605580	2	Brace (6-9)	
		822-4605085	1	Cross-bar (75,81-86)	
		80-4605280	2	Telescopic drawbar (89-91)	
	1		1220-4605108-01	2	Lug
	2		3,2x25.019 ГОСТ 397-79	8	Cotter pin
	3		M12-6H.04.019 ГОСТ 5919-73	8	Nut
	4		50-4605086	8	Bolt
	5		A61.09.002	8	Shackle
	6		1220-4605058	2	Screw
	7		M20-6H.04.019 ГОСТ 5916-70	2	Nut
	8		A61.04.003-01	2	Brace
	9		1220-4605058-01	2	Screw
	10		40-4605098	2	Ring
	11		80-4605091	1	Right bracket
			80-4605091-01	1	Left bracket
	12		M16x1,5-6H.6.019 ГОСТ 5915-70	8	Nut
	13		16 OT OCT 37.001.115-75	16	Washer
	14		H50-4605060	2	Chain with ring
	15		1220-4605050-Б-01	2	Rod (with chain)
	16		1220-4605040	2	Rod (joint b=38 mm)
			1220-4605040-02*	2	Rod (joint b=45 mm)
	17		1220-4605200-Б	1	Fork
			1220-4605620-Б*	1	Fork (for solid rod)
	18		142-4605424	1	Locknut
	19		142-4605422	1	Brace
	20		1220-4605075	1	Screw
	21		142-4605403	1	Restraint
22		A61.01.005	1	Axle	
23		142-4605421	1	Gasket	
24		142-4605418-Б	1	Cover	
25		142-4605408	2	Bolt	
26		1220-4605668-Б	1	Shackle	
27		1220-4605501	1	Right bracket	
28		A61.02.100-03	1	Screw	
29		A61.05.005	1	Locking pin	
30		A61.05.004	1	Ring	
31		A61.10.001-02	1	Pin	
32		1220-4605502	2	Bush	
33		1220-4605504	2	Plate	
34		12 OT OCT 37.001.115-75	4	Washer	
35		M12-6gx25.88.35.019 ГОСТ 7796-70	4	Bolt	
36		1220-4605503	2	Pin	
37		70-2800016-01	2	Bolt	

\* optionally