

GROUP 90

CIRCUIT DIAGRAMS

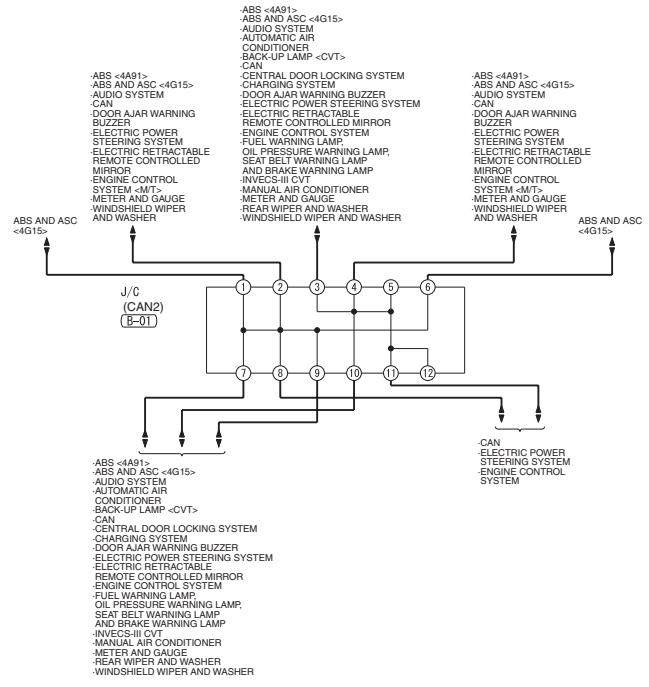
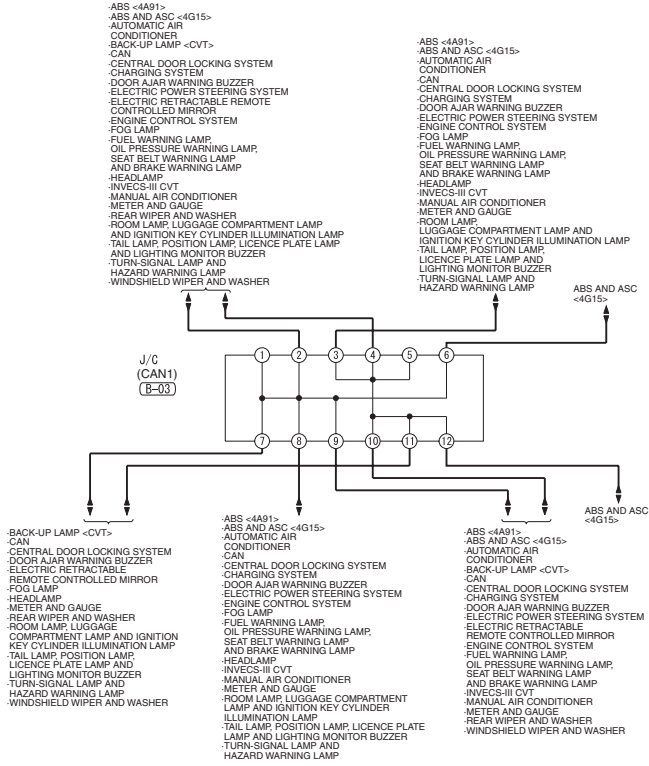
CONTENTS

J/B	90-3	ROOM LAMP, LUGGAGE COMPARTMENT LAMP AND IGNITION KEY CYLINDER ILLUMINATION LAMP	90-37
J/C	90-4	TURN-SIGNAL LAMP AND HAZARD WARNING LAMP	90-39
CENTRALIZED JUNCTION.....	90-7	STOP LAMP	90-41
POWER DISTRIBUTION SYSTEM ..	90-11	BACK-UP LAMP.....	90-42
STARTING SYSTEM	90-13	BACK-UP LAMP <M/T>	90-42
IGNITION SYSTEM	90-14	BACK-UP LAMP <CVT>	90-43
CHARGING SYSTEM	90-15	HORN	90-44
ENGINE CONTROL SYSTEM.....	90-16	METER AND GAUGE.....	90-45
ENGINE CONTROL SYSTEM <4A91-M/T>	90-16	FUEL WARNING LAMP, OIL PRESSURE WARNING LAMP SEAT BELT WARNING LAMP AND BRAKE WARNING LAMP	90-47
ENGINE CONTROL SYSTEM <4A91-CVT>	90-19	POWER WINDOWS	90-48
ENGINE CONTROL SYSTEM <4G15> ...	90-22	CENTRAL DOOR LOCKING SYSTEM	90-50
COOLING SYSTEM.....	90-25	MANUAL AIR CONDITIONER	90-53
COOLING SYSTEM <4A91>	90-25	AUTOMATIC AIR CONDITIONER ...	90-55
COOLING SYSTEM <4G15>	90-26	WINDSHIELD WIPER AND WASHER.....	90-57
INVECS-III CVT	90-27		
HEADLAMP	90-29		
TAIL LAMP, POSITION LAMP, LICENCE PLATE LAMP AND LIGHTING MONITOR BUZZER.....	90-31		
FOG LAMP.....	90-33		
FOG LAMP <4A91>	90-33		
FOG LAMP <4G15>	90-35		

Continued on next page

REAR WIPER AND WASHER	90-59	ABS AND ASC <4G15>	90-70
REAR WINDOW DEFOGGER	90-61	ELECTRIC POWER STEERING SYSTEM	90-72
REAR WINDOW DEFOGGER <VEHICLES WITH MANUAL AIR CONDITIONER>	90-61	SRS	90-74
REAR WINDOW DEFOGGER <VEHICLES WITH AUTOMATIC AIR CONDITIONER> .	90-62	IMMOBILISER SYSTEM	90-76
ELECTRIC RETRACTABLE REMOTE CONTROLLED MIRROR	90-63	SUNROOF	90-77
AUDIO SYSTEM	90-65	CAN	90-78
CLOCK	90-66	DOOR AJAR WARNING BUZZER . . .	90-80
CIGARETTE LIGHTER	90-67	SPARE CONNECTOR (FOR REMOTE CONTROL POLE) . . .	90-82
ABS <4A91>	90-68		

J/C (CONTINUED)



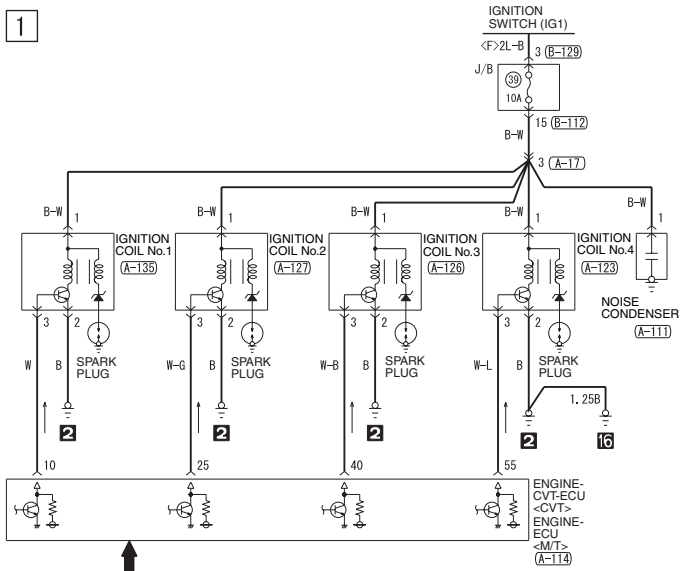
PASSENGER COMPARTMENT

No.	Power source circuit	Name	Rated capacity (A)	Housing colour	Load circuit
1	Fusible link No.1 (in fusible link box)	Fusible link	40	Green	Ignition switch circuit
2			40	Green	Power window main switch and power window sub switch
3			40	Green	Cooling fan motor
4			–	–	–
5	Fusible link No.6 (in fusible link box)	Fuse	30	Green	Rear window defogger
6			–	–	–
7			–	–	–
8	Fusible link No.6 (in fusible link box)		30	Green	Combination meter, blower motor, power transistor and resistor
9	Ignition switch (ACC)		10	Red	ETACS-ECU, radio and CD player
10	Fusible link No.1 (in fusible link box)		10	Red	ETACS-ECU, ignition key cylinder illumination lamp, luggage compartment lamp and room lamp
11	Fusible link No.6 (in fusible link box)		7.5	Brown	–
12	Ignition switch (IG2)		7.5	Brown	Sunroof motor assembly
13	Ignition switch (ACC)		20	Yellow	ETACS-ECU, windshield wiper motor and washer motor
14	ETACS-ECU (tail lamp relay)		7.5	Brown	Fog lamp switch, hazard warning switch, position lamp and tail lamp
15			7.5	Brown	Licence plate lamp, position lamp and tail lamp
16	Fusible link No.1 (in fusible link box)		20	Yellow	Air flow sensor <4G15>, camshaft position sensor, crank angle sensor, EGR valve <CVT>, engine control relay, engine-CVT-ECU <CVT>, engine-ECU <M/T>, fuel pressure control solenoid valve <4G15>, injector, oxygen sensor, primary speed sensor <CVT>, purge control solenoid valve, oil feeder control valve, secondary speed sensor <CVT>, turbine speed sensor <CVT>, throttle valve control servo relay and wastegate solenoid valve <4G15>
17			15	Blue	Fuel pump and gauge unit
18			10	Red	Horn and horn relay
19		Headlamp relay: HI		10	Red
20			10	Red	Headlamp (HI)
21	–		–	–	–
22	–		–	–	–
23	Ignition switch (ACC)		7.5	Brown	Door mirror assembly

IGNITION SYSTEM

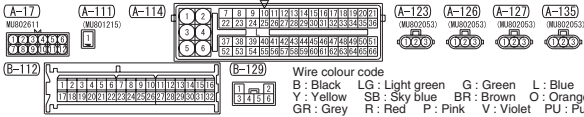
M1901000603667

1



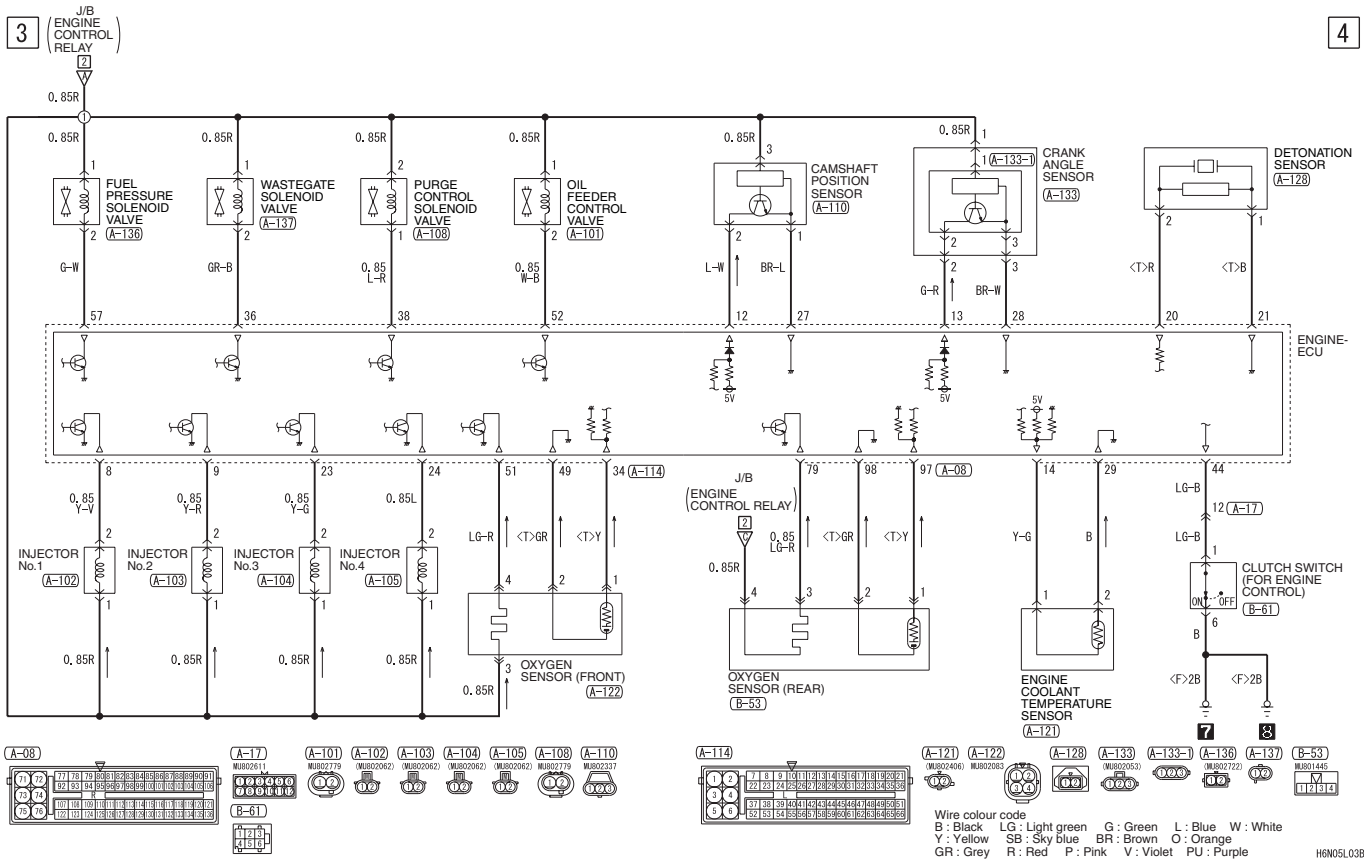
INPUT SIGNAL

ACCELERATOR PEDAL POSITION SENSOR	MANIFOLD ABSOLUTE PRESSURE SENSOR
CAMSHAFT POSITION SENSOR	OXYGEN SENSOR SECONDARY
CRANK ANGLE SENSOR	SPEED SENSOR <CVT>
DETONATION SENSOR	THROTTLE POSITION SENSOR
ENGINE COOLANT TEMPERATURE SENSOR	WHEEL SPEED SENSOR <MT>
IGNITION SWITCH (ST) <CVT>	

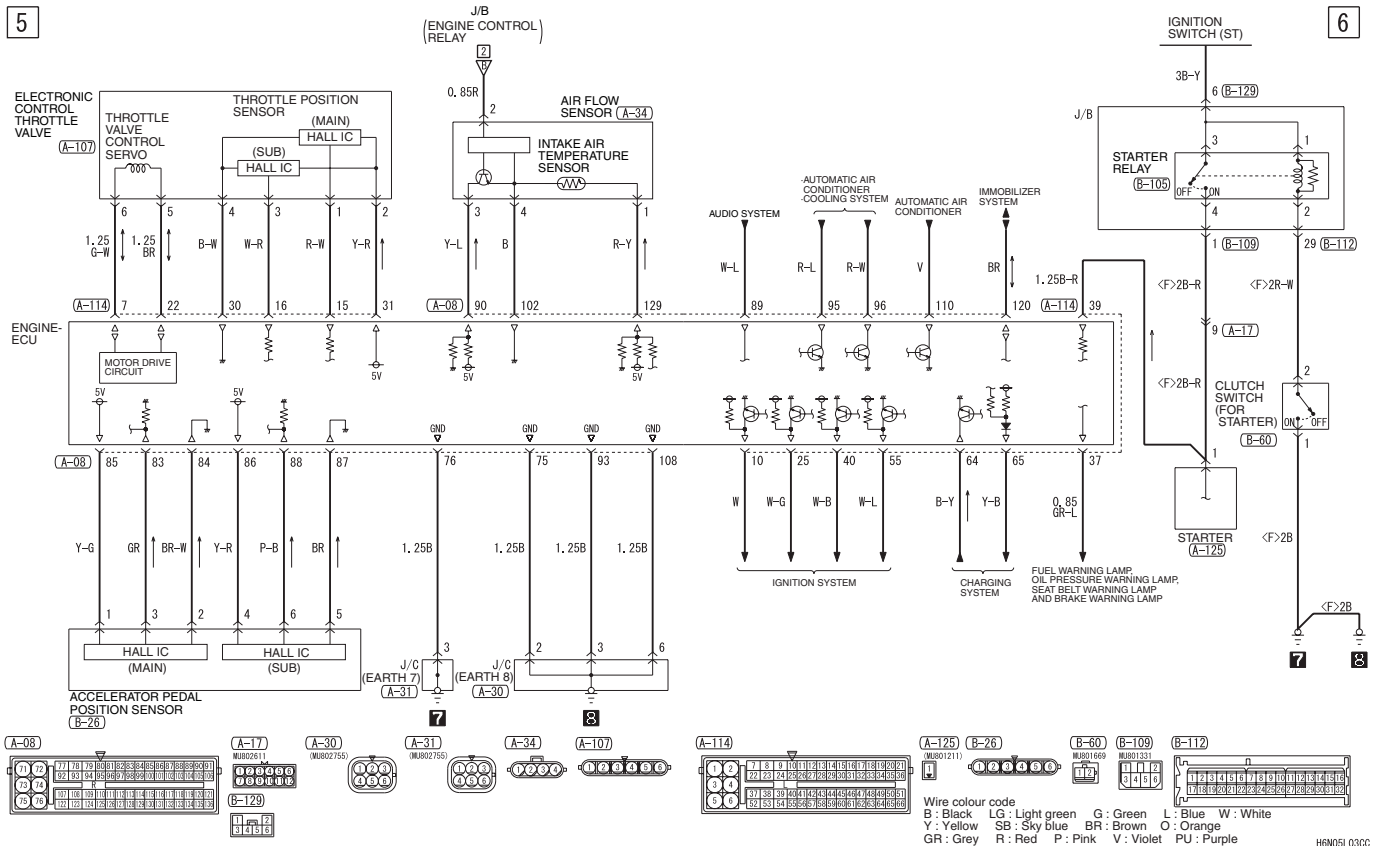


Wire colour code
 B : Black LG : Light green G : Green L : Blue W : White
 Y : Yellow SB : Sky blue BR : Brown O : Orange
 GR : Grey R : Red P : Pink V : Violet PU : Purple H6N03L01AC

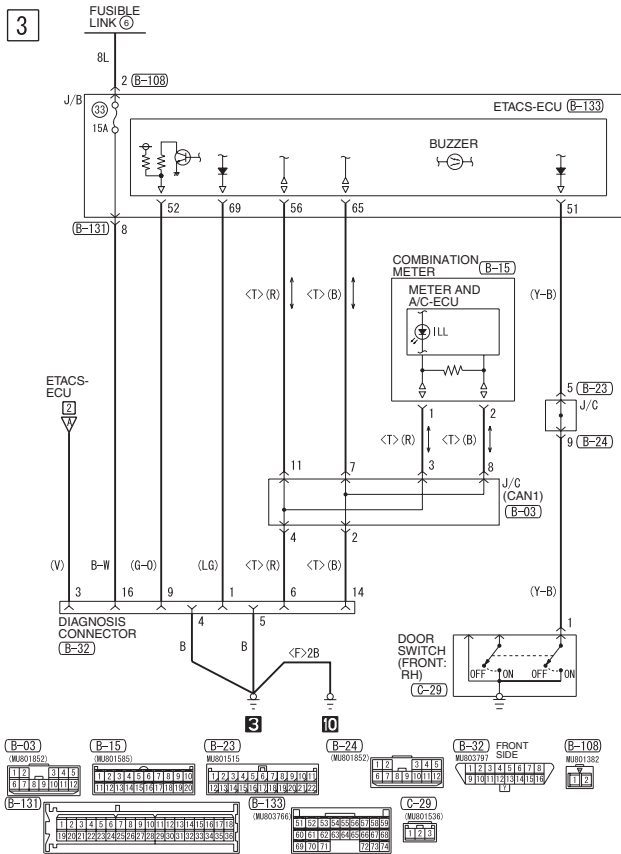
ENGINE CONTROL SYSTEM <4G15> (CONTINUED)



ENGINE CONTROL SYSTEM <4G15> (CONTINUED)



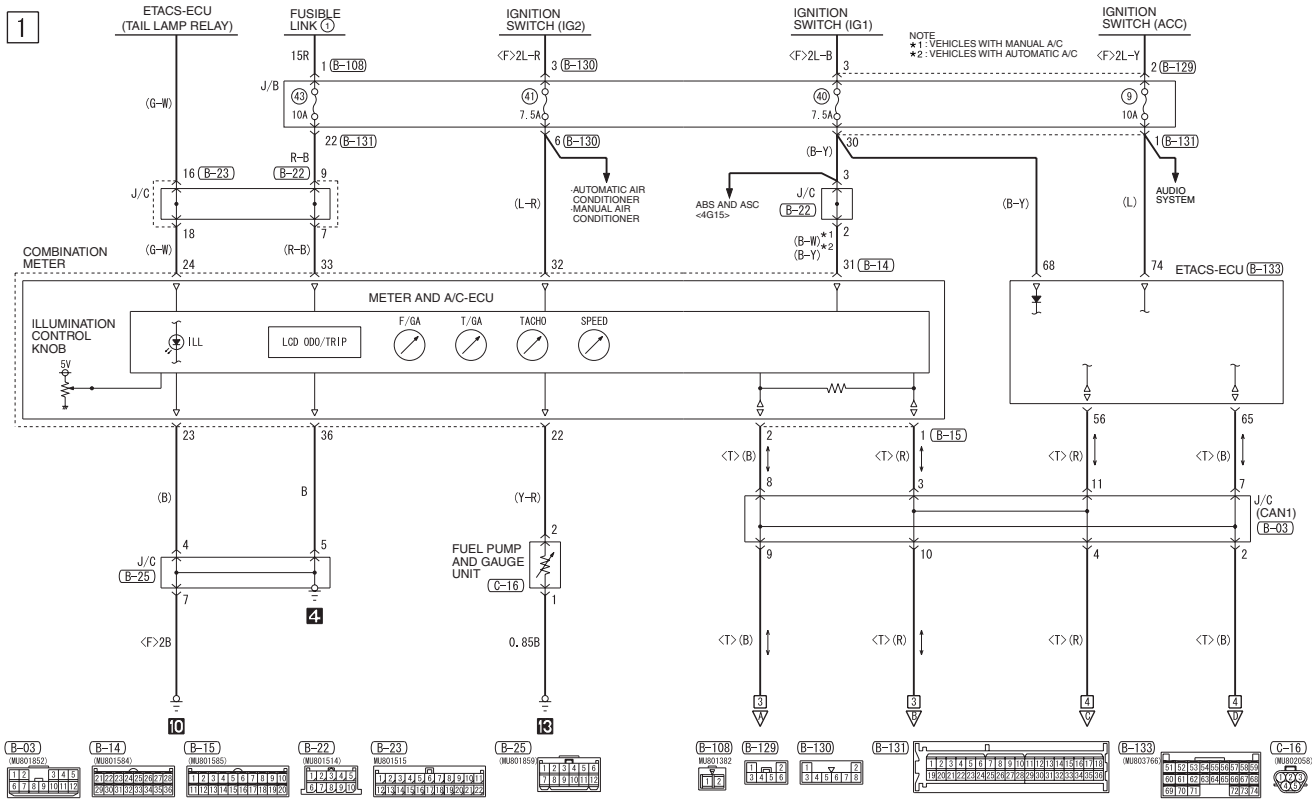
TAIL LAMP, POSITION LAMP, LICENCE PLATE LAMP AND LIGHTING MONITOR BUZZER (CONTINUED)



H6N08L05BC

METER AND GAUGE

M1901003502837



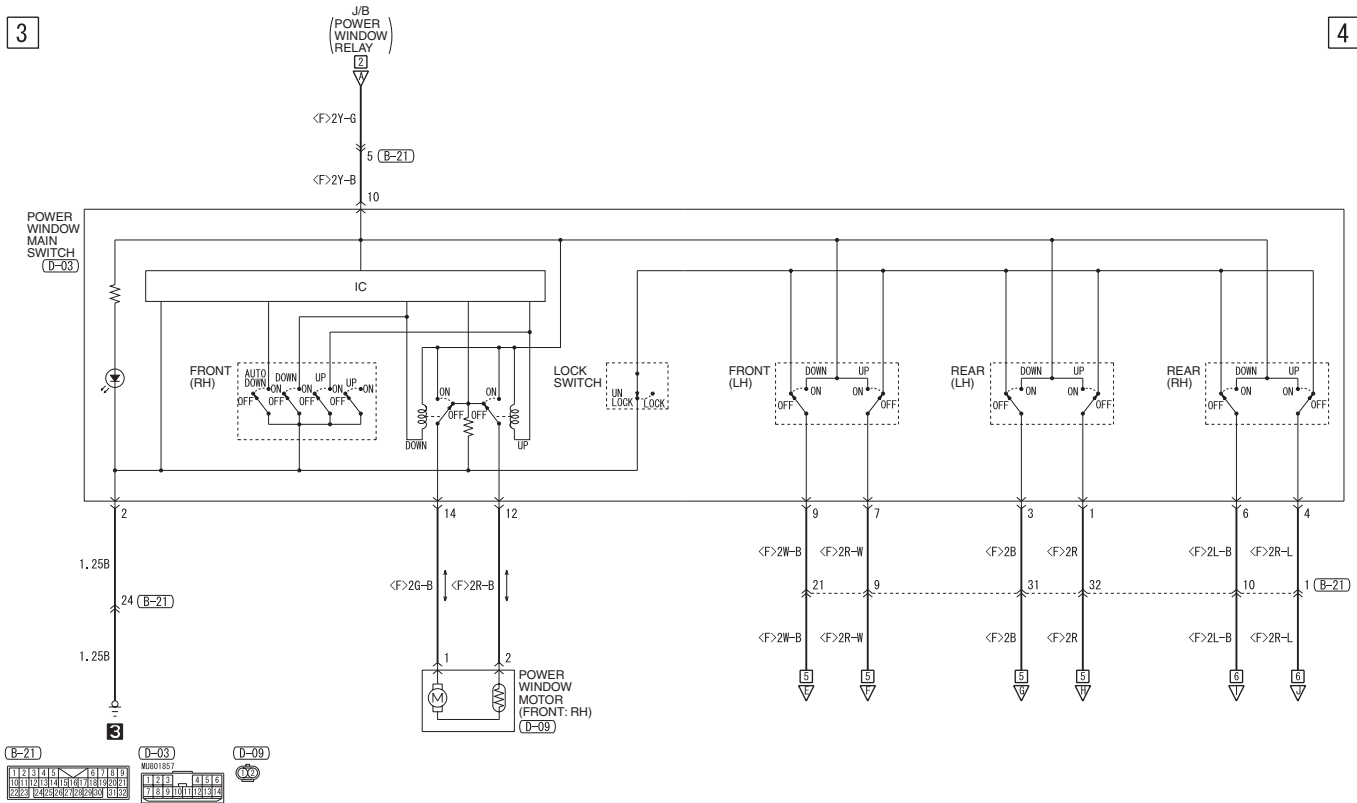
Wire colour code
 B: Black LG: Light green G: Green L: Blue W: White Y: Yellow SB: Sky blue
 BR: Brown O: Orange GR: Grey R: Red P: Pink V: Violet PU: Purple

H6N10L02AC

POWER WINDOWS (CONTINUED)

3

4



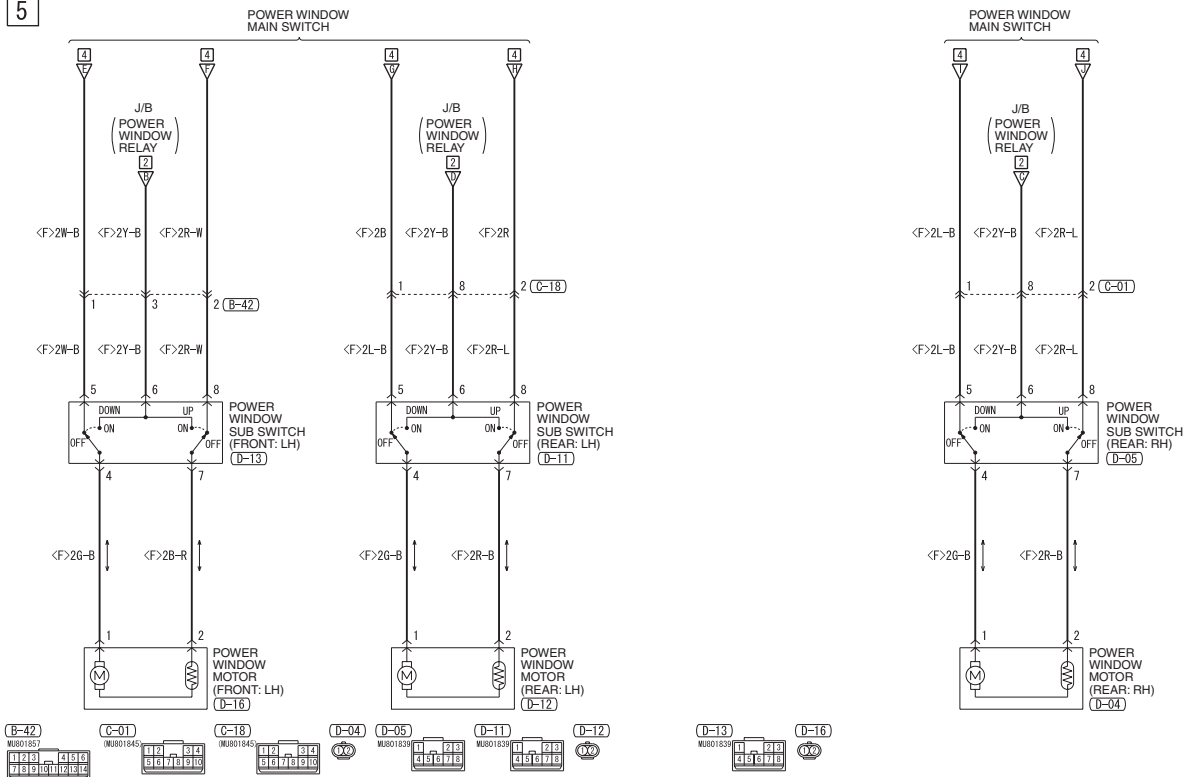
Wire colour code
B : Black LG : Light green G : Green L : Blue W : White Y : Yellow SB : Sky blue
BR : Brown O : Orange GR : Gray R : Red P : Pink V : Violet

H6N11.02B/C

POWER WINDOWS (CONTINUED)

5

6

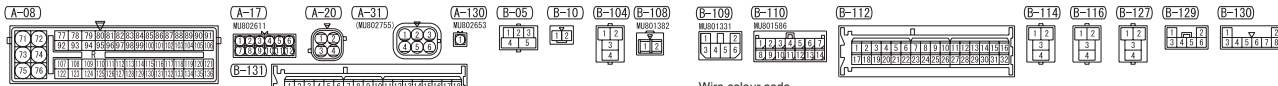
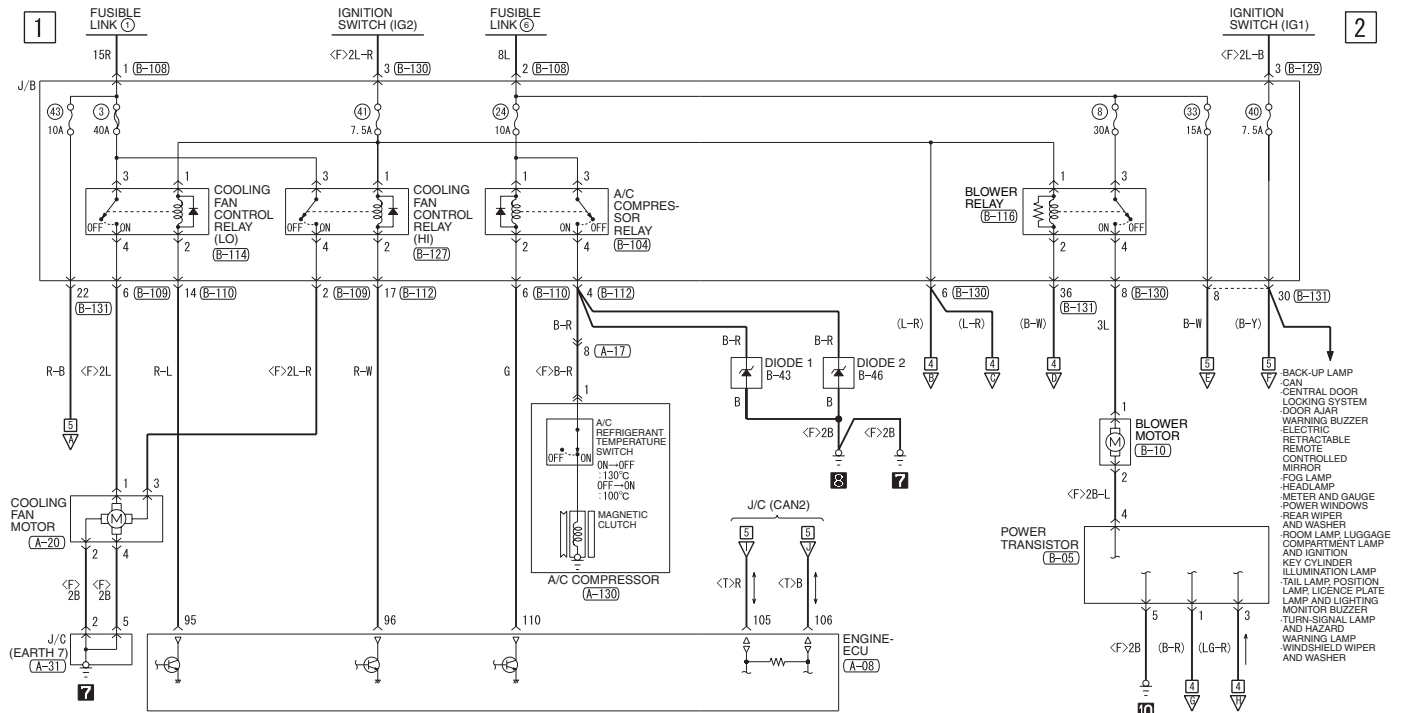


Wire colour code
B : Black LG : Light green G : Green L : Blue W : White Y : Yellow SB : Sky blue
BR : Brown O : Orange GR : Grey R : Red P : Pink V : Violet

H6N11.02B/C

AUTOMATIC AIR CONDITIONER

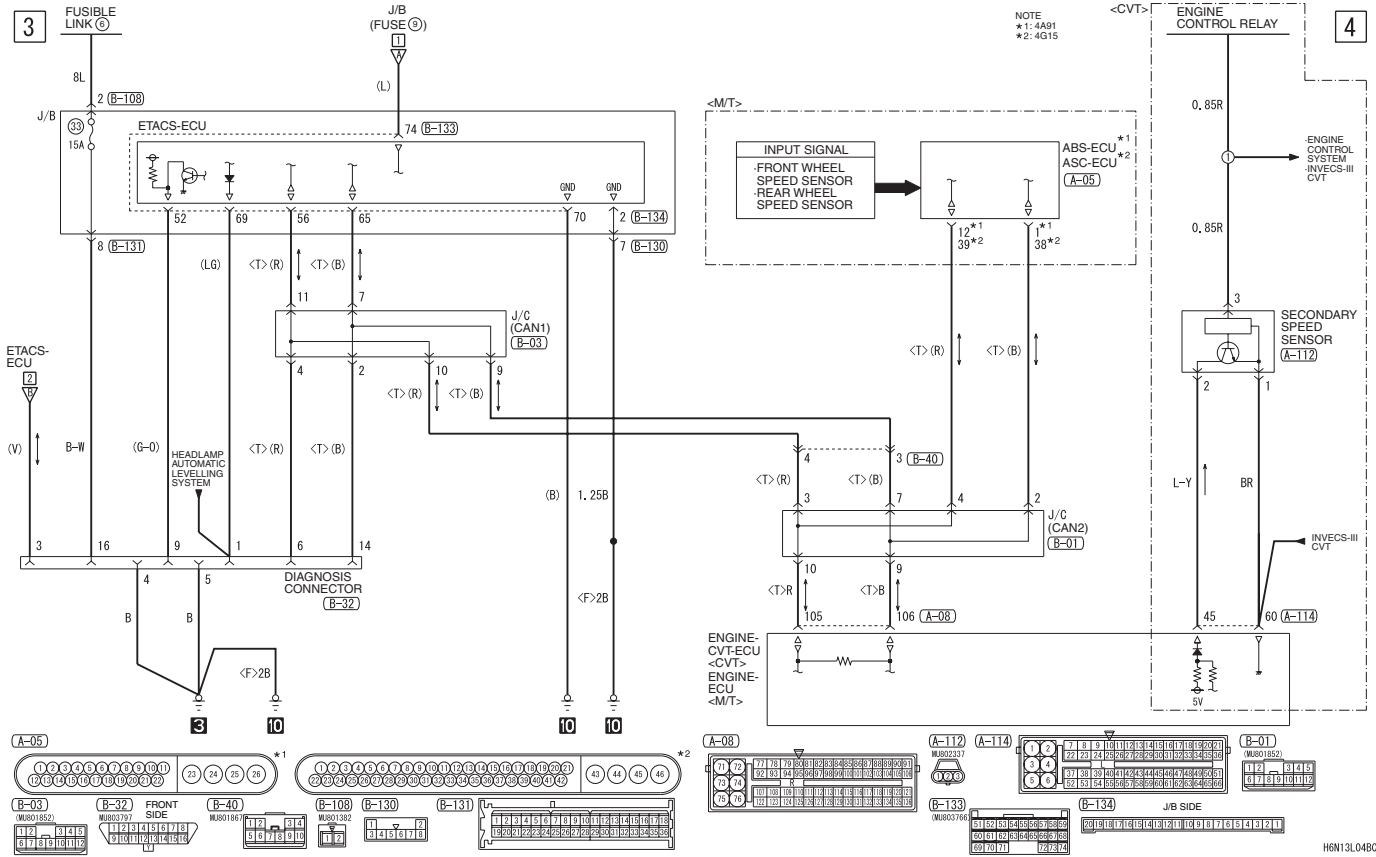
M1901005601310



Wire colour code
 B : Black LG : Light green GR : Green L : Blue W : White Y : Yellow SB : Sky blue
 BR : Brown O : Orange P : Pink V : Violet PU : Purple

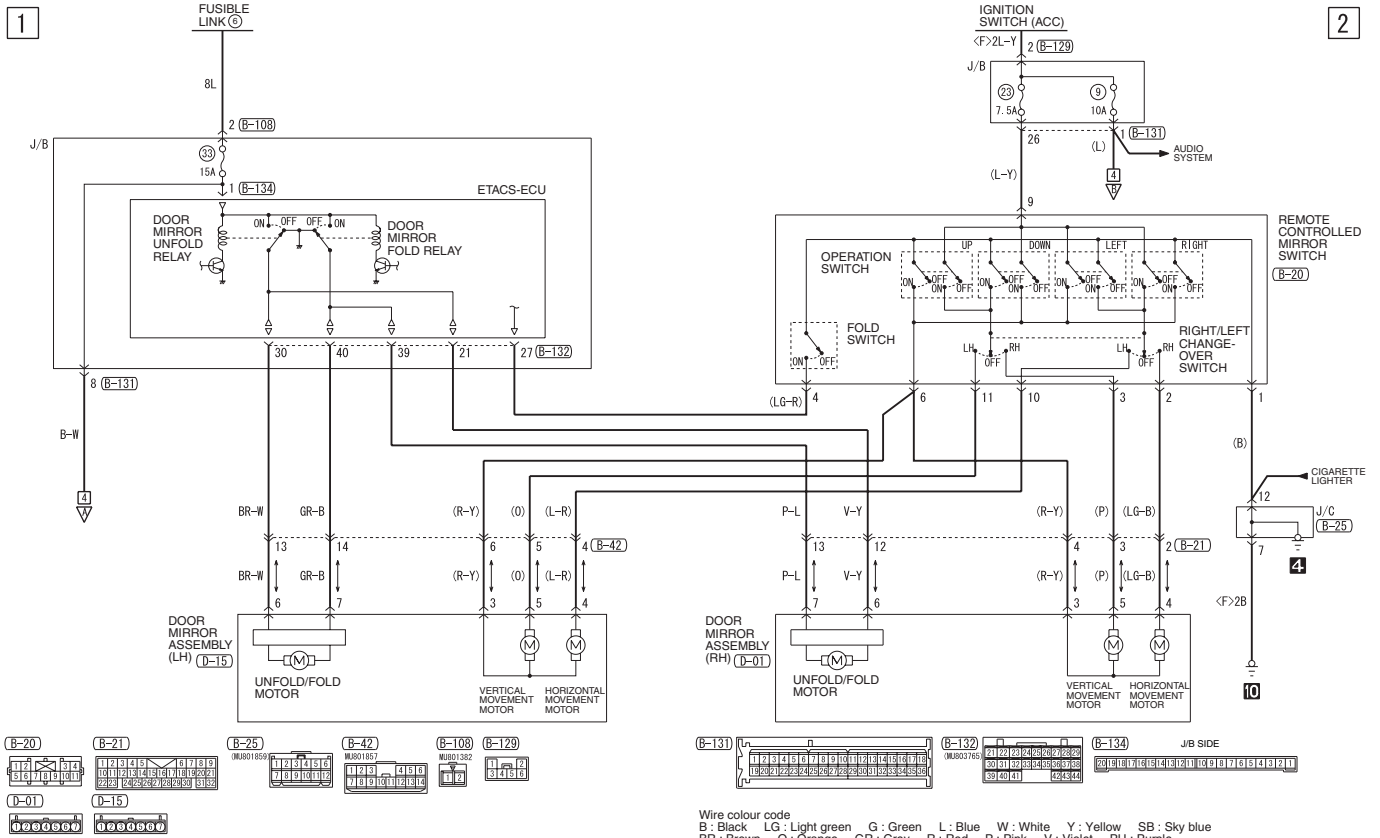
H6N12L02AC

WINDSHIELD WIPER AND WASHER (CONTINUED)



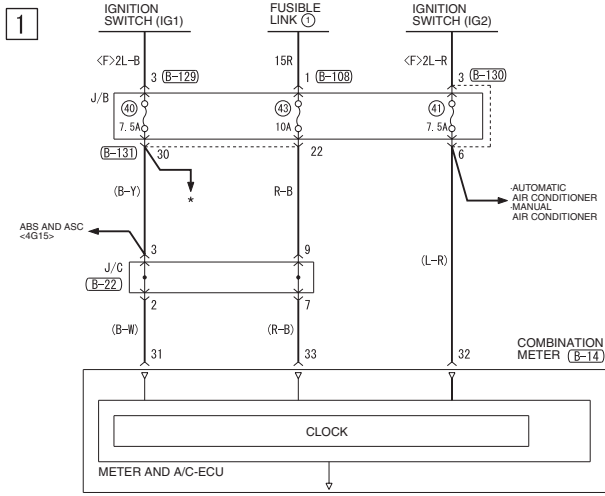
ELECTRIC RETRACTABLE REMOTE CONTROLLED MIRROR

M1901006600343



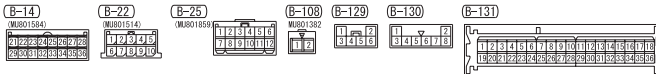
CLOCK

M1901007701539



NOTE

- * : BACK-UP LAMP
- CAN
- CENTRAL DOOR LOCKING SYSTEM
- DOOR AJAR WARNING BUZZER
- ELECTRIC RETRACTABLE
- REMOTE CONTROLLED MIRROR
- FOG LAMP
- HEADLAMP
- METER AND GAUGE
- POWER WINDOWS
- REAR WIPER AND WASHER
- ROOM LAMP, LUGGAGE
- COMPARTMENT LAMP AND ILLUMINATION LAMP
- TAIL LAMP, POSITION LAMP
- LICENCE PLATE LAMP AND LIGHTING MONITOR BUZZER
- TURN-SIGNAL LAMP AND HAZARD WARNING LAMP
- WINDSHIELD WIPER AND WASHER



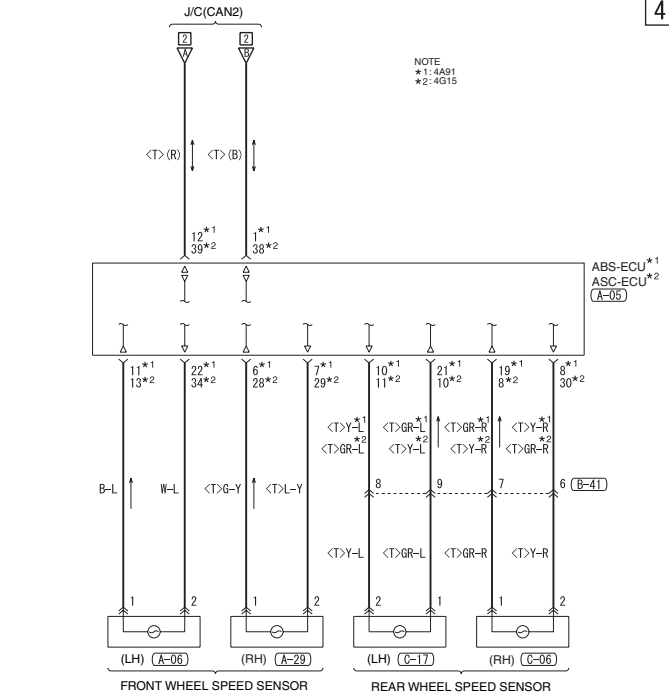
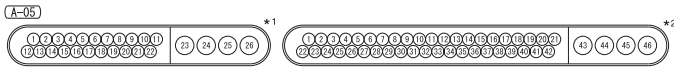
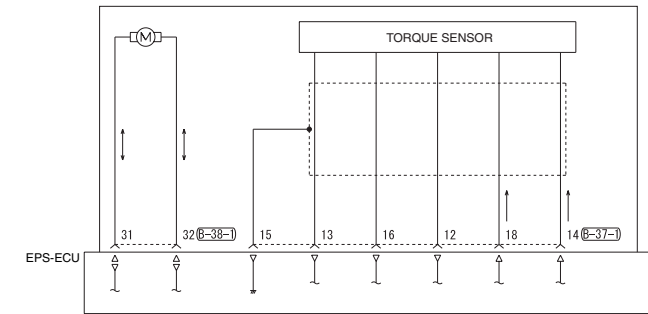
Wire colour code
 B : Black LG : Light green G : Green L : Blue W : White Y : Yellow SB : Sky blue
 BR : Brown O : Orange GR : Grey R : Red P : Pink V : Violet PU : Purple

H6N14L04AC

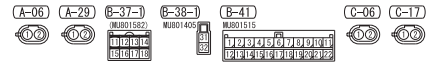
ELECTRIC POWER STEERING SYSTEM (CONTINUED)

3

4



NOTE
*1: 4A91
*2: 4G15



Wire colour code
B: Black LG: Light green G: Green L: Blue W: White Y: Yellow SB: Sky blue
BR: Brown O: Orange GR: Grey R: Red P: Pink V: Violet PU: Purple