

INSTRUCTIONS AND CHARTS (CHAPTER 2)

2.1. ABBREVIATIONS, P. 1

| INTERNATIONAL TRUCK AND ENGINE CORPORATION | | | | ELECTRICAL CIRCUIT DIAGRAM | | CHAPTER 2 | |
|--|---------------------|--------------|----------------|----------------------------|--------------|--------------|-------------|
| THIS PRINT IS PROVIDED ON A RESTRICTED BASIS AND IS NOT TO BE USED IN ANY WAY DETRIMENTAL TO THE INTEREST OF INTERNATIONAL TRUCK AND ENGINE CORPORATION. | | | | ABBREVIATIONS | | | |
| ABBREVIATION | DESCRIPTION | ABBREVIATION | DESCRIPTION | ABBREVIATION | DESCRIPTION | ABBREVIATION | DESCRIPTION |
| ACCESS | ACCESSORY | CRUS | CRUISE | FWR | POWER | | |
| ACCUM | ACCUMULATOR | CUR | CURRENT | PRESS | PRESSURE | | |
| AC | AIR CONDITIONING | DPNL | DASHBOARD | RAD | RADIO | | |
| AIR CLNR | AIR CLEANER | DEFTR | DEFLECTOR | RR | REAR | | |
| ALT | ALTERNATOR | DFR | DEFROSTER | RLY | RELAY | | |
| ACCEL | ACCELERATOR | DEG | DEGREE | RES | RESISTOR | | |
| AC | ALTERNATING CURRENT | DIAG | DIAGRAM | REGEN | REGENERATE | | |
| AFTTR | AFTERTREATMENT | DSL | DIESEL | R | RIGHT | | |
| AMM | AMMETER | DIFF | DIFFERENTIAL | RTR | ROTOR | | |
| AMP | AMPERE | DIMR | DIMMER | SNSR | SENSOR | | |
| AMP HR | AMPERE HOUR | ELEC | ELECTRICAL | SHLD | SHIELD | | |
| AMPL | AMPLIFIER | ELEX | ELECTRONICS | SHFT | SHIFTER | | |
| ARM | ARMATURE | ENG | ENGINE | SLPR | SLEEPER | | |
| ARSR | ARRESTER | EXH | EXHAUST | SLV | SLEEVE | | |
| ASSY | ASSEMBLY | FL | FLUID | SPKR | SPEAKER | | |
| AUX | AUXILIARY | FWD | FORWARD | SPR | SPRING | | |
| B/U | BACK-UP | FR | FRONT | STD | STANDARD | | |
| BTRY | BATTERY | FREQ | FREQUENCY | STRG | STEERING | | |
| BM | BENCHMARKING | GA | GAUGE | STLITE | SATELLITE | | |
| BLK | BLOCK | GEN | GENERATOR | SUNSH | SUNSHADE | | |
| BOOS | BOOSTER | GND | GROUND | SW | SWITCH | | |
| BOT | BOTTOM | HARN | HARNES | SYS | SYSTEM | | |
| BK | BRAKE | HDLP | HEADLAMP | TACH | TACHOMETER | | |
| BRKR | BREAKER | HTD | HEATED | TEMP | TEMPERATURE | | |
| BRTHR | BREATH | HT TR | HEAT TREAT | TERM | TERMINAL | | |
| BRI | BRIGHT | HTR | HEATER | THROT | THROTTLE | | |
| BUZ | BUZZER | HP | HORSEPOWER | THRU | THROUGH | | |
| CA | CABLE | HYD | HYDRAULIC | TRAC | TRACTION | | |
| CD | CANDELA | ID | IDENTIFICATION | TRLR | TRAILER | | |
| CP | CANDLEPOWER | IGN | IGNITION | XDCR | TRANSDUCER | | |
| CAP | CAPACITOR | ILLUM | ILLUMINATION | XFER | TRANSFER | | |
| CAT | CATERPILLAR | IND | INDICATOR | XFMR | TRANSFORMER | | |
| CHAS | CHASSIS | INST | INSTRUMENT | XSTR | TRANSISTOR | | |
| CH | CHOKE | INT | INTERMITTENT | XMSN | TRANSMISSION | | |
| CIRC | CIRCUIT | L | LEFT | XMTR | TRANSMITTER | | |
| CLK | CLOCK | LT | LIGHT | TRK | TRUCK | | |
| CW | CLOCKWISE | LTR | LIGHTER | UPR | UPPER | | |
| CLSTR | CLUSTER | LWR | LOWER | VLV | VALVE | | |
| CL | CLUTCH | MAG | MAGNET | VERT | VERTICAL | | |
| COL | COLUMN | MOD | MODULATOR | VM | VOLTMETER | | |
| COMM | COMMUTATOR | MDL | MODULE | VOL | VOLUME | | |
| COMPNT | COMPONENT | MOT | MOTOR | WSHR | WASHER | | |
| CPRSSR | COMPRESSOR | MTD | MOUNTED | WHL | WHEEL | | |
| CONN | CONNECTOR | NEG | NEGATIVE | WDO | WINDOW | | |
| CONT | CONTINUED | N/ | NOT WITH | WSHLD | WINDSHIELD | | |
| CSL | CONSOLE | NO | NUMBER | WPR | WIPER | | |
| CONT | CONTACT | PASS | PASSENGER | W/ | WITH | | |
| CONT | CONTROL | POSN | POSITION | W/O | WITHOUT | | |
| CONV | CONVERTER | POS | POSITIVE | | | | |
| CLR | COOLER | POT | POTENTIOMETER | | | | |
| CTSY | COURTESY | | | | | | |

| | | | | | | | |
|------|---------|------------------|-----|-----------|-------------|--|------------|
| CHK | DATE | CHANGE | REV | REFERENCE | DRWH | NAME | |
| DLV1 | 18SEP09 | INITIAL RELEASE. | A | 61229V | 310615 | CIRCUIT DIAGRAM, 42/43/44/85/8600 & 73/74/7500 | |
| | | | | | RELEASE NO. | DATE | PART NO. |
| | | | | | 61229V | 18MAX09 | AE08058176 |
| | | | | | | | 001 |

Figure 1 Abbreviations

4.32. EATON VORAD COLLISION AVOIDANCE SYSTEM VS400 (CONT.), P. 27B

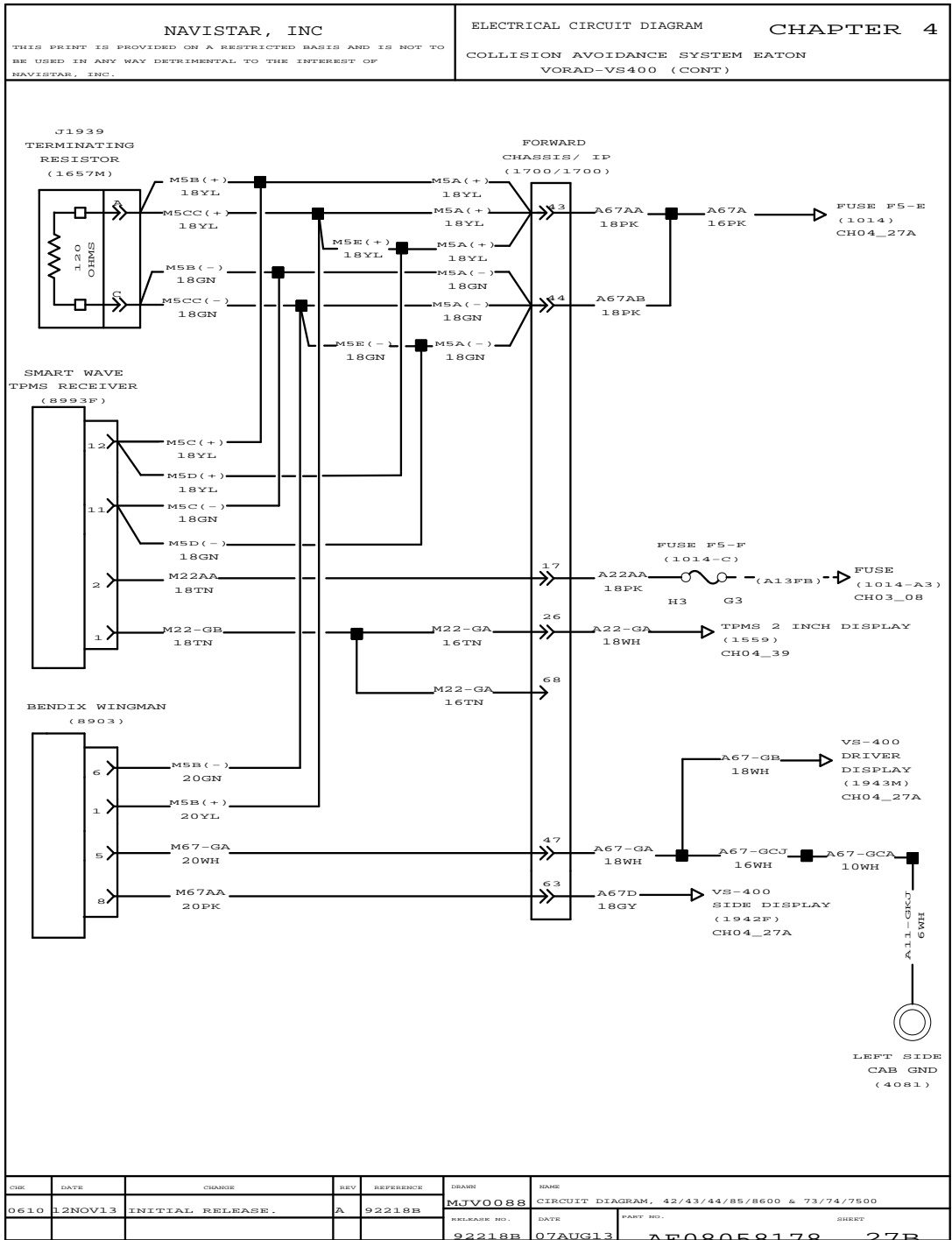


Figure 134 Eaton Vorad Collision Avoidance System VS400 (Cont.)

4.51. DUAL POWER TAKE OFF, P. 40

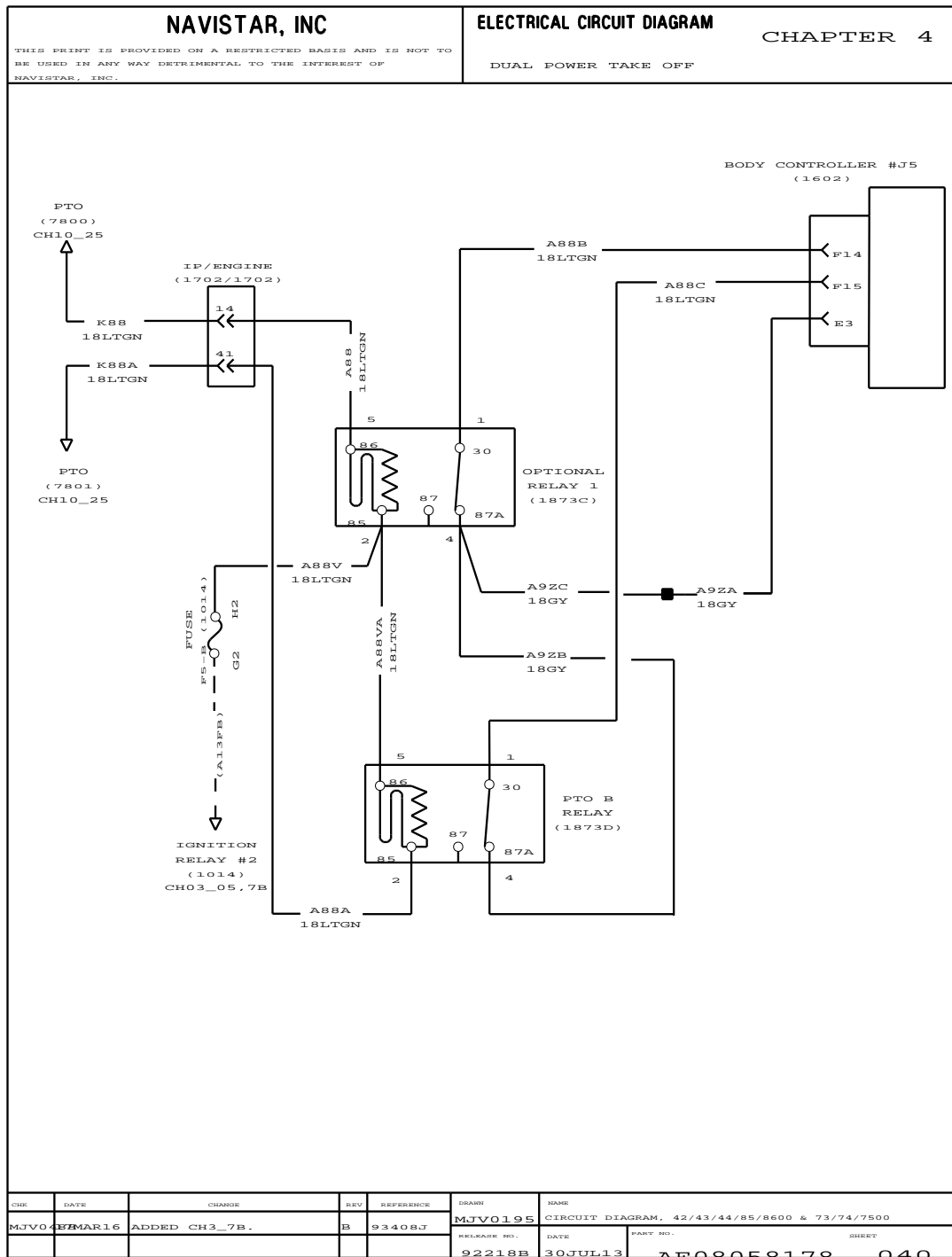


Figure 153 Dual Power Take Off

4.55. BENDIX WINGMAN SYSTEM, P. 44

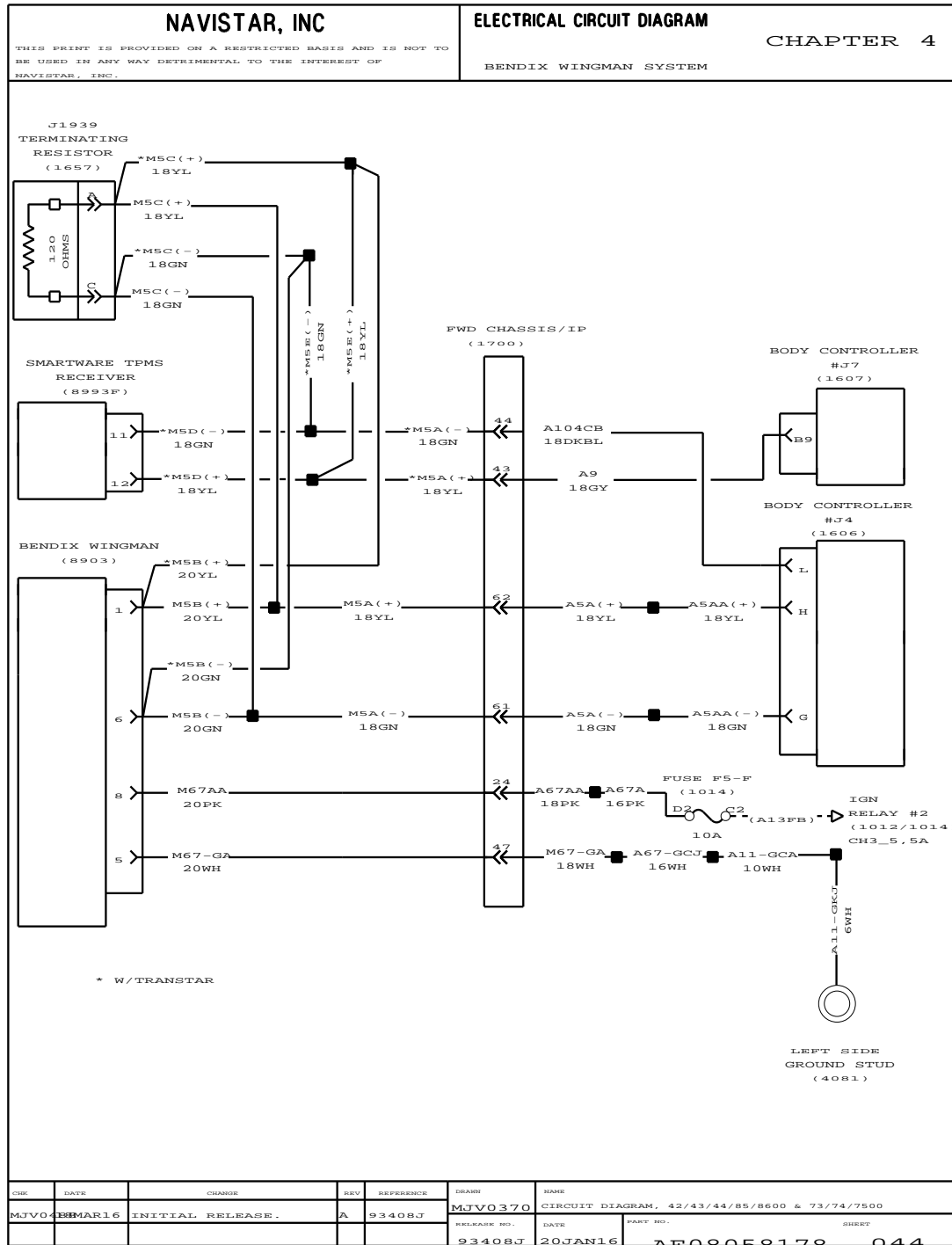


Figure 157 Bendix Wingman System

7.20. ELECTRONIC ENGINE CONTROLS – I6 ENGINE (CONT.) WITH W.I.F., P. 19

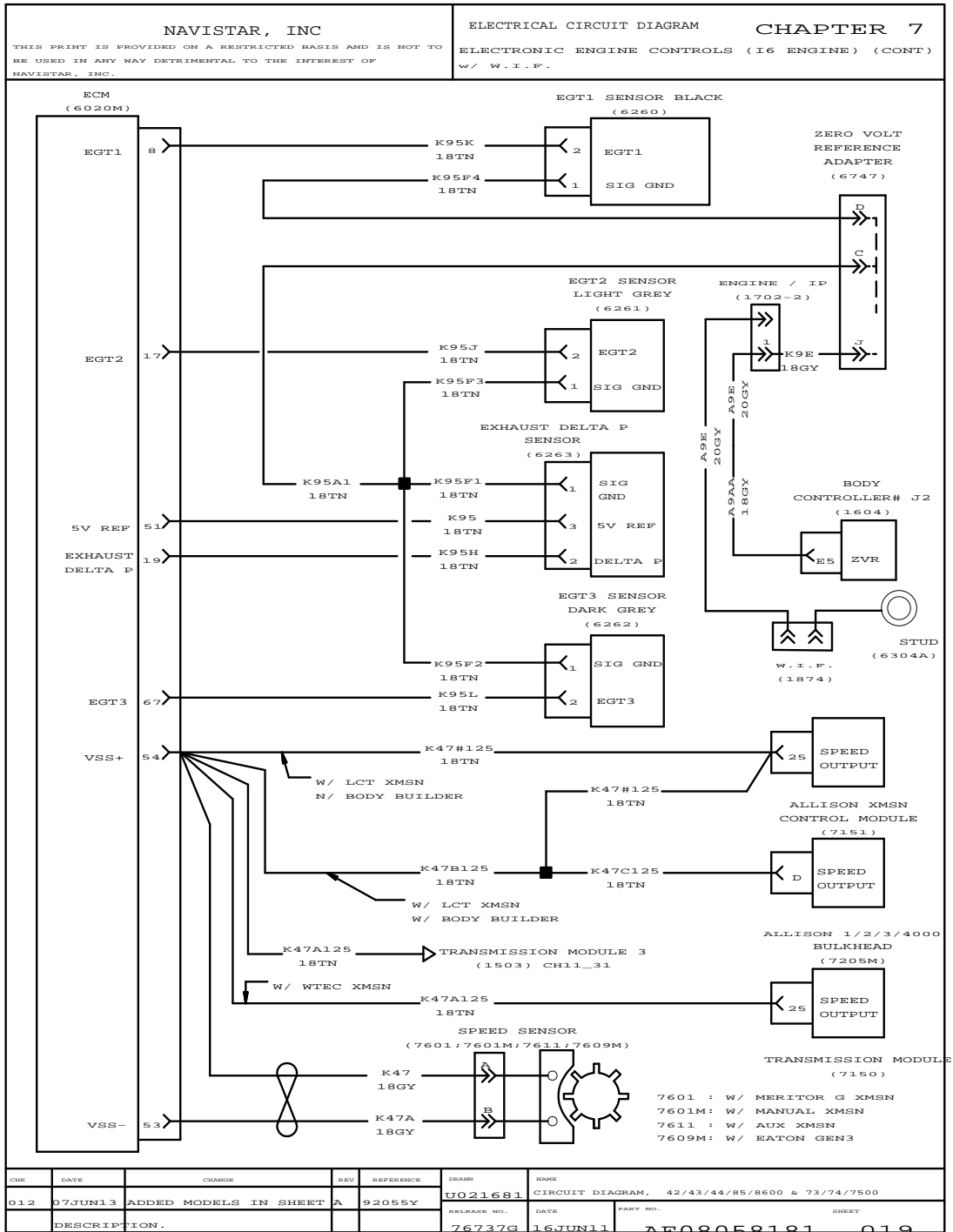


Figure 210 Electronic Engine Controls – I6 Engine (Cont.) with W.I.F.

7.42. ELECTRONICS ENGINE CONTROL (2013 CUMMINS ISB MD), P. 40

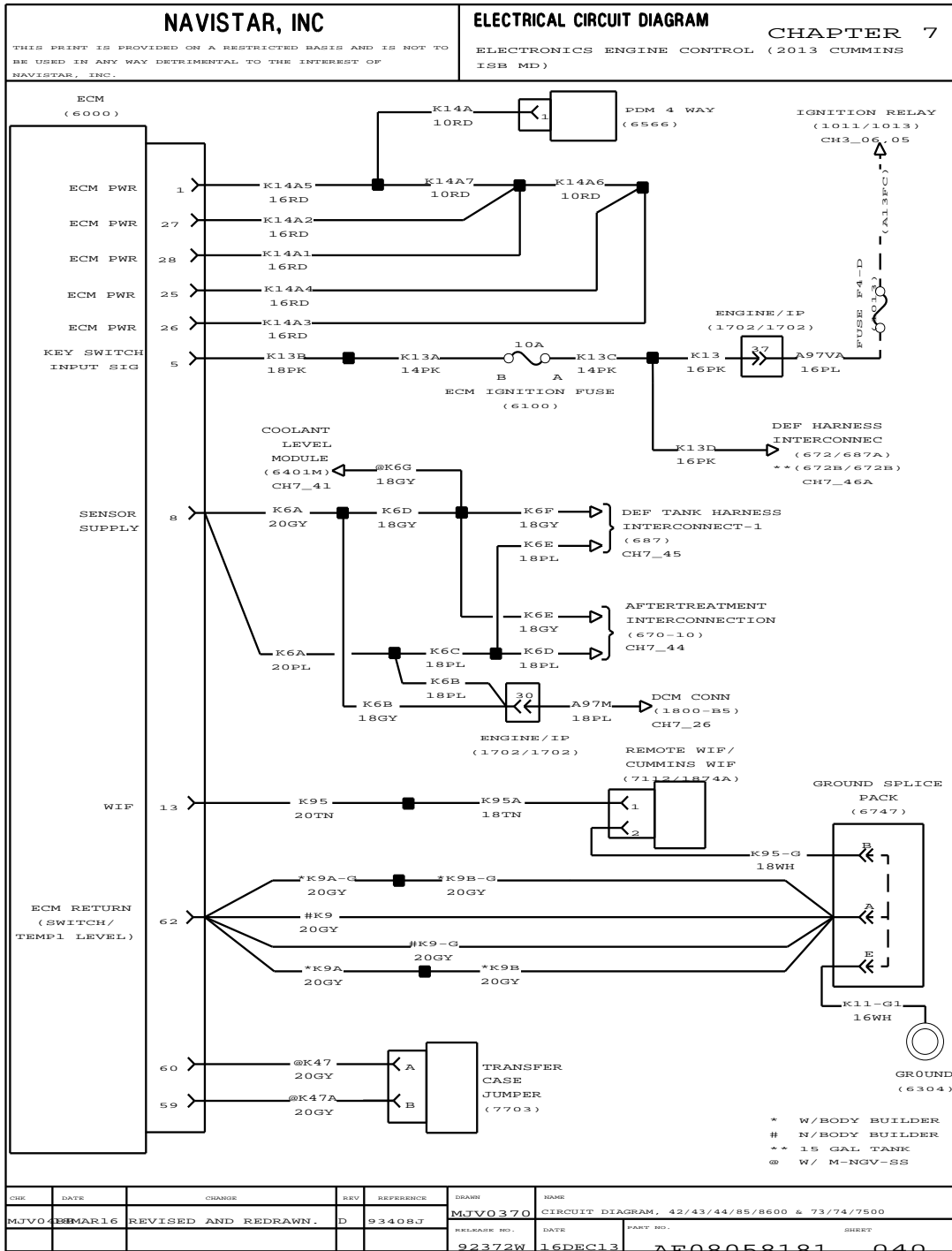


Figure 232 Electronics Engine Control (2013 Cummins ISB MD)

8.5. IP GAUGES AND WARNING LIGHTS — GAUGE CLUSTER, P. 5

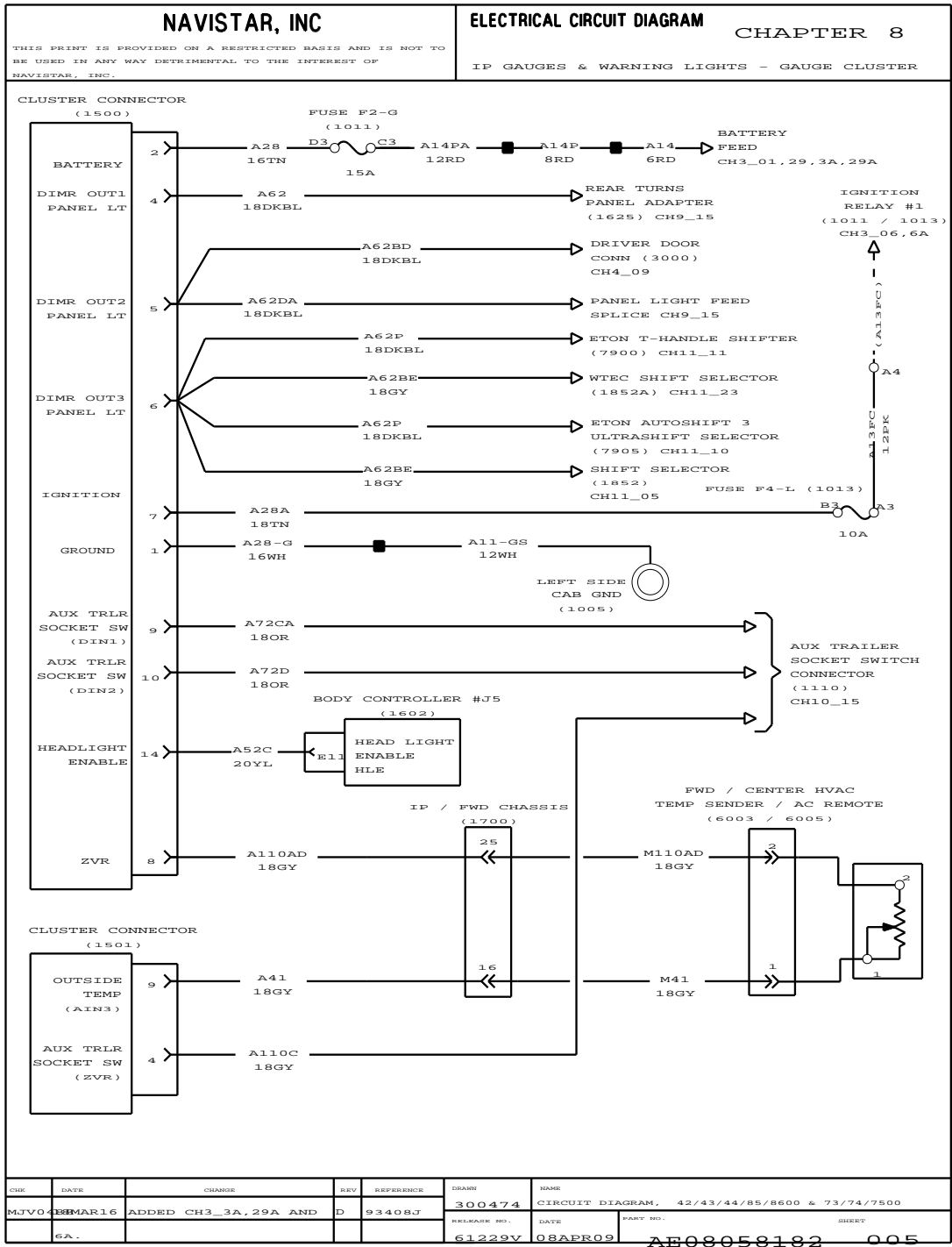


Figure 268 IP Gauges and Warning Lights — Gauge Cluster

9.24. CUSTOMER SUPPLIED LIGHTS, P. 20

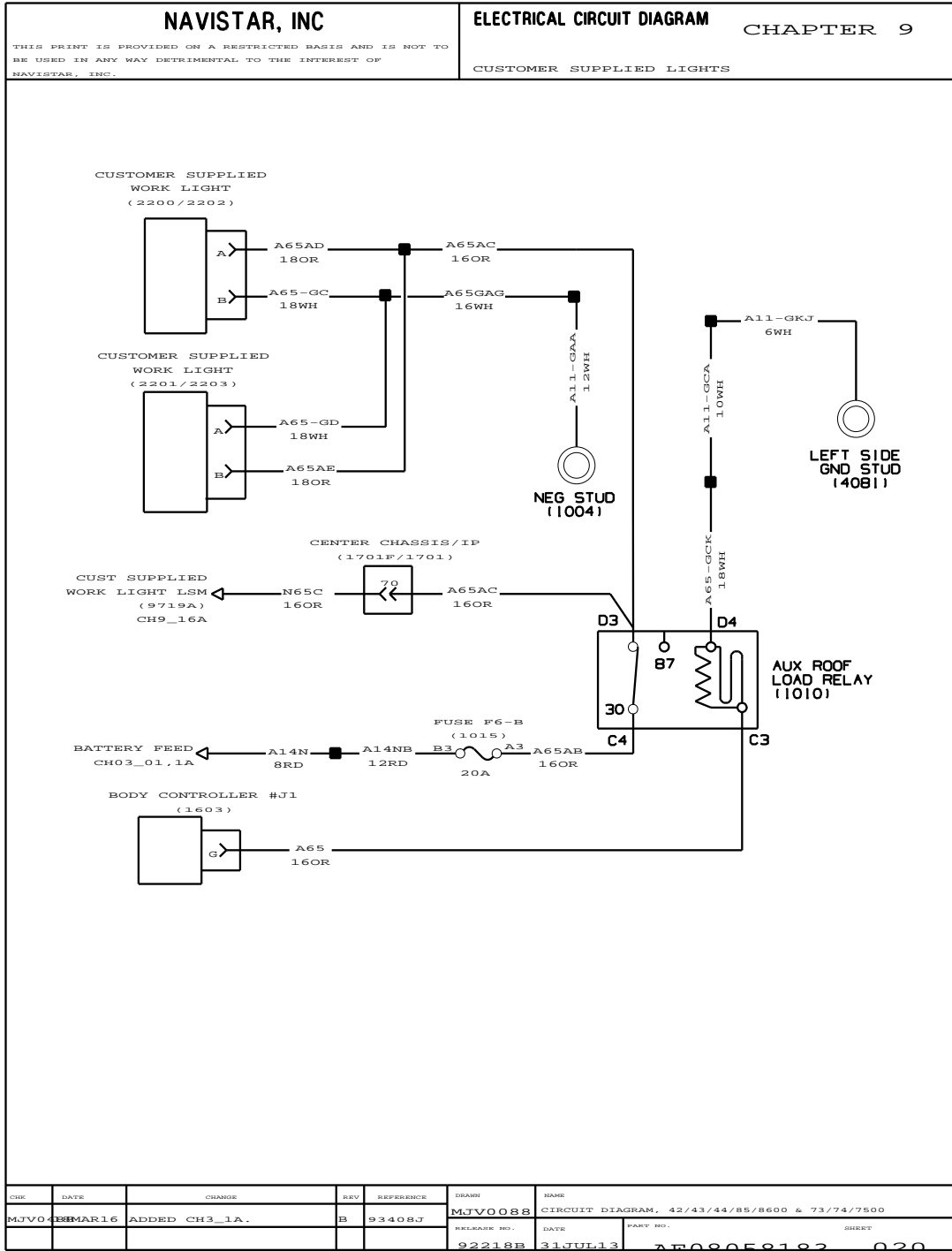


Figure 308 Customer Supplied Lights

10.22. UTILITY BODY CONNECTIONS (CONT.), P. 14E

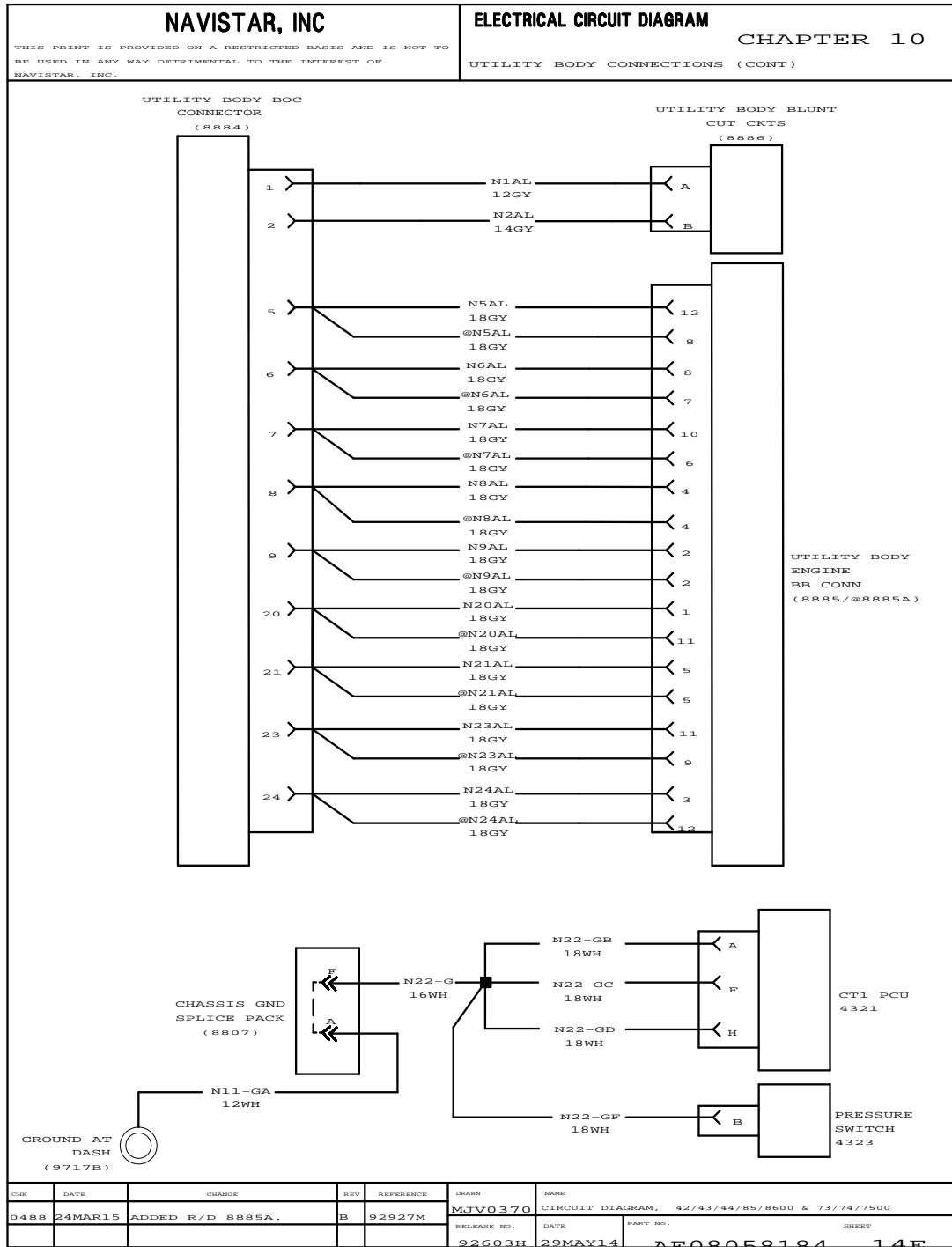


Figure 331 Utility Body Connections (Cont.)

10.53. LIFT AXLE (STEERABLE), P. 32

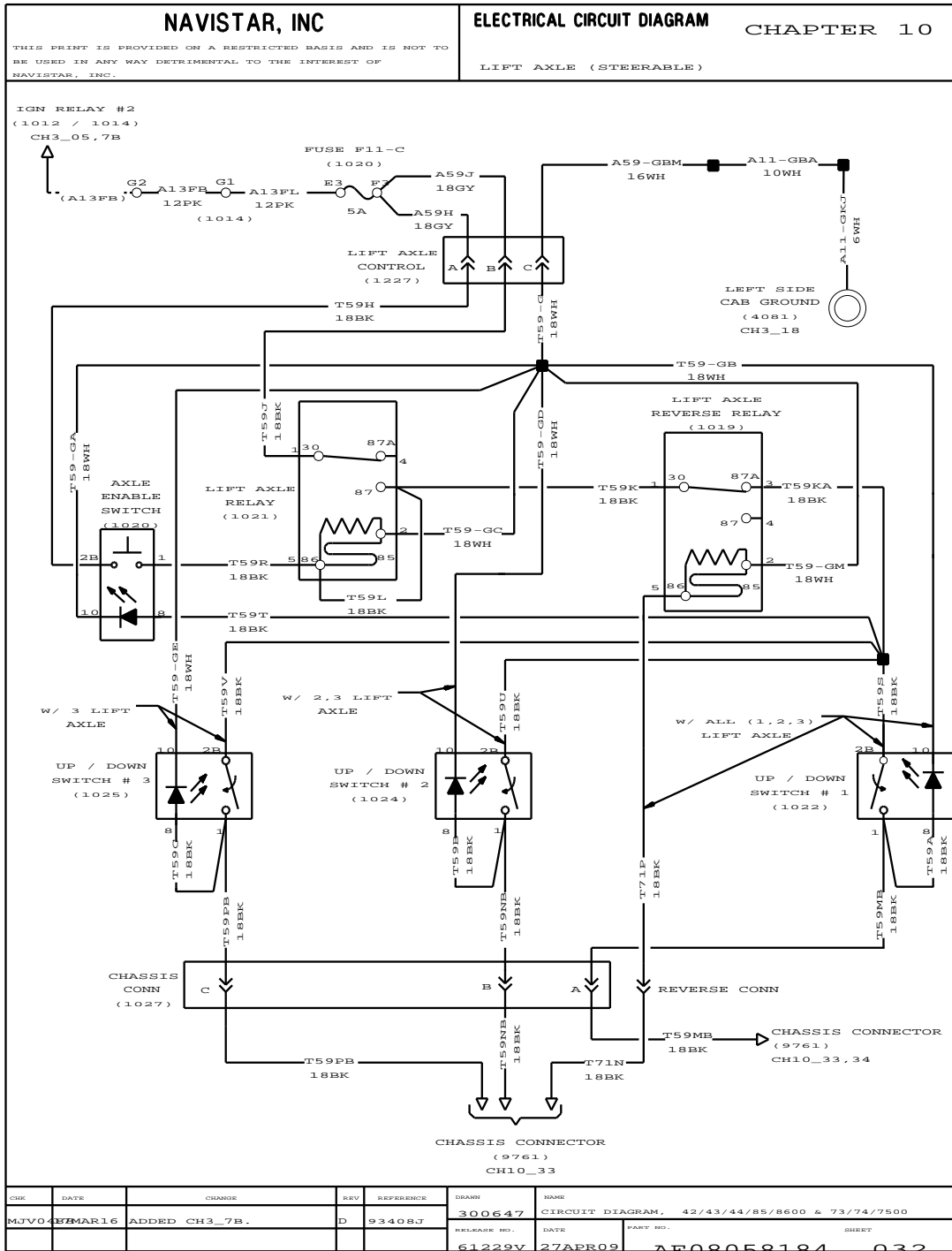


Figure 362 Lift Axle (Steerable)

10.97. BODY BUILDER (B) RELAYS AND FUSES WITH PDM, P. 69

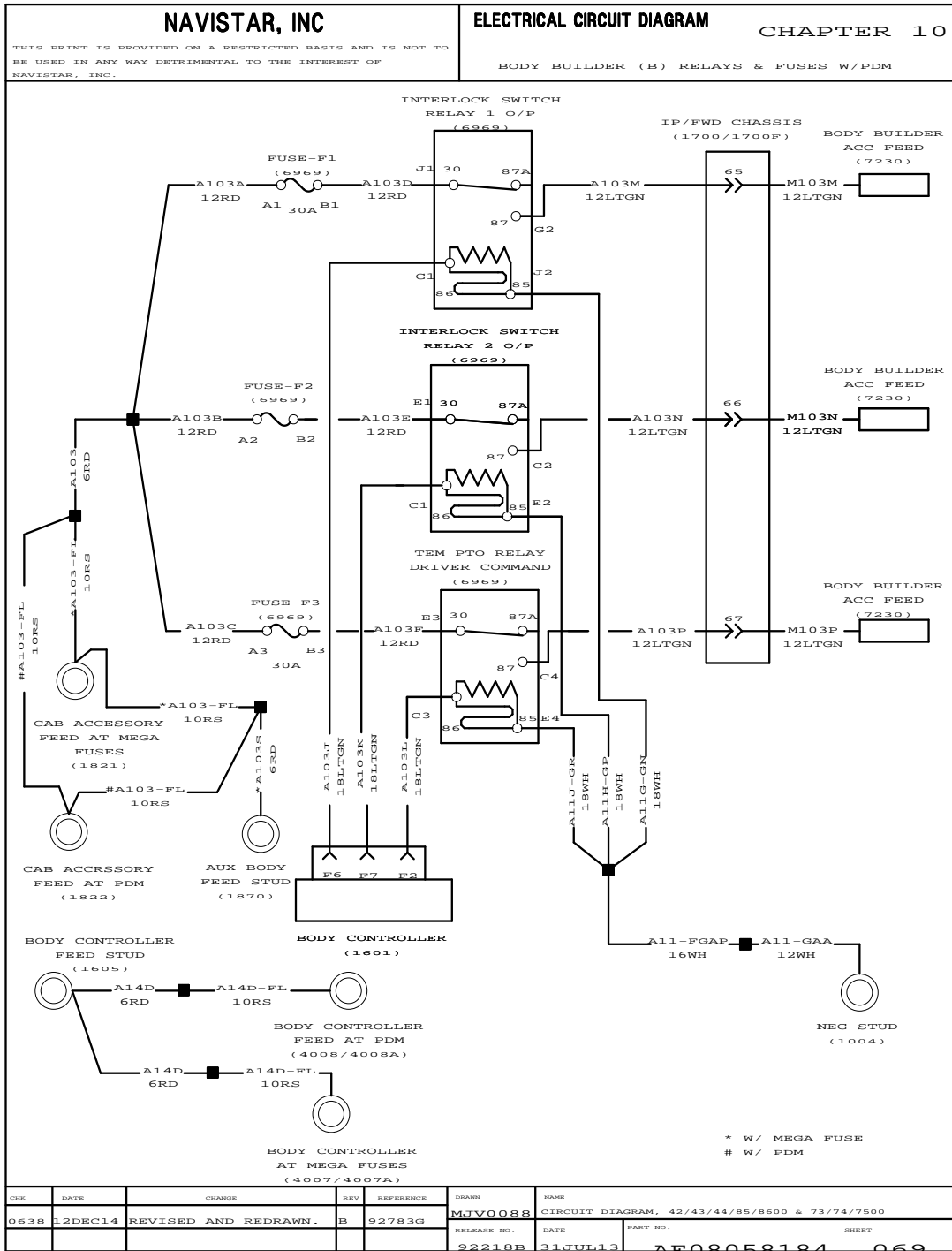


Figure 406 Body Builder (B) Relays and Fuses with PDM

10.104. NEXT GEN HYDRAULIC BRAKES (CONT.), P. 75

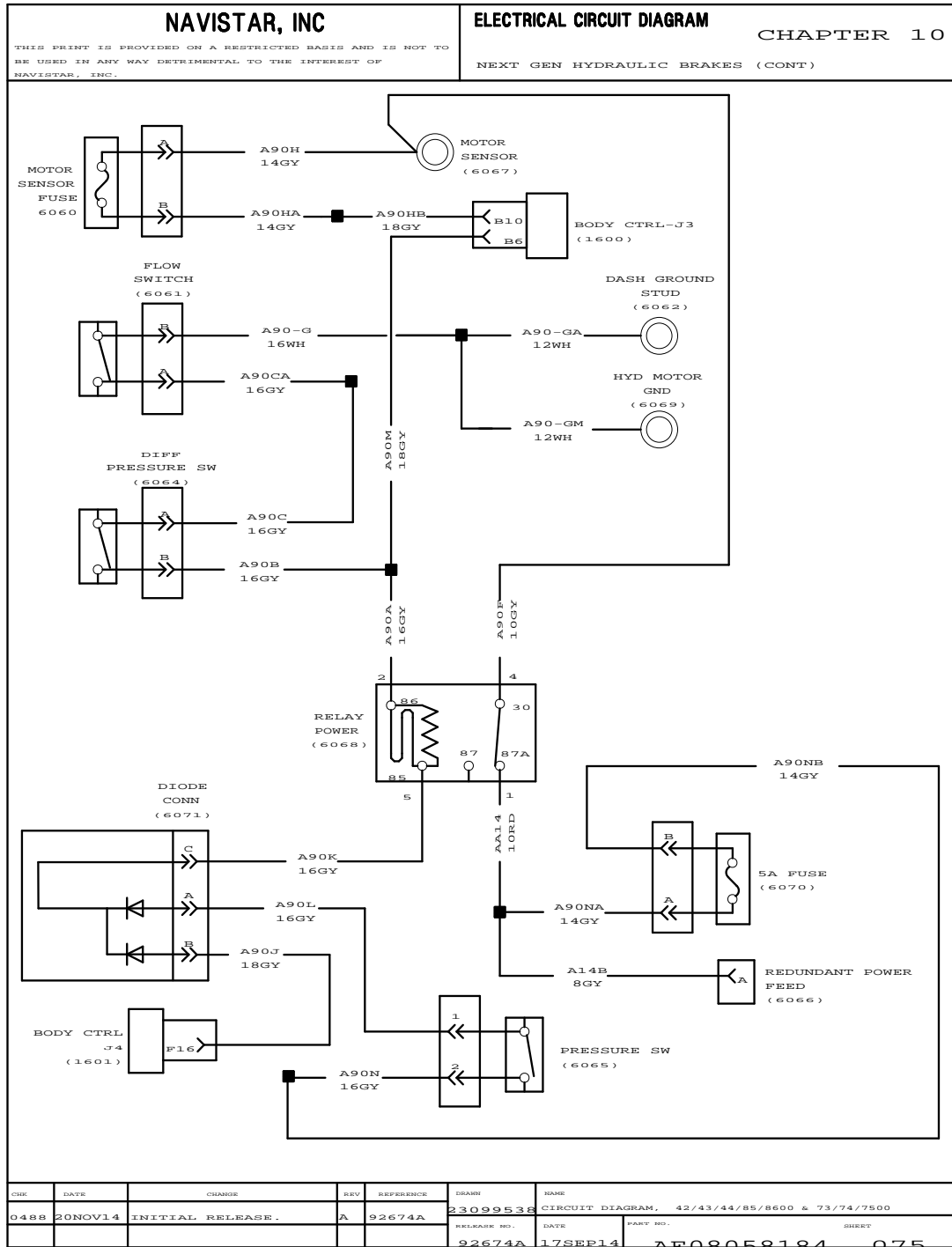


Figure 413 Next Gen Hydraulic Brakes (Cont.)

11.38. TRANSMISSION ALLISON MD 3/4000 WITH I6 AND V8 ENGINE, P. 33

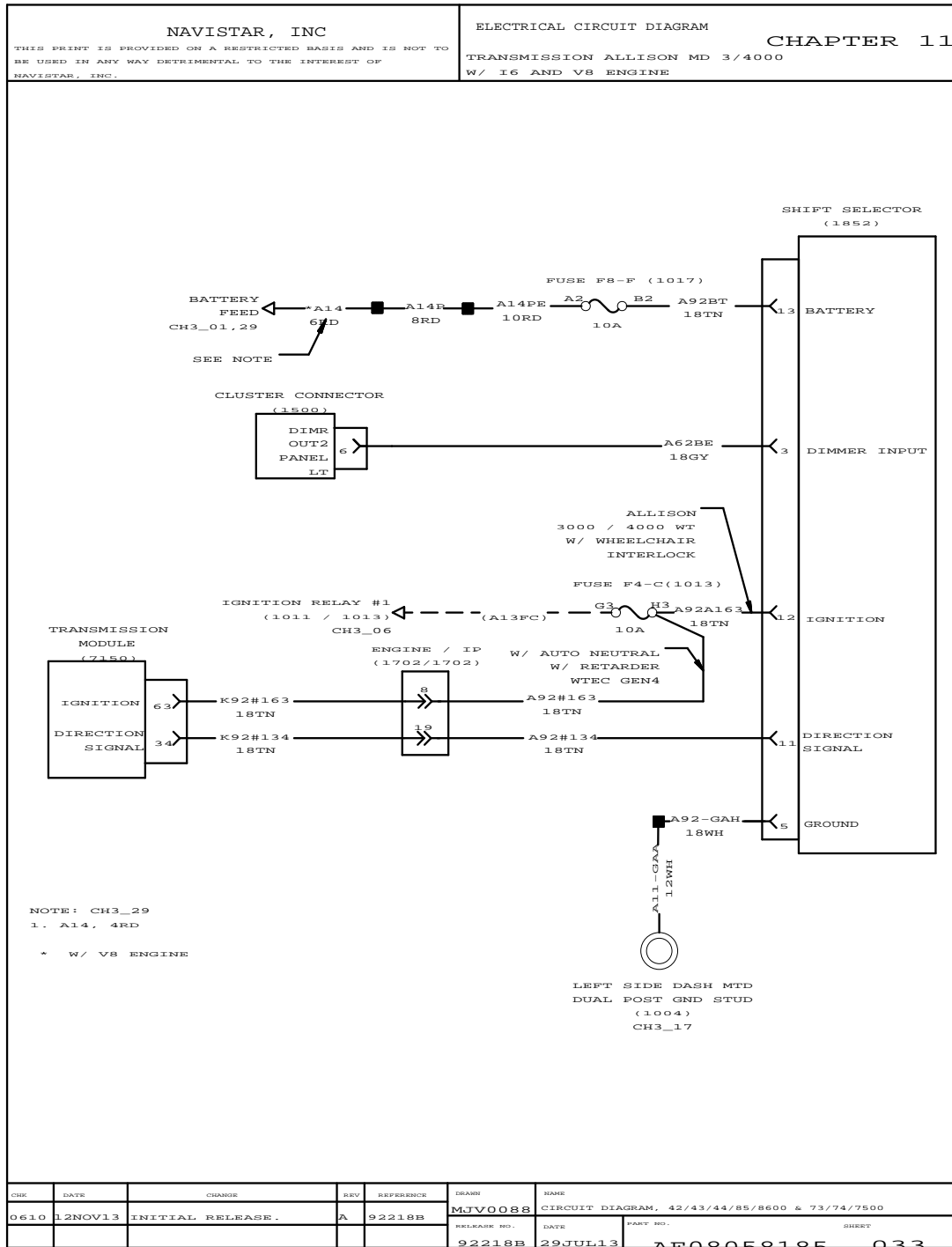


Figure 453 Transmission Allison MD 3/4000 with I6 and V8 Engine

11.71. TRANSMISSION MODULE WITH I6, I-367 ENGINE (CONT.), P. 66

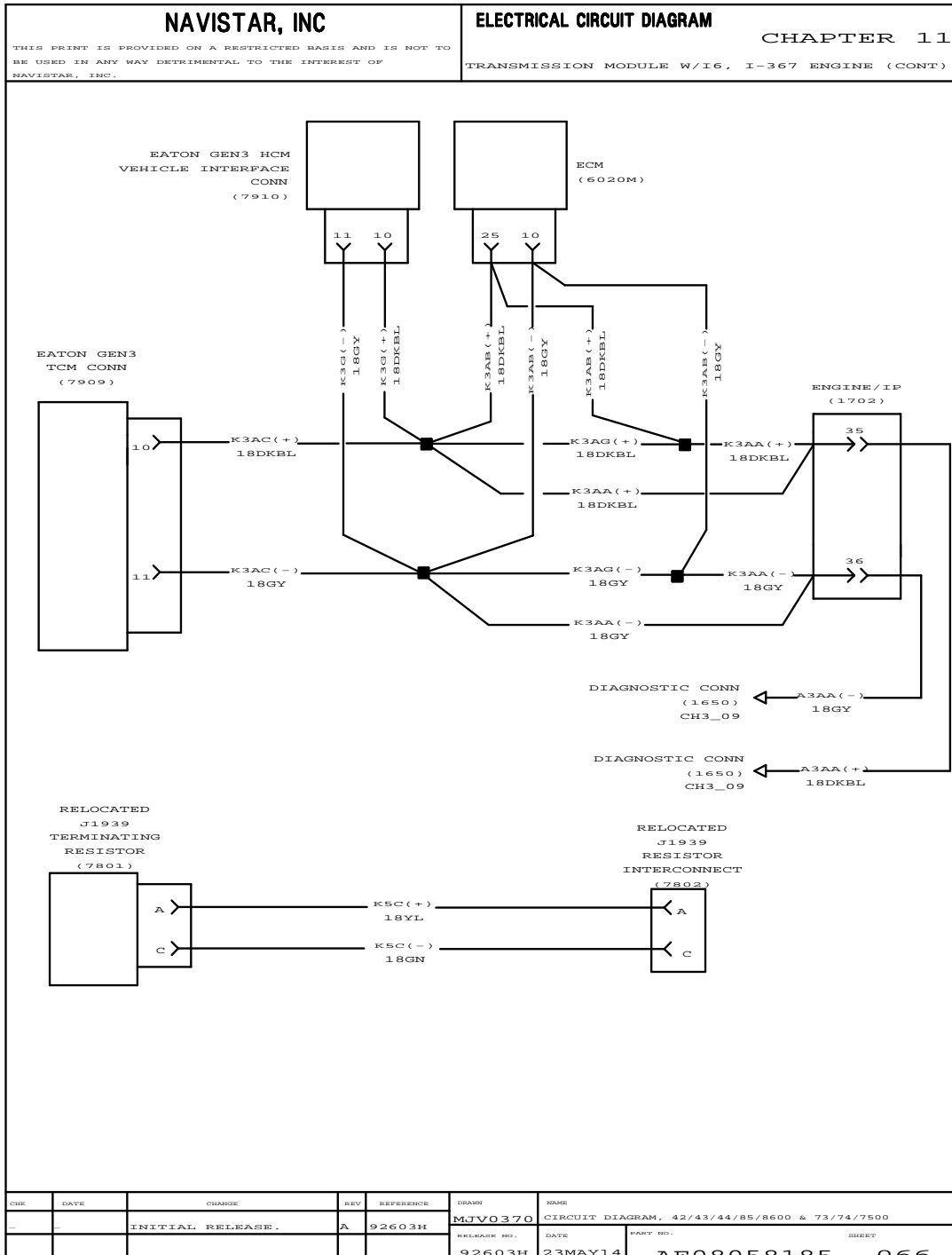


Figure 486 Transmission Module with I6, I-367 Engine (Cont.)

13.43. CONNECTOR COMPOSITES (1023A), (1023B), P. 18

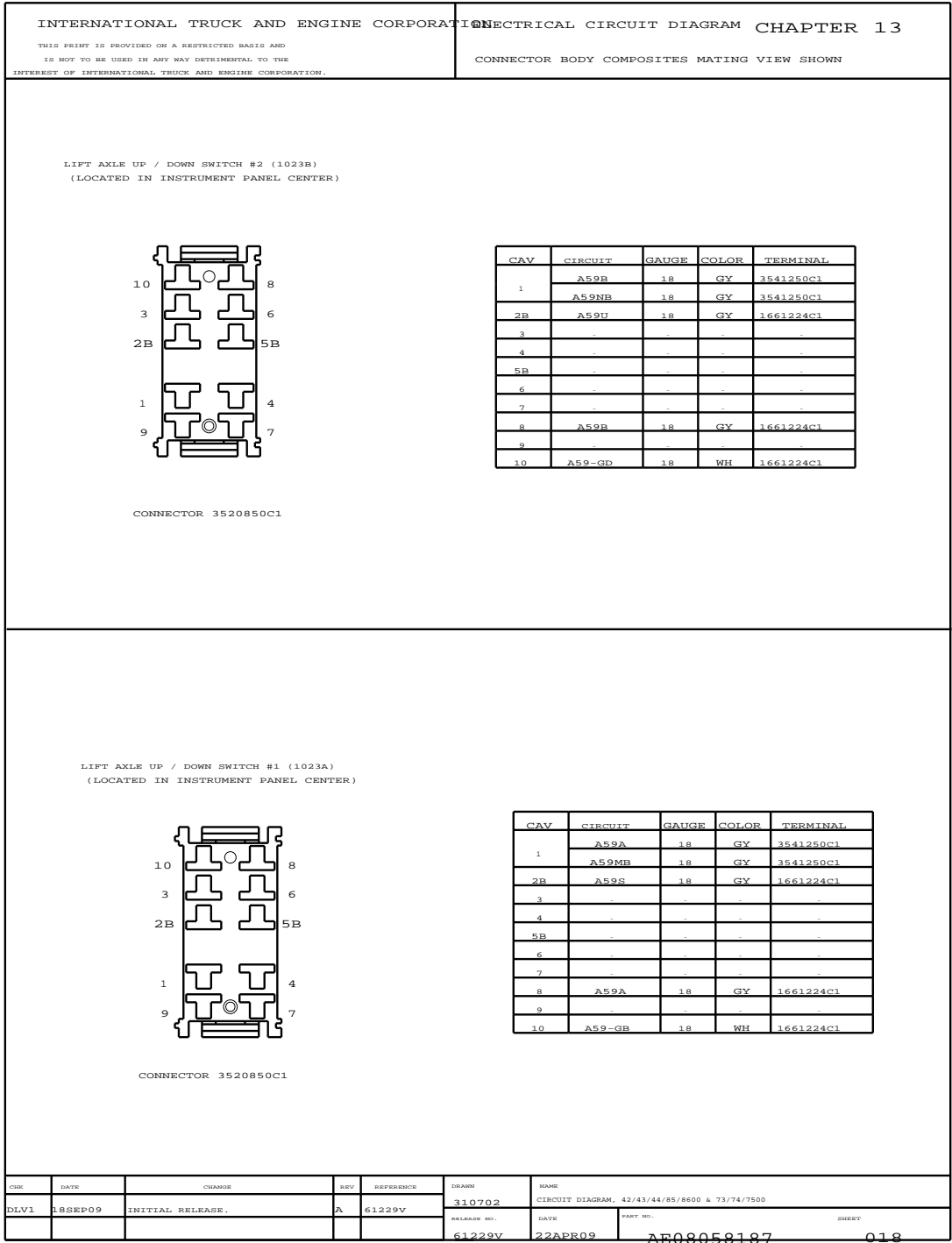


Figure 560 Connector Composites (1023A), (1023B)