

# ELECTRIC WIRE

EL02-001

<b>DIAGRAM.....</b>	<b>EL02-2</b>
HOW TO USE THIS CHAPTER.....	EL02-2
CONTENTS OF DIAGRAMS .....	EL02-7
WIRING DIAGRAM.....	EL02-11
DIAGRAM .....	EL02-12
WIRE TO WIRE CONNECTOR .....	EL02-142
JUNCTION CONNECTOR.....	EL02-161
CONNECTOR LOCATION.....	EL02-167
RELAY LOCATION .....	EL02-240
FUSE AND RELAY BLOCK .....	EL02-242
JUNCTION BLOCK .....	EL02-254
WIRE TO WIRE BOX.....	EL02-258
ELECTRICAL EQUIPMENT BOX.....	EL02-260
CONNECTOR INDEX.....	EL02-261

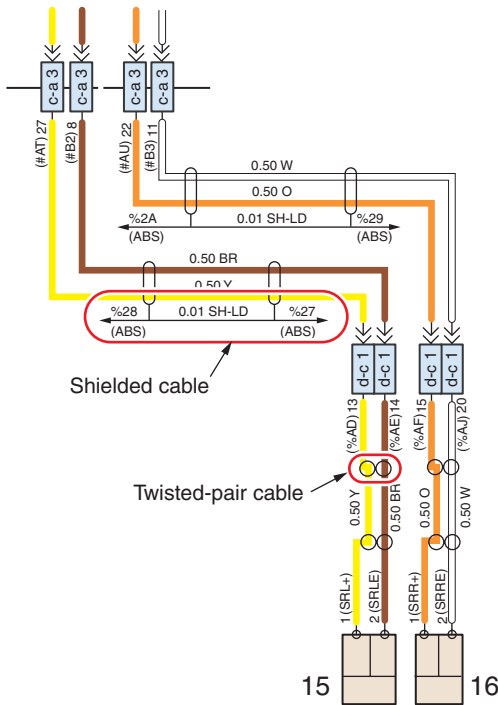
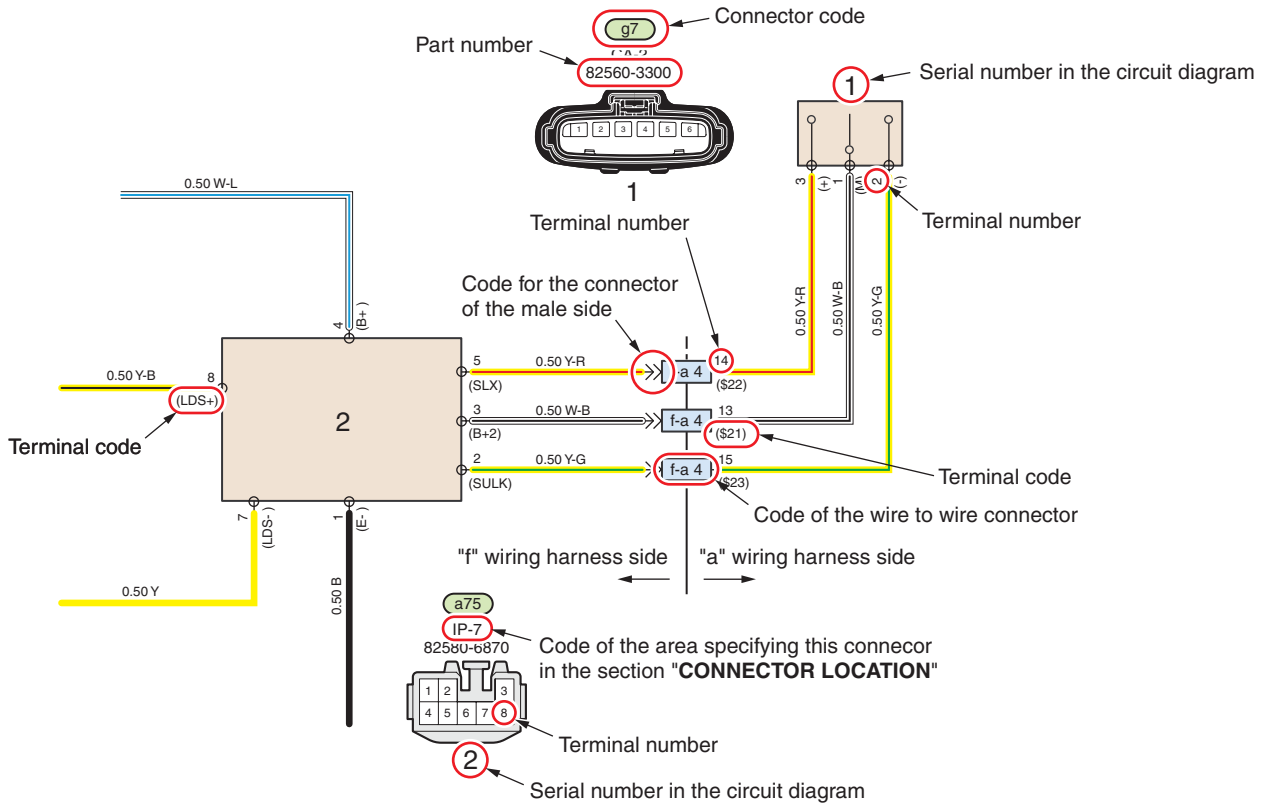
# DIAGRAM

## HOW TO USE THIS CHAPTER

EN12Z1602J100001

### 1. WIRING DIAGRAM

(EXAMPLE)



**Wiring color code**

**3.00 R-Y**      Second letter: Stripe color

Second letter: Stripe color  
 First letter: Ground wire color  
 Arabic numerals: Cross sectional area of wire  
 ※ Example: 3.00 indicates 3 mm<sup>2</sup> {0.0047 in.<sup>2</sup>}

— B: Black	— W: White
— BR: Brown	— Y: Yellow
— G: Green	— V: Violet
— L: Blue	— O: Orange
— LG: Light Green	— GR: Gray
— R: Red	— P: Pink

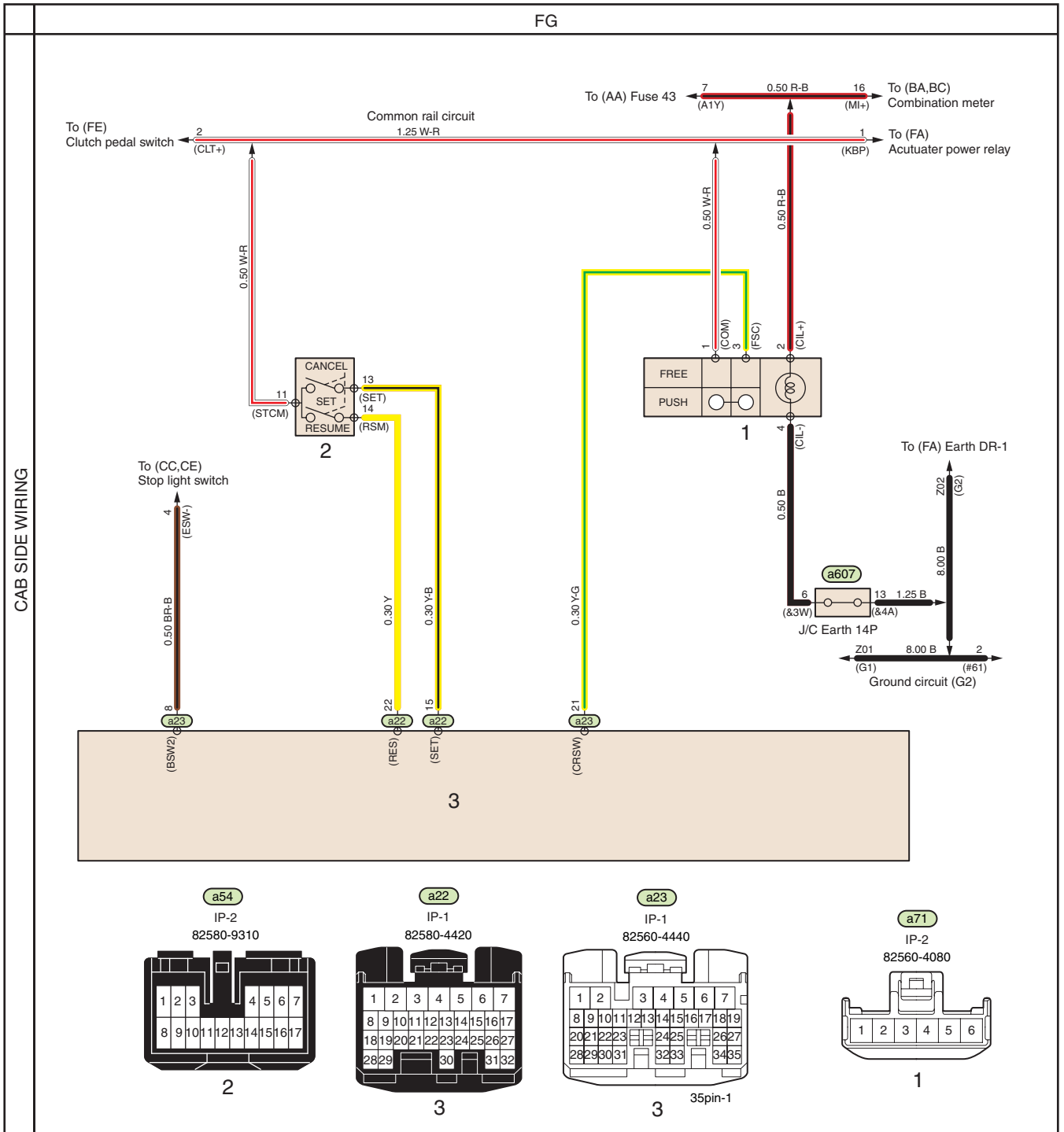
# WIRING DIAGRAM

EN12Z1602J100003

## NOTICE

There is a case that the circuit diagrams in this section are different from that for your vehicle due to the model or specification.

WIRING HARNESS CODE		
CODE	NAME	
a	Cab main wiring harness	CAB MAIN W/H
b	Front RH wiring harness	Fr-RH W/H
c	Front LH wiring harness	Fr-LH W/H
d	Intermediate wiring harness	INT W/H
e	Rear wiring harness	Rr W/H
f	Instrument panel wiring harness	INST W/H
g	Instrument panel switch wiring harness	INST SW W/H
h	Dash panel wiring harness	DASH W/H
i	Roof wiring harness	ROOF W/H
j	Door LH wiring harness	DOOR LH W/H
k	Door RH wiring harness	DOOR RH W/H
m	Floor wiring harness	FLOOR W/H
n	Headlight short circuit connector	—
o	12V spare power source wiring harness	12V W/H
p	Bonding earth cable	—
ba	Battery cable 1 (Starter to Battery relay)	—
bb	Battery cable 2 (Battery relay to Battery)	—
bc	Battery cable 3 (Battery to Battery)	—
bd	Battery cable 4 (Battery to Ground)	—
ea	Engine wiring harness	ENGINE W/H
ia	Injector sub wiring harness	—
ib	Link-up connector	—
sa	ZF transmission sub wiring harness	T/M W/H
sb	ZF transmission P.T.O. sub wiring harness	P.T.O. W/H
sc	Intake air heater sub wiring harness	I/A HEATER W/H
sd	Headlight sub wiring harness	H/LIGHT W/H
se	Cab tilt sub wiring harness	TILT W/H
sf	Air suspension valve box sub wiring harness	A/S W/H
sg	Brake valve box sub wiring harness	B/C W/H
sh	Side turn signal sub wiring harness	SIDE/F W/H



SHTS12Z160200100

**FG. COMMON RAIL CIRCUIT No.13 (AUTO CRUISE)**

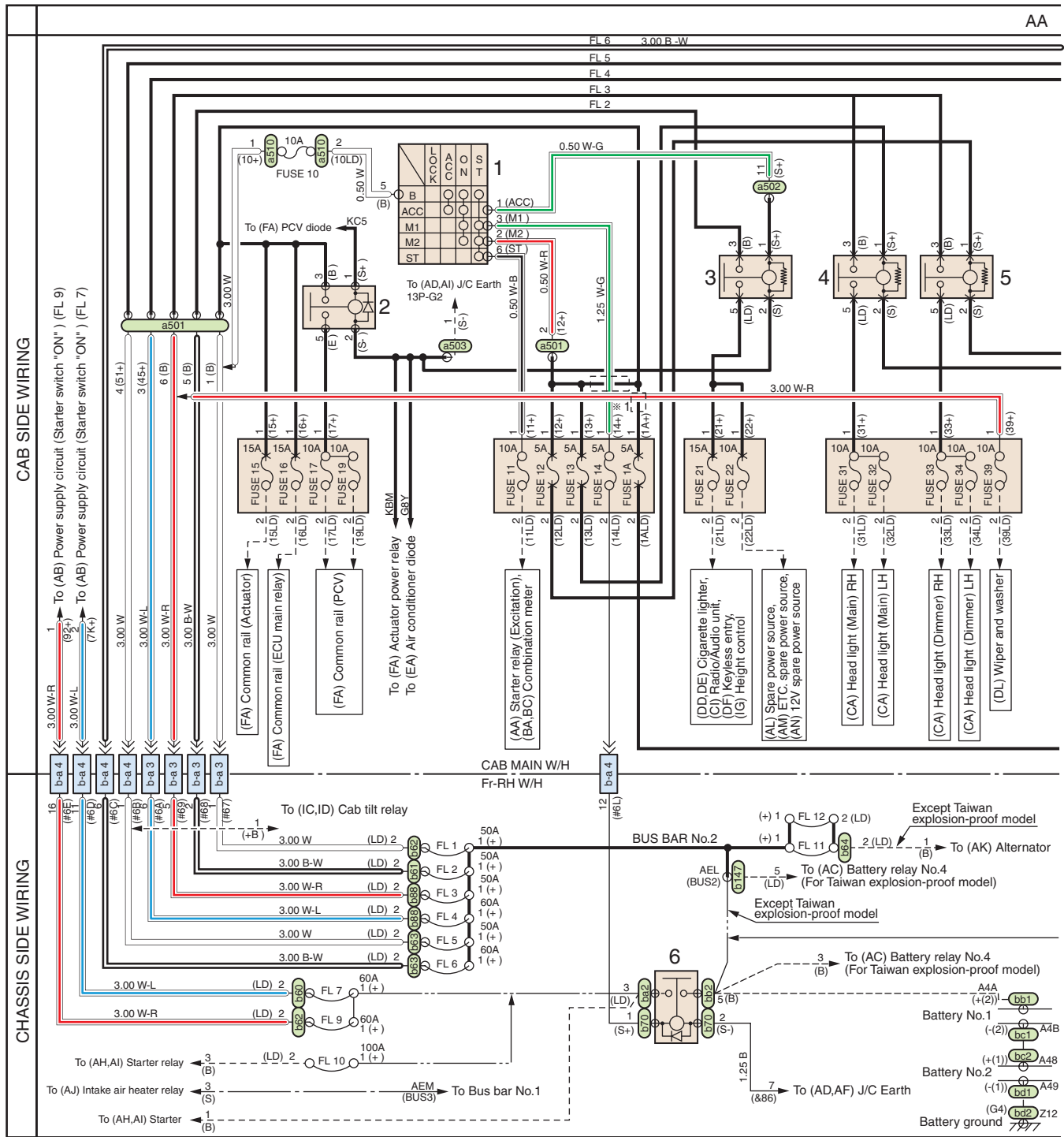
1. Auto cruise main switch
2. Light and turn switch
3. Common rail ECU

# DIAGRAM

EN12Z1602J100004

## NOTICE

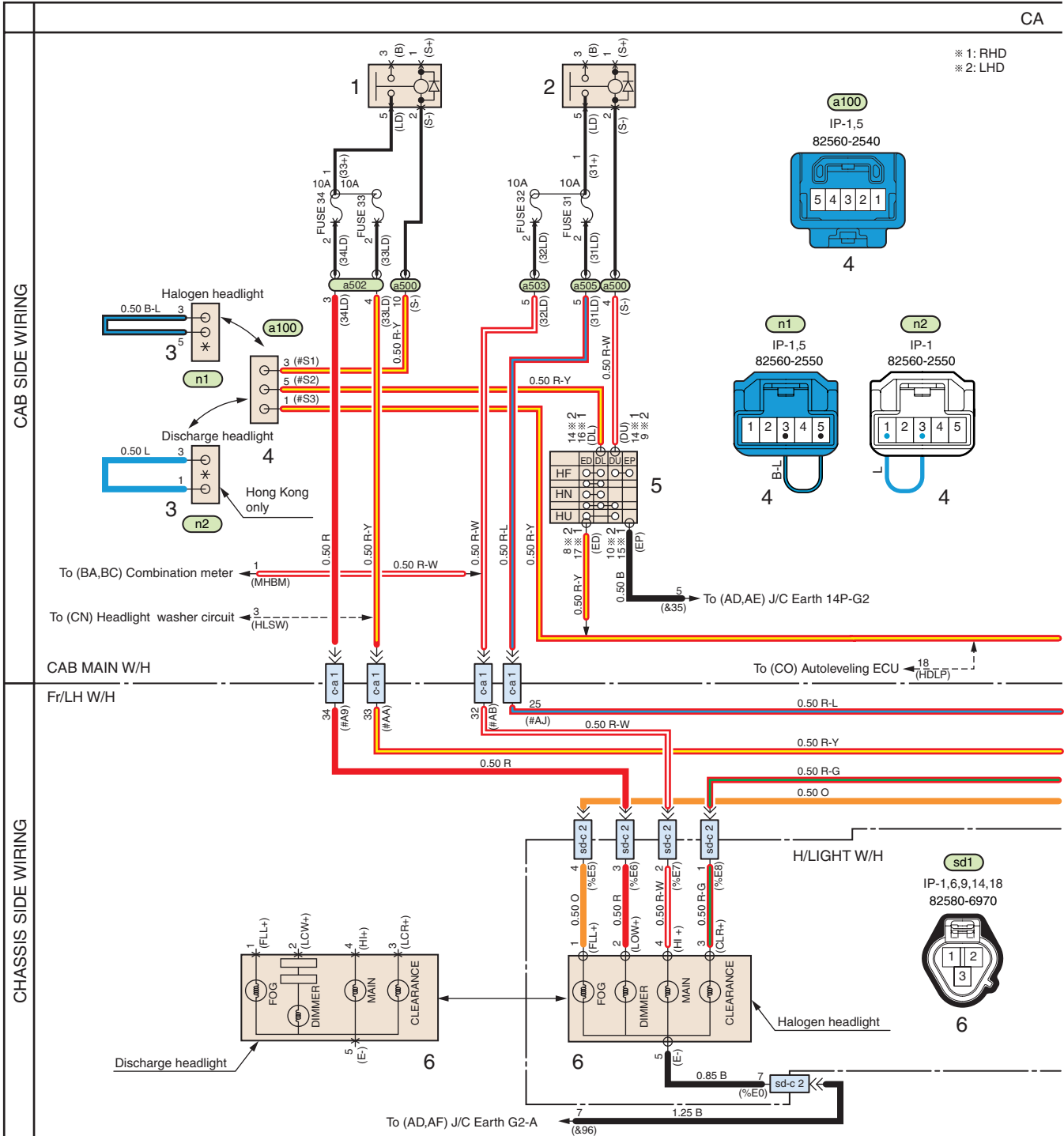
Diagram may differ from the actual wiring according to the vehicle specification.



SHTS12Z160200007

### AA. POWER SUPPLY CIRCUIT (CONTINUOUS POWER SOURCE)

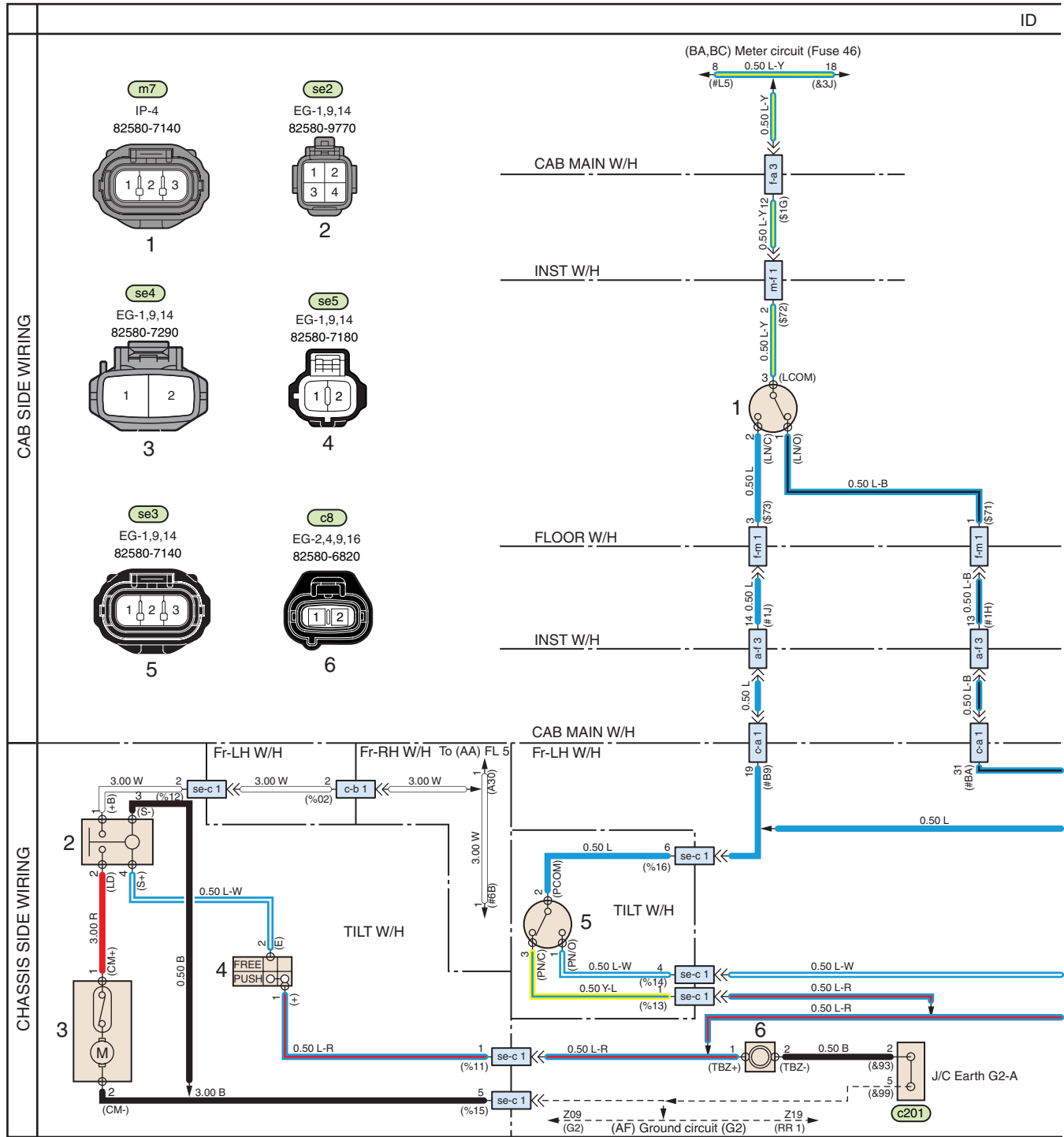
1. Starter switch
2. PCV relay
3. Power accessory relay
4. Headlight relay (Main)
5. Headlight relay (Dimmer)
6. Battery relay
7. Tail light relay No.1
8. Tail light relay No.2
9. Trailer tail light relay (For tractor model)



SHTS12Z160200041

**CA. HEADLIGHT CIRCUIT**

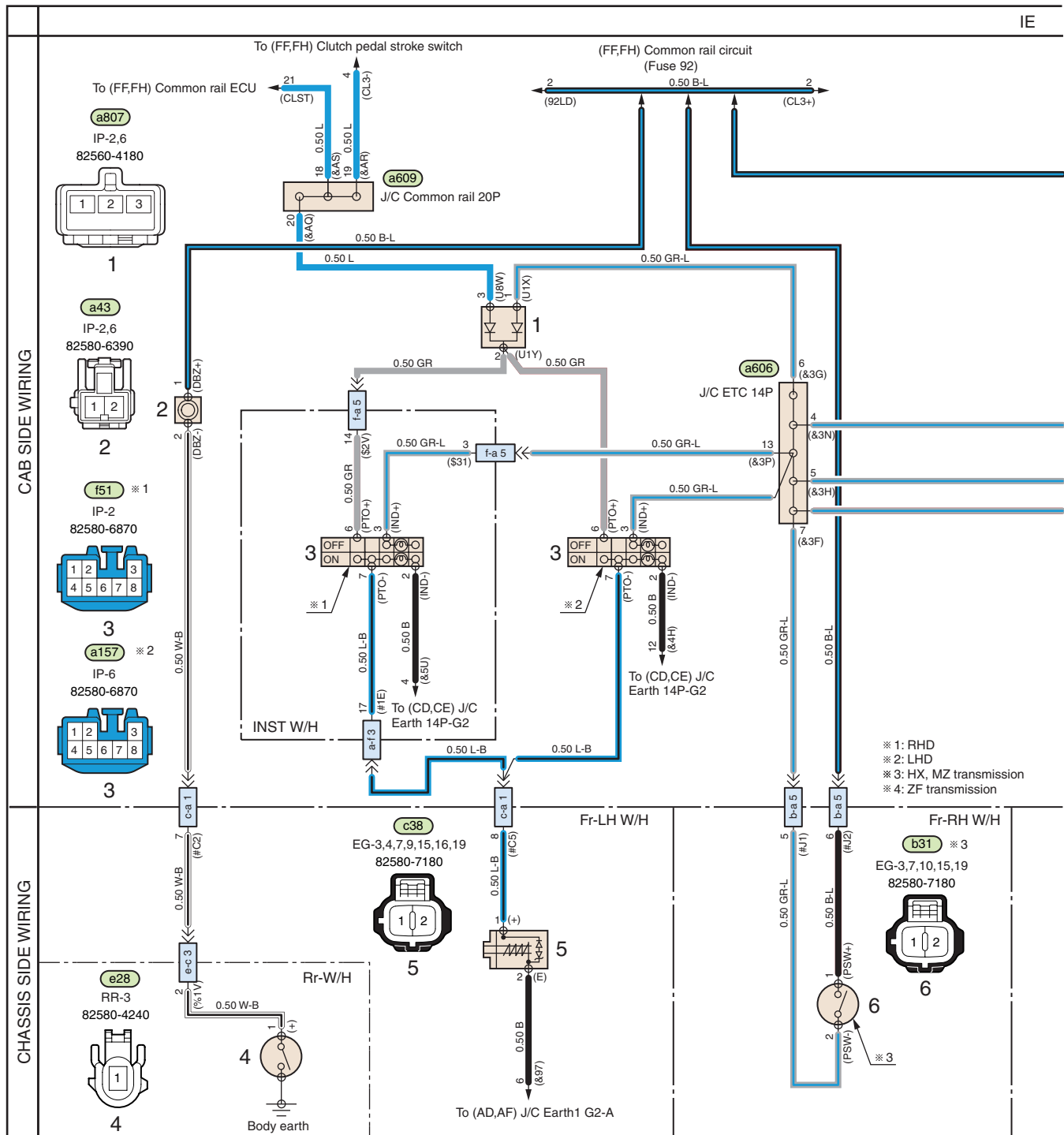
1. Headlight relay (Dimmer)
2. Headlight relay (Main)
3. Headlight short circuit connector
4. Headlight short circuit connector (Cab side)
5. Light and turn switch
6. Headlight LH
7. Tail light relay No.1
8. Tail light relay No.2
9. Cornering light diode
10. Headlight RH



SHTS12Z160200123

**ID. CAB TILT CIRCUIT (MODELS WITH ZF AND EATON TRANSMISSION)**

1. Cab tilt lock switch
2. Cab tilt relay
3. Cab tilt motor
4. Cab tilt switch
5. Cab tilt position switch
6. Cab tilt buzzer
7. Cab tilt stroke switch
8. Cab tilt stop switch



SHTS12Z160200125

**IE. P.T.O. (POWER TAKE-OFF) CONTROL CIRCUIT**

1. P.T.O. diode
2. Dump warning buzzer
3. Transmission P.T.O. switch
4. Dump up switch
5. P.T.O. magnetic valve
6. P.T.O. position switch (Models with HX and MZ transmission)
7. P.T.O. position switch (Models with ZF transmission)

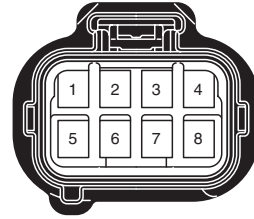


a-k 1 / k-a 1	Cab main wiring harness to Door RH wiring harness 1
AE, CC, CE, DH, DM	CA-3

82560-2670, Black, Male

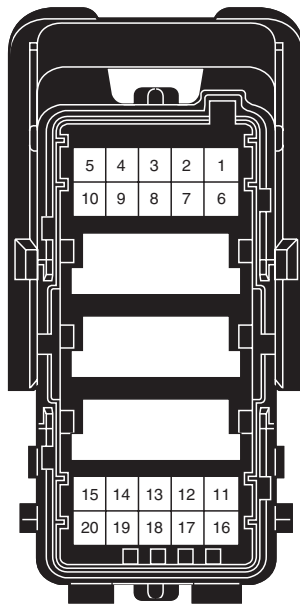


82560-2680, Black, Female

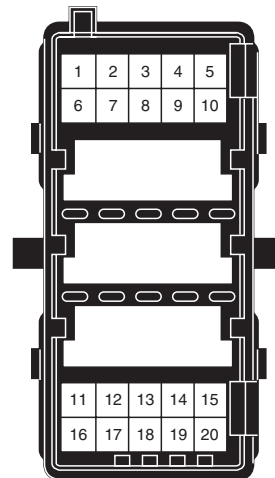


a-ea 1 / ea-a 1	Cab main wiring harness to Engine wiring harness 1
BA, BB, BC, BH, EA, FA, FB, FC, FE	IP-1, 5, EG-1, 6, 9, 14, 18

82560-4520, Black, Male

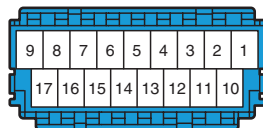


82560-4530, Black, Male

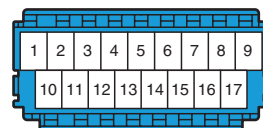


a-ea 2 / ea-a 2	Cab main wiring harness to Engine wiring harness 2
FA, FB, FC	IP-1, 5, EG-1, 6, 9, 14, 18

82560-4540, Blue, Male



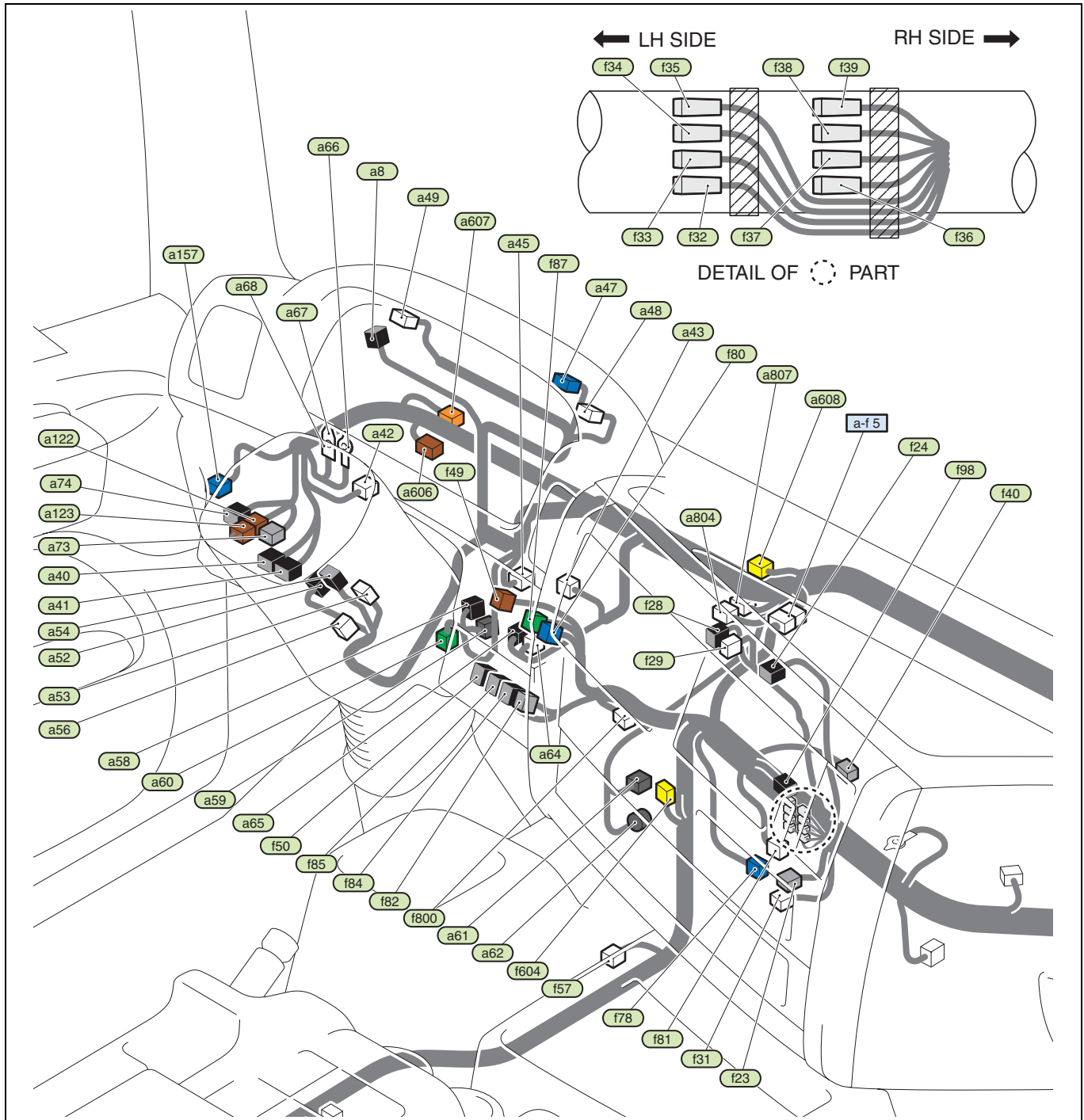
82560-4550, Blue, Female



**ELECTRICAL EQUIPMENT CONNECTOR AND JUNCTION CONNECTOR**

No.	Name	Circuit	No.	Name	Circuit
a8	Front speaker (LH)	DI	a505	Junction block 28P-c	CA, CC, CE, EA, FA, FC
a14	ES start ECU (26 pin)	GD	a507	Junction block 6P	AB
a15	ES start ECU (12 pin)	GD	a609	J/C Common rail 20P	AH, AI, FA, FC, FE, FF, FI, HA, HB, IE
a18	Trailer pick-up controller	CC, CE	a612	J/C Earth 13P G2-a	AD, AE
a19	DC/DC converter (Common rail)	FC	a613	J/C Common rail 13P	FA
a20	Common rail ECU (31 pin)	FA, FC	a614	J/C ETC 13P-1	BA, BC, CH, CI, CJ, CK, DJ
a21	Common rail ECU (35 pin-2)	FA, FC, FE, FI, FJ	a615	J/C ETC 13P-2	CA, CC, CE, CF, FA, FE
a22	Common rail ECU (32 pin)	FA, FE, FF, FG, FI, FJ	a619	J/C CAN	BA, BC, FA, IK, IL
a23	Common rail ECU (35 pin-1)	FA, FC, FD, FE, FF, FG, FI, FJ	a801	Room light diode No.2	CL
a24	Common rail ECU (34 pin)	FA, FC, FI	a808	Brake blending stop diode	CC, CE
a25	Pulse adjust computer	BA, BC	a809	Cornering light diode	CA
a32	ABS ECU (14 pin)	GA, GB, GC	a810	Air conditioner diode	EA
a33	ABS ECU (18 pin)	GA, GB, GC	a814	Brake blending diode	FE
a34	Headlight washer relay	CN	a816	Brake blending resistor	FA
a100	Headlight short circuit connector (Cab side)	CA, CO	a823	Differential lock diode	IL
a102	Common rail 025 wire to wire (Male connector)	AH, AI, BA, BC, FA, FC, FE, GA, GB, GC, GD, HA, HB, IE	f1	DC/DC converter (Leveling)	CB, CO
a103	Common rail 025 wire to wire (Female connector)	AH, AI, BA, BC, FA, FC, FE, GA, GB, GC, GD, HA, HB, IE	f5	Blower motor	EA
a105	Earth AS-1	AD, AE	f13	Lock amp	EA
a106	Earth AS-2	AD, AE	f16	Earth audio	AE, DI
a107	Earth AS-3	AD, AE	f19	Air conditioner unit	EA
a120	Turn signal flasher	CC, CE	f22	Power mirror controller	DN
a121	Wiper relay	DL	f78	Shift buzzer	HB
a167	Autoleveling ECU	CO	f79	Keyless entry door lock controller	DM
a168	Interface ECU	CO	f500	Junction block 1	AL, CL, DD, DF, DI, EA
a169	Chill car idle up	FJ	f501	Junction block 2	AL, AM, EA, FJ
a500	Junction block 32P-a	AA, CA, CC, CE, CG	f502	Junction block 3	AL, AM, DB, DN, EA
a501	Junction block 32P-b	AA, BA, BC, CL, DJ, EA	n1	Headlight short circuit connector (Halogen headlight)	CA
a502	Junction block 32P-c	AA, AL, BA, BC, CA, CC, CE, CF, CN	n2	Headlight short circuit connector (Discharge headlight)	CA
a503	Junction block 28P-a	AA, BA, CA, FA	o1	P12V connector	AN
a504	Junction block 28P-b	AL, BA, BC DG, DL, FA	o4	12V socket	AN

### IP-6 [INSTRUMENT PANEL (2 of 4)] (Models: Left-hand drive)



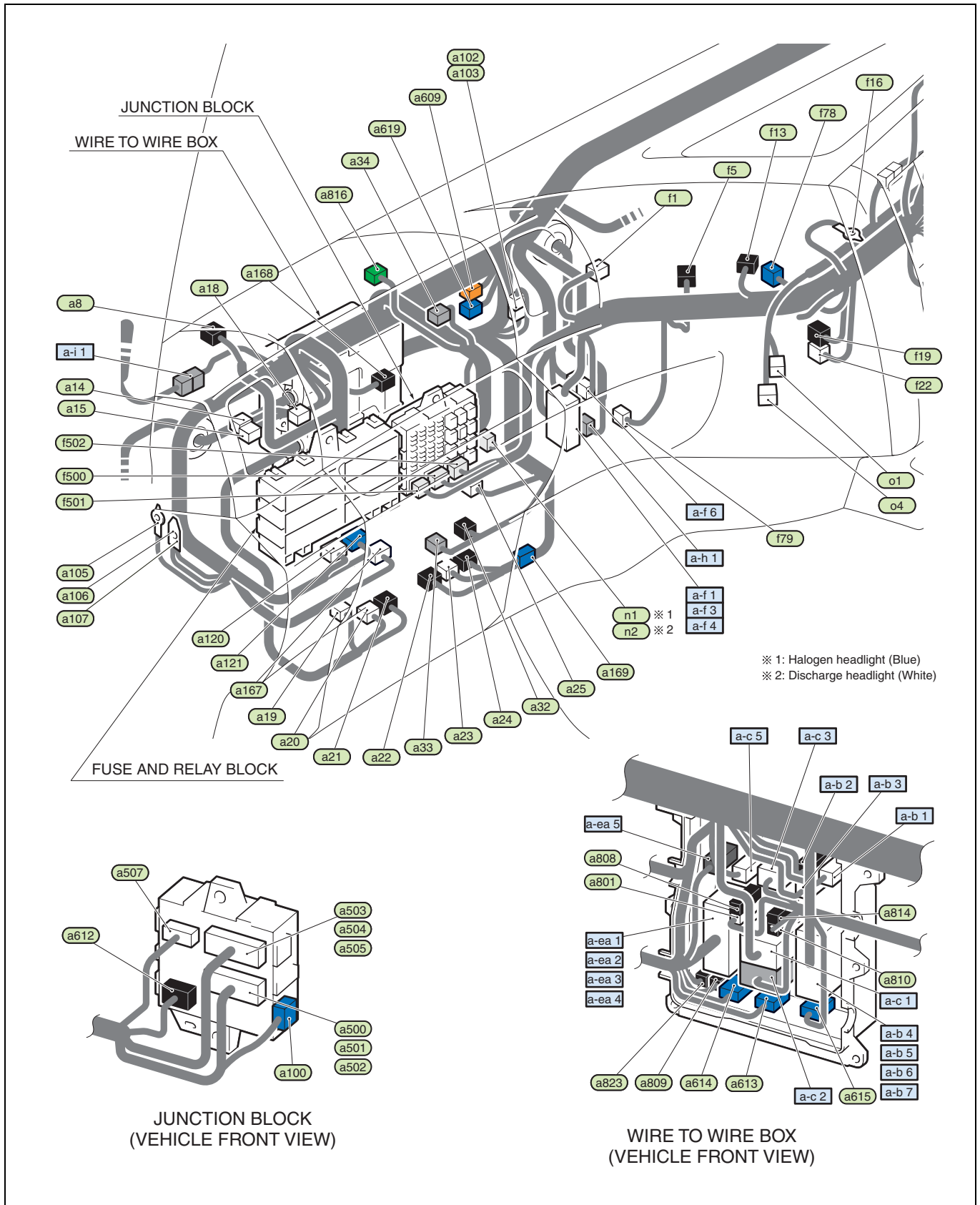
# CONNECTOR LOCATION

EN12Z1602J10007

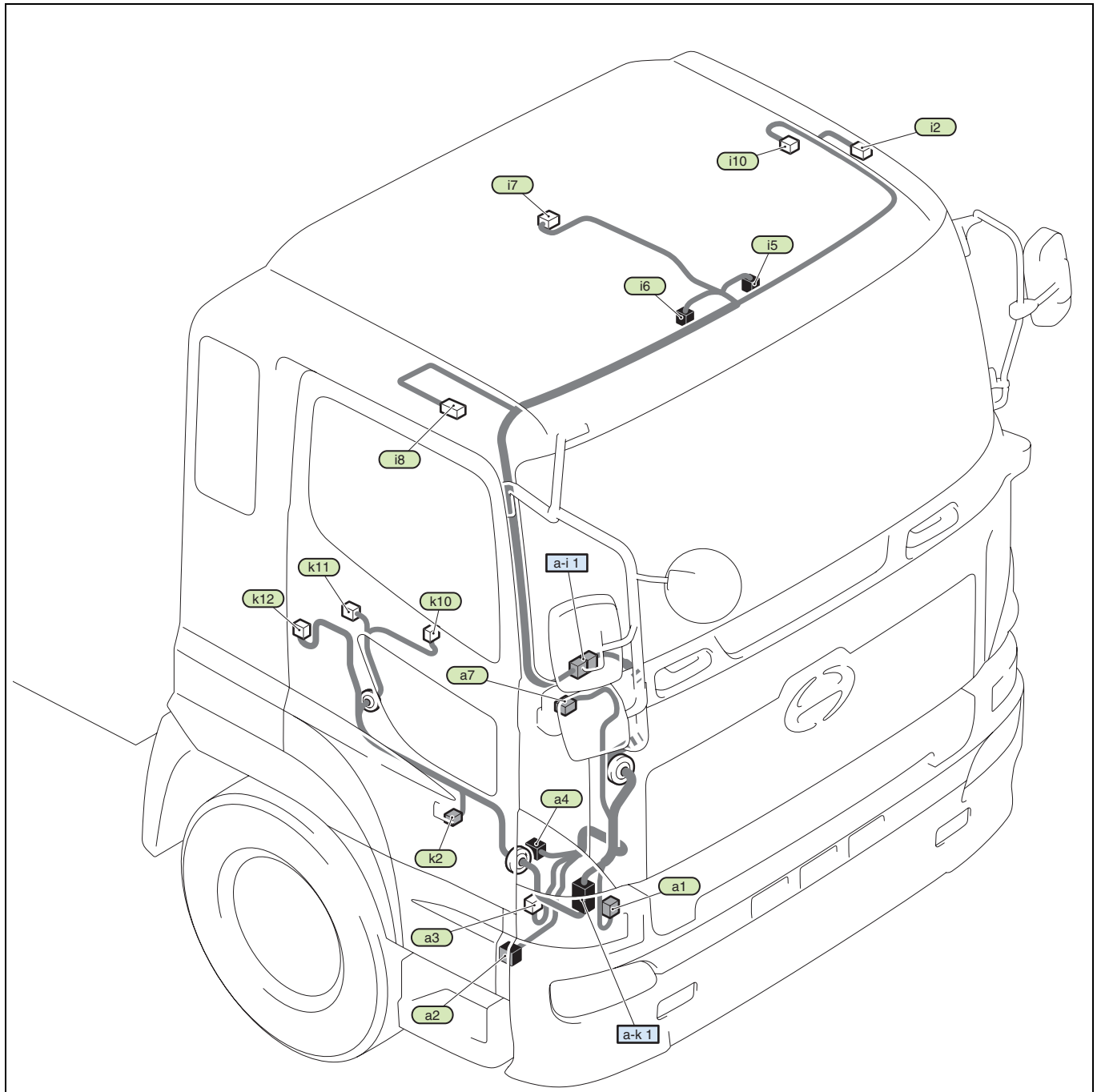
## NOTICE

There is a case that the following figures are different from that for your vehicle in the devices locations due to the model or specification.

### IP-1 [INSTRUMENT PANEL (1 of 4)] (Models: Right-hand drive)



CA-3 [CAB (1 of 2)] (Models: Left-hand drive)



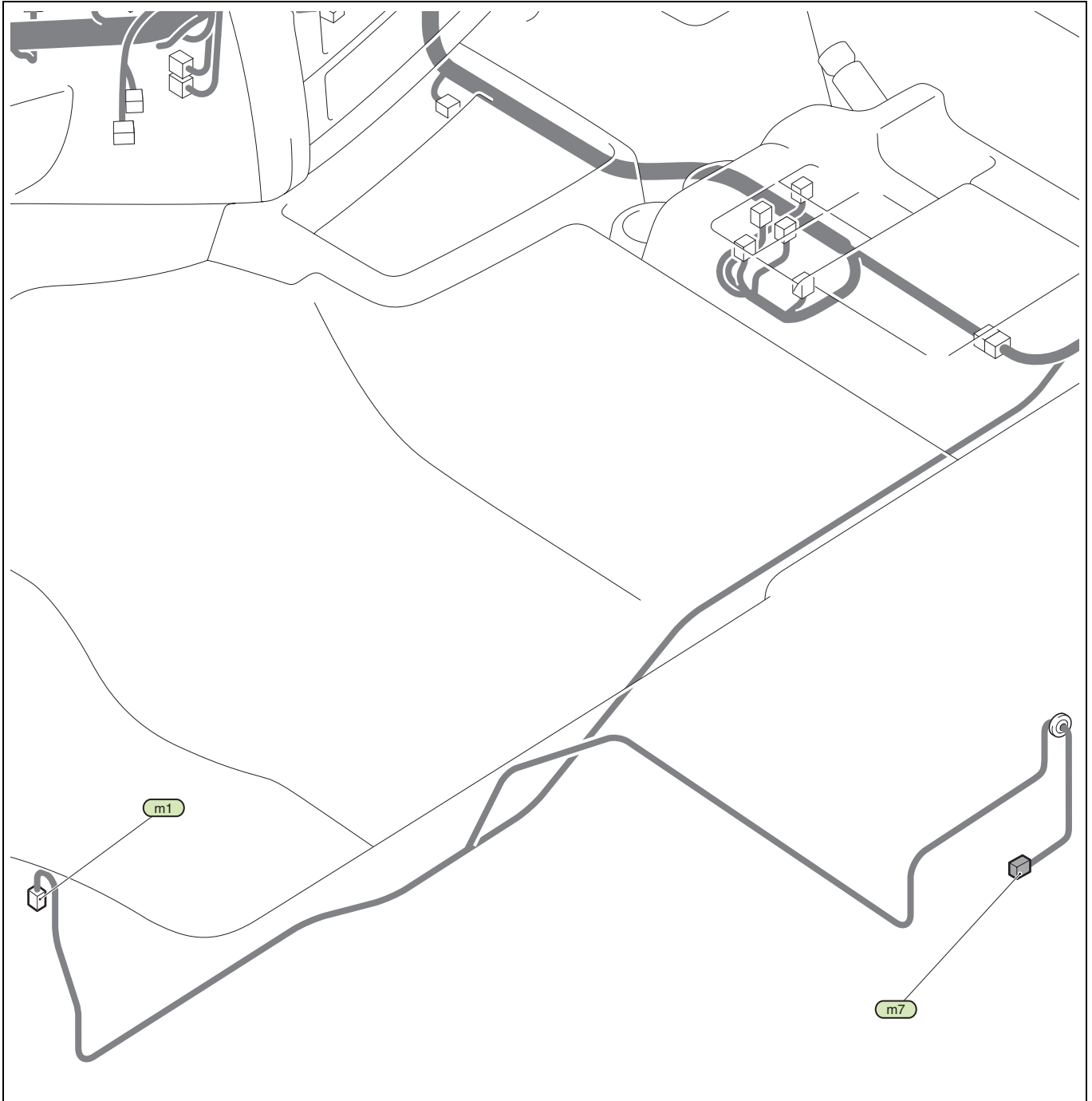
**ELECTRICAL EQUIPMENT CONNECTOR AND JUNCTION CONNECTOR**

No.	Name	Circuit	No.	Name	Circuit
a1	Front turn signal light RH	CC, CE	i7	Fluorescent light	CL
a2	Front side marker light RH	CG	i8	Roof marker light RH	CG
a3	Washer pump motor	DL	i10	Dome light RH	CL
a4	Air conditioner condenser	EA	k2	Front side turn signal light RH	CC, CE
a7	Mirror heater (Side under)	DA	k10	Power window motor (Assistant's side)	DH
i2	Roof marker light LH	CG	k11	Power window switch (Assistant's side)	DH
i5	Center speaker LH	DI	k12	Power door lock actuator (Assistant's side)	DM
i6	Center speaker RH	DI			

**WIRE TO WIRE CONNECTOR**

No.	Name	No.	Name
a-i 1	Cab main wiring harness to Roof wiring harness 1	a-k 1	Cab main wiring harness to Door RH wiring harness 1

## IP-4 [INSTRUMENT PANEL (4 of 4)] (Models: Right-hand drive)



SHTS12Z160200165

## ELECTRICAL EQUIPMENT CONNECTOR AND JUNCTION CONNECTOR

No.	Name	Circuit	No.	Name	Circuit
m1	Courtesy switch LH	CL	m7	Cab tilt lock switch	IA, IB, IC, ID