

# SYSTEM INDEX

## 00 GENERAL INFORMATION

<b>R READING WIRING DIAGRAMS</b>	
VEHICLE IDENTIFICATION NUMBER (VIN) CODE.....	2
VEHICLE IDENTIFICATION NUMBERS (VIN).....	3
CONTENTS OF WIRING DIAGRAMS .....	4
GROUND POINTS .....	5
SYSTEM CIRCUIT DIAGRAM/ CONNECTOR DIAGRAM.....	6
ROUTING DIAGRAM .....	8
HARNESS SYMBOLS.....	9
WIRING COLOR CODE .....	9
SYMBOLS .....	9
SERVICE WARNING AND CAUTION FOR VEHICLES WITH SRS AIR BAG SYSTEM.....	12
SERVICE WARNING FOR VEHICLES WITH DISCHARGE HEADLIGHT.....	12
ABBREVIATIONS USED IN THIS MANUAL .....	12
<b>P ELECTRICAL SYSTEM GENERAL PROCEDURES.....</b>	<b>14</b>

## POWER, GROUND & COMMON CONNECTOR

<b>E ELECTRICAL WIRING SCHEMATIC .....</b>	<b>18</b>
<b>F FUSE BOX .....</b>	<b>20</b>
<b>J CENTRAL JUNCTION BOX (CJB).....</b>	<b>22</b>
<b>C COMMON CONNECTOR LIST .....</b>	<b>24</b>
<b>G GROUND POINT.....</b>	<b>28</b>

## DATA LINK CONNECTOR

<b>D DATA LINK CONNECTOR</b>	
AJ (3.0L Duratec) .....	30
L3.....	32

## 01 ENGINE

<b>12 COOLING SYSTEM</b>	
AJ (3.0L Duratec) .....	34
L3.....	36
<b>14 FUEL SYSTEM .....</b>	<b>38</b>
<b>17 CHARGING SYSTEM</b>	
AJ (3.0L Duratec) .....	40
L3.....	42
<b>19 STARTING SYSTEM</b>	
AJ (3.0L Duratec) .....	44
L3.....	46
<b>20 CRUISE CONTROL SYSTEM</b>	
AJ (3.0L Duratec) .....	48
<b>40 CONTROL SYSTEM</b>	
AJ (3.0L Duratec):INCLUDES AUTOMATIC TRANSAXLE CONTROL INFORMATION.....	52
L3:INCLUDES AUTOMATIC TRANSAXLE CONTROL INFORMATION.....	70

## 03 DRIVELINE/AXLE

<b>18 4-WHEEL DRIVE</b>	
ELECTRONIC 4WD CONTROL SYSTEM (TRIBUTE) ...	86

## 04 BRAKES

<b>13 ANTILOCK BRAKE SYSTEM</b>	
AJ (3.0L Duratec) .....	88
L3.....	90

## 05 TRANSMISSION/TRANSAXLE

<b>18 AUTOMATIC TRANSAXLE SHIFT MECHANISM</b>	
KEY INTERLOCK SYSTEM.....	92
SHIFT-LOCK SYSTEM.....	92

## 07 HEATER, VENTILATION & IR CONDITIONING (HVAC)

<b>40 CONTROL SYSTEM</b>	
EATC SYSTEM.....	94
HEATER AND MANUAL AIR CONDITIONER SYSTEM....	98
A/C COMPRESSOR CONTROL .....	102

## 08 RESTRAINTS

<b>10 AIR BAG SYSTEM</b>	
AIR BAG SYSTEM (INCLUDES PRE-TENSIONER SEAT BELT INFORMATION) .....	104

## 09 BODY & ACCESSORIES

<b>12 GLASS/WINDOWS/MIRRORS</b>	
REAR WINDOW DEFROSTER .....	108
POWER WINDOW SYSTEM WITH AUTO SWITCH .....	110
WITHOUT AUTO SWITCH.....	114
POWER OUTER MIRROR .....	118
POWER SEAT.....	120
<b>14 SECURITY AND LOCKS</b>	
POWER DOOR LOCK SYSTEM WITHOUT DOUBLE LOCKING SYSTEM.....	122
IMMOBILIZER SYSTEM (PATS).....	126
KEYLESS ENTRY SYSTEM.....	128
<b>15 SUNROOF .....</b>	<b>130</b>
<b>18 LIGHTING SYSTEMS</b>	
HEADLIGHT .....	132
LICENSE PLATE LIGHT .....	136
PARKING LIGHT.....	136
TAILLIGHT .....	136
FRONT FOG LIGHT .....	138
READ FOG LAMPS J87S USE LHD .....	144
TURN AND HAZARD WARNING LIGHT.....	144
BACK-UP LIGHT .....	148
BRAKE LIGHT .....	150
HIGH-MOUNT BRAKE LIGHT.....	150
CARGO COMPARTMENT LIGHT.....	152
INTERIOR LIGHT .....	152
MAP LIGHT.....	152
COURTESY LIGHT .....	154
ILLUMINATION LIGHT.....	156
HEADLIGHT LEVELING SYSTEM .....	162
VANITY MIRROR ILLUMINATION .....	164
<b>19 WIPER/WASHER SYSTEM</b>	
WINDSHIELD WIPER AND WASHER .....	166
REAR WIPER AND WASHER TRIBUTE .....	168
ESCAPE.....	170
<b>20 ENTERTAINMENT</b>	
ACCESSORY SOCKET.....	172
CIGARETTE LIGHTER.....	172
AUDIO SYSTEM.....	174
USB&AUX-IN .....	178
CD CHANGER .....	180
AUDIO WOOFER SYSTEM AT-3 .....	182
<b>21 POWER SYSTEMS</b>	
IGNITION SWITCH.....	184
<b>22 INSTRUMENTATION/DRIVER INFO.</b>	
INSTRUMENT CLUSTER.....	188
HORN .....	198
<b>40 CONTROL SYSTEM</b>	
GEM (GENERIC ELECTRONIC MODULE) .....	200
<b>50 BACK SONAR SYSTEM</b>	
BACK SONAR SYSTEM (J87R) .....	206

Two digits (section ID) indicated in front of each title are commonly used with the Workshop Manual.

## **00 GENERAL INFORMATION**

### **R READING WIRING DIAGRAMS**

VEHICLE IDENTIFICATION NUMBER (VIN) CODE.....	2
VEHICLE IDENTIFICATION NUMBERS (VIN).....	3
CONTENTS OF WIRING DIAGRAMS .....	4
GROUND POINTS .....	5
SYSTEM CIRCUIT DIAGRAM/ CONNECTOR DIAGRAM .....	6
ROUTING DIAGRAM .....	8
HARNESS SYMBOLS.....	9
WIRING COLOR CODE .....	9
SYMBOLS .....	9
SERVICE WARNING AND CAUTION FOR VEHICLES WITH SRS AIR BAG SYSTEM.....	12
SERVICE WARNING FOR VEHICLES WITH DISCHARGE HEADLIGHT.....	12
ABBREVIATIONS USED IN THIS MANUAL .....	12

### **P ELECTRICAL SYSTEM GENERAL PROCEDURES..... 14**

#### **POWER, GROUND & COMMON CONNECTOR**

<b>E ELECTRICAL WIRING SCHEMATIC .....</b>	<b>18</b>
<b>F FUSE BOX .....</b>	<b>20</b>
<b>J CENTRAL JUNCTION BOX (CJB) .....</b>	<b>22</b>
<b>C COMMON CONNECTOR LIST .....</b>	<b>24</b>
<b>G GROUND POINT.....</b>	<b>28</b>

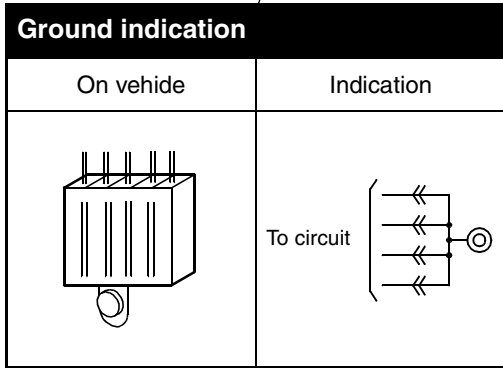
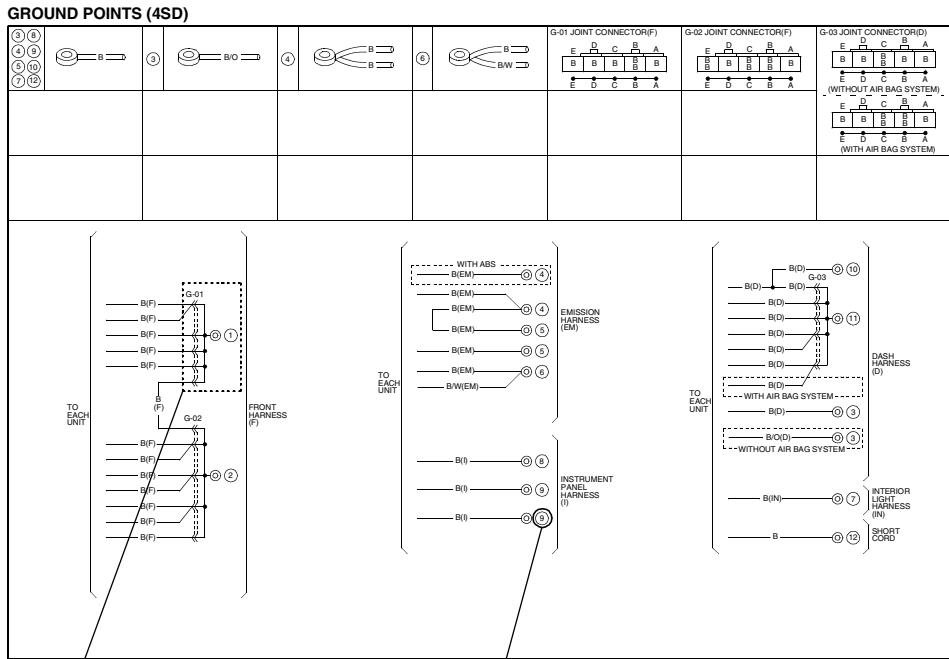
#### **DATA LINK CONNECTOR**

### **D DATA LINK CONNECTOR**

AJ (3.0L Duratec) .....	30
L3.....	32

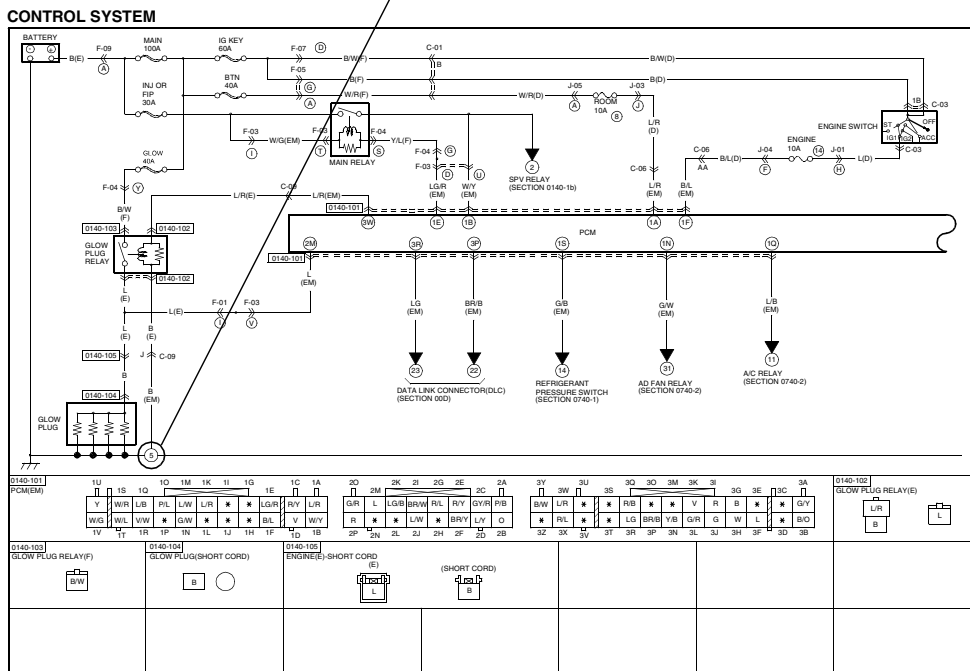
## GROUND POINTS

- This shows ground points of the harness.



**On circuit diagrams and ground points**

The ground connection numbers in system circuit diagrams correspond to those in the ground point diagram.



## HARNESS SYMBOLS

DESCRIPTION OF HARNESS	SYMBOL		DESCRIPTION OF HARNESS	SYMBOL	
FRONT HARNESS	(F)		DOOR No. 1 HARNESS	(DR1)	—
FRONT No. 2 HARNESS	(F2)		DOOR No. 2 HARNESS	(DR2)	
ENGINE HARNESS	(E)		DOOR No. 3 HARNESS	(DR3)	
DASH HARNESS	(D)		DOOR No. 4 HARNESS	(DR4)	
REAR HARNESS	(R)		FLOOR HARNESS	(FR)	—
REAR No. 2 HARNESS	(R2)		INTERIOR LIGHT HARNESS	(IN)	—
REAR No. 3 HARNESS	(R3)		A/C HARNESS	(AC)	—
INSTRUMENT PANEL HARNESS	(I)	—	INJECTION HARNESS	(INJ)	—
EMISSION HARNESS	(EM)	—	HAND BRAKE HARNESS	(HB)	—
EMISSION No. 2 HARNESS	(EM2)				
EMISSION No. 3 HARNESS	(EM3)				

## WIRING COLOR CODE

COLOR	CODE	COLOR	CODE
BLACK	B	ORANGE	O
BLUE	L	PINK	P
BROWN	BR	RED	R
DARK BLUE	DL	SKY BLUE	SB
DARK GREEN	DG	TAN	T
GRAY	GY	VIOLET	V
GREEN	G	WHITE	W
LIGHT BLUE	LB	YELLOW	Y
LIGHT GREEN	LG		

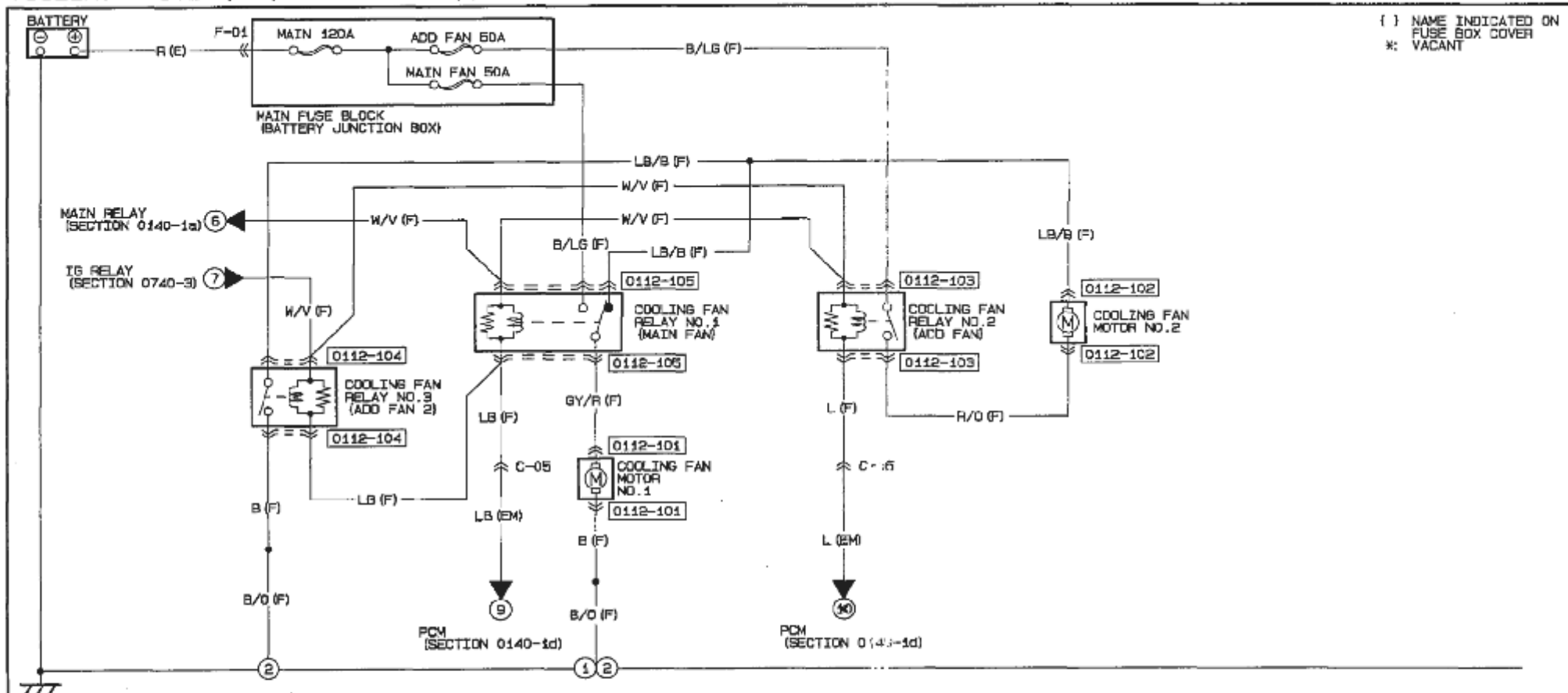
## SYMBOLS

Symbol	Meaning	Symbol	Meaning
Battery 	<ul style="list-style-type: none"> <li>Generates electricity through chemical reaction.</li> <li>Supplies direct current to circuits.</li> </ul>	Light 	<ul style="list-style-type: none"> <li>Emits light and generates heat when current flows through filament.</li> </ul>
Ground (1) 	<ul style="list-style-type: none"> <li>Connecting point to vehicle body or other ground wire where current flows from positive to negative terminal of battery.</li> <li>Ground (1) indicates a ground point to body through wire harness.</li> <li>Ground (2) indicates point where component is grounded directly to body.</li> </ul> Remarks <ul style="list-style-type: none"> <li>Current will not flow through a circuit if ground is faulty.</li> </ul>		Resistance 
Ground (2) 		Motor 	<ul style="list-style-type: none"> <li>A resistor with a constant value.</li> <li>Mainly used to protect electrical components in circuits by maintaining rated voltage.</li> </ul>
Ground (3) 		<ul style="list-style-type: none"> <li>Converts electrical energy into mechanical energy.</li> </ul>	

COOLING SYSTEM (AJ (3.0L Duratec))

0112-1

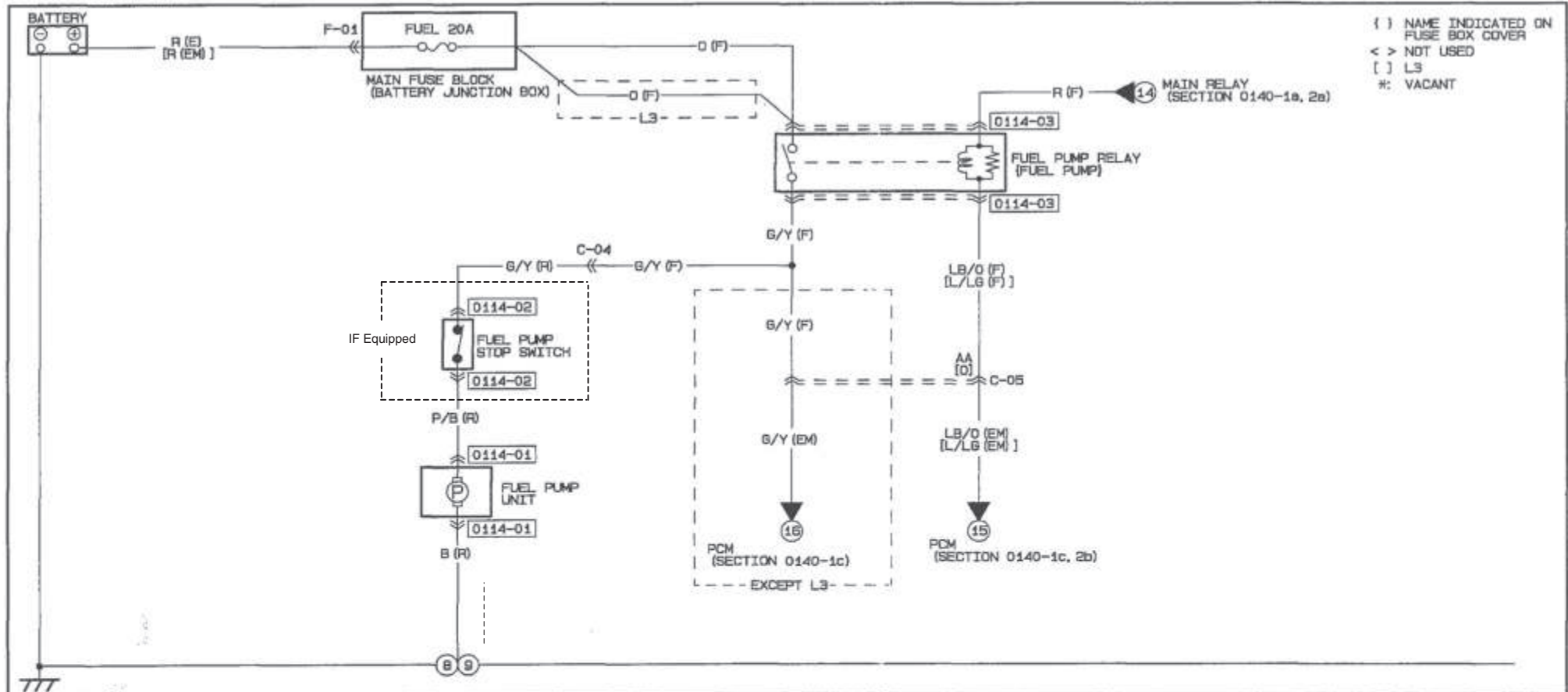
( ) NAME INDICATED ON FUSE BOX COVER  
\* : VACANT



<p>0112-101 COOLING FAN MOTOR NO.1 (F)</p>	<p>0112-102 COOLING FAN MOTOR NO.2 (F)</p>	<p>0112-103 COOLING FAN RELAY NO.2 (F)</p> <p>NOTE: SEEN FROM TERMINAL SIDE</p>	<p>0112-104 COOLING FAN RELAY NO.3 (F)</p> <p>NOTE: SEEN FROM TERMINAL SIDE</p>
<p>0112-105 COOLING FAN RELAY NO.1 (F)</p> <p>NOTE: SEEN FROM TERMINAL SIDE</p>			


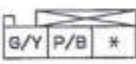

FUEL SYSTEM

0114-1

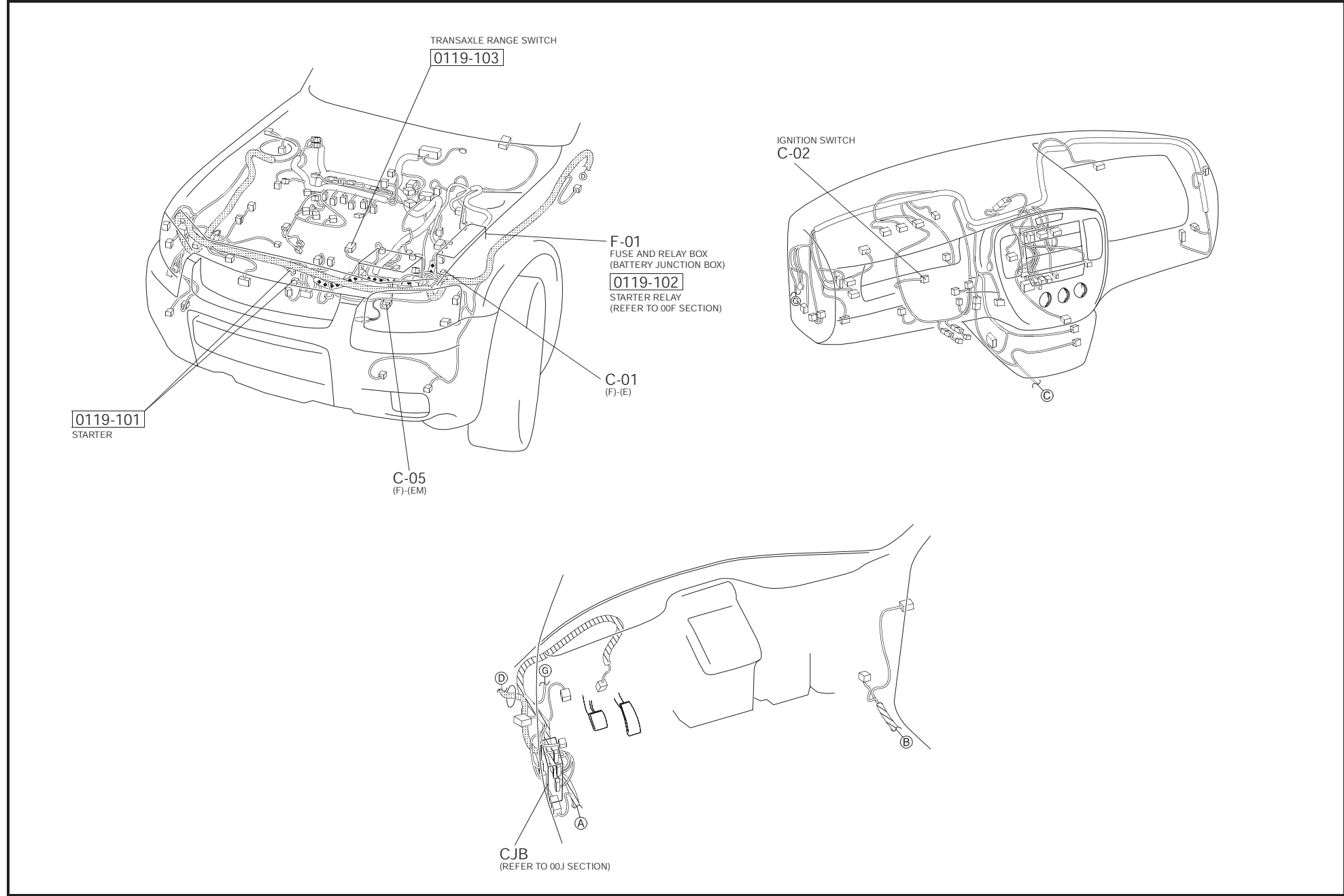


{ } NAME INDICATED ON FUSE BOX COVER  
 < > NOT USED  
 [ ] L3  
 \*: VACANT


38

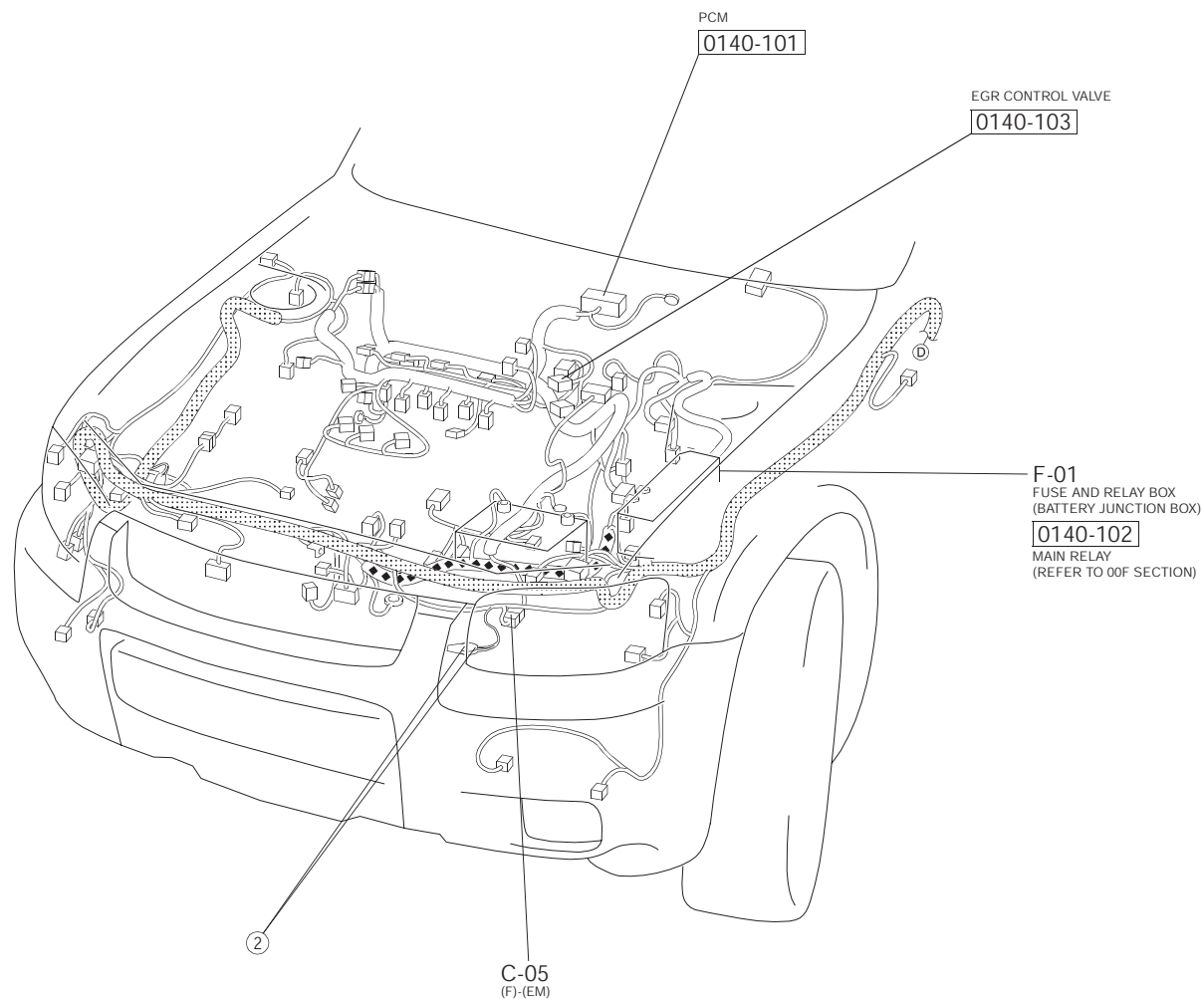
<p>0114-01 FUEL PUMP UNIT (R)</p> 	<p>0114-02 FUEL PUMP STOP SWITCH (R)</p> 	<p>0114-03 FUEL PUMP RELAY (F)</p>  <p>(EXCEPT L3) (L3)          NOTE: SEEN FROM TERMINAL SIDE</p>

HARNESS SYMBOL :  (F)  (E)  (R)



45

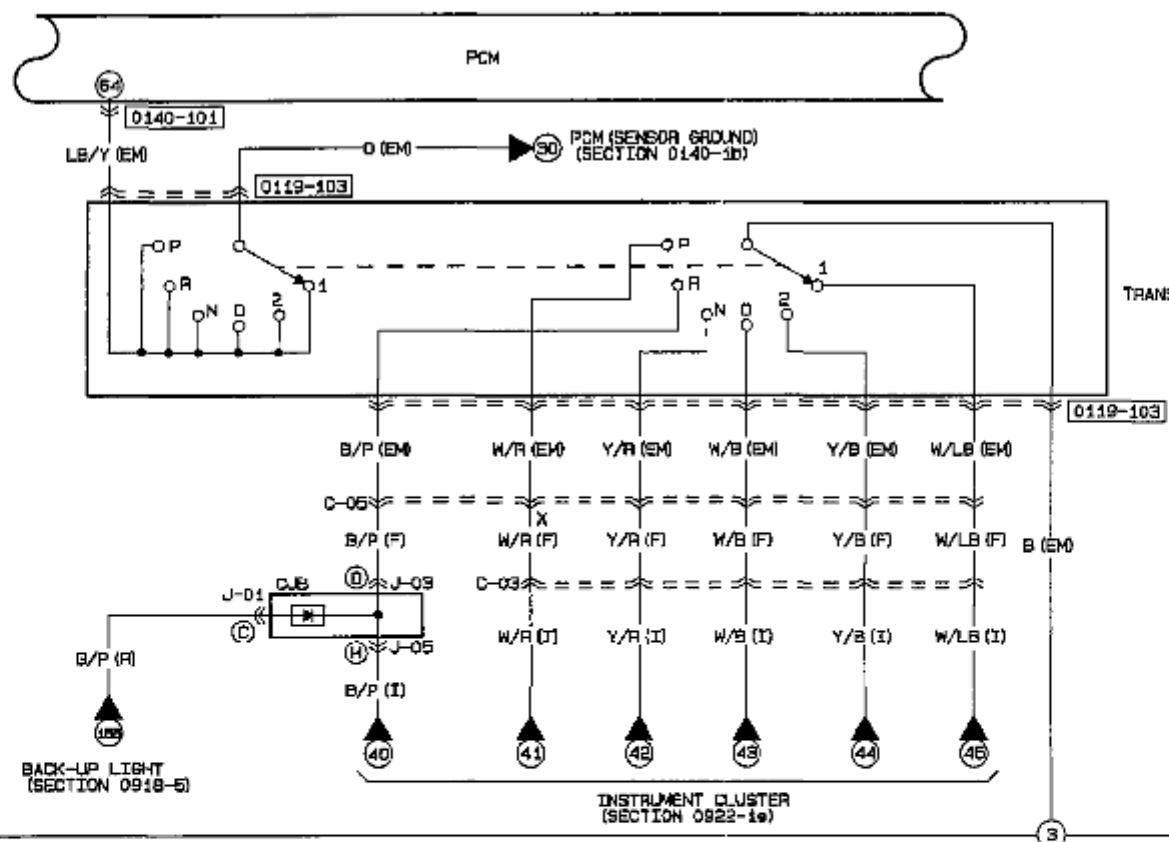
HARNESS SYMBOL :  (F)  (E)  (R)



53







- [ ] WITH EGR CONTROL VALVE
- < > WITH HEATED OXYGEN SENSOR
- \* WITH REAR HEATED OXYGEN SENSOR
- B WITH DIFFERENTIAL PRESSURE FEEDBACK EGR SENSOR
- 6: NOT USED
- #: VACANT

64

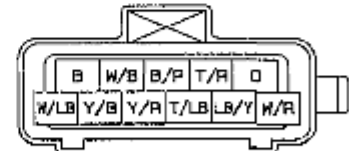
777

0140-101  
PCM (EM)

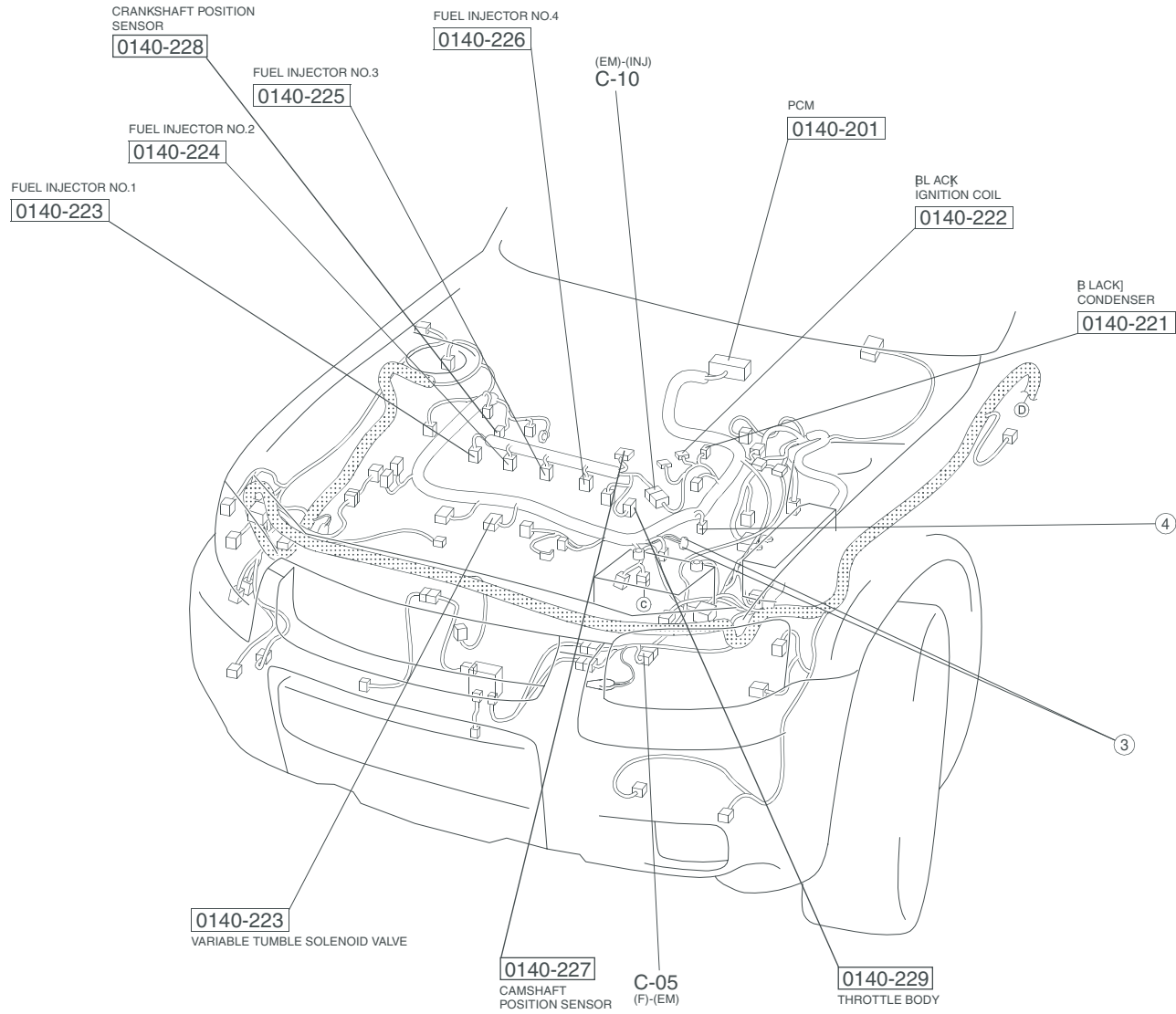
26	25	34	29	23	21	20	19	18	17	16	15	14	13	12	11	10	9	8	7	6	5	4	3	2	1
LG/W	*	B	*	GY/Y	B/P	P/B	*	BR/D	R/B	T/D	P/LB	*	V	*	V/D	*	*	*	*	O/Y	*	*	BR/L	*	W/P
62	61	50	43	49	47	46	45	44	43	42	41	40	39	38	37	36	35	34	33	32	31	30	29	28	27
G/Y	B	*	*	*	I/V	LB	*	L/D	*	6B	3/O	G/Y	P/B	LG/R	G/B	L/B	W/LB	*	*	G/V	V/LB	*	O/Y	L	F/W
78	77	76	75	74	73	72	71	70	69	68	67	66	65	64	63	62	61	60	59	58	57	56	55	54	53
D/Y	*	B	T	BR/Y	T/B	*	W/R	*	P/Y	GY/B	*	*	BR/L	LE/Y	*	*	W/LB	W/LB	*	Y/R	LG/B	R/LG	V/Y	LG/Y	
104	103	102	101	100	99	98	97	96	95	94	93	92	91	90	89	88	87	86	85	84	83	82	81	80	79
*	B	*	W	BR/L	LG/D	*	W/R	W/Y	W/B	W/B	W/B	W/B	B/Y	L/O	L/V	W/LB	*	W/Y	LE/D	*					

0119-103

TRANSAXLE RANGE SWITCH (EM)



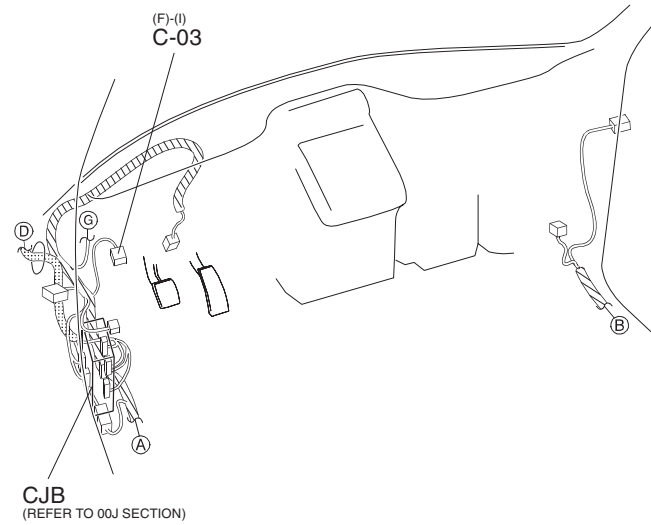
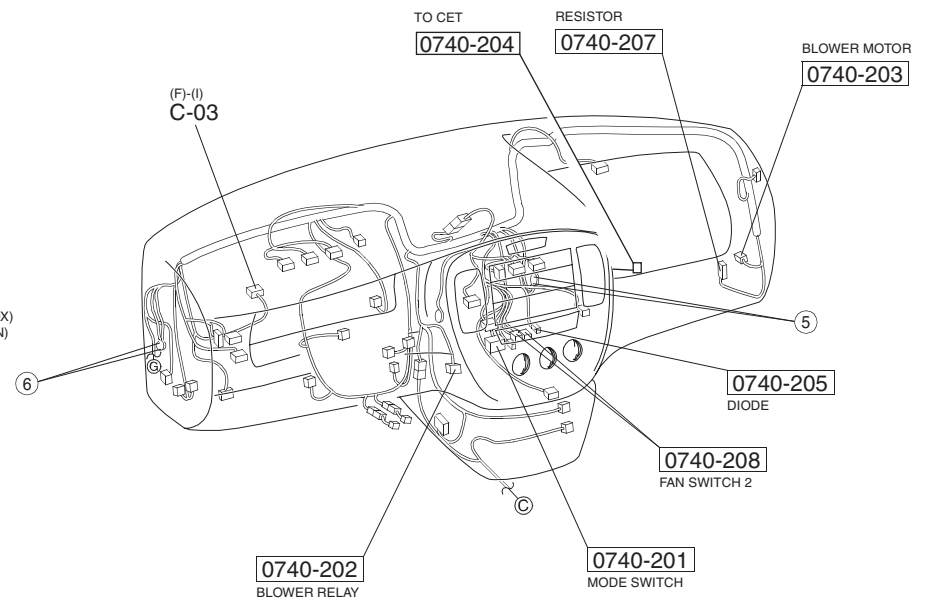
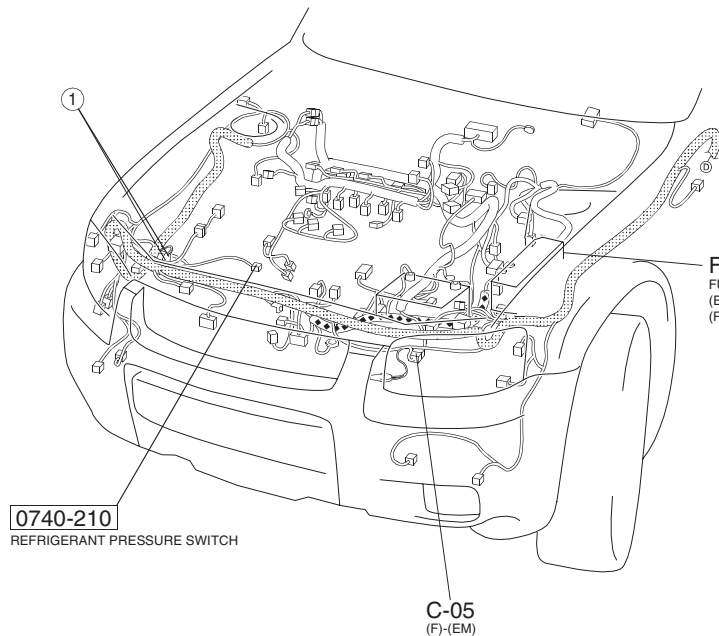
HARNES SYMBOL :  (F)  (E)  (R)



81



HARNESS SYMBOL :  (F)  (E)  (R)

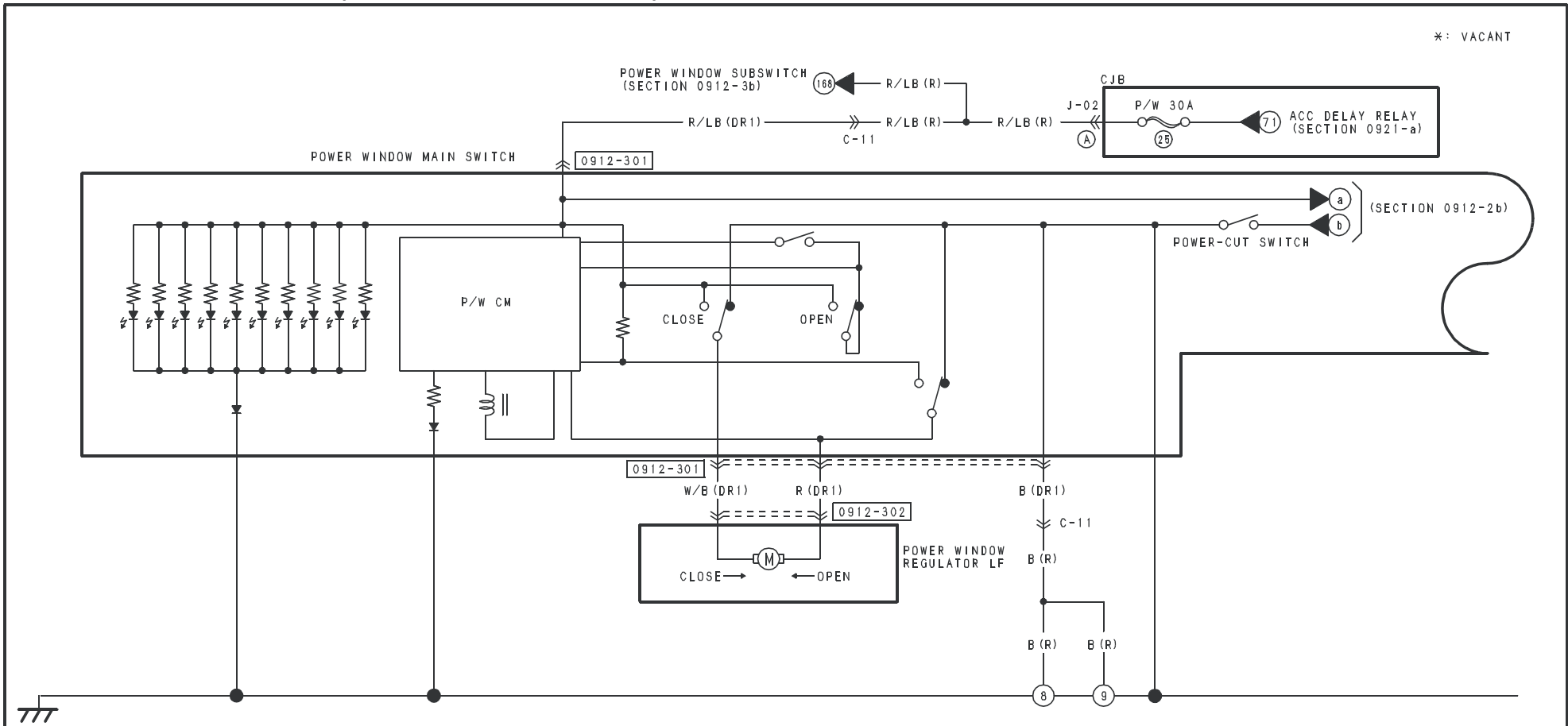


101

POWER WINDOW SYSTEM (WITHOUT AUTO SWITCH)

0912-3a

\*: VACANT



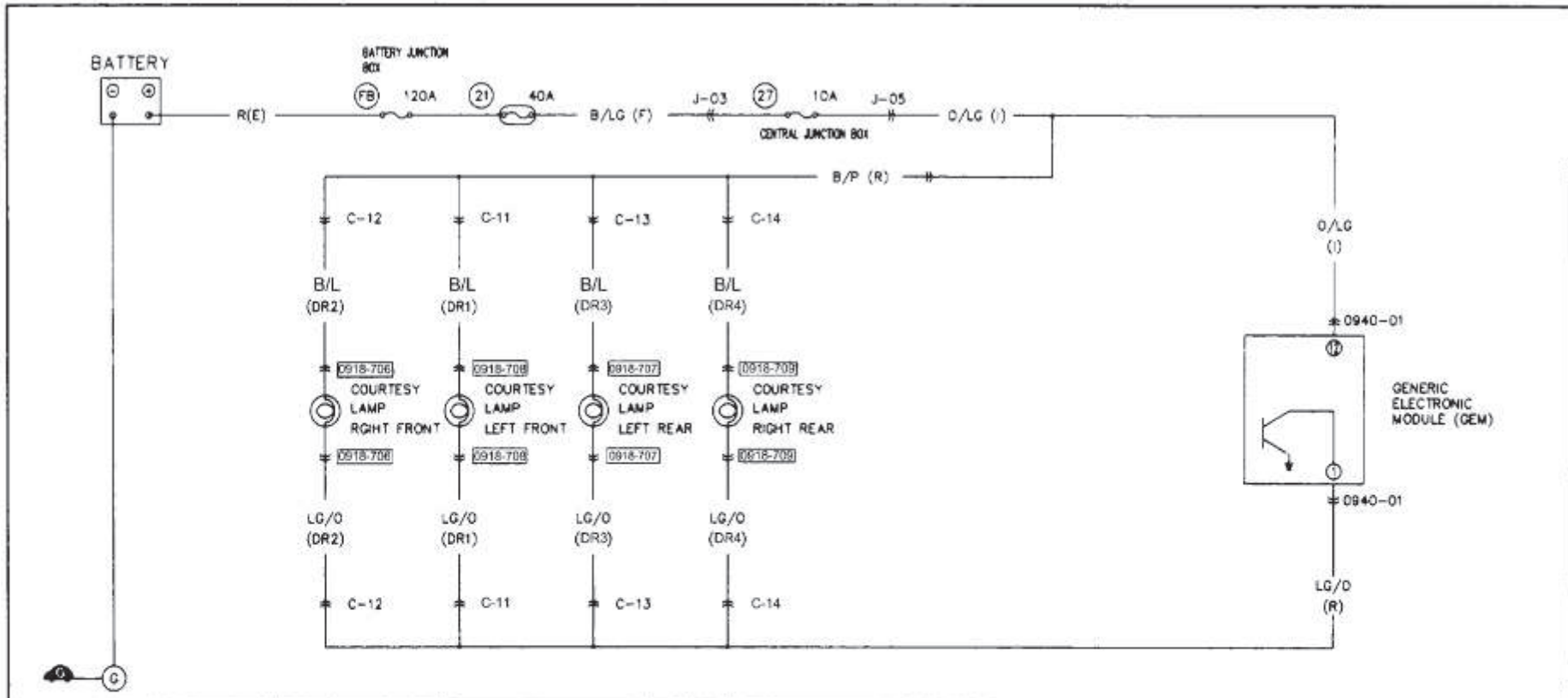
114

<p>0912-301 POWER WINDOW MAIN SWITCH (DR1)</p> <table border="1" data-bbox="268 1101 582 1181"> <tr> <td>W/Y</td> <td>T/LB</td> <td>P/W</td> <td>W/B</td> <td>*</td> </tr> <tr> <td>Y/LB</td> <td>GY/O</td> <td>R/LB</td> <td>R</td> <td>R/B</td> </tr> <tr> <td></td> <td></td> <td></td> <td>Y/B</td> <td>B</td> </tr> </table>	W/Y	T/LB	P/W	W/B	*	Y/LB	GY/O	R/LB	R	R/B				Y/B	B	<p>0912-302 POWER WINDOW REGULATOR LF (DR1)</p> <table border="1" data-bbox="918 1101 1030 1165"> <tr> <td>R</td> <td>W/B</td> </tr> </table>	R	W/B			
W/Y	T/LB	P/W	W/B	*																	
Y/LB	GY/O	R/LB	R	R/B																	
			Y/B	B																	
R	W/B																				

--	--	--	--	--	--	--

COURTESY LAMP(LHD)

0918-7b



<p>0918-706 COURTESY LAMP-RF</p>	<p>0918-707 COURTESY LAMP-LR</p>	<p>0940-01 GENERIC ELECTRONIC MODULE (GEM)</p>		
<p>0918-708 COURTESY LAMP-LF</p>	<p>0918-709 COURTESY LAMP-RR</p>			